

Build a process control room - JST Jungmann offers you the perfect solution. Can we inspire you?

Are you looking for a professional partner for the construction of your process control room? Then JST is perfect for you. Since 2001 we have been implementing well thought-out and technically innovative process control rooms for a wide range of industries right down to the last detail. Our solutions are developed individually to meet **specific needs** and **architectural constraints**. We are always on the cutting edge of technology and are passionate about developing our own **outstanding professional tools**, which are only available at JST. Such as our PixelDetection®. It works away reliably in the background acting as a watchful eye of the operator and emits an **alarm at the right moment**. We would like to invite you to personally experience the full range of our services in our control room simulator. You will be thrilled!

OFFER BUILD PROCESS CONTROL ROOM



- Analysis and planning of your process control room.
- Everything from a single source: architecture, technology, light, acoustics, climate.
- Modern monitor walls for 24/7 operation

- Ergonomic process control room furniture from Germany.
- Stress-free and efficient operation.
- Pleasant working atmosphere for optimum performance.



Practical examples: Building process control rooms

Industry and public utilities rely on JST technology for their process control rooms in 24/7 continuous operation. The **highest safety regulations apply here**. High demands are also placed on the employees. Because no alarm can be allowed to escape their watchful eyes, considerable harm can quickly be done in an emergency. **JST knows the requirements** and knows which hardware and software solutions you need to have **everything perfectly under control**. Our enthusiastic customers will give you an insight into our joint projects here. Browse through our [references](#). We are confident that there is a completed project that fits your requirements.

We will be happy to put you in touch with the appropriate contact person.

Process control room built for PCK refinery

PCK Raffinerie GmbH in Schwedt/Oder is one of the top companies in Brandenburg and the most important company in the Uckermark. Around 12 million tonnes of crude oil are processed into petroleum and petrochemical products in Schwedt every year. The main products are diesel, petrol, kerosene, liquefied petroleum gas, heating oils and bitumen. PCK was one of the first refineries in Germany to use biofuels and is itself a major producer of high-quality biofuel components.

GO TO PROJECT



"Compared to the satellite measuring stations and also to the old central measuring station, we have been able to improve in every aspect, be it acoustics, lighting, air conditioning, ergonomics or user-friendliness".

Eric Sieger, Thomas Taube, Carsten Jungmann (from left to right)

Chief Divisional Engineer for Processing (PCK) / Divisional Engineer for Maintenance Service

<https://www.jungmann.de/>

and Project Coordinator (PCK) / Managing Director (JST)



Process control room constructed as the heart of the MVA - waste recovery plant

All operating and emissions data are collected by them, they check that the limit values are never exceeded, thus guaranteeing the highest safety standards: The operators in the new control room of Müllverwertungsanlage Bonn GmbH (MVA), a subsidiary of Stadtwerke Bonn, are responsible for monitoring all data and functions at the core of the plant. This important task is supported by

products from Jungmann Systemtechnik – JST.

GO TO PROJECT



"Things are going great. The system has been very well received by colleagues."

Frank Nachtsheim

Plant Manager of MVA Bonn



Process control room completely constructed

The monitoring of around 2,000 computer systems is the focus of the employees at Audi's so-called "MMS" control room in Ingolstadt. MMS – that stands for Manufacturing Management System. This involves continuous testing of all the steps required to produce the various models. The new control room was equipped by the control room specialists from Jungmann Systemtechnik.

GO TO PROJECT



Audi

Positive feedback for JST's services in the Audi control room - from left:

Alan Haydt, Gerhard Sporer, Jürgen Schneider (from left to right)

Head of Maintenance Processes and Systems Engineering / Control Center Coordination /
Project Manager



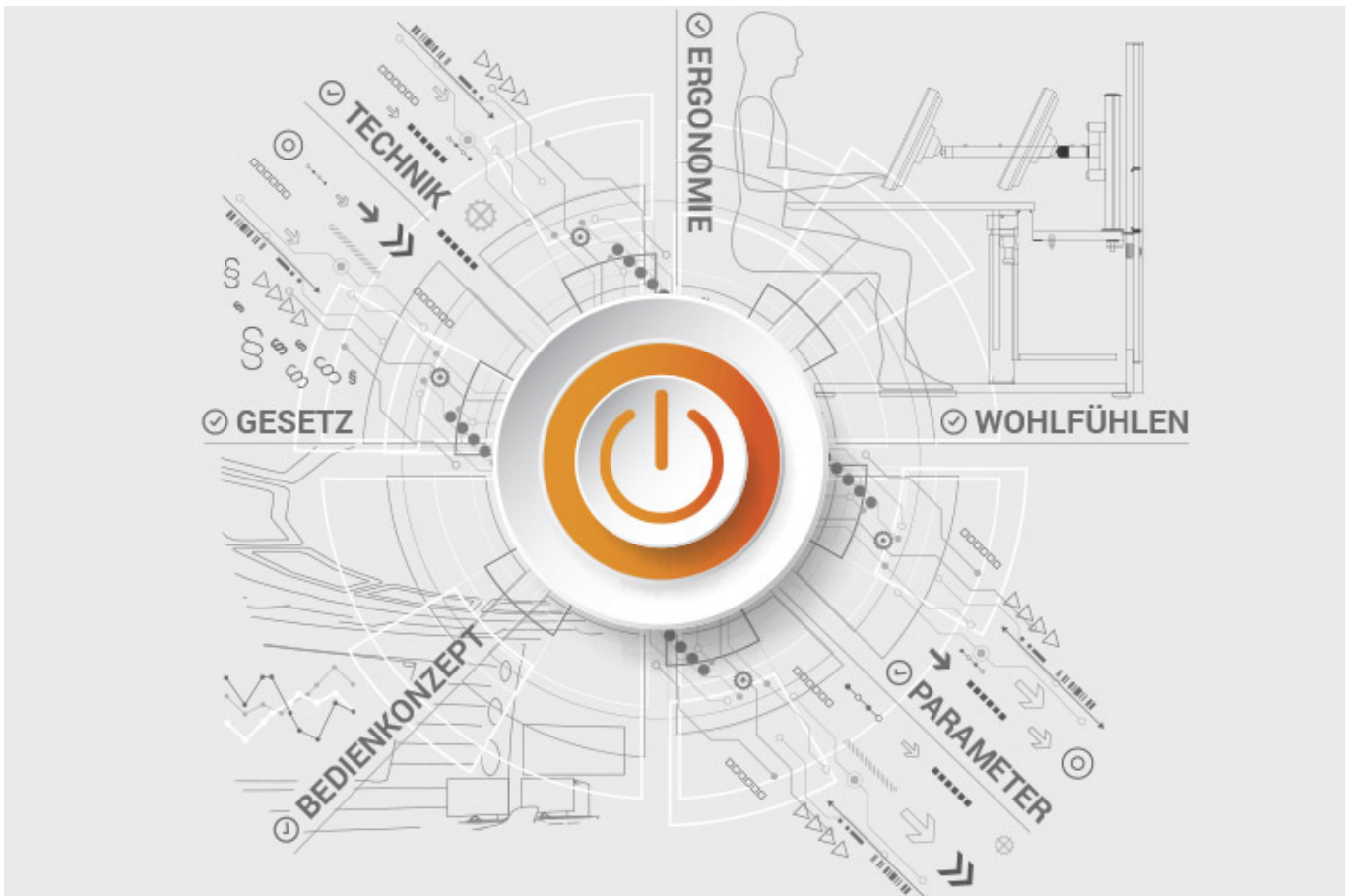
ALL PROJECTS

Documents for download

- [Project report on the new central control room of Infraleuna \(PDF\)](#)

JST product overview: Think of everything!

Build process control rooms with suitable components



Analysis and planning of your control room

Are you planning changes in your control room? Or would you like to breathe some fresh air into your control room? Then make use of the proven planning packages or the free online analysis from JST. Our experts will support you in accordance with BAUA: Study and all important standards and guidelines.

[More about the free analysis](#)



Large-display technology – react faster!

Proactively present important information to the right people – before an incident can have a major impact. With scalable large display walls based on LCD displays and Cube technology, we are sure to find the right large-format system for your 24/7 operation!

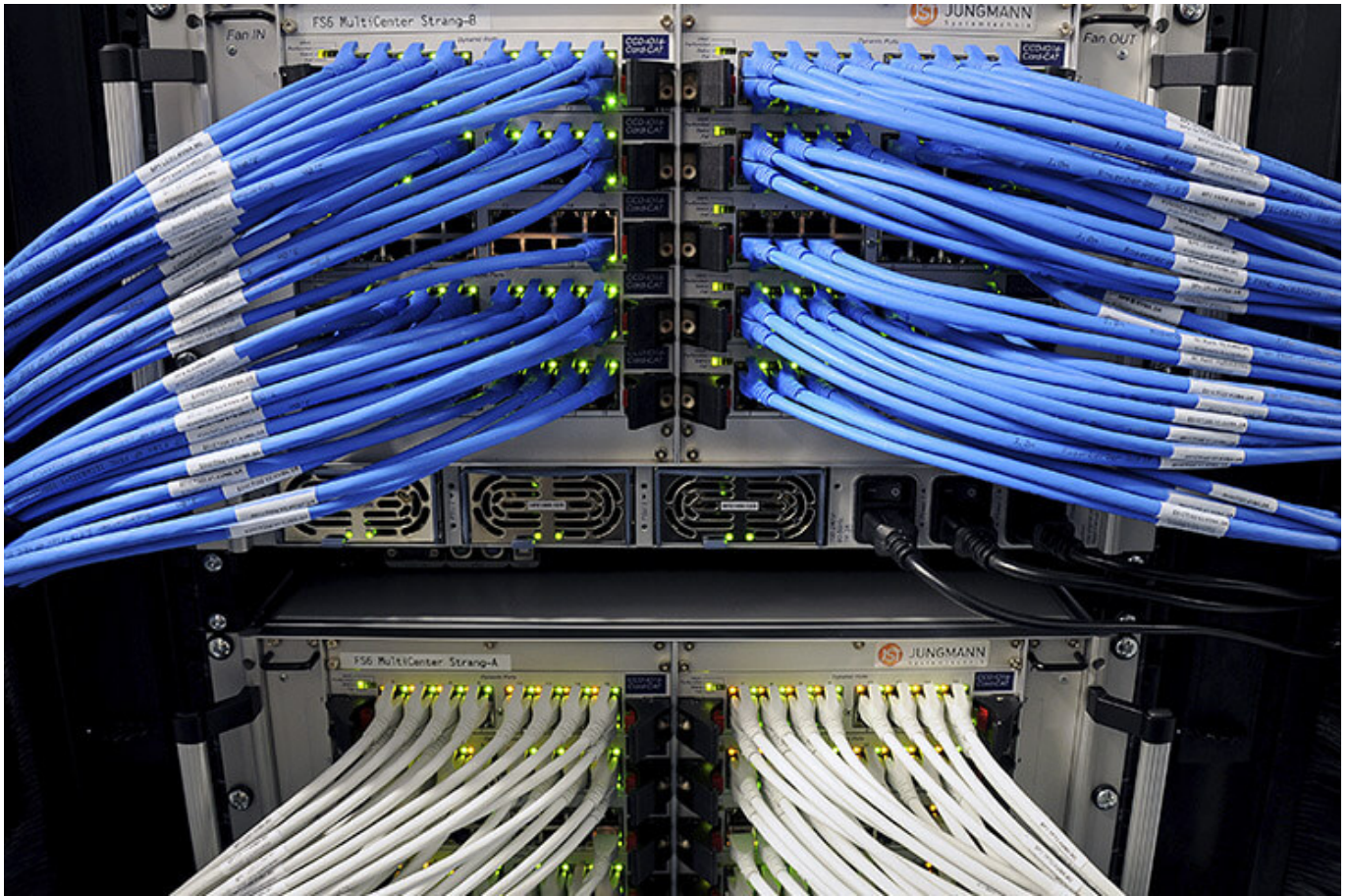
More about JST large-display technology



myGUI® – User interface for large-format system, workplace & infrastructure

The intuitive myGUI® user interface in the 3D layout of your control room offers maximum operating convenience for your MultiConsoling® system. With just one click you can operate workstations, monitor walls and infrastructure – always absolutely safe and excellent in stressful situations.

[More about myGUI®](#)



MultiConsoling[®] – The Control center control room

MultiConsoling[®] is the high-availability control center for connecting all of the signals from your systems to the monitors at the operator's workstation and on the monitor walls. Transmission takes place in real time and does not require any software on your computers.

[More about MultiConsoling[®]](#)



Control room furniture: ergonomic operator consoles, Recaro operator's chair, AllMedia Conference System

You can get furniture and technology from a single source at JST. The highly stable Stratos operator consoles, with height adjustment and suitable surrounding furniture, form an ergonomic base for your control room.

[More about control room furniture](#)



Large-screen control system with graphic controller

With the IP-based graphic controller you can get your monitor wall going. The graphic controller records all video signals over the IP network simultaneously and spreads them out at any position and in any scale on the large display wall.

[More about graphic controllers](#)



PixelDetection® – the operator's eye

Shorten your reaction times! With PixelDetection®, you will receive the right alarm at exactly the right moment and always be able to see an overview. Proven for many years and repeatedly awarded, PixelDetection® is also known as the “artificial eye of the operator”.

[More about PixelDetection®](#)



JST myLogin[®] – the operator's login

JST myLogin[®] is a revolutionary solution for logging on and off centrally and quickly from all operator workstations with your company ID. The login/logout process only takes a few moments. If you want, you can also save your personal layout of the screen contents.

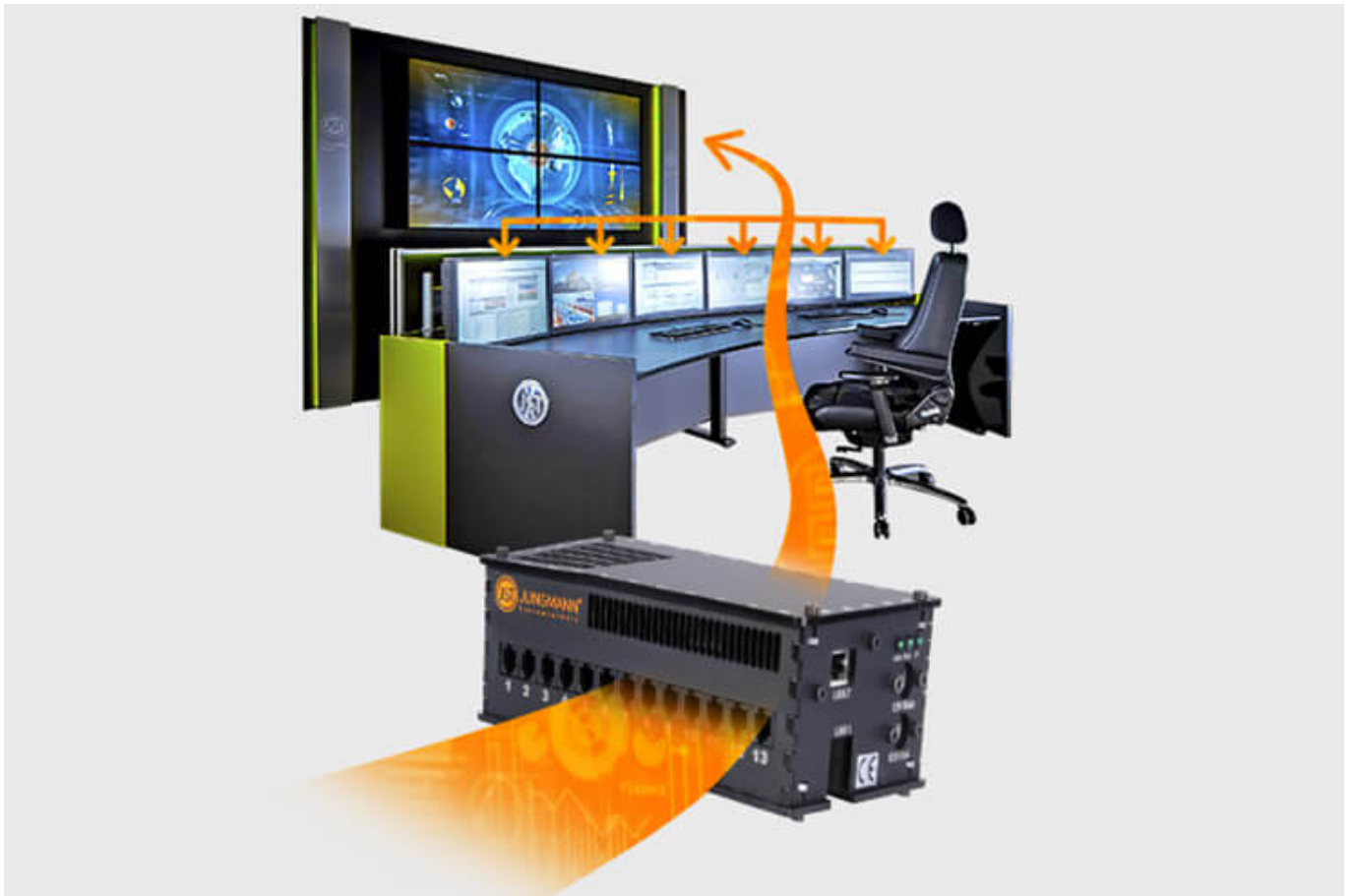
[More about myLogin[®]](#)



CockpitView – the operator’s dashboard

Create dashboards with content from different computers on different networks! CockpitView offers you the perfect overview of your most important applications at a glance. With CockpitView you can stay in control and reduce monitors at the workplace or even the large-format system.

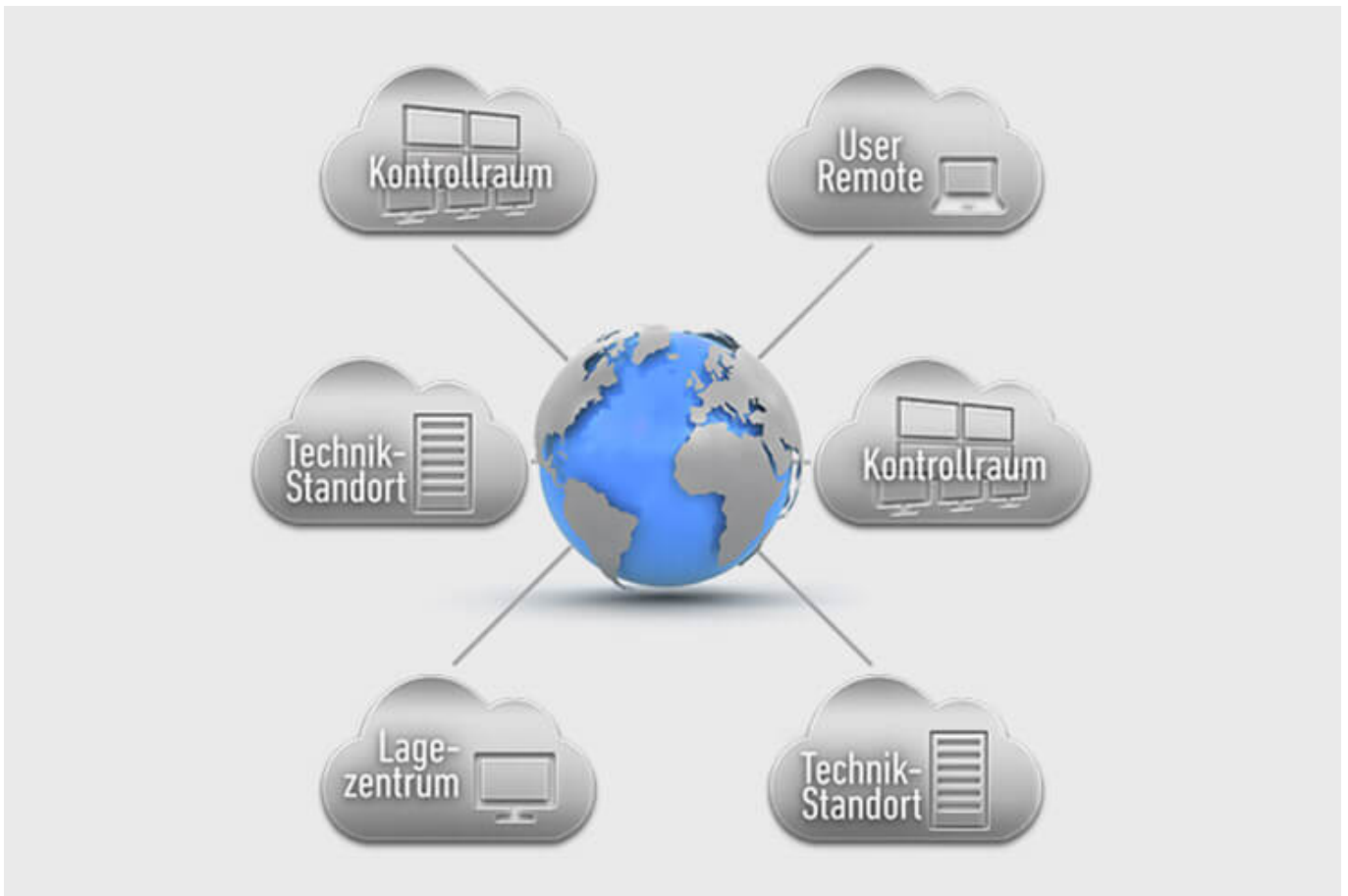
[More about CockpitView](#)



Automation for Videowalls and operator workstations

With the JST CommandBox, you can monitor circuits, relays, audio signals, and much more, and have them automatically switched on at defined workstations or on the monitor wall when critical values are detected. The range of applications is almost unlimited!

[More about ControlRoom Automation](#)



ControlRoom Remote: Connection of distributed systems and locations

The optional remote interface of JST Systems allows you to visualise and operate remote computers and entire control rooms. Even complex emergency scenarios for backup control rooms are feasible!

[More about ControlRoom Remote](#)



Computer relocation and PC remote control

By relocating computers from the control room to the technical room, you can reduce the thermal load and create more legroom for your employees. Additional advantages are the central administration of the computers as well as the physical access protection in the secured technical room.

[More about computer relocation](#)



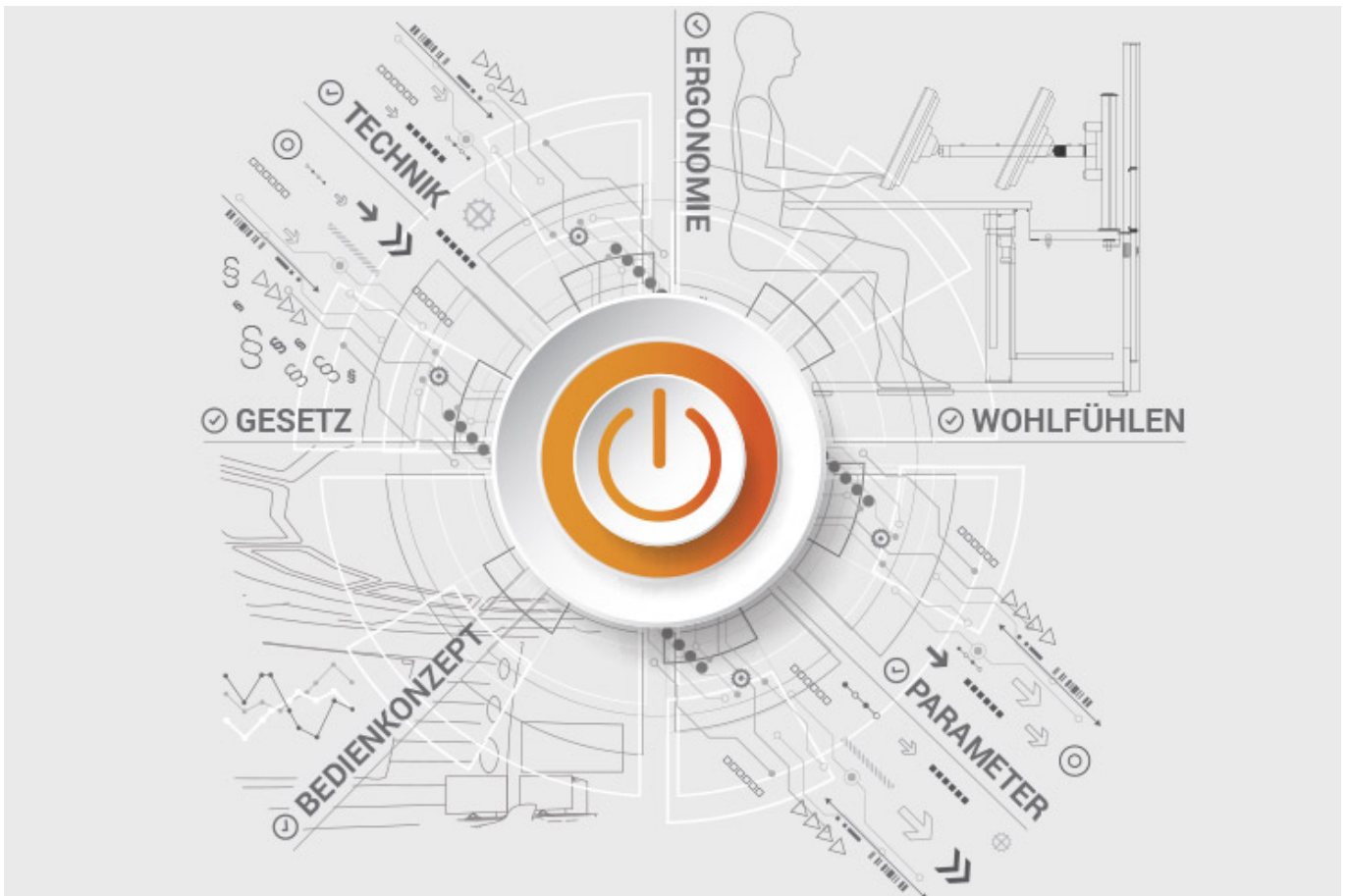
Optional service and maintenance packages

To ensure that your control room stays as available as you need it to be, we offer preventative maintenance packages in various scopes and forms. You will receive customised solutions that will support your market and competitive success.

[More about service from JST](#)

JST product overview: Think of everything!

Build process control rooms with suitable components



Analysis and planning of your control room

Are you planning changes in your control room? Or would you like to breathe some fresh air into your control room? Then make use of the proven planning packages or the free online analysis from JST. Our experts will support you in accordance with BAUA: Study and all important standards and guidelines.

More about the free analysis



Large-display technology – react faster!

Proactively present important information to the right people – before an incident can have a major impact. With scalable large display walls based on LCD displays and Cube technology, we are sure to find the right large-format system for your 24/7 operation!

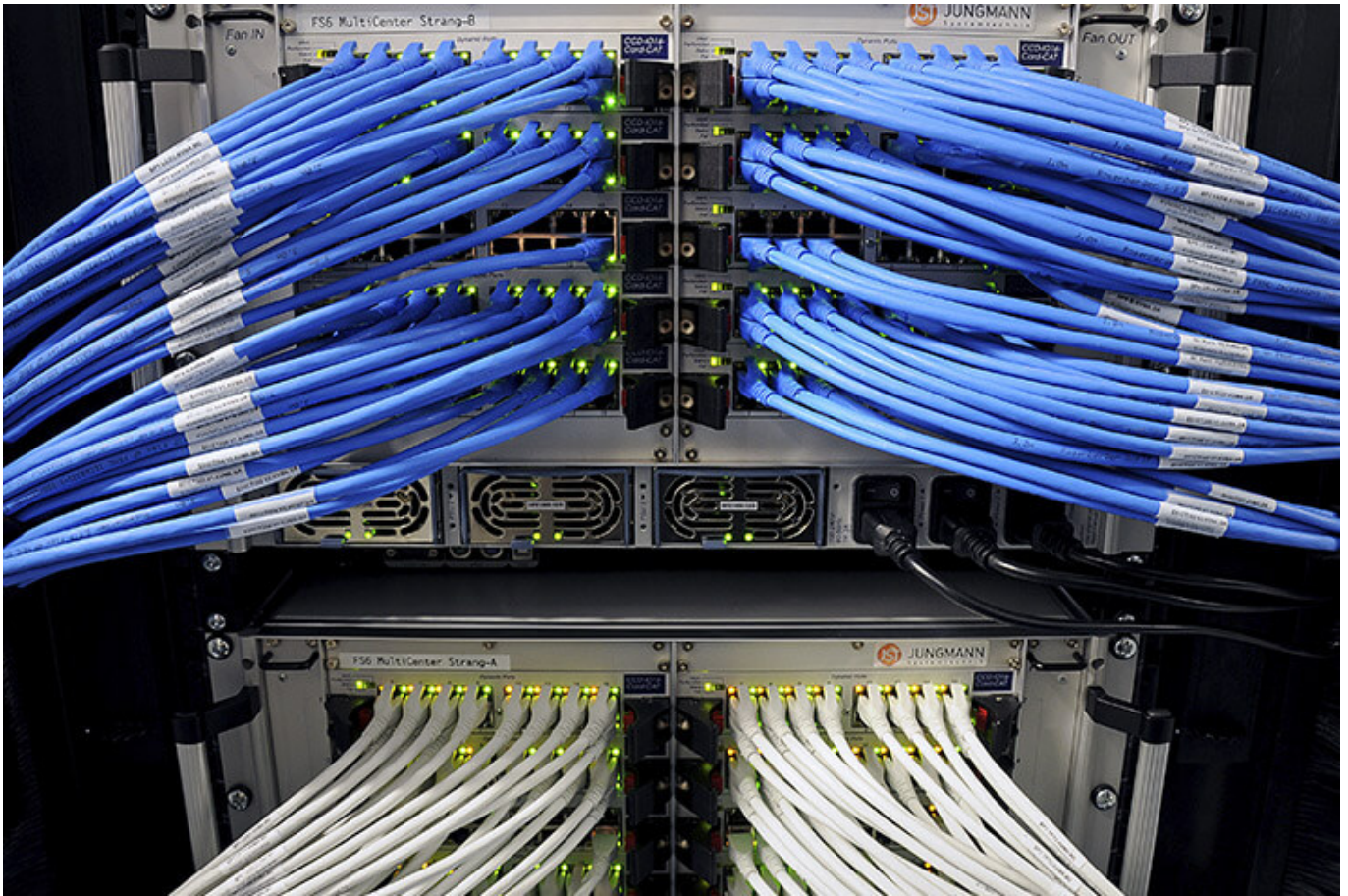
More about JST large-display technology



myGUI® – User interface for large-format system, workplace & infrastructure

The intuitive myGUI® user interface in the 3D layout of your control room offers maximum operating convenience for your MultiConsoling® system. With just one click you can operate workstations, monitor walls and infrastructure – always absolutely safe and excellent in stressful situations.

[More about myGUI®](#)



MultiConsoling® – The Control center control room

MultiConsoling® is the high-availability control center for connecting all of the signals from your systems to the monitors at the operator's workstation and on the monitor walls. Transmission takes place in real time and does not require any software on your computers.

[More about MultiConsoling®](#)



Control room furniture: ergonomic operator consoles, Recaro operator's chair, AllMedia Conference System

You can get furniture and technology from a single source at JST. The highly stable Stratos operator consoles, with height adjustment and suitable surrounding furniture, form an ergonomic base for your control room.

[More about control room furniture](#)



Large-screen control system with graphic controller

With the IP-based graphic controller you can get your monitor wall going. The graphic controller records all video signals over the IP network simultaneously and spreads them out at any position and in any scale on the large display wall.

[More about graphic controllers](#)



PixelDetection® – the operator's eye

Shorten your reaction times! With PixelDetection®, you will receive the right alarm at exactly the right moment and always be able to see an overview. Proven for many years and repeatedly awarded, PixelDetection® is also known as the “artificial eye of the operator”.

[More about PixelDetection®](#)



JST myLogin[®] – the operator's login

JST myLogin[®] is a revolutionary solution for logging on and off centrally and quickly from all operator workstations with your company ID. The login/logout process only takes a few moments. If you want, you can also save your personal layout of the screen contents.

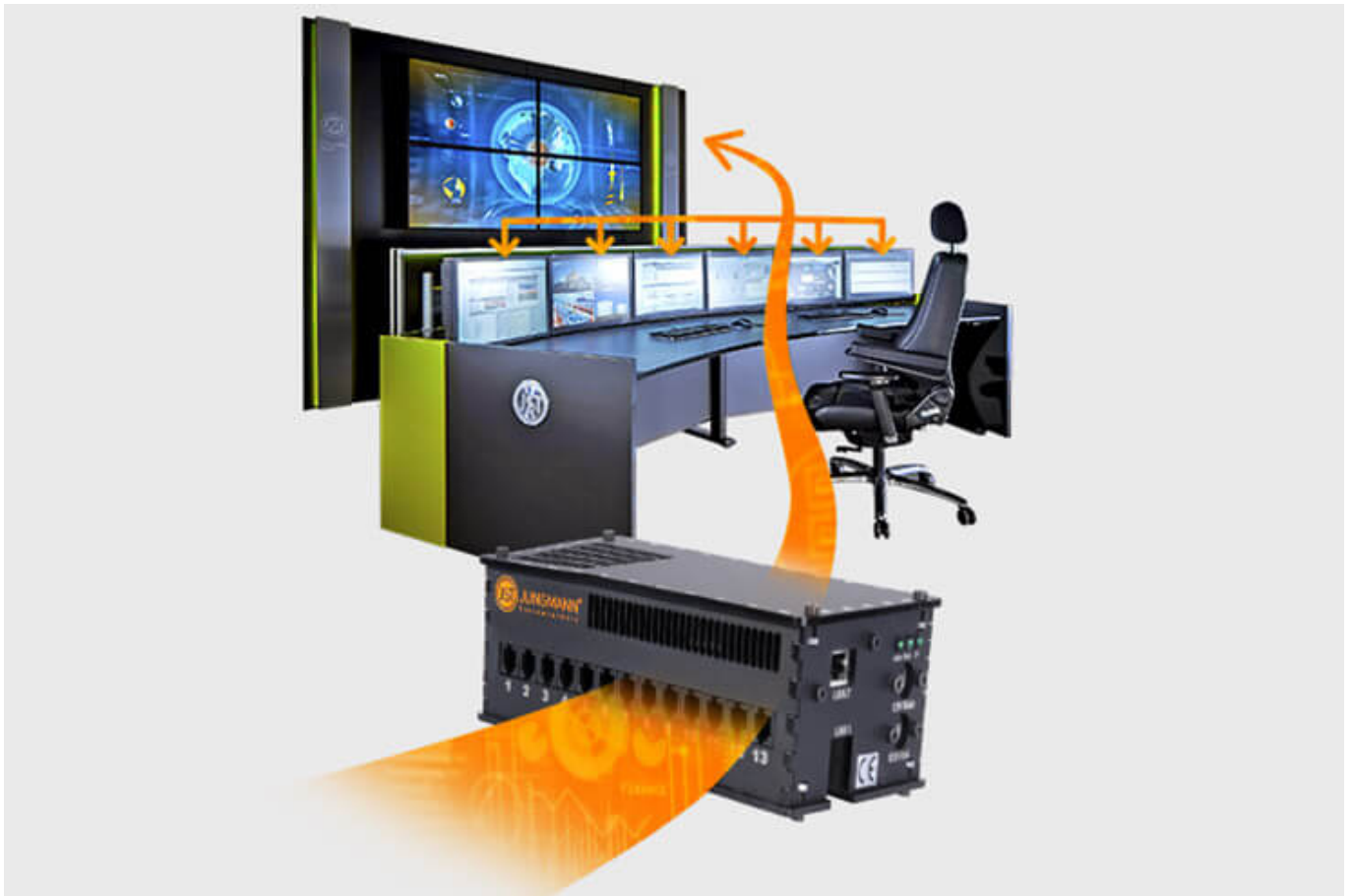
[More about myLogin[®]](#)



CockpitView – the operator’s dashboard

Create dashboards with content from different computers on different networks! CockpitView offers you the perfect overview of your most important applications at a glance. With CockpitView you can stay in control and reduce monitors at the workplace or even the large-format system.

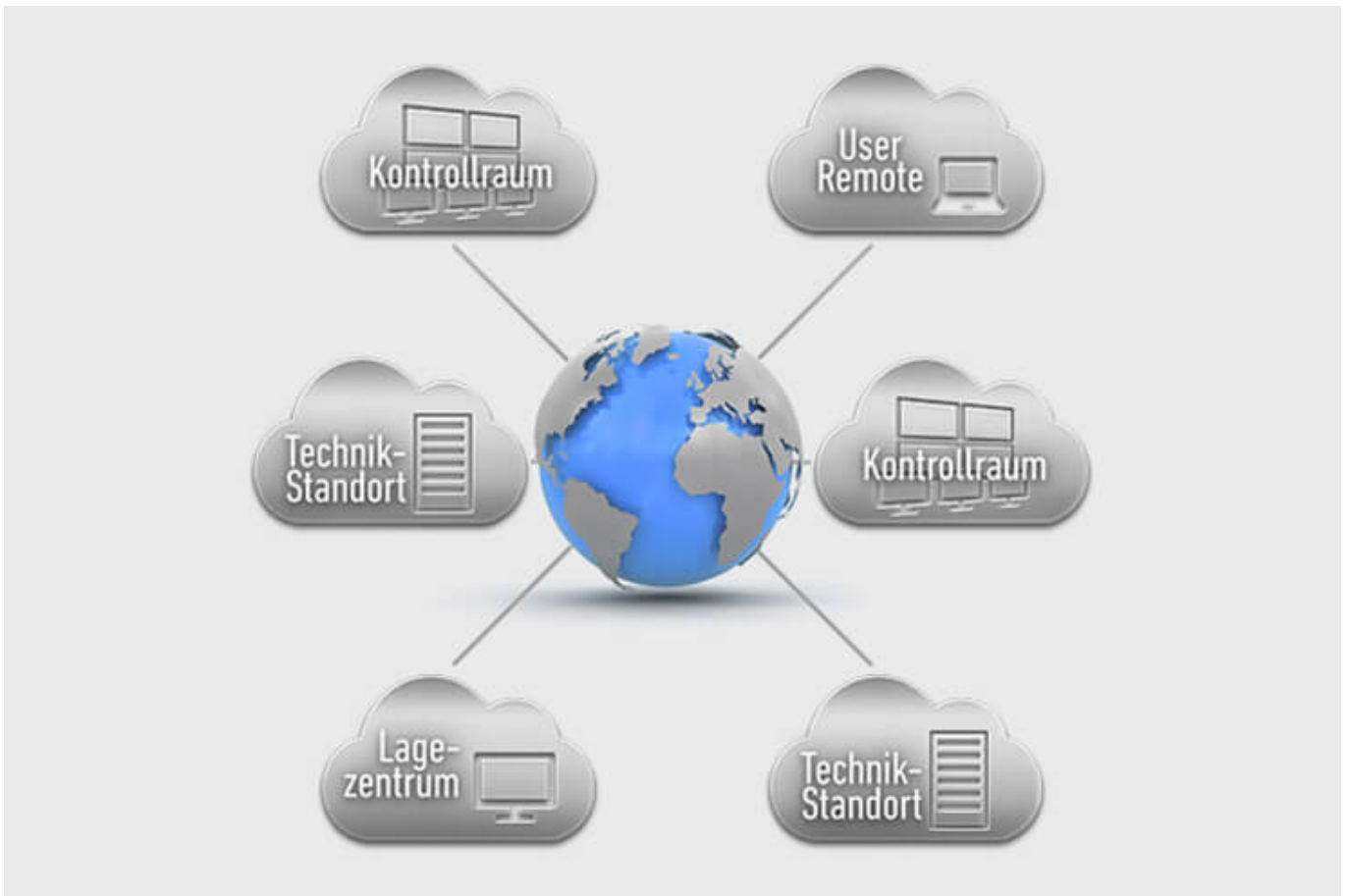
[More about CockpitView](#)



Automation for Videowalls and operator workstations

With the JST CommandBox, you can monitor circuits, relays, audio signals, and much more, and have them automatically switched on at defined workstations or on the monitor wall when critical values are detected. The range of applications is almost unlimited!

[More about ControlRoom Automation](#)



ControlRoom Remote: Connection of distributed systems and locations

The optional remote interface of JST Systems allows you to visualise and operate remote computers and entire control rooms. Even complex emergency scenarios for backup control rooms are feasible!

[More about ControlRoom Remote](#)



Computer relocation and PC remote control

By relocating computers from the control room to the technical room, you can reduce the thermal load and create more legroom for your employees. Additional advantages are the central administration of the computers as well as the physical access protection in the secured technical room.

[More about computer relocation](#)



Optional service and maintenance packages

To ensure that your control room stays as available as you need it to be, we offer preventative maintenance packages in various scopes and forms. You will receive customised solutions that will support your market and competitive success.

[More about service from JST](#)

Was möchten Sie als Nächstes tun?

Ich möchte

- [das kostenfreie Praxisbuch der Kontrollräume anfordern](#)
- [einen Rückruf für eine unverbindliche Beratung](#)
- [den Kontrollraum-Simulator in Buxtehude besuchen](#)
- [eine digitale 360°-Tour in einem Kontrollraum erleben](#)

- [mehr über Kontrollräume auf dem ko:mon Kongress erfahren](#)

We are happy to answer your questions on the construction of the process control room

0800-777 8 666

You are currently viewing a placeholder content from **YouTube**. To access the actual content, click the button below. Please note that doing so will share data with third-party providers.

[More Information](#)

[Unblock content](#) [Accept required service and unblock content](#)