



**Kostenfreie Beratung:**

 **0800 / 777 8 666**

## MultiConsoling® – the network- independent real- time control of your control room

MultiConsoling® is your real-time control center. It connects all desired sources – from the computer to the camera – with the monitors at the workplace, the large screen wall and even with the decentralized crisis room.



**Watch the video:**How does the system control work with MultiConsoling®?

**REQUEST A QUOTE**

## Convincing advantages of MultiConsoling<sup>®</sup>

- **Fast:** Image display and keyboard/mouse operation in real time
- **Intuitive:** 3D user interface in the design of the control room
- **Secure:** Transmission independent of the IP network
- **Flexible:** No additional software required on your source computers
- **Comprehensive control:** Connection of decentralized control rooms with high availability
- **Free-Seating:** The operator can change workplaces within a few seconds

## With MultiConsoling<sup>®</sup> the large display wall begins at the workplace!

MultiConsoling<sup>®</sup> simultaneously records all signals from the computer to be displayed (keyboard, mouse, monitor, audio), analogue or digital cameras, TV (image and audio) and distributes them in real time to individual displays or as a BigPicture to several large screens. Thanks to the myGUI<sup>®</sup> user interface, every operator has control of the video wall and the workstations within just four minutes!

**DRAWING AS PDF**

## Work station and large screen control with MultiConsoling®

### 1. The hardware components of MultiConsoling®

All sources (e.g. computers, cameras, SAT receivers, etc.) are installed in a **technical room**, away from the control room. The advantage for you: less heat and noise in the control room.

#### 1 TECHNICAL ROOM

MultiConsoling® works by accessing the sources to be displayed **without any network**, which means that it is highly available, secure and without any loss of image and audio quality. Transmission of mouse and keyboard entries is **guaranteed** to be instant.

The technical room contains grabbers, the MultiCenter, computers and myGUI® controller.

**B Grabbers** pick up the signals from the remote sources and forward these to the MultiCenter.

**C MultiCenter** provides up to 288 ports, depending on the model series, to connect the grabbers (computers) and the MultiConsoles.

#### No additional software required on your source computers

In most cases, running external software on sensitive sources such as alarm and process computers is not allowed, for warranty and security reasons. The myGUI® database is therefore only installed on a myGUI® controller.

#### noIP variant

#### Maximum security for the protection of KRITIS against a cyber attack: MultiConsoling® with noIP technology

The superbly effective solution from JST: consistent separation of the **office network** (internet), which is essential for employee communication, from the system **production network**. That means that the production network – of a power station, for example – works independently of the IP network.

So if a hacker should unexpectedly get as far as the **office network**, it is impossible to use the network to access the control room controls in the **production network** and thus the controls of all the systems.

#### A Remote sources (computers, TV receivers, other hardware)

The **mouse, keyboard, monitor and audio** are connected to a MultiConsole.

**D MultiConsoles** are housed in the control room. They are the receivers and are used to flexibly connect remote sources to display walls and work station monitors.

ACCESS DENIED

### 2. The software component of MultiConsoling®

All the computer signals in the technical room (keyboards, mouse, monitors, USB 2.0 data and audio signals) are brought together in the **MultiCenter** and forwarded in real time to the **multiconsoles** at work stations and display walls. All the computer signals, multiconsoles and display walls are displayed in the **myGUI® software** in the individual 3D layout of your control room. Operation is intuitive, with major advantages for your staff especially in stress situations.

#### 2 CONTROL ROOM

As soon as you drag a source with your Live Icon (real-time preview) to a required field in the myGUI®, the source can actually be seen on the desired display (**large-format screen or work station monitor**) and can be used in real time. All sources can be shifted from place to place or even operated by several operators at the same time. The operator can change work station in just a few seconds.



#### Respond instantly to alarms with the CommandButton Box

Automation for video walls and operator work stations: The operator can activate predefined scenarios by pressing a key on the Command-Button Box at the workstation.

#### Decentralised locations

#### ControlRoom Remote thanks to MultiConsoling®:

With the **MultiConsoling®** concept and the associated **myGUI®** interface, it is not only possible to control work stations and display walls easily. You are also able to connect to decentrally distributed computer systems independently of the IP network. This applies both for the decentralised technical room and remote back-up control room, including fully automated authentication.

As an option, the MultiConsoling® system can also be fitted with an IP interface. The distance from globally distributed control and technical rooms is then completely irrelevant.

## This hardware solution is convincing even in safety-critical settings

The user verdict says it all: “Flexibility, convenience, usability and real-time transmission without delay – comparable systems can’t keep up!” MultiConsoling® establishes new standards in hundreds of control stations. It is not only the effortlessly intuitive operation with the unique myGUI® user interface that is convincing. The focus is also on the security relevance of **KVM control**! MultiConsoling® makes network switches based on proprietary protocols obsolete. Thanks to special hardware components and the separation between the KVM system and the corporate network, MultiConsoling® is suitable even for security-critical facilities. Redundancy concepts for every security level ensure trouble-free control room operation.

## Intuitive user interface – comfort and

## safety with the myGUI® Controller

Clearly structured and intuitively understandable: the myGUI® user interface (GUI: Graphical User Interface) in the 3D layout of your control room has distinguished itself in practical tests for years. With one click, the operator controls workstations and large-screen technology as well as cameras, meeting rooms and building technology from any location.

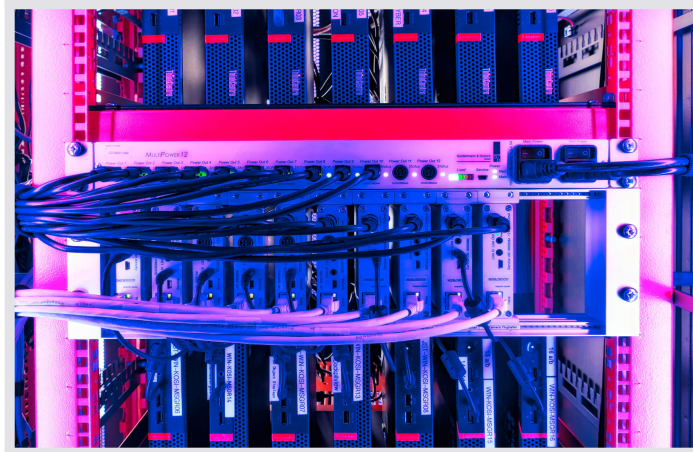
The JST development team combines this effortless control of all systems with reliable security standards for the highly sensitive sources in the control room environment – with the myGUI® controller, specially designed for the myGUI® database. You can easily implement strategic rights and role management using this solution. You decide who has access to the existing data and to what extent.



## **MultiConsoling® -Grabber: latency-free transmission with maximum security**

Performance, comfort and safety – how can a combination of these three requirements be realized even in safety-critical control room facilities? The hardware solutions of the MultiConsoling® system provide the perfect solution. In the outsourced equipment room, grabbers access signals from the protected source PCs, send them to the MultiCenter and thus make latency-free transmissions possible.

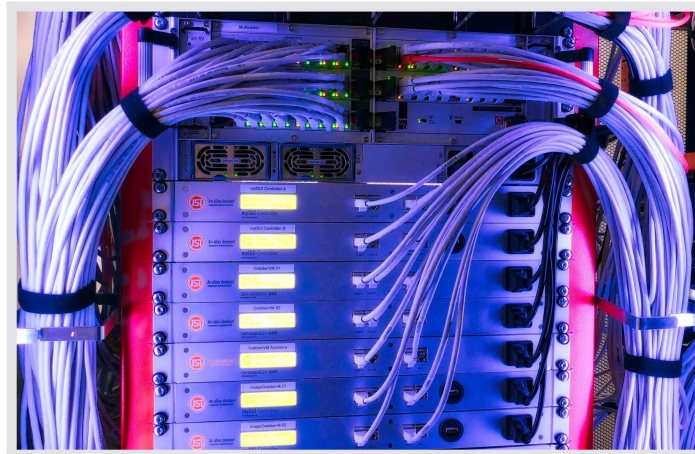
Without any compromise in quality, the grabbers can thus generate two benefits for control room operations at the same time: On the one hand, the security concept is taken into account, and on the other, the control room climate is optimized by reducing noise and heat. The MultiConsoling® concept completely eliminates the need for software installations.



## MultiConsoling<sup>®</sup> provides the direct link to the world of VMs

Immediate switching between virtuality and reality. GrabberVM technology, in combination with MultiConsoling<sup>®</sup>, enables the perfect integration of virtual systems. While one monitor is occupied with the applications of a conventional PC, another receives the signals of the virtual machine.

The operating concept allows direct access to the VM server sources via the GrabberVM. The user switches between the individual applications without noticeable differences. The advantages of this comfortable use of the Virtual Machines are obvious: more efficient deployment of the hardware with a quantitative reduction of the required components, but also reduced maintenance and energy costs with high availability.



Do you have questions about the MultiStreaming or MultiConsoling<sup>®</sup>? We will be happy to assist you!

 **+49 4161 – 54044-0**

## A secure foundation for the tasks of the future

Clever software solutions from the JST developer forge create new perspectives for the operator's job. 100 percent compatibility! This applies in combination with the MultiConsoling® concept both to the PixelDetection® monitoring software and to an individually configurable dashboard with JST CockpitView®. Perfect tools in times of Big Data!







A convincing technical concept in the Smart Control Center of GETEC Switzerland, in the industrial park Muttenz near Basel. Reno Schröder (technical project manager) about process control via MultiConsoling<sup>®</sup>:  
“We looked around on the market. However, comparable systems could not keep up in terms of performance, intuitive interfaces or real-time mouse movements.”



Flexible source switching is possible without delay in GETEC's Smart Control Center with MultiConsoling®: The monitor at the front right clearly displays all sources with the myGUI® graphical user interface, thus facilitating intuitive operation.



Highest possible fail safety for critical infrastructures: In the network control center of Travenetz in Lübeck, the MultiCenter, the heart of the JST MultiConsoling® system, was designed redundantly.



With the CommandPads integrated into the table surface, every operator at the Travenetz control center in Lübeck has all sources permanently in view. Control via the MultiConsoling® system becomes child's play with the myGUI® user interface.



Multiple redundant systems at the transmission system operator Tennen: A seamless and trouble-free power supply has top priority. In order to warranty this also during a migration process, the project managers decided to use the JST MultiConsoling®.



Innovative technical components as the basis for the MultiConsoling® control room system support Germany's smooth power supply in the two control centers of the transmission system operator Tennet. Project manager Patrick Bernasch-Mellech lists some of the advantages of the new technology: "Colleagues switch back and forth quickly and without barriers. Whether power plant deployment or weather reports – they access all the important data on the situation in the German power grid."



Redundancy for maximum safety on the site of STORAG ETZEL's cavern storage facility in Friedeburg, Lower Saxony. The lower two components are the MultiCenter for control room operation with MultiConsoling® – here in double version for maximum safety.



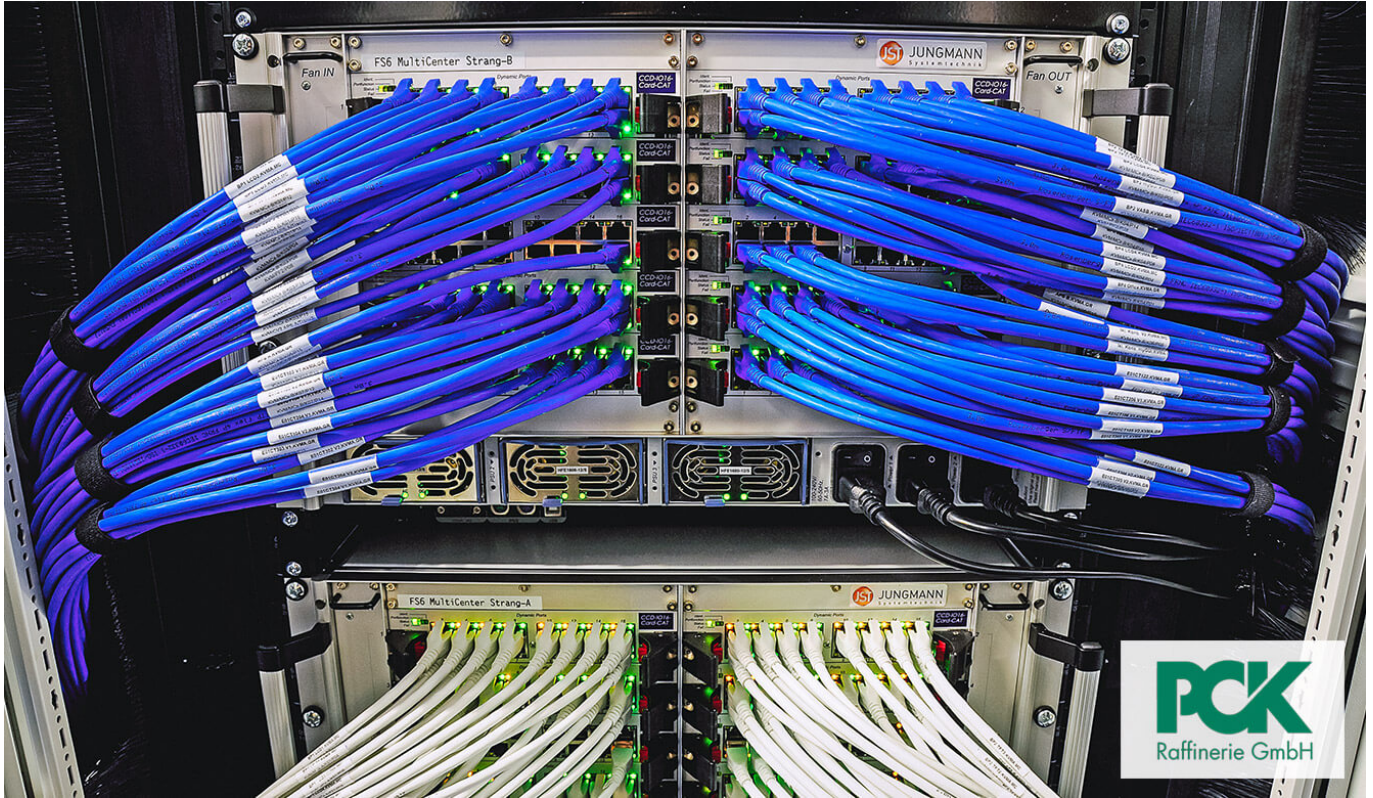
Intuitive and clear: The arrangement of sources in the myGUI® user interface makes getting started with MultiConsoling® technology at Stadtwerke Steinburg child's play. With just a mouse and a keyboard, all applications can be switched on to any monitor. The formerly complicated handling with elaborate operating steps is a thing of the past.



Convenient solution for system control with MultiConsoling® in the network control center of Stadtwerke Steinburg: On the CommandPad – here in the mobile version – all sources are clearly displayed and can be operated directly on the touchscreen.



The view into the technical room of Stadtwerke Steinburg reveals some of the hardware elements for the JST MultiConsoling<sup>®</sup> operating concept: Grabber with associated power unit. Since the individual components can be outsourced thanks to MultiConsoling<sup>®</sup>, the heat and noise pollution in the control room is significantly reduced.



The entire technical concept of Europe's most modern refinery measuring station in Schwedt, Brandenburg, is based on the MultiConsoling<sup>®</sup> system from JST. Multiple redundancy warrants for PCK Raffinerie GmbH a plant availability of almost 100 percent with maximum ease of operation.





**STORAG ETZEL**  
Energy Storage Solutions

The intuitive myGUI® user interface was one of the reasons why the control room team at STORAG ETZEL in Friedeburg opted for the control room operation with MultiConsoling® with broad agreement. The operators were also convinced by the flexible handling of the system in the measuring station responsible for gas storage.



**Teamviewer**

**Videowalls  
im Kontrollraum**

You are currently viewing a placeholder content from **YouTube**. To access the actual content, click the button below. Please note that doing so will share data with third-party providers.

[More Information](#)

[Unblock content](#) [Accept required service and unblock content](#)



You are currently viewing a placeholder content from **YouTube**. To access the actual content, click the button below. Please note that doing so will share data with third-party providers.

[More Information](#)

[Unblock content](#) [Accept required service and unblock content](#)

# NEUER LEITSTAND FÜR DIE WISSENSCHAFT

INTERVIEW MIT **INGO MÜLLER**  
(HELMHOLTZ ZENTRUM BERLIN)

An alles denken!

Jungmann Systemtechnik



You are currently viewing a placeholder content from **YouTube**. To access the actual content, click the button below. Please note that doing so will share data with third-party providers.

[More Information](#)

Unblock content Accept required service and unblock content

# NEUE EINSATZLEITSTELLE

PROTEC SERVICE GMBH

An alles denken!

Jungmann Systemtechnik



You are currently viewing a placeholder content from **YouTube**. To access the actual content, click the button below. Please note that doing so will share data with third-party providers.

[More Information](#)

Unblock content Accept required service and unblock content



**NEUE  
NETZLEITSTELLE**  
OVAG NETZ GMBH

**An alles denken!**

Jungmann Systemtechnik



You are currently viewing a placeholder content from **YouTube**. To access the actual content, click the button below. Please note that doing so will share data with third-party providers.

[More Information](#)

Unblock content Accept required service and unblock content

# UMBAU DER LEITWARTE

MEDIZINISCHE HOCHSCHULE  
HANNOVER

An alles denken!

Jungmann Systemtechnik



You are currently viewing a placeholder content from **YouTube**. To access the actual content, click the button below. Please note that doing so will share data with third-party providers.

[More Information](#)

[Unblock content](#) [Accept required service and unblock content](#)

## Documents on MultiConsoling®

- [MultiConsoling® data sheet](#)
- [Project report from OttoGroup \(PDF\)](#)
- [Convenient system operation using the example of the DREWAG control room Dresden-Reick \(PDF\)](#)

Would you like to learn more about MultiConsoling®?



I would like a callback for a non-binding consultation from the control room specialists at JST!

0800 / 777 8 666

Schedule a telephone consultation appointment. The consultation is **free of charge** and without obligation.

---

You are currently viewing a placeholder content from **YouTube**. To access the actual content, click the button below. Please note that doing so will share data with third-party providers.

More Information

Unblock content Accept required service and unblock content

I would like to visit the Europe-wide unique control room simulator!

**SCHEDULING A "TEST DRIVE"**

<https://www.jungmann.de/>

Visiting the control room simulator is **free of charge**.  
We ask for registration and reservation of dates.



I would like to receive “The Great Praxis Book of Control Rooms” from JST!

**REQUEST FREE OF CHARGE**

The praxis book is free of **charge** for JST customers.

**Chosen by leading companies and institutions**



## What clients report about their experience with JST – Jungmann Systemtechnik®



### **STORAG ETZEL** Energy Storage Solutions

A mosaic wall with which line paths and measured values were mapped – “that was no longer state of the art”. Today, the measuring station works with modern control room visualization and flexible control from JST – Jungmann Systemtechnik®.

Head of Process Control Technology at STORAG ETZEL Service GmbH

**TO THE PROJECT**





Give a “thumbs up” for the JST installation in the Swiss multi-client site – a gesture that could hardly be clearer. Conclusion: “This solution is not only extremely high-performance, but also very scalable.”

Project Management (GETEC Switzerland) // General Planning (Administra GmbH – Construction Management)

**TO THE PROJECT**

---



“What was presented to us in the control room simulator made me a fan of the project from the start”

Division Manager Network Management // Project Manager

## TO THE PROJECT



” During my research on the German market, I have not been able to find anything that even comes close to this functionality and ease of use.”

Head of Network Management ovag Netz GmbH

## TO THE PROJECT



Thanks to their close cooperation during the control station project, they were able to make the processes in first-level support at eu-LISA not only clearer, but also more secure.

JST Consultant / SIS II Service Owner eu-LISA

## TO THE PROJECT



“Intervene before there is any damage – we achieve this goal with the solutions from JST. The FOC serves as our business card, so to speak, and demonstrates our expertise in the digitization of service to our customers.”

Fleet Operations Center Head – FOC Helpdesk / Operator

**TO THE PROJECT**

---



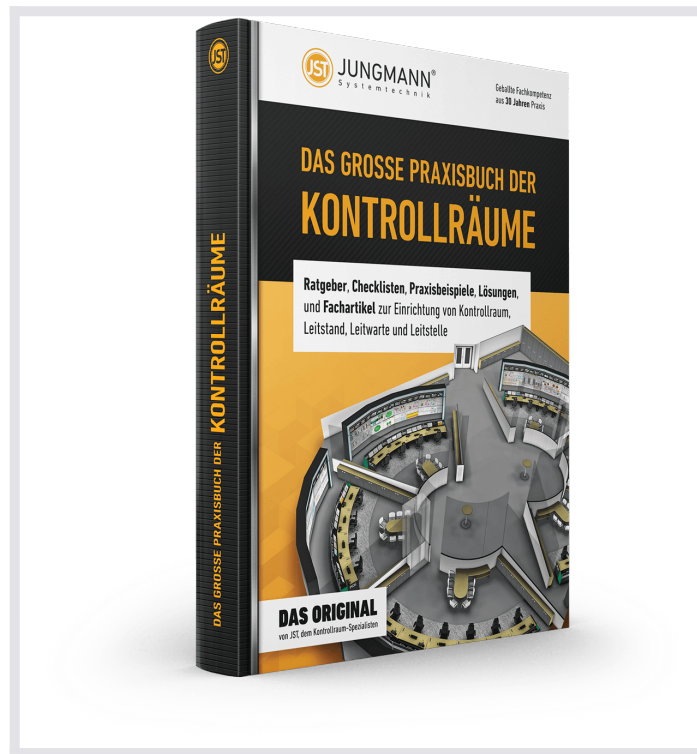
“We have sounded out the market thoroughly and are simply convinced that JST is the best partner for us. Consulting, technology and quality are right. At JST, you’re dealing with professionals from A to Z.”

Managing Director of Mineralölverbundleitung (MVL) GmbH Schwedt

## **TO THE PROJECT**

---

## **THE GREAT PRACTICAL BOOK OF CONTROL ROOMS**



**Guidebooks, checklists, practical examples, solutions and technical articles** for the installation of control rooms, control stations and control centers

**REQUEST FREE OF CHARGE**

The great practical book of control rooms is free of charge for JST customers and interested parties.

## **Experience more at a planning workshop in the control room simulator**

**Having visions of the future is good. Experiencing is better!** Visit the control room simulator, unique in Europe, where state-of-the-art technology and the latest ergonomic know-how are combined. The control room of the future. **The special feature:** Here you can touch everything and try it out for yourself.

**MAKE AN APPOINTMENT**

Whether virtual or live on site – the workshop in the control room simulator is **free of charge**.  
**We kindly ask for prior registration.**

- [Watch video](#)