



Kostenfreie Beratung:

 **0800 / 777 8 666**

Constant control with PSM – Proactive System Monitoring

React before a deviation escalates to a malfunction. The PSM module (Proactive System Monitoring) monitors the devices in the control room based on permanent status and diagnostic data. If a discrepancy is detected, the JST service team starts working on the basis of coordinated actions.



**REQUEST A
QUOTATION**

This subpage is currently under construction

In the discipline of control room equipment, we are experiencing unprecedented challenges. New concepts and systems are in demand. In the JST development laboratories, standstill is an alien concept. The launch of new solutions for highly efficient control rooms is imminent. Please be patient for a little while longer.

The contents of this page are currently being prepared for you.

Would you like to learn more about JST's Proactive System Monitoring ?



I would like a callback for a non-binding consultation from the control room specialists at JST!

0800 777 8 666

Telefonischen Beratungstermin vereinbaren. Die Beratung ist **kostenfrei und unverbindlich**.

<https://www.jungmann.de/>

You are currently viewing a placeholder content from **YouTube**. To access the actual content, click the button below. Please note that doing so will share data with third-party providers.

[More Information](#)

[Unblock content](#) [Accept required service and unblock content](#)

I would like to visit the Europe-wide unique control room simulator!

SCHEDULING A "TEST DRIVE"

Visiting the control room simulator is free of **charge**.

We ask for registration and reservation of dates.

Gerne auch als **interaktives Online-Meeting**



I would like to receive “The Great Practice Book of Control Rooms” from JST!

REQUEST FREE OF CHARGE

The praxis book is **free** of charge for JST customers.

Chosen by leading companies and institutions

R R
Z –

otto group

STADT  FRANKFURT AM MAIN

LVM
VERSICHERUNG

 *windmanager*

 GLOBAL TECH I

R+V

plusnet
Ein Unternehmen der QSC AG

 **eesa**

What clients report about their experience with JST – Jungmann Systemtechnik®



wpd windmanager

„Die Zusammenarbeit mit JST lief optimal.“

Marc Rosenkranz

Zuständig für die Leitung des First Level Services und die neue Leitwarte in Bremen

TO REFERENCES





“Die richtigen Informationen zur richtigen Zeit verfügbar zu haben, ist für meine Mitarbeiter die Grundlage für ein erfolgreiches Incident-Management.”

Georg Lemmen
Senior Manager / Infrastructure Services

TO REFERENCES



„Für uns hat sich der gemeinsam mit Jungmann beschrittene Weg als beste Entscheidung erwiesen. Man merkt sofort: Hier arbeitet man mit einem Partner, der über große Erfahrung verfügt.“

Tonio Proetel (links) / Walter Klein (rechts)
Projektleiter / Mitarbeiter im Projekt-Team

TO REFERENCES



Volkswagen

„Die Entscheidung `Das ist das Richtige für uns´ fiel im Kontrollraum-Simulator.“

Andreas Stange
Projektleiter

TO REFERENCES

**This might interest you too:
Professional control center planning with the following components**



PixelDetection® – the operator's eye

Shorten your reaction times! With PixelDetection® you receive the right alarm at exactly the right moment and always keep an overview. Proven for many years and repeatedly awarded, PixelDetection® is also called the "artificial eye of the operator".

[More about PixelDetection](#)



JST myLogin® – the operator's login

JST myLogin® is a revolutionary solution that allows you to log on and off centrally and quickly at all operator workstations with your company ID card. The login/logout process only takes a few moments. If desired, your personal arrangement of the screen contents can also be saved.

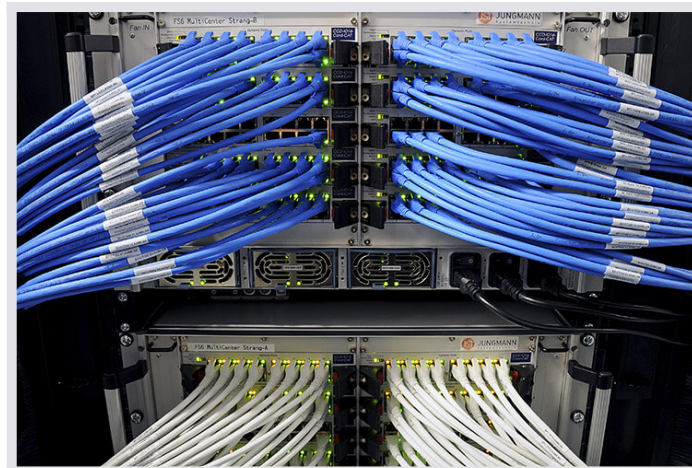
[More about myLogin®](#)



CockpitView – the operator’s dashboard

Create dashboards with content from different computers on different networks! CockpitView offers you the perfect overview of your most important applications at a glance. With CockpitView you stay in control and can reduce monitors at the workstation or even the large screen system.

[More about CockpitView](#)



MultiConsoling[®] – die Kontrollraum-Schaltzentrale

MultiConsoling[®] is the highly available control center to connect all signals of your systems with the monitors at the operator station and on the monitor walls. The transmission takes place in real time and no software is required on your computers.

More about MultiConsoling[®]



myGUI[®] – Bedienoberfläche für Großbildsystem, Arbeitsplatz & Infrastruktur

The intuitive myGUI[®] user interface in the 3D layout of your control room offers highest ease of use of your MultiConsoling[®] system. With one click you can operate workstations, monitor walls and infrastructure – always absolutely safe and outstanding in stressful situations.

More about myGUI



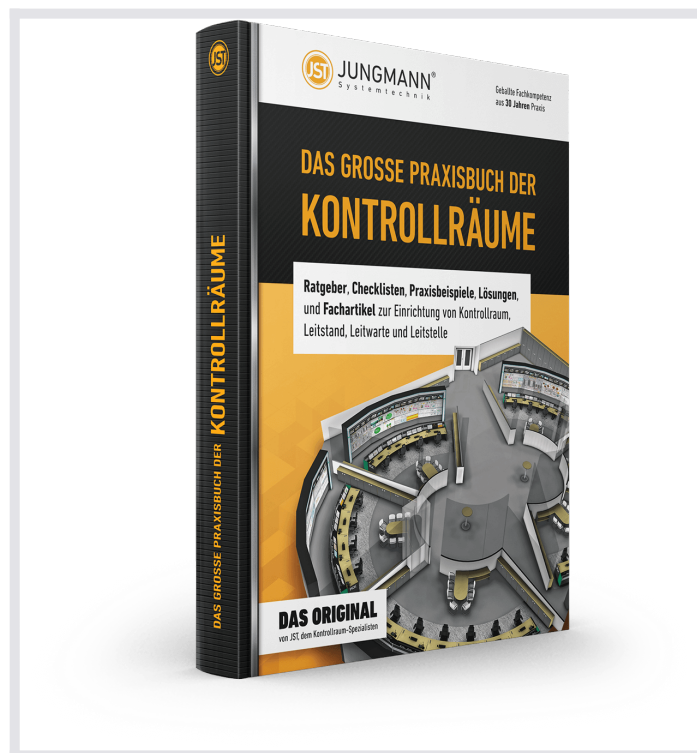
Kontrollraum-Möbel: ergonomische Operator-Pulte, Recaro-Operatorstuhl, AllMedia Conference-System

Furniture and technology are available from JST from one source. he height-adjustable and highly stable

Stratos operator consoles and matching surrounding furniture form the ergonomic basis for your control room.

[More about the control room furniture](#)

THE GREAT PRACTICAL BOOK OF CONTROL ROOMS



Guidebooks, checklists, practical examples, solutions and technical articles for the installation of control rooms, control stations and control centers

REQUEST FREE OF CHARGE

The great practical book of control rooms is free of charge for JST customers and interested parties.

Experience more at a planning workshop in the control room simulator

Having visions of the future is good. Experiencing is better! Visit the control room simulator, unique in Europe, where state-of-the-art technology and the latest ergonomic know-how are combined. The control room of the future. **The special feature:** Here you can touch everything and try it out for yourself.

MAKE AN APPOINTMENT

Whether virtual or live on site – the workshop in the control room simulator is **free of charge**.
We kindly ask for prior registration.

- [Watch video](#)