

JST offers technically innovative and ergonomic solutions for modern control room planning

Are you about to **start planning your control room** and want **professional support**? Then talk to the experts at JST about your wishes and ideas! We have valuable **experience from numerous projects** and look forward to assisting you with control room planning. We plan each control room according to the latest **ergonomic and technical aspects**.

In our analysis, we pay careful attention to all components such as **ergonomics, viewing distances and angles, hardware, software, infrastructure, adaptation of existing systems, network and optimal lighting**. Topics such as communication and indoor climate are also included. On request, we can present our finished control room planning to you in a **realistic 3D view**.

OFFER FOR CONTROL ROOM PLANNING



NETZE
Magdeburg

- Control room planning based on baua Study, BG, VBG
- Compliance with escape routes and DIN EN50518

- Tried and tested planning packages for the control room
- Thought of everything: lighting, acoustics, climate
- Technically perfect: IT architecture, interfaces, rack planning



Practical examples: Control room planning during implementation

Our customers' wish: professional control room planning, where everything is systematically taken into account. The JST planning team fulfils this requirement perfectly. The experts at Jungmann Systemtechnik **know what control room dreams are made of** and what is important for control room planning. In this way it is always possible to enthuse all those involved on the customer side **for the upcoming project**. Essential components of the concept are the **use of innovative technology** and an **interior design that is coordinated with the architectural building design**. Please feel free to have a look through our reference projects and see our top results for yourself.

We will be happy to put you in touch with the appropriate contact person.

Innovative upgrade for power supply control centre

“Electricity everywhere and at all times” – according to this guiding principle, around 160,000 so-called extraction points in and around Magdeburg are supplied with electricity. Responsible for this: Netze Magdeburg GmbH, a 100% subsidiary of Städtische Werke Magdeburg In order to remain true to this maxim at all times, the power supplier has now brought in a strong partner. With the support of Jungmann Systemtechnik GmbH, the power supply control centre was extensively modernised.

[GO TO PROJECT](#)



NETZE
 **Magdeburg**

"That was really an excellent collaboration. Our individual wishes were met immediately. And also in retrospect I have to say that the entire system is very easy to maintain. There are no problems with the software or the technology. Really great!"

Karl-Ludwig Stephan

Project Manager

<https://www.jungmann.de/>



State-of-the-art control room with perfect alarm management

250 elevators, 240 escalators, 2,000 ventilation systems – the technical control room at Munich Airport monitors around 300 buildings with almost 28,000 rooms. Thanks to a complete refurbishment with technical equipment and furniture from JST – Jungmann Systemtechnik, the operators of the technical control room can now handle this substantial task much more professionally.

GO TO PROJECT



"This used to be just an office; today we can really call it a state-of-the-art control room."

Karl Rubsch

Responsible for the control room engineering at the Munich Airport



Optimum conditions created for the technical control room

Regardless of whether only one bulb fails or a complex operation has to be coordinated in case of a fire alarm. All the pieces come together in the control room for technical control at the Hannover Medical School. With an area of around 400,000 square metres, the hospital campus is the size of around 50 football pitches. In order to meet the increasing requirements to cope with ever new tasks on this huge area and to create optimal conditions in the control room, the responsible persons have sought professional support from Jungmann Systemtechnik.

GO TO PROJECT



Praising the professional work of the control room specialists: "JST has always been responsive to our needs"

Andreas Müller

Project Manager



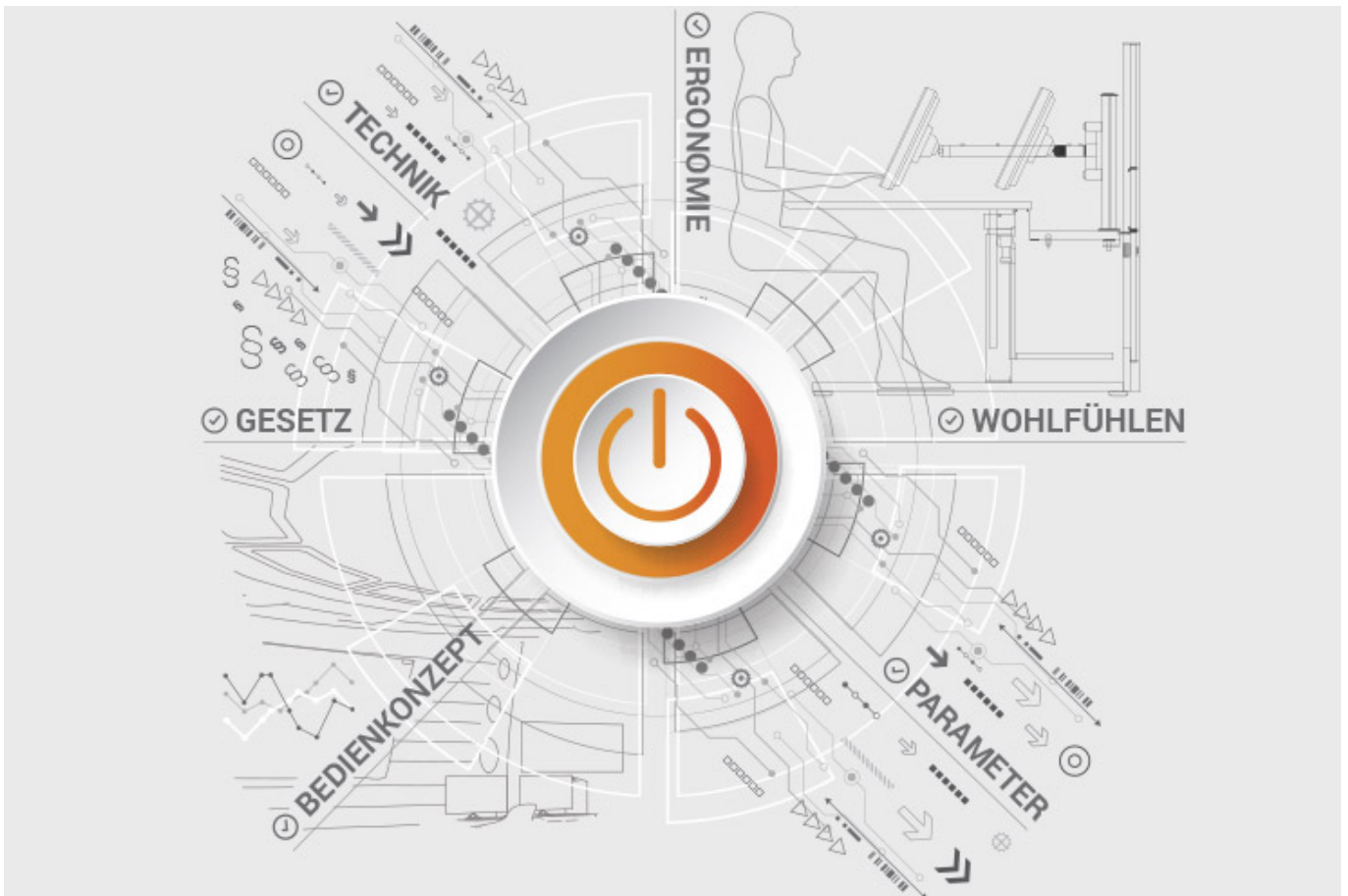
ALL PROJECTS

Documents for download

- [Project report on the new central control room of Infraleuna \(PDF\)](#)

JST product overview: Think of everything!

Control room planning with the following components



Analysis and planning of your control room

Are you planning changes in your control room? Or would you like to breathe some fresh air into your control room? Then make use of the proven [planning packages](#) or the free [online analysis](#) from JST. Our experts will support you in accordance with [BAUA: Study](#) and all important standards and guidelines.

[More about the free analysis](#)



Large-display technology – react faster!

Proactively present important information to the right people – before an incident can have a major impact. With scalable large display walls based on LCD displays and Cube technology, we are sure to find the right large-format system for your 24/7 operation!

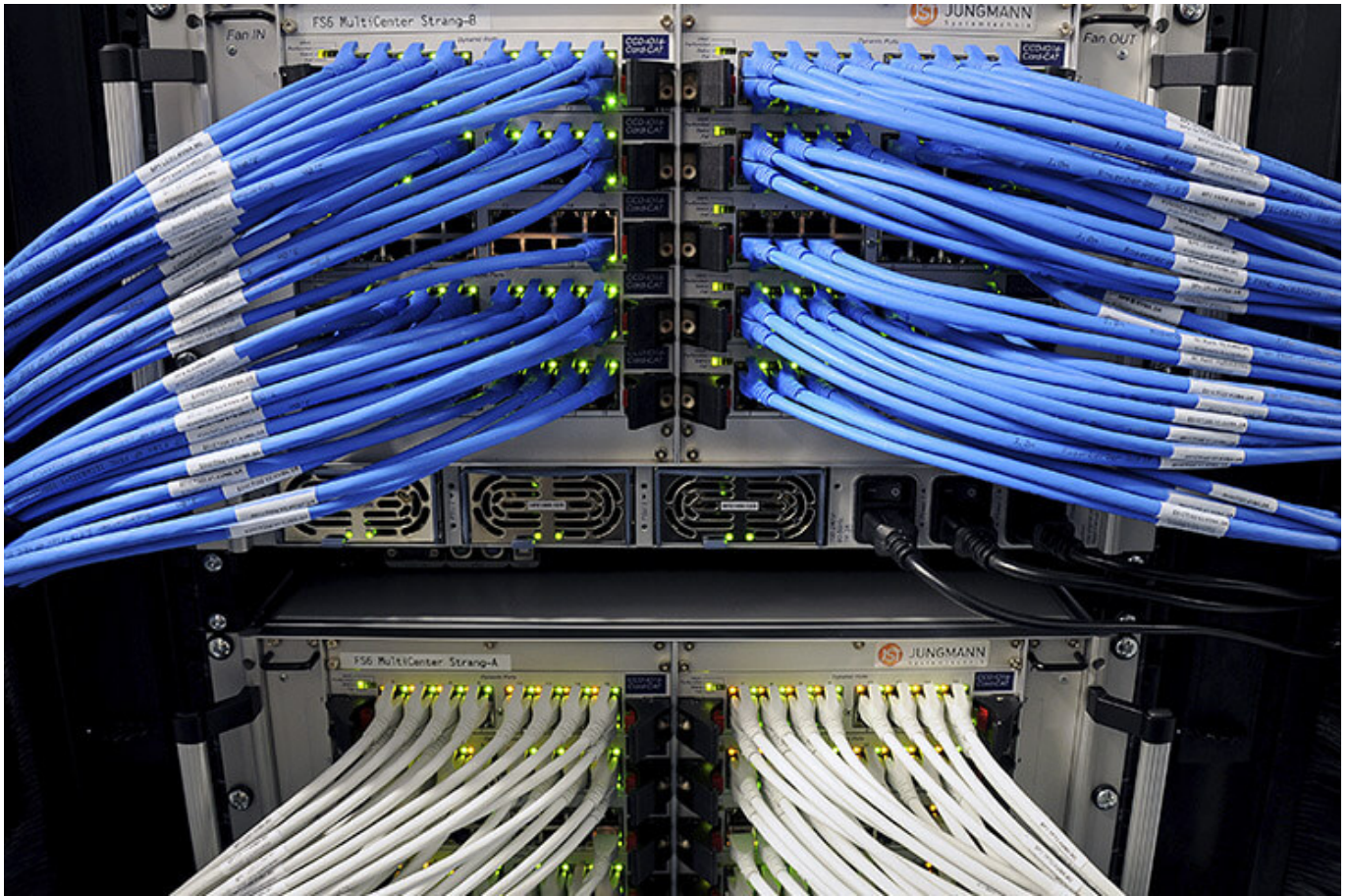
More about JST large-display technology



myGUI® – User interface for large-format system, workplace & infrastructure

The intuitive myGUI® user interface in the 3D layout of your control room offers maximum operating convenience for your MultiConsoling® system. With just one click you can operate workstations, monitor walls and infrastructure – always absolutely safe and excellent in stressful situations.

More about myGUI[®]



MultiConsoling® – The Control centre control room

MultiConsoling® is the high-availability control centre for connecting all of the signals from your systems to the monitors at the operator's workstation and on the monitor walls. Transmission takes place in real time and does not require any software on your computers.

[More about MultiConsoling®](#)



Control room furniture: ergonomic operator consoles, Recaro operator's chair, AllMedia Conference System

You can get furniture and technology from a single source at JST. The highly stable Stratos operator consoles, with height adjustment and suitable surrounding furniture, form an ergonomic base for your control room.

[More about control room furniture](#)



Large-screen control system with graphic controller

With the IP-based graphic controller you can get your monitor wall going. The graphic controller records all video signals over the IP network simultaneously and spreads them out at any position and in any scale on the large display wall.

[More about graphic controllers](#)



PixelDetection® – the operator's eye

Shorten your reaction times! With PixelDetection®, you will receive the right alarm at exactly the right moment and always be able to see an overview. Proven for many years and repeatedly awarded, PixelDetection® is also known as the “artificial eye of the operator”.

[More about PixelDetection®](#)



JST myLogin[®] – the operator's login

JST myLogin[®] is a revolutionary solution for logging on and off centrally and quickly from all operator workstations with your company ID. The login/logout process only takes a few moments. If you want, you can also save your personal layout of the screen contents.

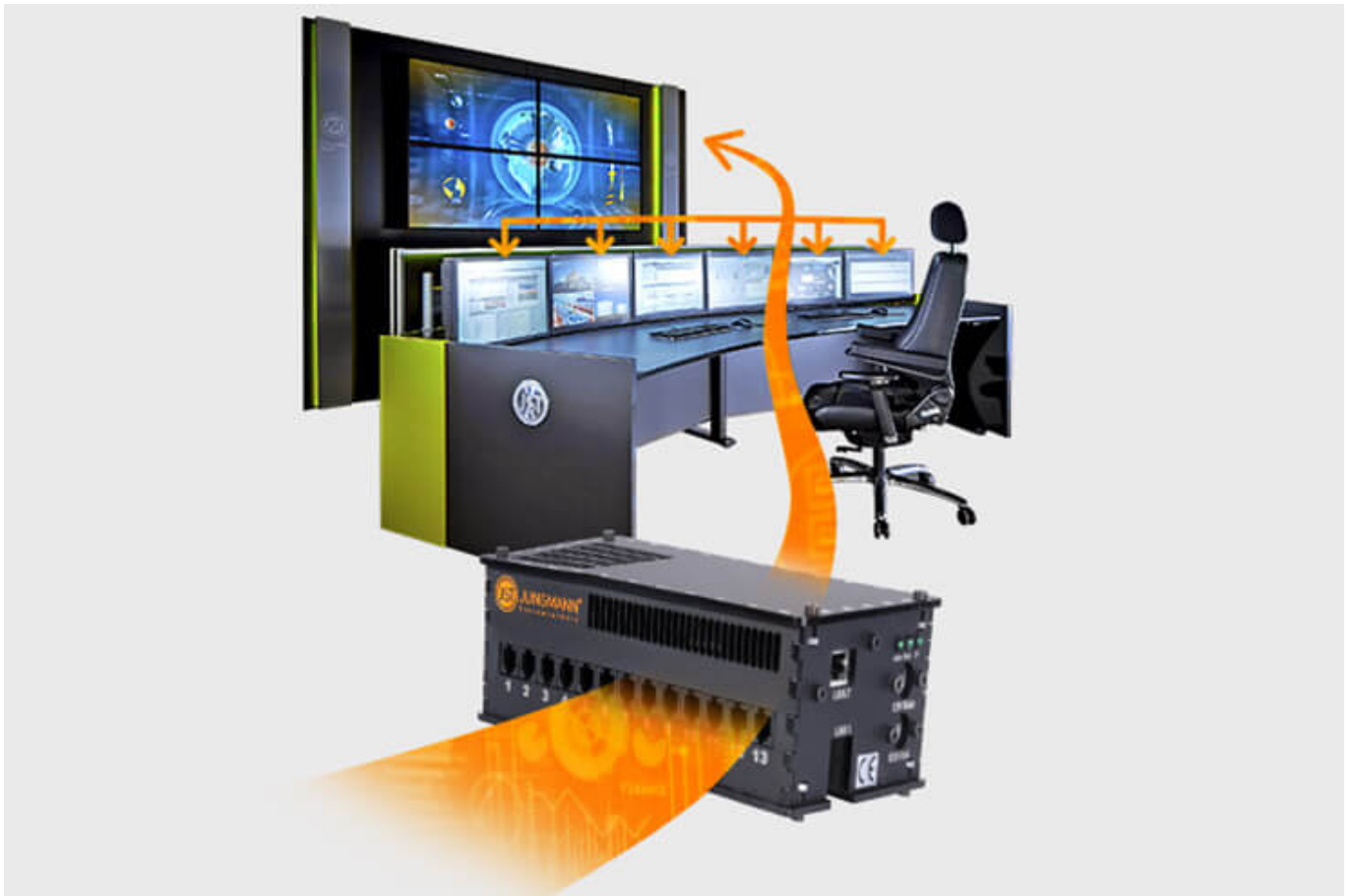
[More about myLogin[®]](#)



CockpitView – the operator’s dashboard

Create dashboards with content from different computers on different networks! CockpitView offers you the perfect overview of your most important applications at a glance. With CockpitView you can stay in control and reduce monitors at the workplace or even the large-format system.

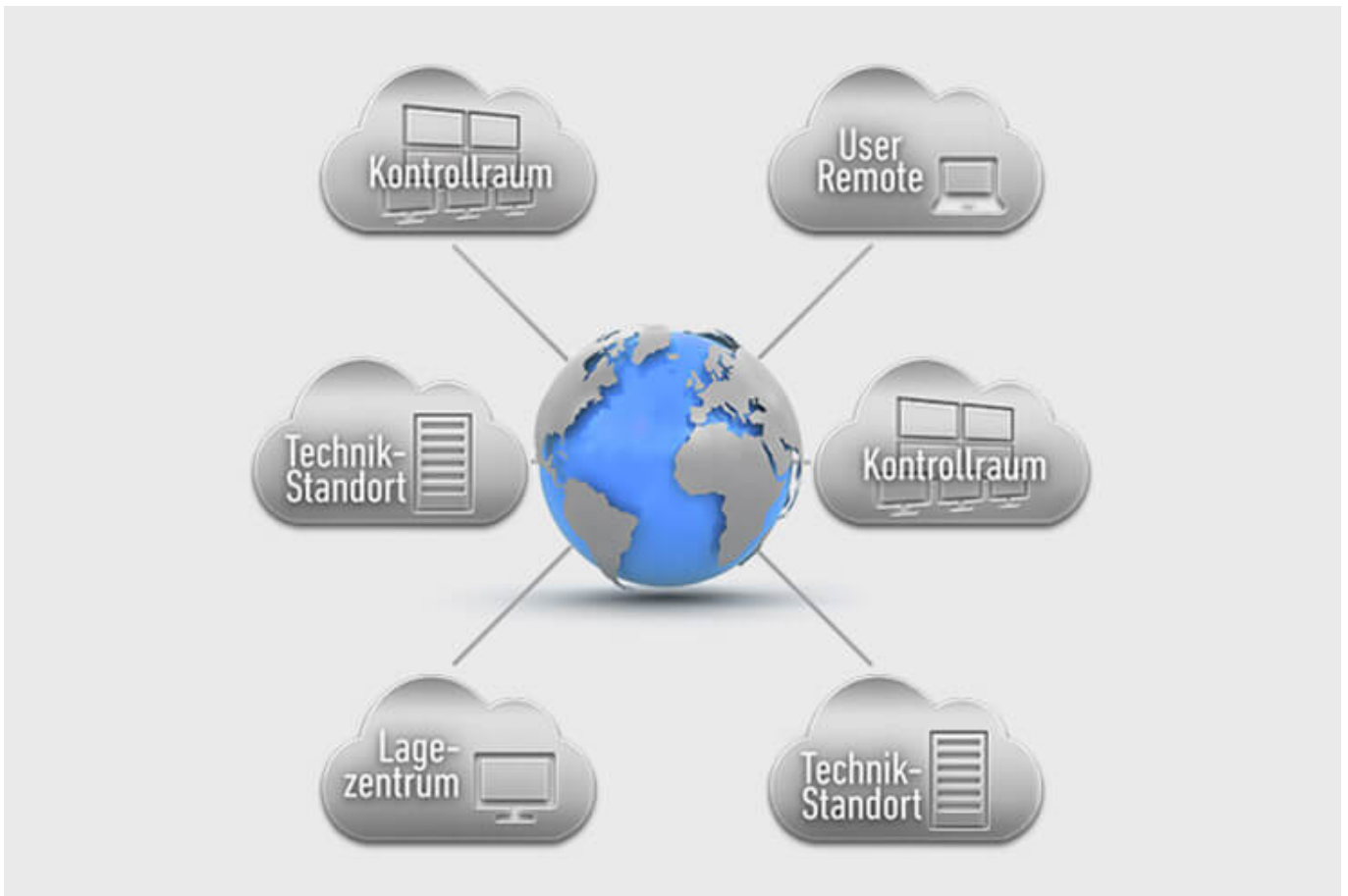
[More about CockpitView](#)



Automation for Videowalls and operator workstations

With the JST CommandBox, you can monitor circuits, relays, audio signals, and much more, and have them automatically switched on at defined workstations or on the monitor wall when critical values are detected. The range of applications is almost unlimited!

[More about ControlRoom Automation](#)



ControlRoom Remote: Connection of distributed systems and locations

The optional remote interface of JST Systems allows you to visualise and operate remote computers and entire control rooms. Even complex emergency scenarios for backup control rooms are feasible!

[More about ControlRoom Remote](#)



Computer relocation and PC remote control

By relocating computers from the control room to the technical room, you can reduce the thermal load and create more legroom for your employees. Additional advantages are the central administration of the computers as well as the physical access protection in the secured technical room.

[More about computer relocation](#)



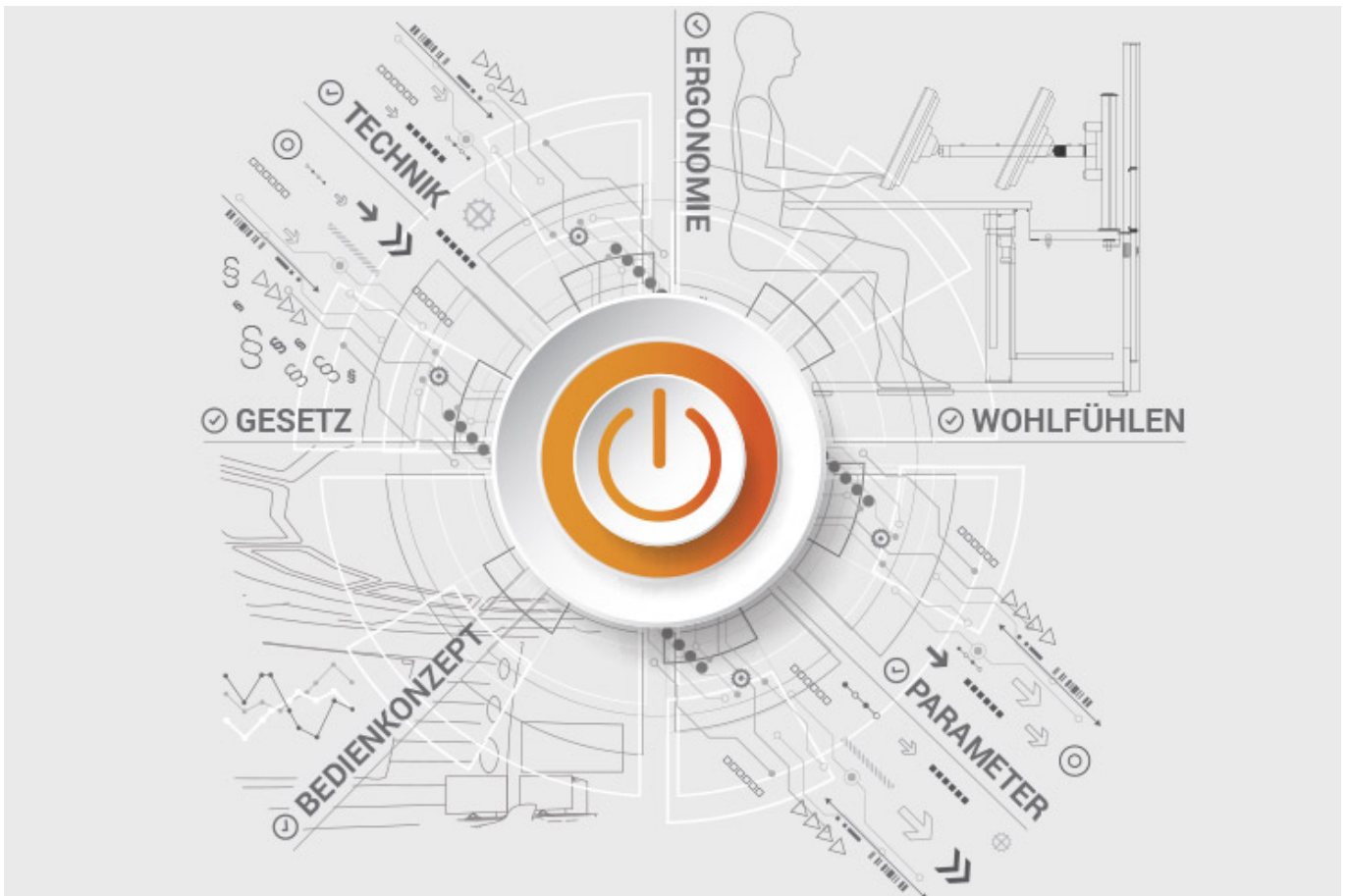
Optional service and maintenance packages

To ensure that your control room stays as available as you need it to be, we offer preventative maintenance packages in various scopes and forms. You will receive customised solutions that will support your market and competitive success.

[More about service from JST](#)

JST product overview: Think of everything!

Control room planning with the following components



Analysis and planning of your control room

Are you planning changes in your control room? Or would you like to breathe some fresh air into your control room? Then make use of the proven planning packages or the free online analysis from JST. Our experts will support you in accordance with BAUA: Study and all important standards and guidelines.

More about the free analysis



Large-display technology – react faster!

Proactively present important information to the right people – before an incident can have a major impact. With scalable large display walls based on LCD displays and Cube technology, we are sure to find the right large-format system for your 24/7 operation!

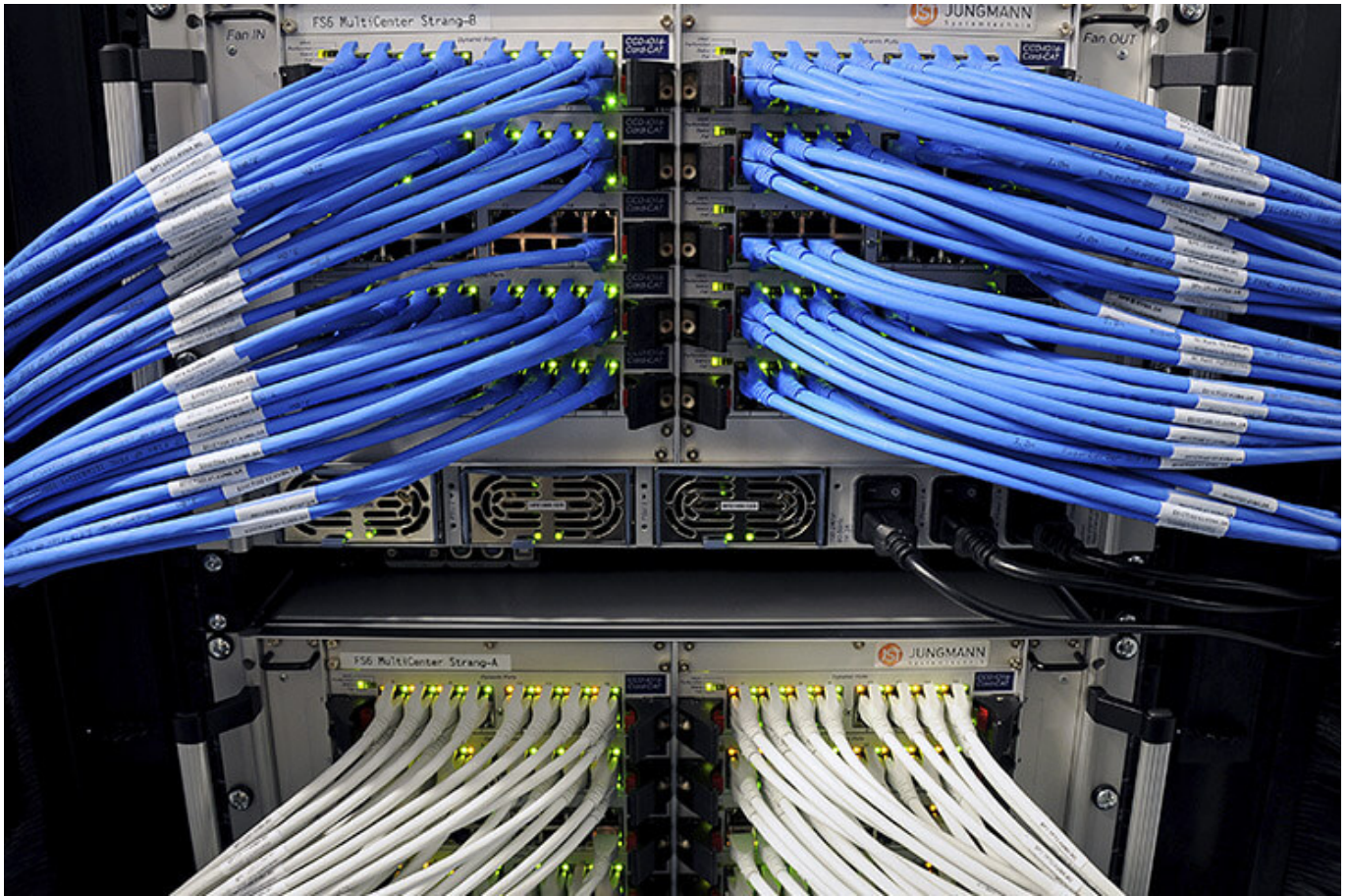
More about JST large-display technology



myGUI® – User interface for large-format system, workplace & infrastructure

The intuitive myGUI® user interface in the 3D layout of your control room offers maximum operating convenience for your MultiConsoling® system. With just one click you can operate workstations, monitor walls and infrastructure – always absolutely safe and excellent in stressful situations.

More about myGUI[®]



MultiConsoling® – The Control centre control room

MultiConsoling® is the high-availability control centre for connecting all of the signals from your systems to the monitors at the operator's workstation and on the monitor walls. Transmission takes place in real time and does not require any software on your computers.

[More about MultiConsoling®](#)



Control room furniture: ergonomic operator consoles, Recaro operator's chair, AllMedia Conference System

You can get furniture and technology from a single source at JST. The highly stable Stratos operator consoles, with height adjustment and suitable surrounding furniture, form an ergonomic base for your control room.

[More about control room furniture](#)



Large-screen control system with graphic controller

With the IP-based graphic controller you can get your monitor wall going. The graphic controller records all video signals over the IP network simultaneously and spreads them out at any position and in any scale on the large display wall.

[More about graphic controllers](#)



PixelDetection® – the operator's eye

Shorten your reaction times! With PixelDetection®, you will receive the right alarm at exactly the right moment and always be able to see an overview. Proven for many years and repeatedly awarded, PixelDetection® is also known as the “artificial eye of the operator”.

[More about PixelDetection®](#)



JST myLogin[®] – the operator's login

JST myLogin[®] is a revolutionary solution for logging on and off centrally and quickly from all operator workstations with your company ID. The login/logout process only takes a few moments. If you want, you can also save your personal layout of the screen contents.

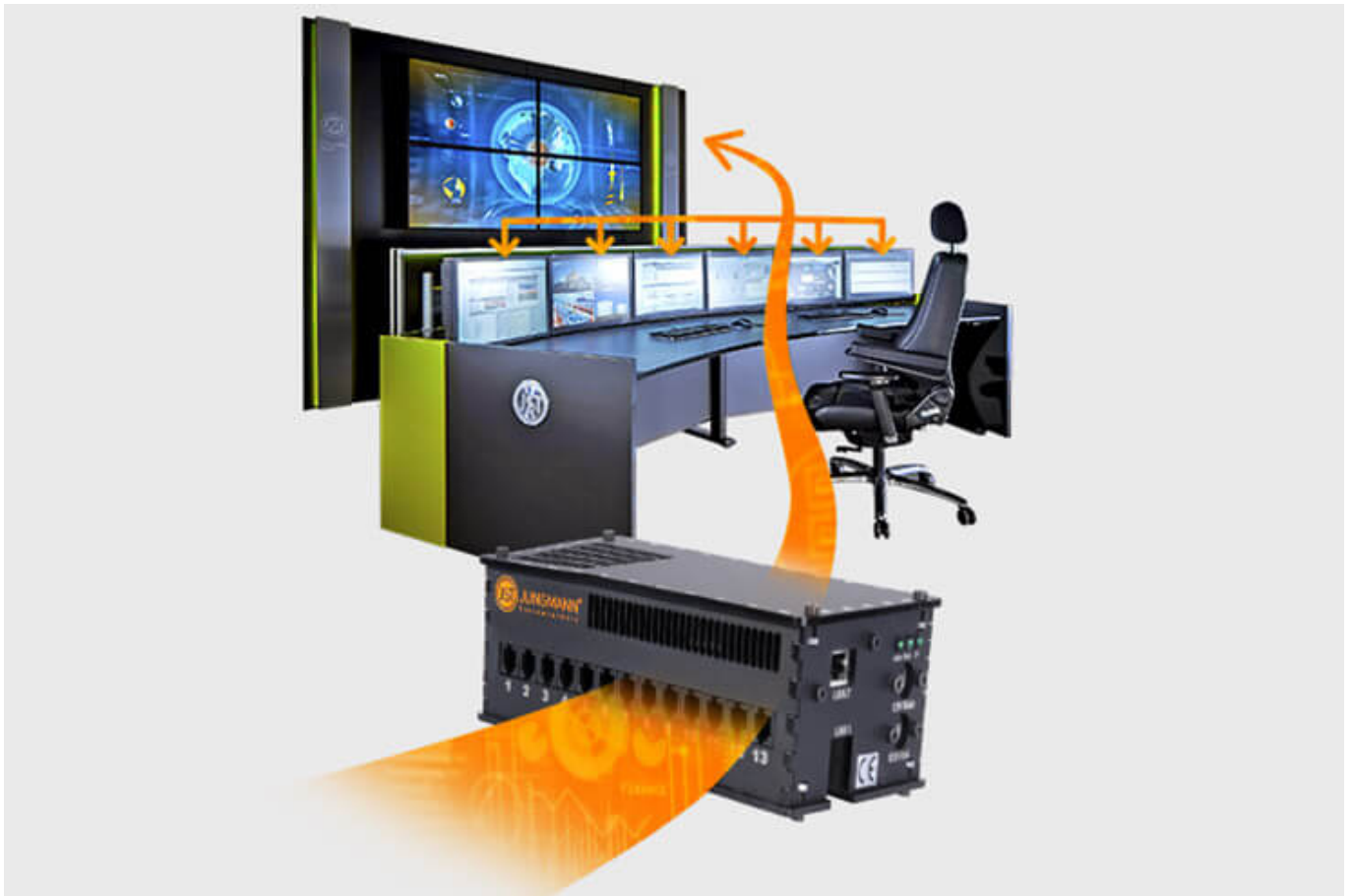
[More about myLogin[®]](#)



CockpitView – the operator’s dashboard

Create dashboards with content from different computers on different networks! CockpitView offers you the perfect overview of your most important applications at a glance. With CockpitView you can stay in control and reduce monitors at the workplace or even the large-format system.

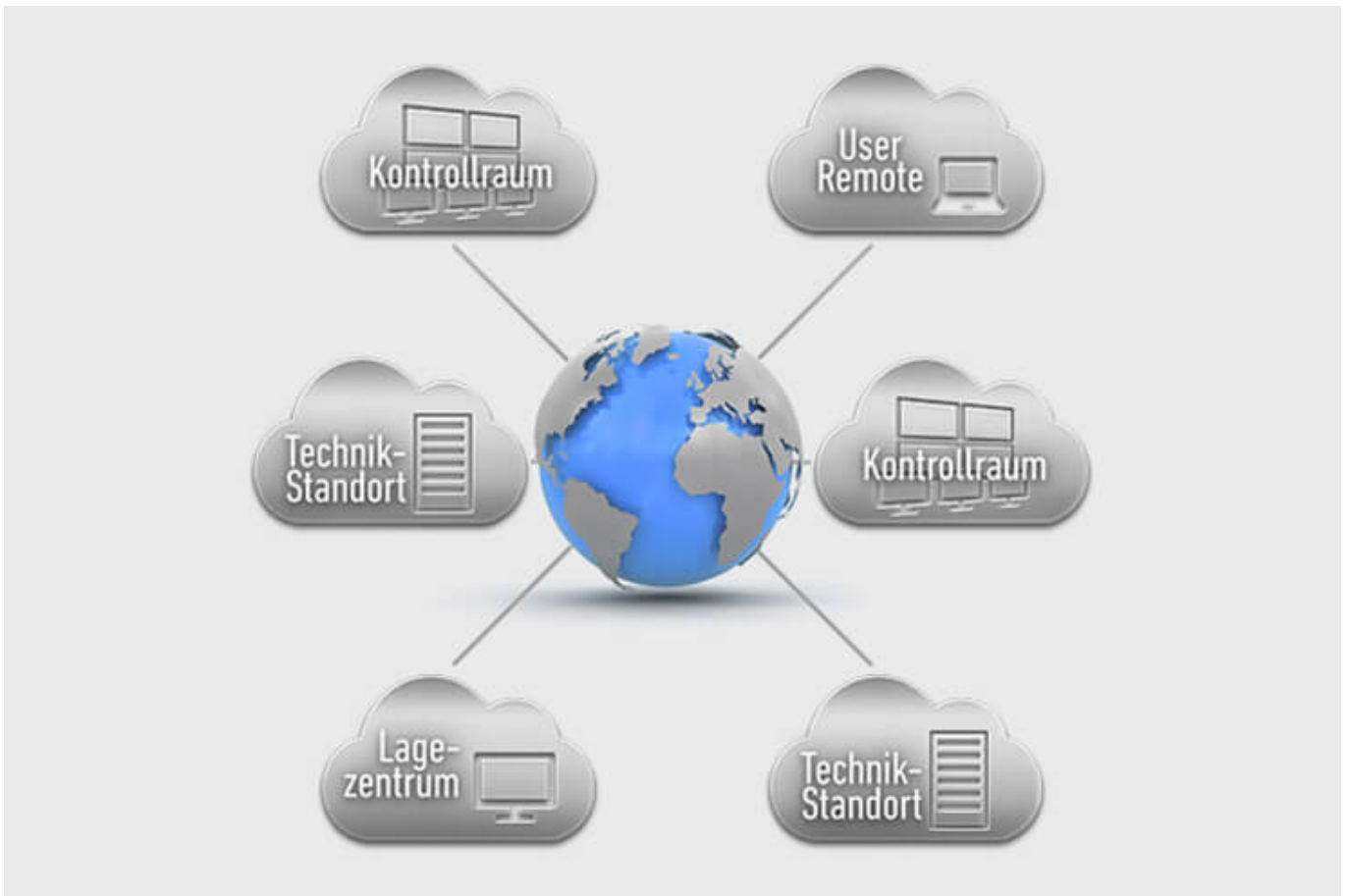
[More about CockpitView](#)



Automation for Videowalls and operator workstations

With the JST CommandBox, you can monitor circuits, relays, audio signals, and much more, and have them automatically switched on at defined workstations or on the monitor wall when critical values are detected. The range of applications is almost unlimited!

[More about ControlRoom Automation](#)



ControlRoom Remote: Connection of distributed systems and locations

The optional remote interface of JST Systems allows you to visualise and operate remote computers and entire control rooms. Even complex emergency scenarios for backup control rooms are feasible!

[More about ControlRoom Remote](#)



Computer relocation and PC remote control

By relocating computers from the control room to the technical room, you can reduce the thermal load and create more legroom for your employees. Additional advantages are the central administration of the computers as well as the physical access protection in the secured technical room.

[More about computer relocation](#)



Optional service and maintenance packages

To ensure that your control room stays as available as you need it to be, we offer preventative maintenance packages in various scopes and forms. You will receive customised solutions that will support your market and competitive success.

[More about service from JST](#)

Was möchten Sie als Nächstes tun?

Ich möchte

- [das kostenfreie Praxisbuch der Kontrollräume anfordern](#)
- [einen Rückruf für eine unverbindliche Beratung](#)
- [den Kontrollraum-Simulator in Buxtehude besuchen](#)
- [eine digitale 360°-Tour in einem Kontrollraum erleben](#)

- [mehr über Kontrollräume auf dem ko:mon Kongress erfahren](#)

We are happy to answer your questions regarding control room planning

0800-777 8 666

You are currently viewing a placeholder content from **YouTube**. To access the actual content, click the button below. Please note that doing so will share data with third-party providers.

[More Information](#)

[Unblock content](#) [Accept required service and unblock content](#)