

## Expand your measuring station with JST – Your investment will pay off quickly

Regardless of whether you want to expand individual areas of your measuring station or are considering a complete reconstruction: JST's **planning know-how** for measuring station expansion is state-of-the-art. You decide whether we should make comprehensive changes or take action in subareas of the existing measuring station.

JST is known throughout Germany for its carefully **thought-out solutions for expanding measuring station**. We skilfully assemble the **optimal components** for your needs. Our ergonomic control room furniture provides support for the operator during their shift. At the same time, we focus on creating an appealing visual design: We are happy to build our surrounding furniture to match your corporate design.

**OFFER EXPAND MEASURING STATION**





- We will coordinate our plans for expanding the measuring station on an individual basis.
- We will make your measuring station fit for the future.
- The expanded measuring station takes ergonomics and comfort into account.
  
- We are happy to adapt new surrounding furniture to your CI.
- No changes to the hardware/software of your systems necessary!



WindMW

SAG

NOTUS  
OPERATIONS

DEUTSCHE  
WINDTECHNIK

Adwen  
AN AREVA GAMESA COMPANY

DREWAG

## Practical examples: Measuring station expansion

Industrial measuring stations must be able to meet the highest demands. Anyone working in 24/7 continuous operation knows about the demanding tasks that employees face around the clock. Here it is not only important to meet the special safety requirements with an optimally designed measuring station, but to guarantee them 100%. No compromises. We will analyse, plan and implement the **appropriate overall concept of reliable solutions** down to the smallest detail. This is exactly what our passion is! Take a look at our reference projects to get an idea of what we do for measuring stations across a wide range of industries.

**We will be happy to put you in touch with the appropriate contact person.**

### Expanded measuring station for PCK refinery

PCK Raffinerie GmbH in Schwedt/Oder is one of the top companies in Brandenburg and the most important company in the Uckermark. Around 12 million tonnes of crude oil are processed into petroleum and petrochemical products in Schwedt every year. The main products are diesel, petrol, kerosene, liquefied petroleum gas, heating oils and bitumen. PCK was one of the first refineries in Germany to use biofuels and is itself a major producer of high-quality biofuel components.

**GO TO PROJECT**



*"Compared to the satellite measuring stations and also to the old central measuring station, we have been able to improve in every aspect, be it acoustics, lighting, air conditioning, ergonomics or user-friendliness".*

**Eric Sieger, Thomas Taube, Carsten Jungmann (from left to right)**

Chief Divisional Engineer for Processing (PCK) / Divisional Engineer for Maintenance Service and Project Coordinator (PCK) / Managing Director (JST)



## Chemical control room: highest availability

With 2,200 employees in four business divisions, INEOS in Cologne is one of the largest locations of the INEOS Group. These business units also include INEOS Oxide, Europe's largest producer of ethylene glycol. The production of this basic chemical as a starting material for various end products – from antifreeze to polyester fibers – is monitored in a modern control room that Jungmann Systemtechnik (JST) designed and installed for the chemical company.

**GO TO PROJECT**



**INEOS**  
THE WORD FOR CHEMICALS

*"The colleagues are impressed by the progress we've made here."*

**Volker Weimer (left) / Stefan Johannsen / Christoph Mock / Waldemar Seibel**

Consultant (JST) / Technician PLT (INEOS) / Technician PLT (INEOS) / Production Engineer  
PLT (INEOS)



## **BASF control room paves the way to sustainable value creation**

Using renewable energies for production on an industrial scale is one of the declared goals of BASF Schwarzheide GmbH. With a new Jungmann control room for monitoring and controlling the gas and steam turbine power plant at the Schwarzheide site, the necessary preconditions for this have been created. The state-of-the-art control room serves as the basis for a more flexible operating regime and complete monitoring of processes. It was not only the effortless handling and the comprehensive operating options of the MultiConsoling® technology that convinced the project managers. Ergonomics and design also played a decisive role.

**GO TO PROJECT**



*„High flexibility, reliable performance, no more annoying chair moving - that was already a great experience!“*

**Vitali Goldnik (left) // Oliver Bender**

E&I Engineering BASF SE // Consultant JST





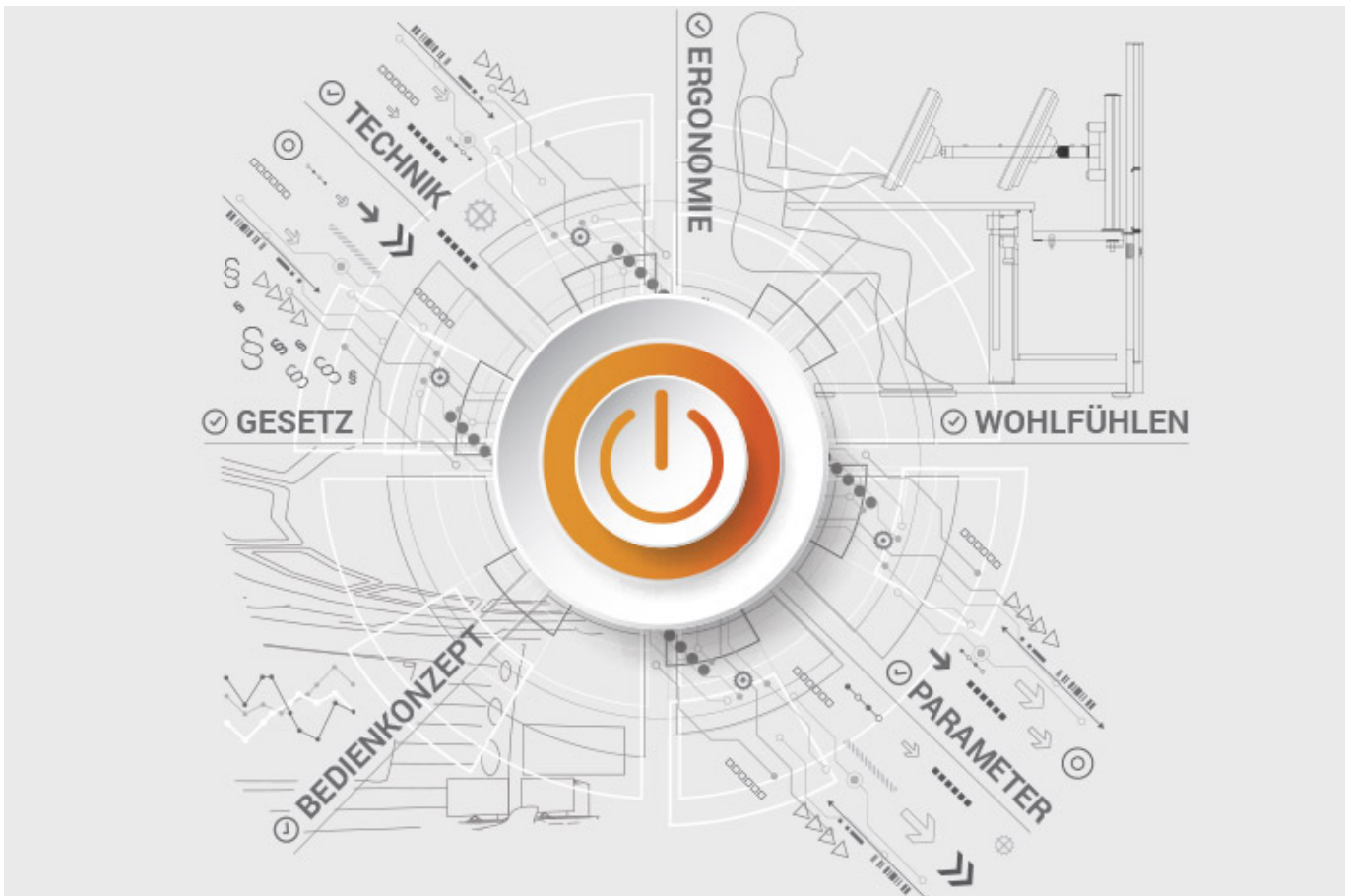
## ALL PROJECTS

### Documents for download

- [Project report on the new central control room of Infraleuna \(PDF\)](#)

**JST product overview: Think of everything!**

**Expand measuring stations with the following components**



## Analysis and planning of your control room

Are you planning changes in your control room? Or would you like to breathe some fresh air into your control room? Then make use of the proven planning packages or the free online analysis from JST. Our experts will support you in accordance with BAUA: Study and all important standards and guidelines.

More about the free analysis



## **Large-display technology – react faster!**

Proactively present important information to the right people – before an incident can have a major impact. With scalable large display walls based on LCD displays and Cube technology, we are sure to find the right large-format system for your 24/7 operation!

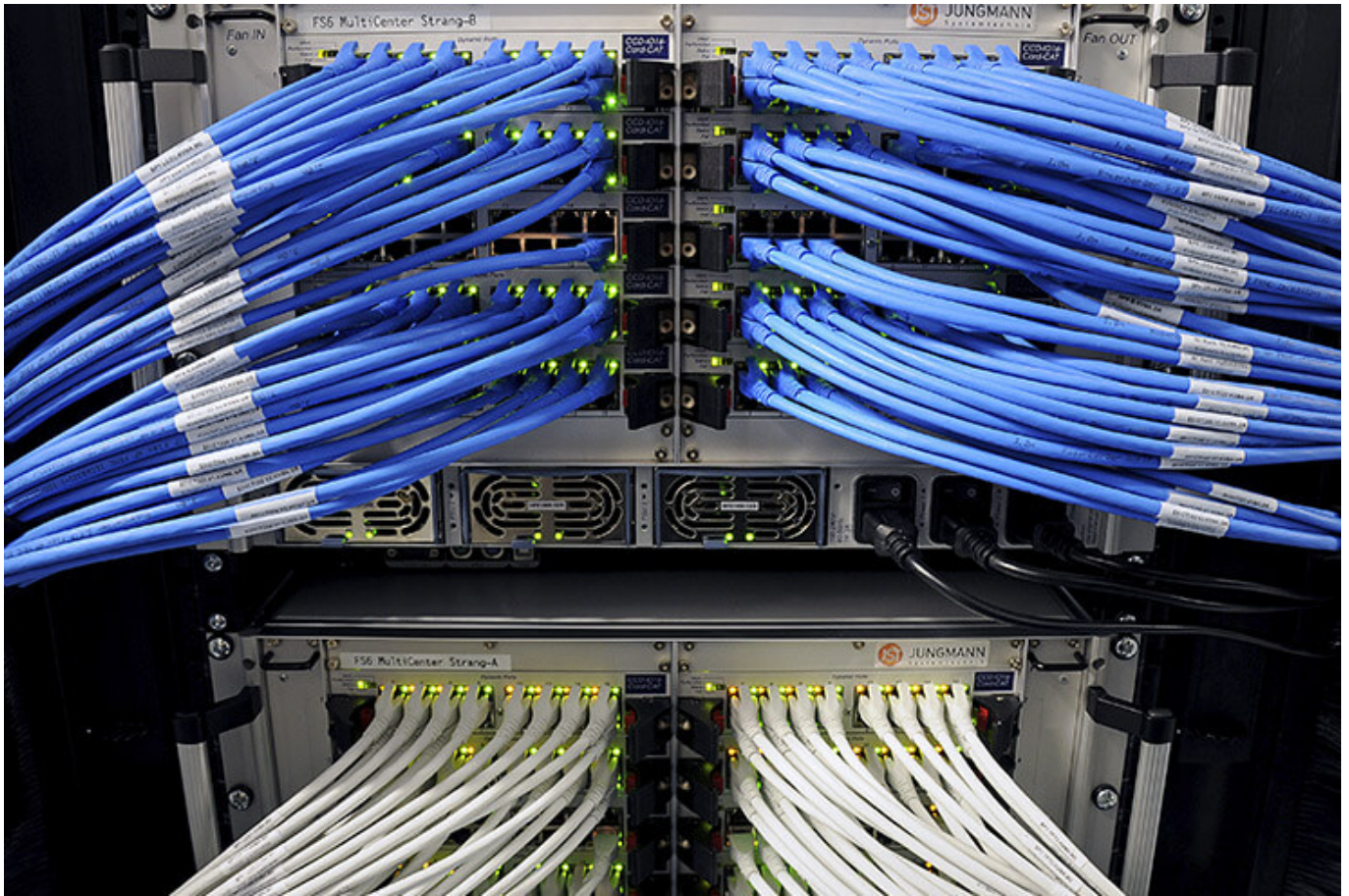
More about JST large-display technology



## **myGUI® – User interface for large-format system, workplace & infrastructure**

The intuitive myGUI® user interface in the 3D layout of your control room offers maximum operating convenience for your MultiConsoling® system. With just one click you can operate workstations, monitor walls and infrastructure – always absolutely safe and excellent in stressful situations.

[More about myGUI®](#)



## **MultiConsoling® – The Control center control room**

MultiConsoling® is the high-availability control center for connecting all of the signals from your systems to the monitors at the operator's workstation and on the monitor walls. Transmission takes place in real time and does not require any software on your computers.

[More about MultiConsoling®](#)



**Control room furniture: ergonomic operator consoles, Recaro operator's chair, AllMedia Conference System**

You can get furniture and technology from a single source at JST. The highly stable Stratos operator consoles, with height adjustment and suitable surrounding furniture, form an ergonomic base for your control room.

[More about control room furniture](#)



## Large-screen control system with graphic controller

With the IP-based graphic controller you can get your monitor wall going. The graphic controller records all video signals over the IP network simultaneously and spreads them out at any position and in any scale on the large display wall.

[More about graphic controllers](#)



## PixelDetection® – the operator's eye

Shorten your reaction times! With PixelDetection®, you will receive the right alarm at exactly the right moment and always be able to see an overview. Proven for many years and repeatedly awarded, PixelDetection® is also known as the “artificial eye of the operator”.

[More about PixelDetection®](#)





## **JST myLogin<sup>®</sup> – the operator's login**

JST myLogin<sup>®</sup> is a revolutionary solution for logging on and off centrally and quickly from all operator workstations with your company ID. The login/logout process only takes a few moments. If you want, you can also save your personal layout of the screen contents.

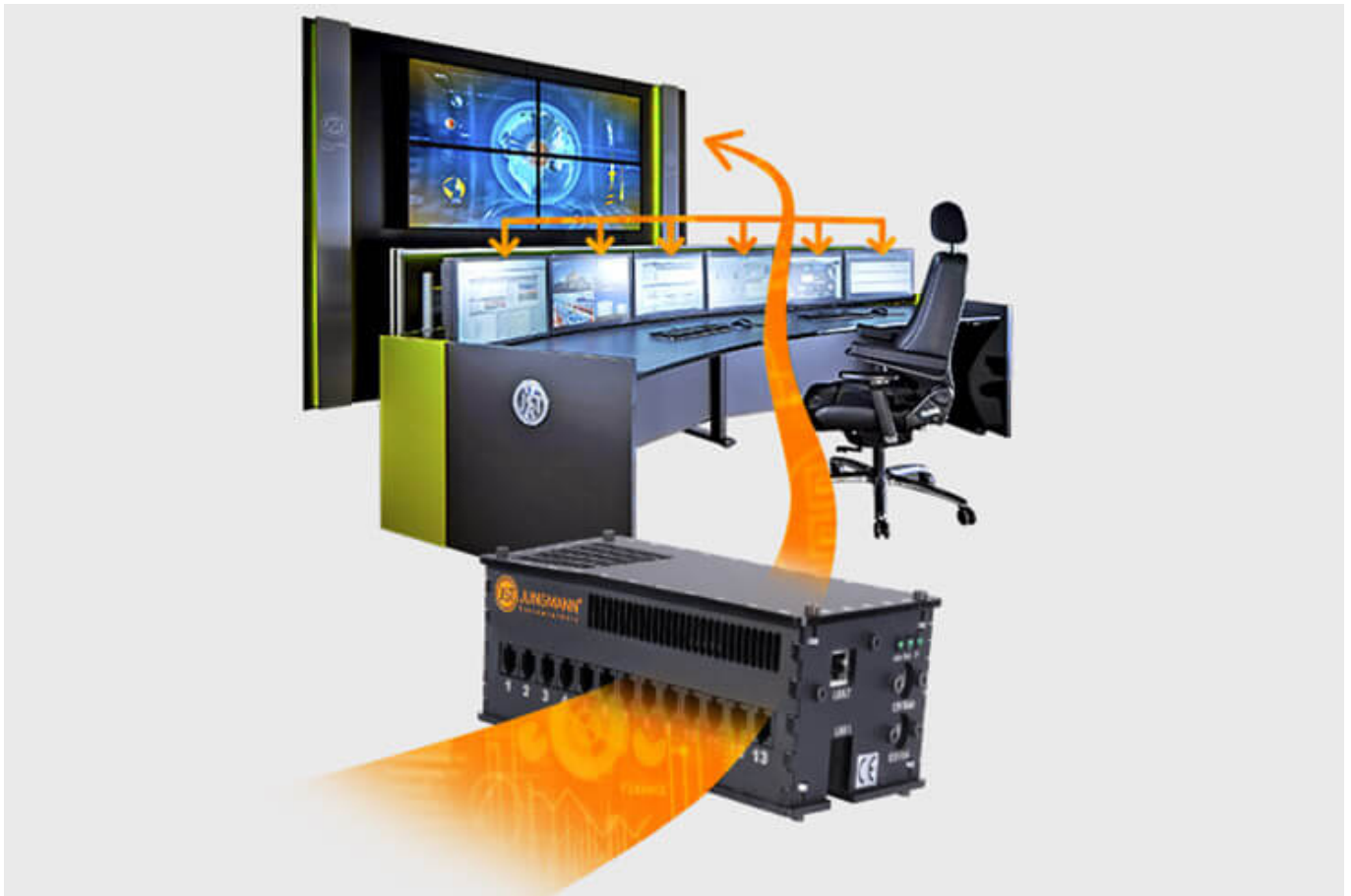
[More about myLogin<sup>®</sup>](#)



## CockpitView – the operator’s dashboard

Create dashboards with content from different computers on different networks! CockpitView offers you the perfect overview of your most important applications at a glance. With CockpitView you can stay in control and reduce monitors at the workplace or even the large-format system.

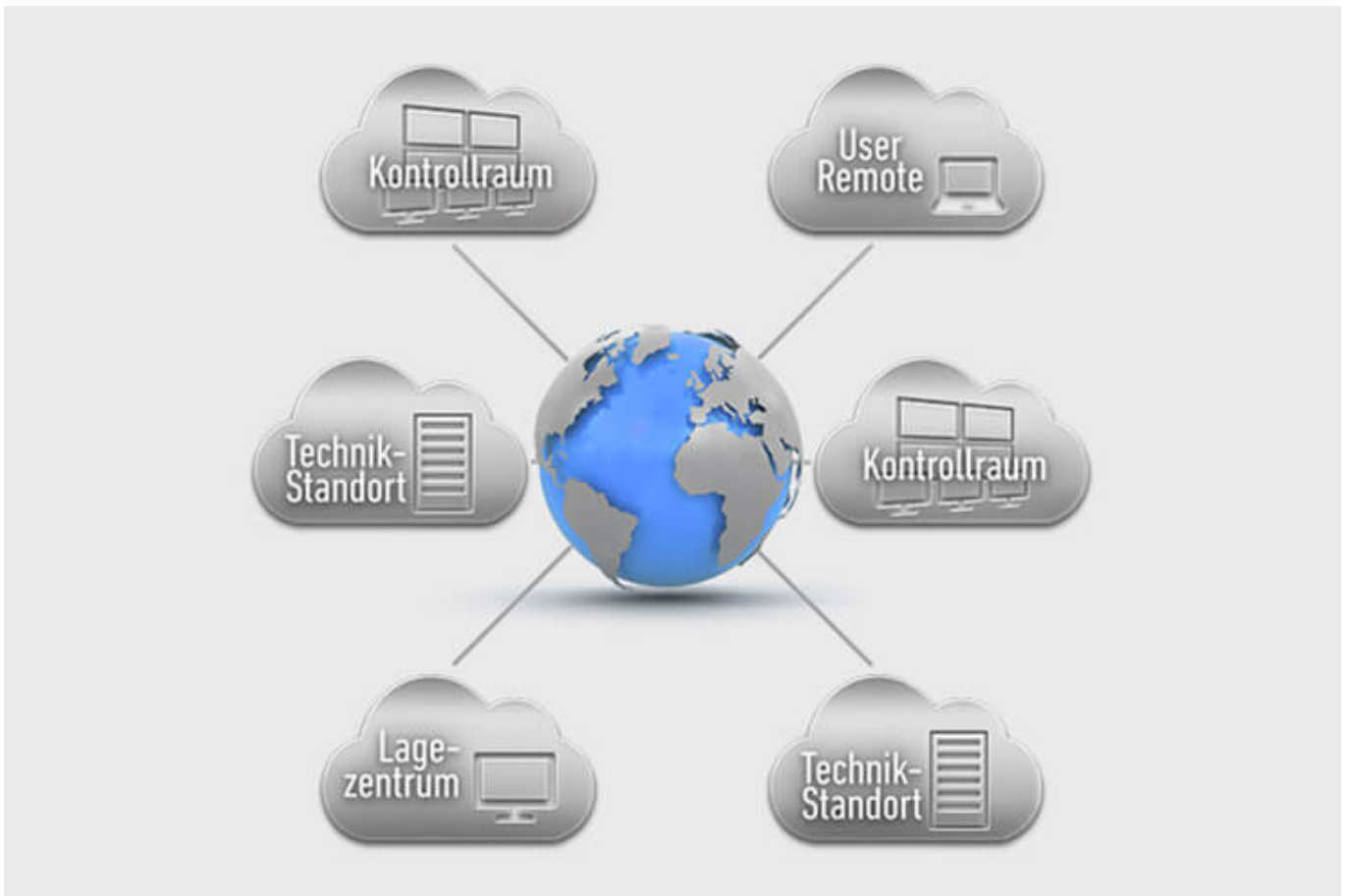
[More about CockpitView](#)



## Automation for Videowalls and operator workstations

With the JST CommandBox, you can monitor circuits, relays, audio signals, and much more, and have them automatically switched on at defined workstations or on the monitor wall when critical values are detected. The range of applications is almost unlimited!

[More about ControlRoom Automation](#)



## **ControlRoom Remote: Connection of distributed systems and locations**

The optional remote interface of JST Systems allows you to visualise and operate remote computers and entire control rooms. Even complex emergency scenarios for backup control rooms are feasible!

[More about ControlRoom Remote](#)



## **Computer relocation and PC remote control**

By relocating computers from the control room to the technical room, you can reduce the thermal load and create more legroom for your employees. Additional advantages are the central administration of the computers as well as the physical access protection in the secured technical room.

[More about computer relocation](#)



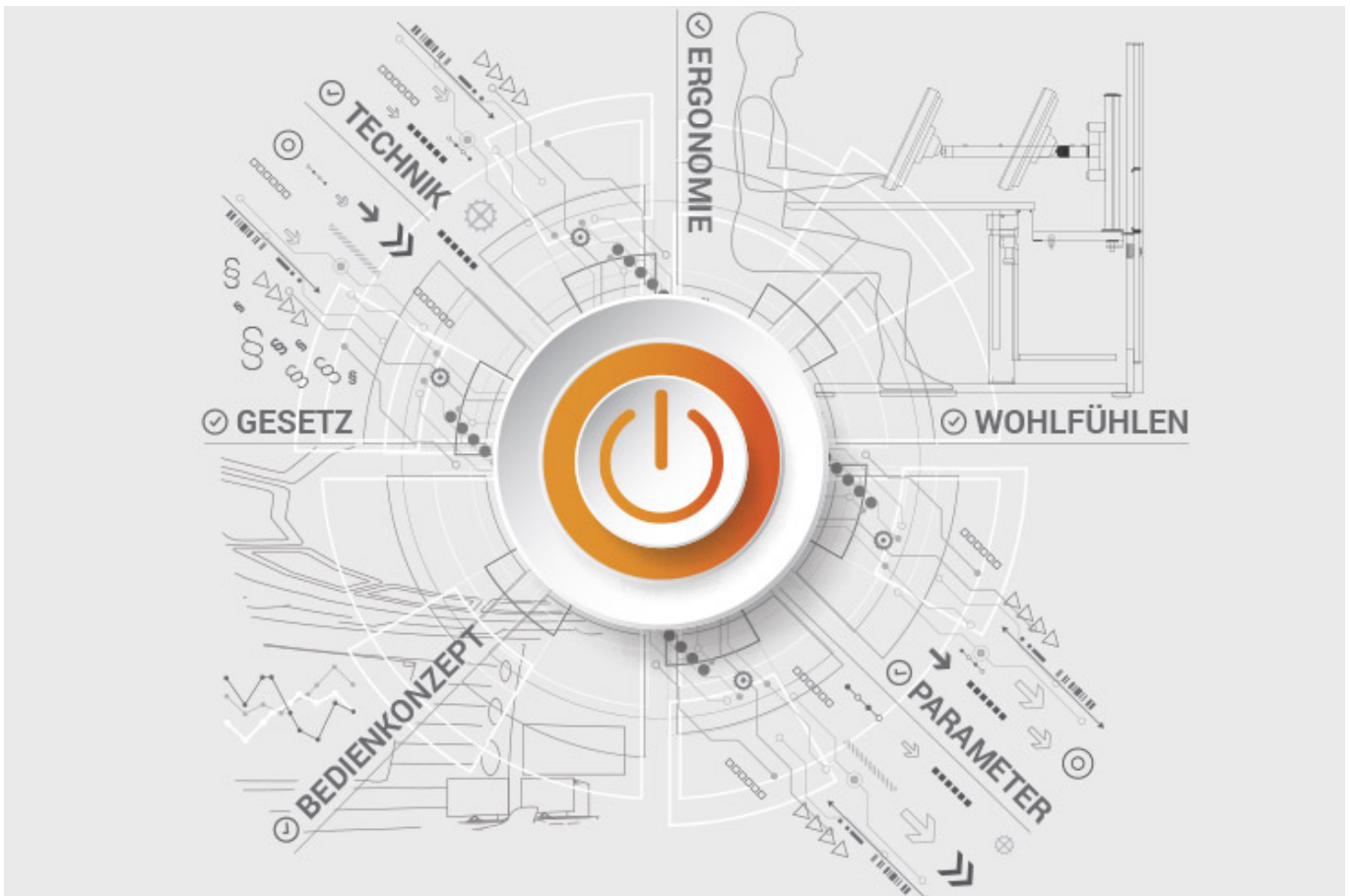
### Optional service and maintenance packages

To ensure that your control room stays as available as you need it to be, we offer preventative maintenance packages in various scopes and forms. You will receive customised solutions that will support your market and competitive success.

[More about service from JST](#)

## JST product overview: Think of everything!

### Expand measuring stations with the following components



## Analysis and planning of your control room

Are you planning changes in your control room? Or would you like to breathe some fresh air into your control room? Then make use of the proven [planning packages](#) or the free [online analysis](#) from JST. Our experts will support you in accordance with [BAUA: Study](#) and all important standards and guidelines.

[More about the free analysis](#)



## **Large-display technology – react faster!**

Proactively present important information to the right people – before an incident can have a major impact. With scalable large display walls based on LCD displays and Cube technology, we are sure to find the right large-format system for your 24/7 operation!

More about JST large-display technology

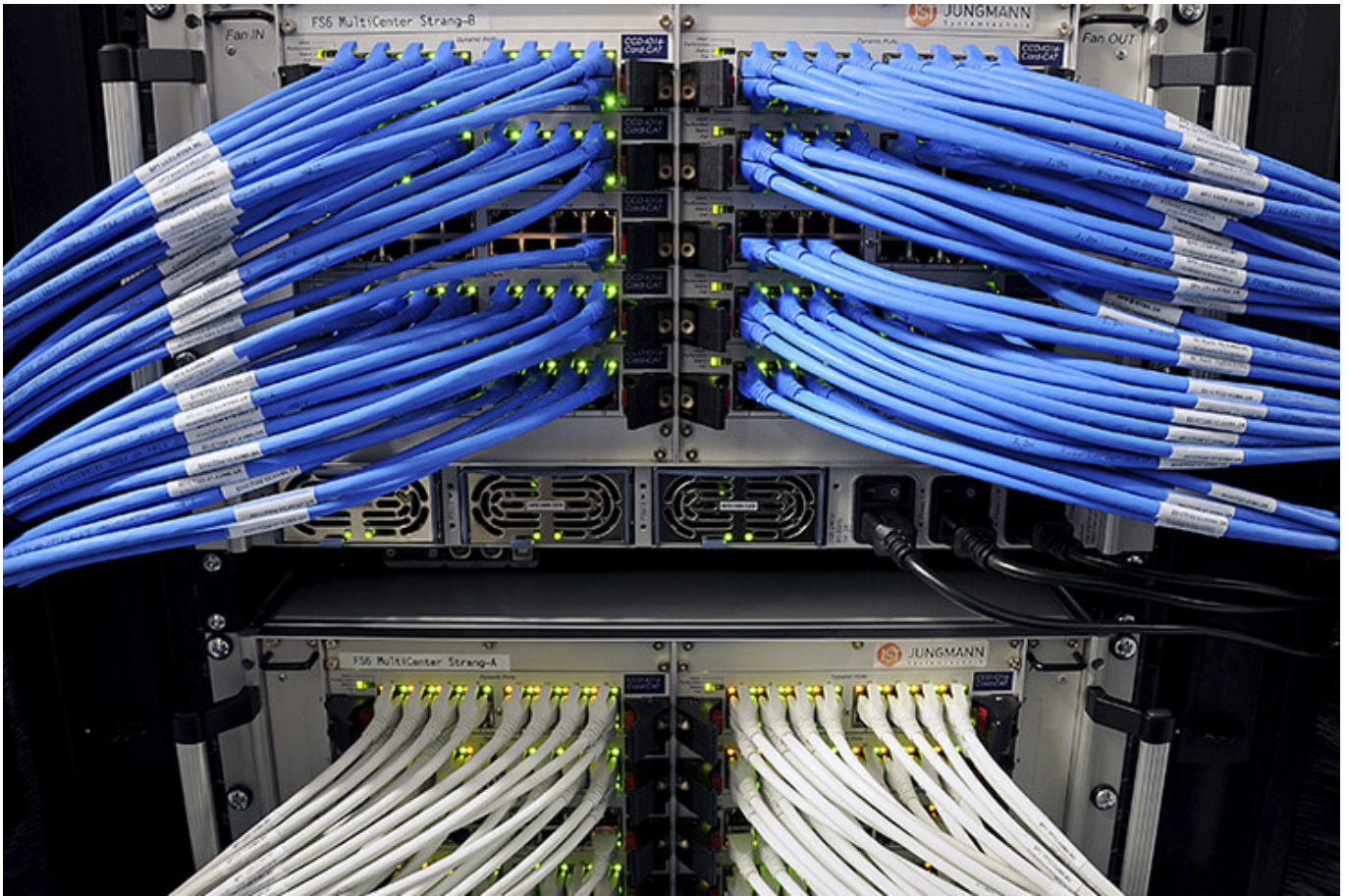




## **myGUI® – User interface for large-format system, workplace & infrastructure**

The intuitive myGUI® user interface in the 3D layout of your control room offers maximum operating convenience for your MultiConsoling® system. With just one click you can operate workstations, monitor walls and infrastructure – always absolutely safe and excellent in stressful situations.

[More about myGUI®](#)



## **MultiConsoling® – The Control center control room**

MultiConsoling® is the high-availability control center for connecting all of the signals from your systems to the monitors at the operator's workstation and on the monitor walls. Transmission takes place in real time and does not require any software on your computers.

[More about MultiConsoling®](#)



**Control room furniture: ergonomic operator consoles, Recaro operator's chair, AllMedia Conference System**

You can get furniture and technology from a single source at JST. The highly stable Stratos operator consoles, with height adjustment and suitable surrounding furniture, form an ergonomic base for your control room.

[More about control room furniture](#)



## Large-screen control system with graphic controller

With the IP-based graphic controller you can get your monitor wall going. The graphic controller records all video signals over the IP network simultaneously and spreads them out at any position and in any scale on the large display wall.

[More about graphic controllers](#)



## PixelDetection® – the operator's eye

Shorten your reaction times! With PixelDetection®, you will receive the right alarm at exactly the right moment and always be able to see an overview. Proven for many years and repeatedly awarded, PixelDetection® is also known as the “artificial eye of the operator”.

[More about PixelDetection®](#)



## **JST myLogin<sup>®</sup> – the operator's login**

JST myLogin<sup>®</sup> is a revolutionary solution for logging on and off centrally and quickly from all operator workstations with your company ID. The login/logout process only takes a few moments. If you want, you can also save your personal layout of the screen contents.

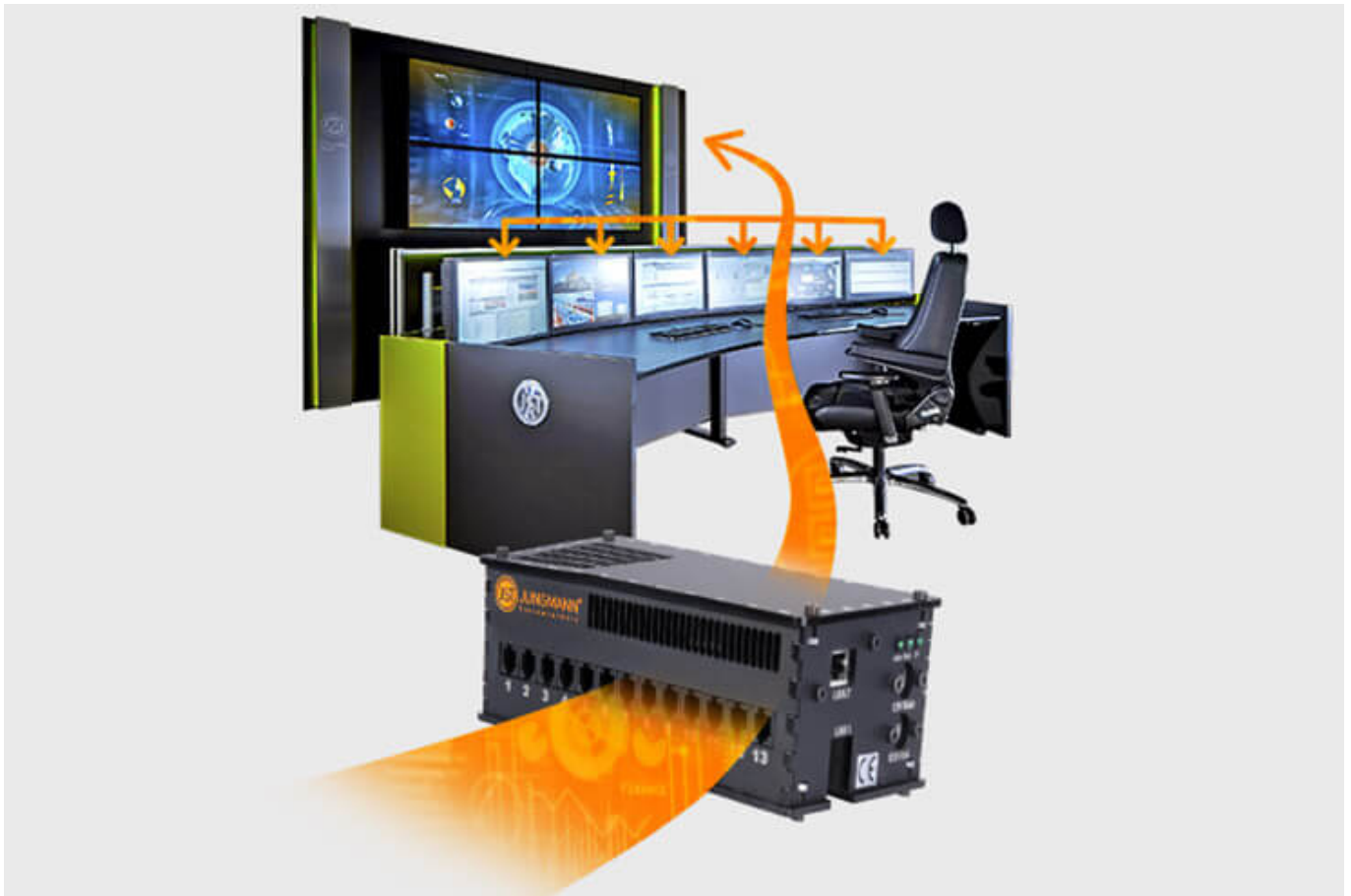
[More about myLogin<sup>®</sup>](#)



## CockpitView – the operator’s dashboard

Create dashboards with content from different computers on different networks! CockpitView offers you the perfect overview of your most important applications at a glance. With CockpitView you can stay in control and reduce monitors at the workplace or even the large-format system.

[More about CockpitView](#)

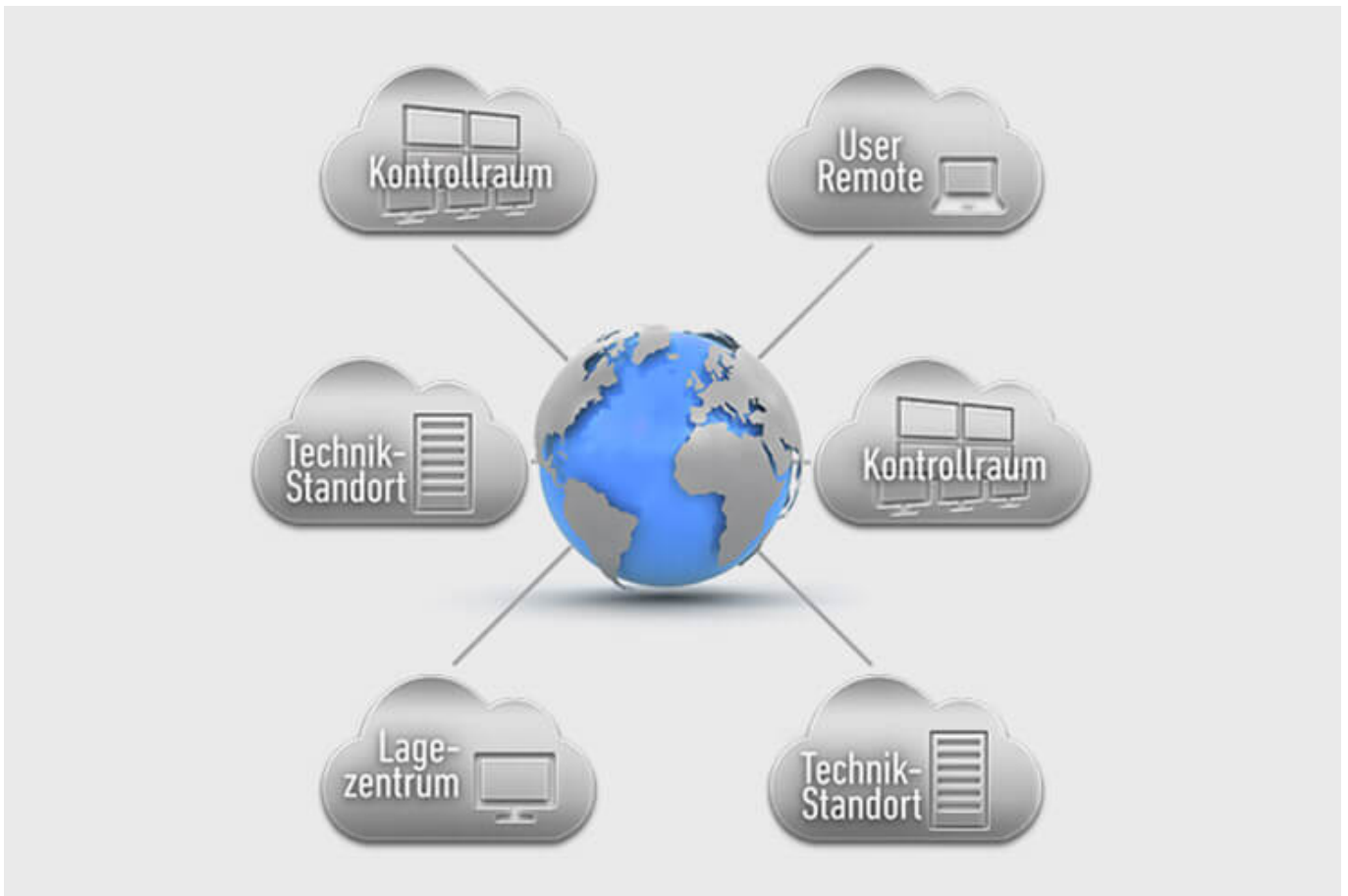


## Automation for Videowalls and operator workstations

With the JST CommandBox, you can monitor circuits, relays, audio signals, and much more, and have them automatically switched on at defined workstations or on the monitor wall when critical values are detected. The range of applications is almost unlimited!

[More about ControlRoom Automation](#)





## **ControlRoom Remote: Connection of distributed systems and locations**

The optional remote interface of JST Systems allows you to visualise and operate remote computers and entire control rooms. Even complex emergency scenarios for backup control rooms are feasible!

[More about ControlRoom Remote](#)



## **Computer relocation and PC remote control**

By relocating computers from the control room to the technical room, you can reduce the thermal load and create more legroom for your employees. Additional advantages are the central administration of the computers as well as the physical access protection in the secured technical room.

[More about computer relocation](#)



### Optional service and maintenance packages

To ensure that your control room stays as available as you need it to be, we offer preventative maintenance packages in various scopes and forms. You will receive customised solutions that will support your market and competitive success.

[More about service from JST](#)

### Was möchten Sie als Nächstes tun?

Ich möchte

- [das kostenfreie Praxisbuch der Kontrollräume anfordern](#)
- [einen Rückruf für eine unverbindliche Beratung](#)
- [den Kontrollraum-Simulator in Buxtehude besuchen](#)
- [eine digitale 360°-Tour in einem Kontrollraum erleben](#)

- [mehr über Kontrollräume auf dem ko:mon Kongress erfahren](#)

We are happy to answer your questions on the expansion of measuring stations

**0800-777 8 666**

---

You are currently viewing a placeholder content from **YouTube**. To access the actual content, click the button below. Please note that doing so will share data with third-party providers.

[More Information](#)

[Unblock content](#) [Accept required service and unblock content](#)