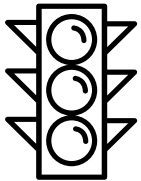


## The emergency control center - the central heart of emergency call reception for the police, fire brigade and ambulance service

Anyone who dials an emergency number will end up at the nearest emergency control center of the police, fire brigade or ambulance service. This is where residents can receive rapid assistance around the clock in emergency situations. Specially trained employees work in emergency control centers. **Safety and proper functioning of the systems** is the top priority here. Monitor walls, ergonomic control room furniture and our MultiConsoling control system make work much easier for everyone involved. **Professional software tools**, such as PixelDetection®, make workflows **highly efficient**. We are happy to advise you at the **highest standard** personally and also have **proven solutions** for optimising or redesigning your emergency control center.

**OFFER SET UP EMERGENCY CONTROL CENTER**



Hamburg Police Headquarters

- Planning emergency control centers with architecture, technology, light, acoustics, climate planning
- MultiConsoling® as a real-time control center for 24/7 operation
- Fewer keyboards and mice on the operator desks
  
- Ergonomic control room furniture "Made in Germany"
- Coherent spatial planning for ideal workflow between all employees



## Practical examples: Emergency control center setup

In **emergency control centers**, **quick reactions from employees** are absolutely essential. When an emergency call comes in, all the details of the person seeking help are recorded directly and entered into the system. The computer verifies the plausibility of the details and supports the officers in evaluating the necessary deployment. In order to dependably guarantee the **reliability of the input systems** and **direct operation**, it is usually necessary to optimise or reinstall the outdated control center for emergencies. We place a special focus on this. Our systems stand for **reliability and availability**. Also, or especially, in **24/7 operation**. Feel free to have a look at our [references](#). Whether for police, fire brigade or ambulance service – perhaps you will find a project that closely matches your requirements!

**We will be happy to put you in touch with the appropriate contact person.**

### New traffic control center is the core of the metro system

“We have proven that Berlin construction projects can be completed on time and without increasing costs,” says Antje Michalak, responsible for the “Control Centers 2014+” project of

Berliner Verkehrsbetriebe, which includes the new operations control center for the underground railway (BLU). Jungmann Systemtechnik also contributed to this new building project with a total budget of 8.9 million euros. 170 employees control the train traffic around the clock from the core of the metro system in Lichtenberg.

**GO TO PROJECT**



*"We've built a perfect control center here."*

**Lars Kramer (left) / Antje Michalak / Matthias Borgwald (right)**

Sub-Project Manager IT Engineering / General Project Manager / Sub-Network Manager



## Modernisation of traffic control center at Hamburg Police Headquarters

Greater safety on Hamburg's roads and better traffic flow on the routes of the Hanseatic city – two declared goals that will be achieved with the new, ultra-modern traffic control center at the police headquarters in Alsterdorf. The technical prerequisites were met thanks to the professional support of the general contractor SWARCO TRAFFIC SYSTEMS GmbH and Jungmann Systemtechnik – acting as subcontractor of SWARCO.

**GO TO PROJECT**



## Polizeipräsidium Hamburg

*Thanks to state-of-the-art technology, he is able to join his colleagues on virtual patrols of the Hanseatic City of Hamburg via the Cube large display wall:*

**Jürgen Otten**

Police Commissioner



## JST creates "technical luxury class" with Fleet Operations Center

Discover a new world every day, new people, new countries and in between always find time to relax on board a cruise ship. To make holiday dreams come true on the ships of the AIDA and Costa fleet, a highly qualified team of nautical experts watches over the 25 ships of the Costa Group in the background. A Marine Operations Unit with a central Fleet Operations Center (FOC) was created in Hamburg under the name "Carnival Maritime." Jungmann Systemtechnik provided support in setting up the FOC.

**GO TO PROJECT**



*"We needed someone who really knew their way around, was well versed in the field and was able to implement our project within a very short time. We also liked the design."*

**Michael Salzmann**

Senior Superintendent of the FOC



## ALL PROJECTS

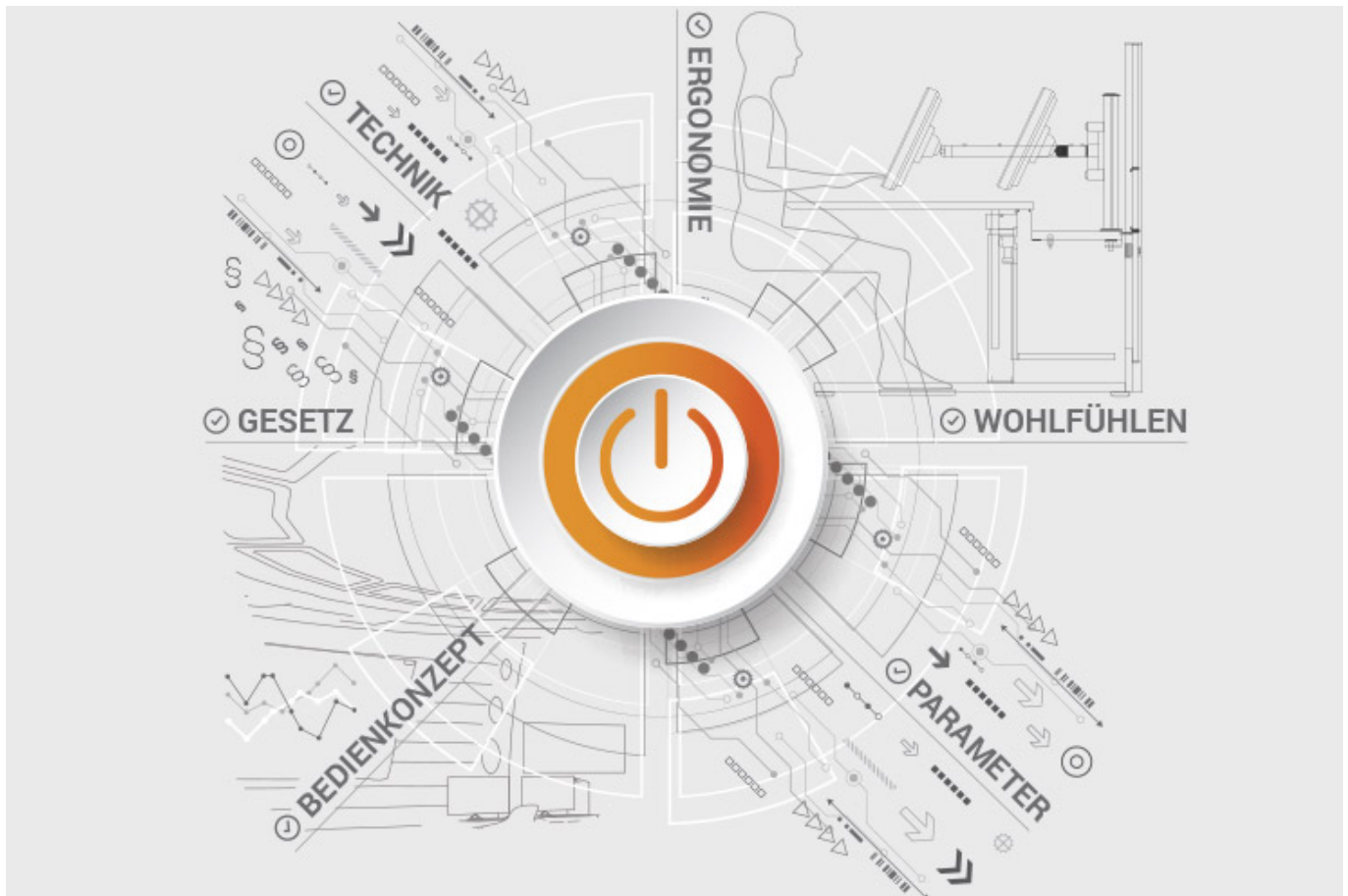
### Documents for download

- [Project report of the new traffic control room of BVG Berlin \(PDF\)](#)
- [Project report on the new central control room of Infraleuna \(PDF\)](#)

**JST product overview: Think of everything!**



## Set up an emergency control center with the appropriate components



### Analysis and planning of your control room

Are you planning changes in your control room? Or would you like to breathe some fresh air into your control room? Then make use of the proven planning packages or the free online analysis from JST. Our experts will support you in accordance with BAUA: Study and all important standards and guidelines.

[More about the free analysis](#)



## **Large-display technology – react faster!**

Proactively present important information to the right people – before an incident can have a major impact. With scalable large display walls based on LCD displays and Cube technology, we are sure to find the right large-format system for your 24/7 operation!

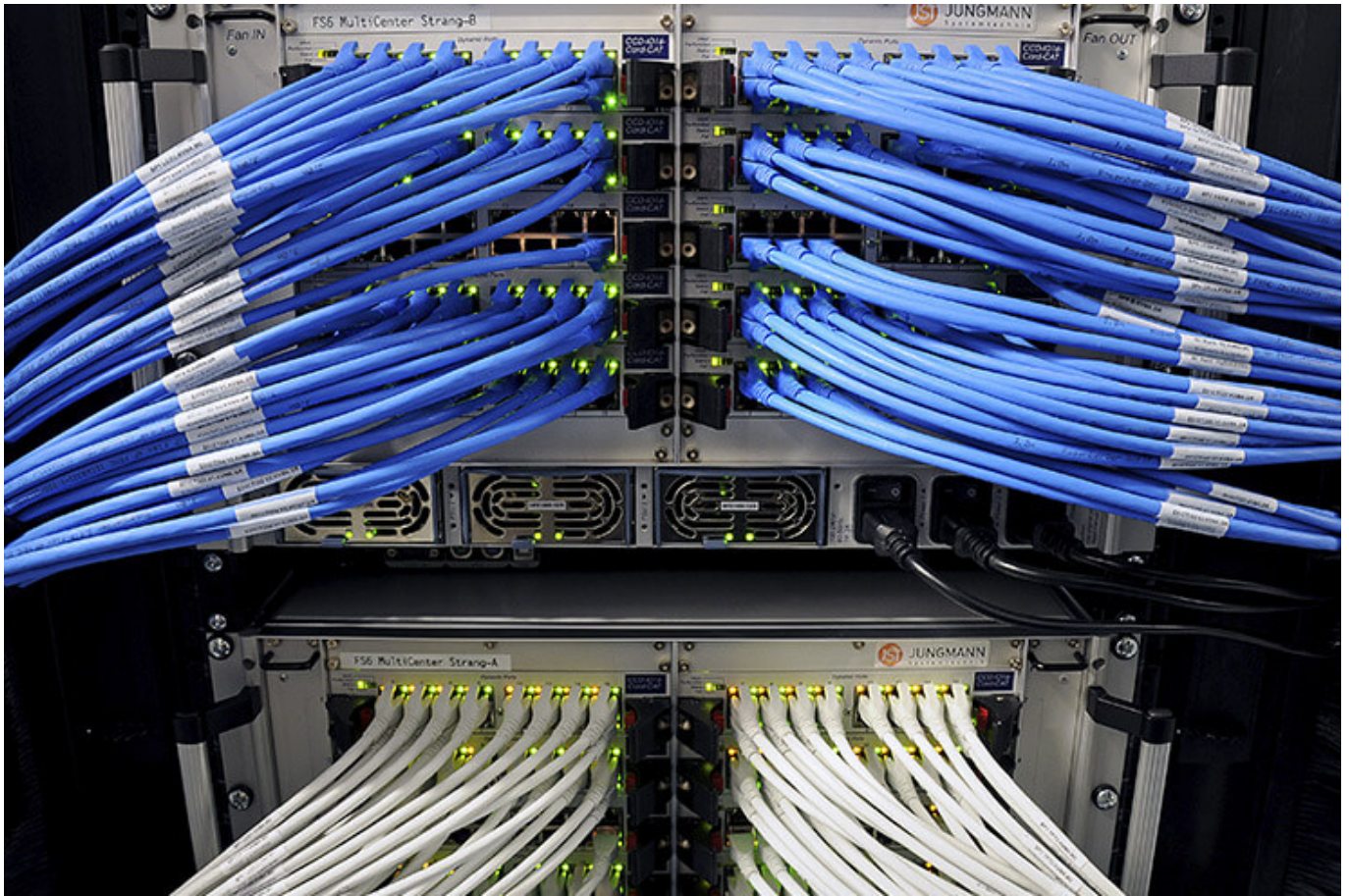
More about JST large-display technology



## **myGUI® – User interface for large-format system, workplace & infrastructure**

The intuitive myGUI® user interface in the 3D layout of your control room offers maximum operating convenience for your MultiConsoling® system. With just one click you can operate workstations, monitor walls and infrastructure – always absolutely safe and excellent in stressful situations.

More about myGUI<sup>®</sup>



## **MultiConsoling® – the command center of the control room**

MultiConsoling® is the high-availability control center for connecting all of the signals from your systems to the monitors at the operator's workstation and on the monitor walls. Transmission takes place in real time and does not require any software on your computers.

[More about MultiConsoling®](#)



**Control room furniture: ergonomic operator consoles, Recaro operator's chair, AllMedia Conference System**

You can get furniture and technology from a single source at JST. The highly stable Stratos operator consoles, with height adjustment and suitable surrounding furniture, form an ergonomic base for your control room.

[More about control room furniture](#)



## Large-screen control system with graphic controller

With the IP-based graphic controller you can get your monitor wall going. The graphic controller records all video signals over the IP network simultaneously and spreads them out at any position and in any scale on the large display wall.

[More about graphic controllers](#)



## PixelDetection® – the operator's eye

Shorten your reaction times! With PixelDetection®, you will receive the right alarm at exactly the right moment and always be able to see an overview. Proven for many years and repeatedly awarded, PixelDetection® is also known as the “artificial eye of the operator”.

[More about PixelDetection®](#)



## **JST myLogin<sup>®</sup> – the operator's login**

JST myLogin<sup>®</sup> is a revolutionary solution for logging on and off centrally and quickly from all operator workstations with your company ID. The login/logout process only takes a few moments. If you want, you can also save your personal layout of the screen contents.

[More about myLogin<sup>®</sup>](#)

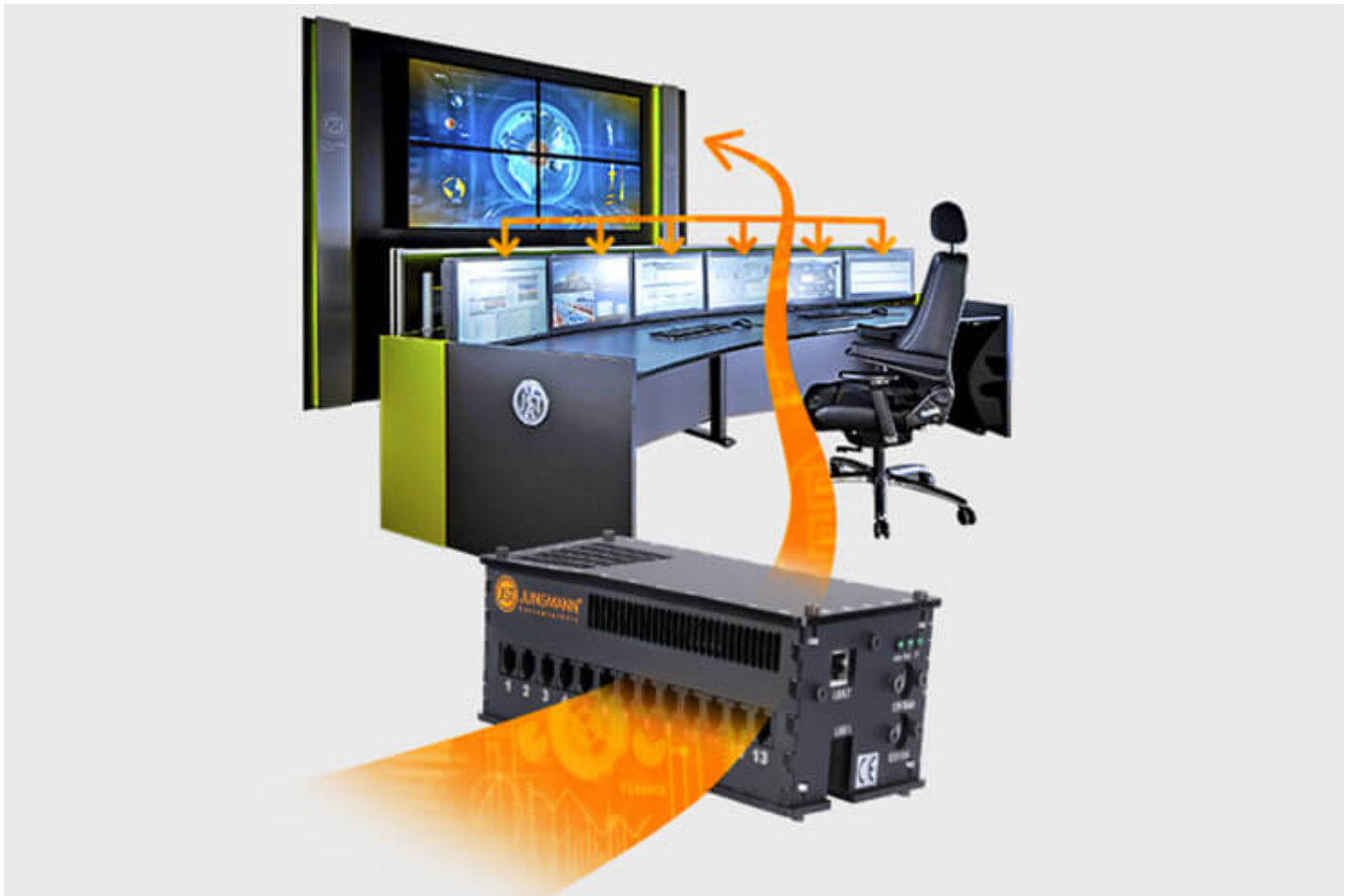




## CockpitView – the operator’s dashboard

Create dashboards with content from different computers on different networks! CockpitView offers you the perfect overview of your most important applications at a glance. With CockpitView you can stay in control and reduce monitors at the workplace or even the large-format system.

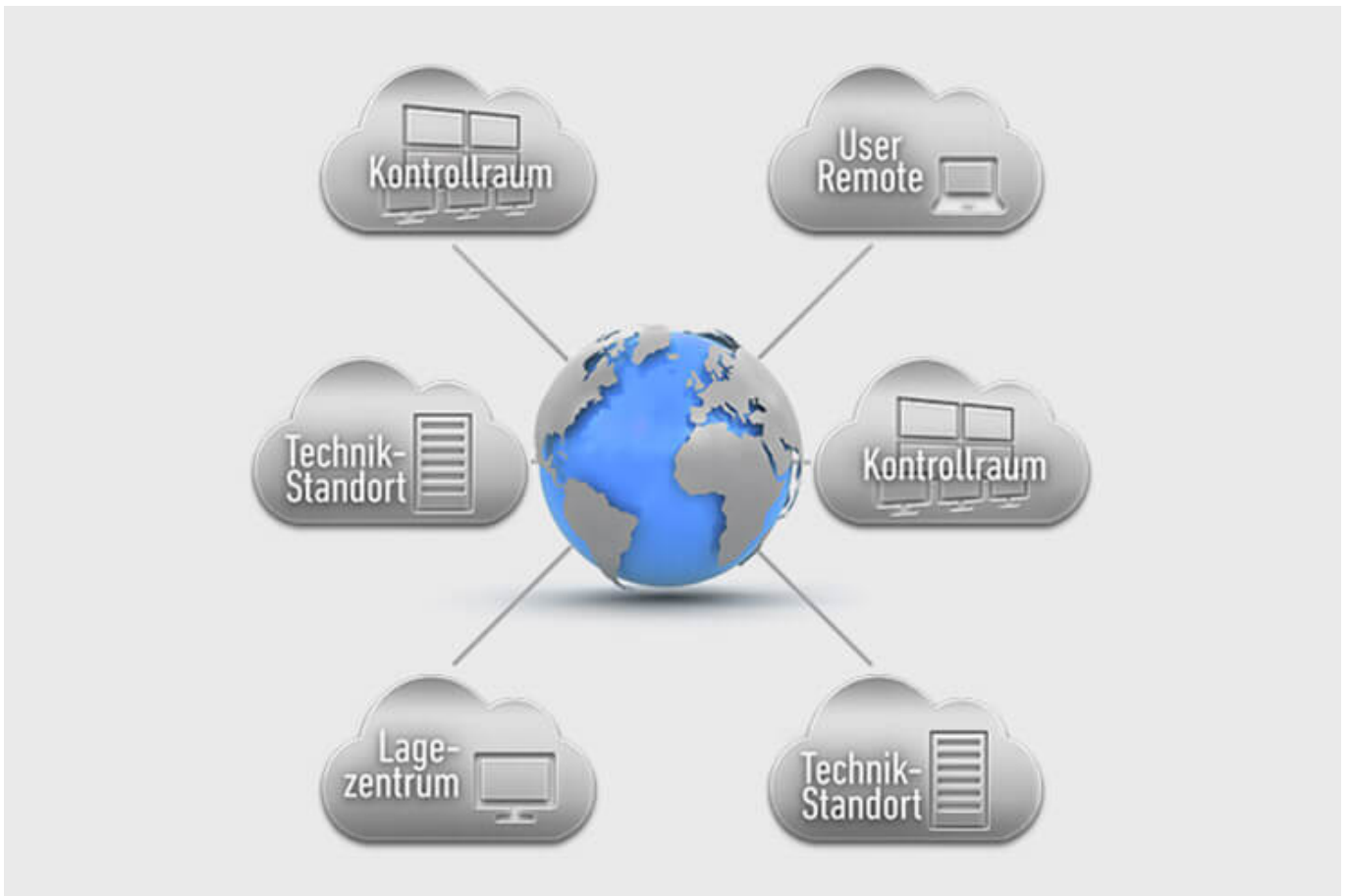
[More about CockpitView](#)



## Automation for Videowalls and operator workstations

With the JST CommandBox, you can monitor circuits, relays, audio signals, and much more, and have them automatically switched on at defined workstations or on the monitor wall when critical values are detected. The range of applications is almost unlimited!

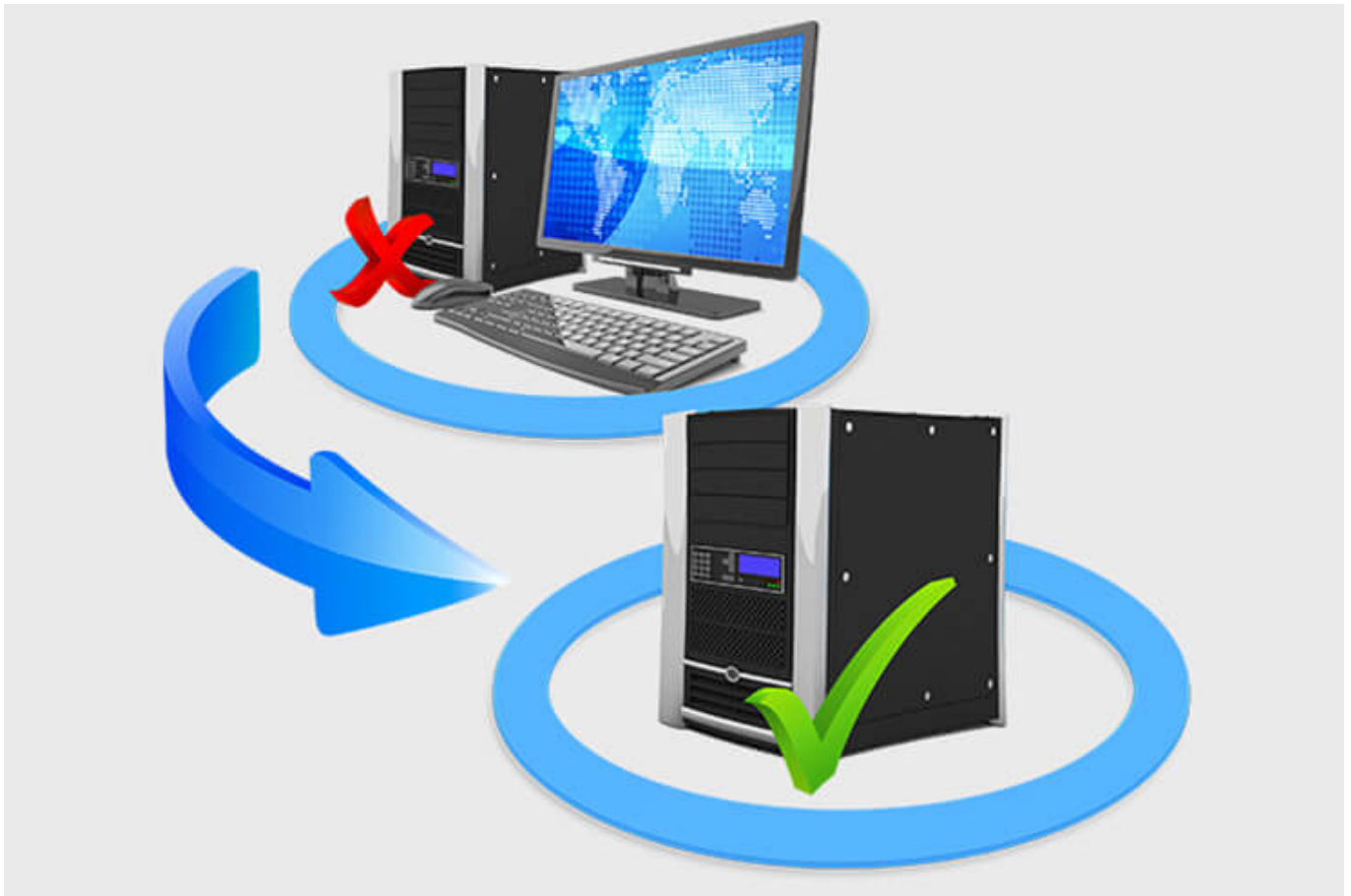
[More about ControlRoom Automation](#)



## **ControlRoom Remote: Connection of distributed systems and locations**

The optional remote interface of JST Systems allows you to visualise and operate remote computers and entire control rooms. Even complex emergency scenarios for backup control rooms are feasible!

[More about ControlRoom Remote](#)



## **Computer relocation and PC remote control**

By relocating computers from the control room to the technical room, you can reduce the thermal load and create more legroom for your employees. Additional advantages are the central administration of the computers as well as the physical access protection in the secured technical room.

[More about computer relocation](#)



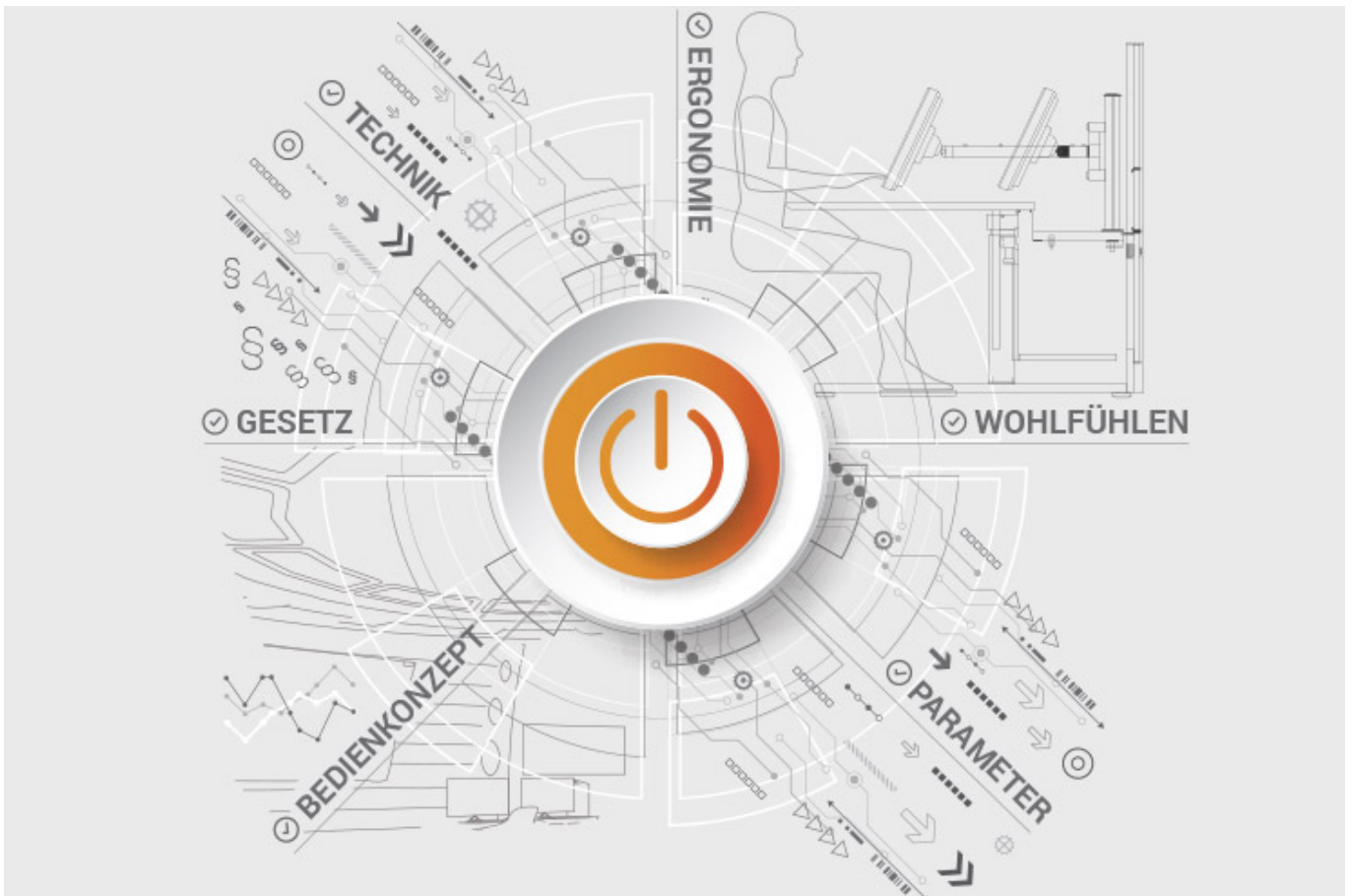
### Optional service and maintenance packages

To ensure that your control room stays as available as you need it to be, we offer preventative maintenance packages in various scopes and forms. You will receive customised solutions that will support your market and competitive success.

[More about service from JST](#)

## **JST product overview: Think of everything!**

**Set up an emergency control center with the appropriate components**



## Analysis and planning of your control room

Are you planning changes in your control room? Or would you like to breathe some fresh air into your control room? Then make use of the proven planning packages or the free online analysis from JST. Our experts will support you in accordance with BAUA: Study and all important standards and guidelines.

More about the free analysis



## **Large-display technology – react faster!**

Proactively present important information to the right people – before an incident can have a major impact. With scalable large display walls based on LCD displays and Cube technology, we are sure to find the right large-format system for your 24/7 operation!

More about JST large-display technology

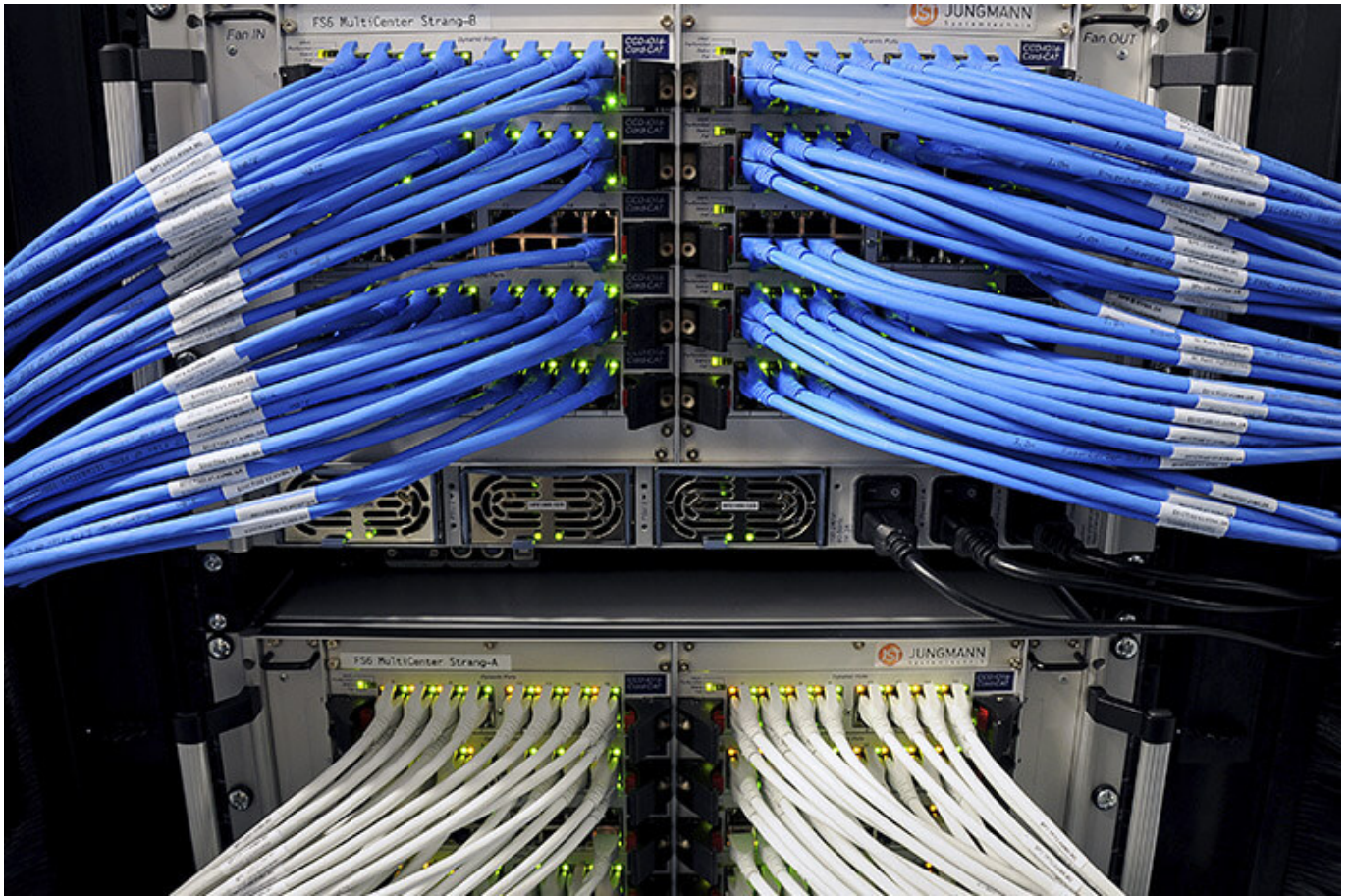


## **myGUI® – User interface for large-format system, workplace & infrastructure**

The intuitive myGUI® user interface in the 3D layout of your control room offers maximum operating convenience for your MultiConsoling® system. With just one click you can operate workstations, monitor walls and infrastructure – always absolutely safe and excellent in stressful situations.

More about myGUI<sup>®</sup>





## **MultiConsoling® – the command center of the control room**

MultiConsoling® is the high-availability control center for connecting all of the signals from your systems to the monitors at the operator's workstation and on the monitor walls. Transmission takes place in real time and does not require any software on your computers.

[More about MultiConsoling®](#)



**Control room furniture: ergonomic operator consoles, Recaro operator's chair, AllMedia Conference System**

You can get furniture and technology from a single source at JST. The highly stable Stratos operator consoles, with height adjustment and suitable surrounding furniture, form an ergonomic base for your control room.

[More about control room furniture](#)



## Large-screen control system with graphic controller

With the IP-based graphic controller you can get your monitor wall going. The graphic controller records all video signals over the IP network simultaneously and spreads them out at any position and in any scale on the large display wall.

[More about graphic controllers](#)



## PixelDetection® – the operator's eye

Shorten your reaction times! With PixelDetection®, you will receive the right alarm at exactly the right moment and always be able to see an overview. Proven for many years and repeatedly awarded, PixelDetection® is also known as the “artificial eye of the operator”.

[More about PixelDetection®](#)



## **JST myLogin<sup>®</sup> – the operator's login**

JST myLogin<sup>®</sup> is a revolutionary solution for logging on and off centrally and quickly from all operator workstations with your company ID. The login/logout process only takes a few moments. If you want, you can also save your personal layout of the screen contents.

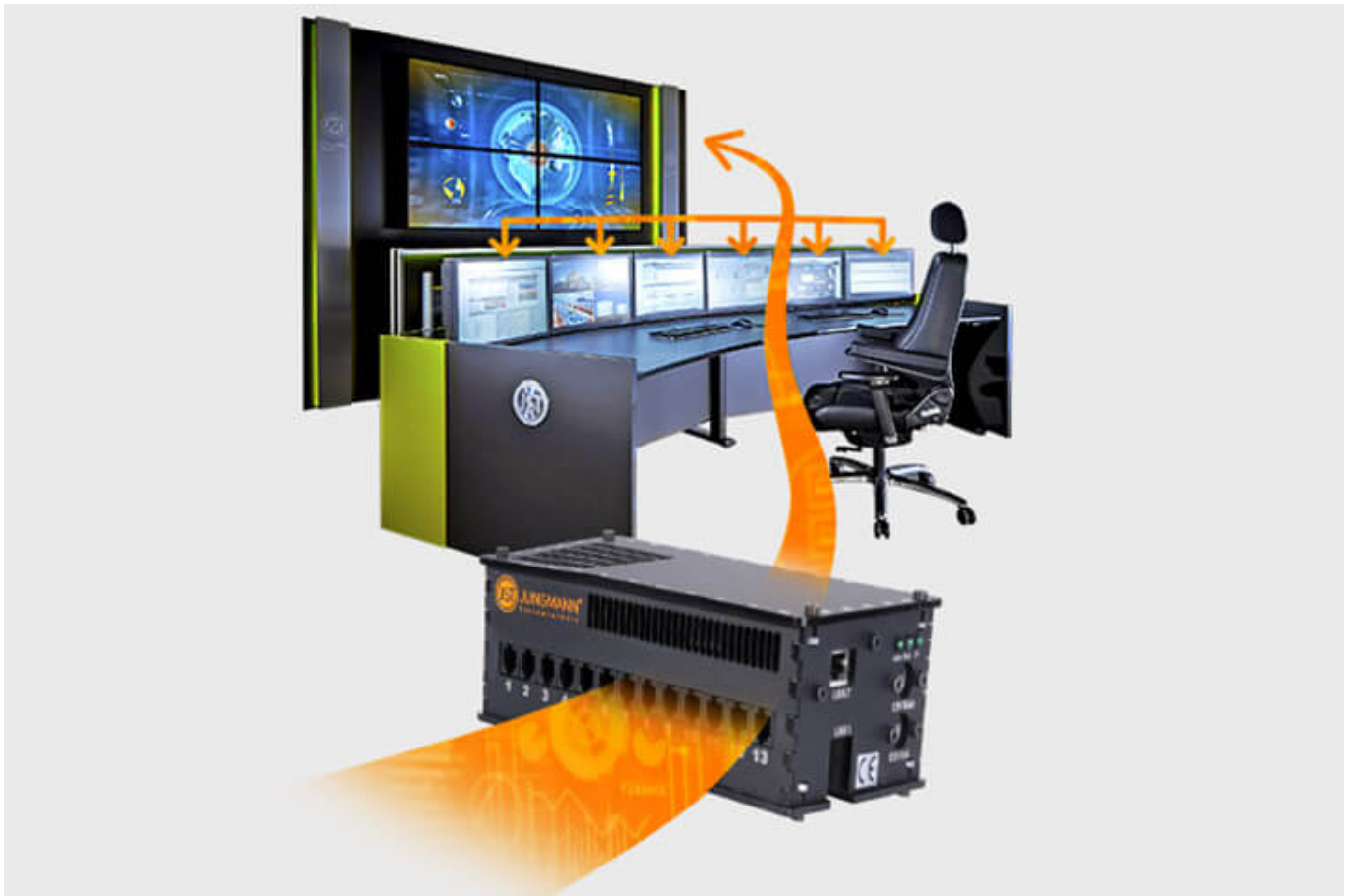
[More about myLogin<sup>®</sup>](#)



## CockpitView – the operator’s dashboard

Create dashboards with content from different computers on different networks! CockpitView offers you the perfect overview of your most important applications at a glance. With CockpitView you can stay in control and reduce monitors at the workplace or even the large-format system.

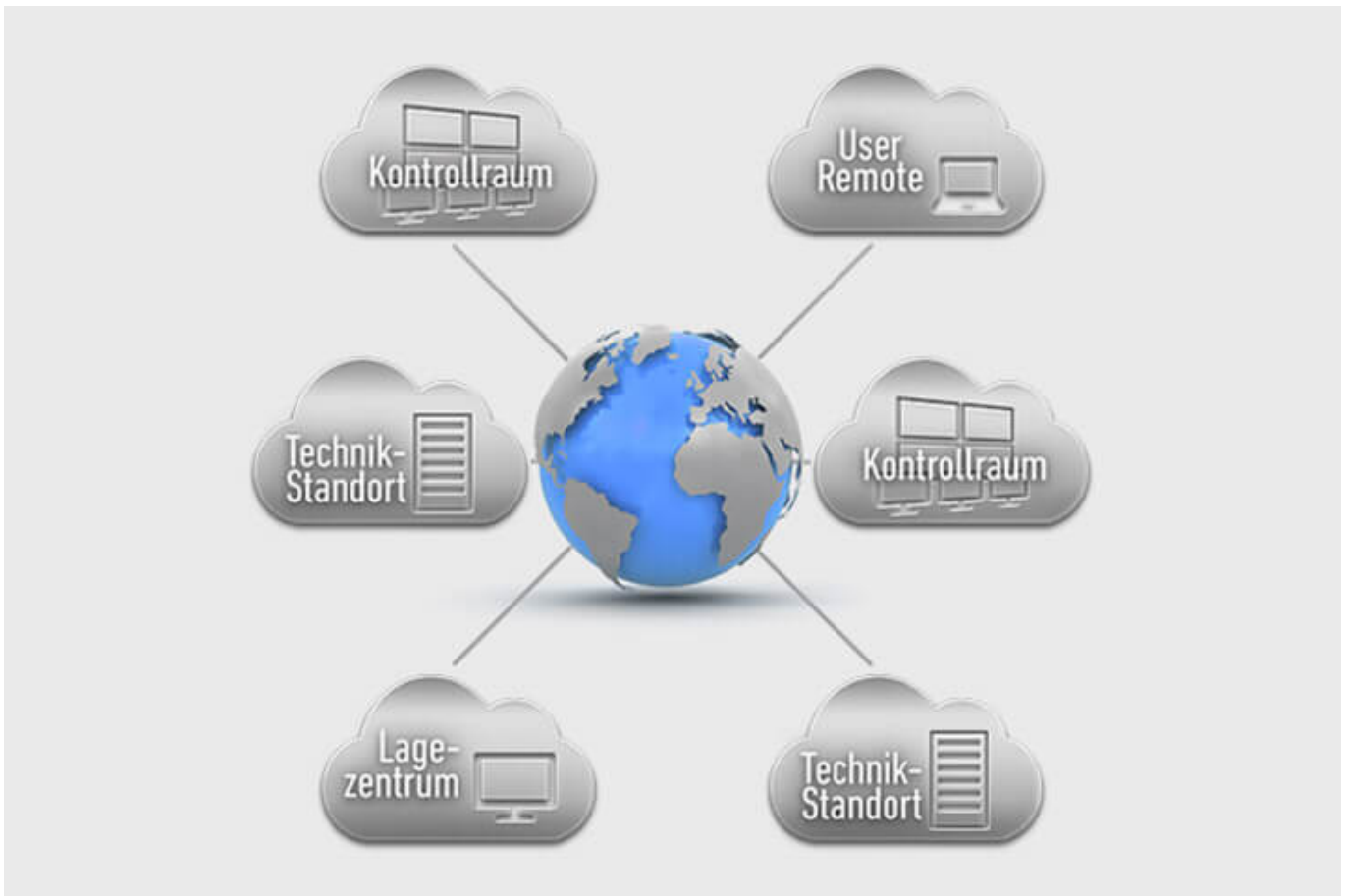
[More about CockpitView](#)



## Automation for Videowalls and operator workstations

With the JST CommandBox, you can monitor circuits, relays, audio signals, and much more, and have them automatically switched on at defined workstations or on the monitor wall when critical values are detected. The range of applications is almost unlimited!

[More about ControlRoom Automation](#)



## **ControlRoom Remote: Connection of distributed systems and locations**

The optional remote interface of JST Systems allows you to visualise and operate remote computers and entire control rooms. Even complex emergency scenarios for backup control rooms are feasible!

[More about ControlRoom Remote](#)





## **Computer relocation and PC remote control**

By relocating computers from the control room to the technical room, you can reduce the thermal load and create more legroom for your employees. Additional advantages are the central administration of the computers as well as the physical access protection in the secured technical room.

[More about computer relocation](#)



### Optional service and maintenance packages

To ensure that your control room stays as available as you need it to be, we offer preventative maintenance packages in various scopes and forms. You will receive customised solutions that will support your market and competitive success.

[More about service from JST](#)

### Was möchten Sie als Nächstes tun?

Ich möchte

- [das kostenfreie Praxisbuch der Kontrollräume anfordern](#)
- [einen Rückruf für eine unverbindliche Beratung](#)
- [den Kontrollraum-Simulator in Buxtehude besuchen](#)
- [eine digitale 360°-Tour in einem Kontrollraum erleben](#)

- [mehr über Kontrollräume auf dem ko:mon Kongress erfahren](#)

We are happy to answer any questions you have regarding the modernisation of emergency control centers

**+49 4161 54044-0**

---

You are currently viewing a placeholder content from **YouTube**. To access the actual content, click the button below. Please note that doing so will share data with third-party providers.

[More Information](#)

[Unblock content](#) [Accept required service and unblock content](#)