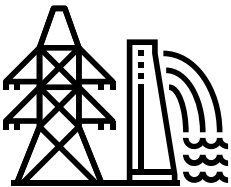


## The customised power supply control center – JST offers a complete service programme from 3D planning to implementation

Every energy provider is dependent on a **first-class power supply control center**. And this is exactly where JST's passion lies. We leave nothing to chance when planning your power supply control center. In our detailed planning of the **modern power supply control center**, we include both the **latest ergonomic aspects** and the **most sophisticated technical features** for more **comfort and safety**.

In our thorough control center analysis, we start by analysing components such as **ergonomics, viewing distances and angles, hardware, software, infrastructure**, adaptation of existing systems, network and **optimal lighting**. The optimisation of human communication is also important to us. Who talks to whom, where are hand signals sufficient, which workstations require absolute silence. We keep an eagle eye on all of this.

**OFFER PROFESSIONAL POWER SUPPLY CONTROL CENTER PLANNING**





Stadtwerke Ratingen

- Planning packages: Complete power supply control center or subsections
- Architecture: Control center planning, DIN EN50518
- Ergonomics: Control center desks, lighting, acoustics, order
- Technology: IT architecture, interfaces, rack planning, circuit diagram
- Safety: baua Study, BG, VBG, escape routes
- Potential analysis: Free of charge





## Practical examples: Power supply control center from professionals

“We want a new power supply control center!” Most of our relationships with energy customers start with this desire, or something similar. Jungmann Systemtechnik is a **sought-after expert** for the **planning and implementation of power supply control centers in the energy sector**. We succeed time and time again not only in impressing each and every customer, but also in making them **thoroughly happy**. All the while complying confidently with all the necessary safety standards. Let our reference reports demonstrate our great projects and impressive results.

**We will be happy to put you in touch with the appropriate contact person.**

### Newly set up control center for InfraLeuna

“You can concentrate on your core business, we will design and develop the framework conditions for your production.” With this company philosophy, InfraLeuna GmbH – the operator of the infrastructure facilities at the Leuna chemical site – strives to provide its customers at the Leuna chemical site with all necessary services at reasonable prices and in high quality. This also includes the execution of extensive modernisation work. Among which includes the installation of a new central control room.

**GO TO PROJECT**



*A gesture that says it all: With thumbs up, the Project Managers in charge are sending a clear message about the new central control room.*

**Jochen Rösner / Mark Muschick / Eberhard Schoof (from left to right)**

The Project Managers in charge





## Spot on with future-proof control center

Structural changes in the company, the optimisation of workstations and a complete modernisation of the control technology – three important requirements that were implemented at the Reick site of DREWAG – Stadtwerke Dresden GmbH. After a thorough survey of the market, the DREWAG management decided in favour of the control room specialists from Jungmann Systemtechnik as their partners for this mammoth task. The result: “A control room that can truly be described as spot on,” says Tino Kuhnke (Group Manager for Generation, Control Rooms).

**GO TO PROJECT**



**DREWAG** 

*In Dresden, they are impressed by the new installation from JST: "We now possess a flexible and future-proof technology."*

**Hartmut Hinz / Jens Meller / Andreas Rammer / Christian Helmholz (from left to right)**

DREWAG GmbH





## Newly set up control center controls and monitors wind turbines worldwide

Be it weather data on a world map, detailed electrical circuit diagrams or various camera displays – with the new JST video wall, the employees of the Bremen control room at wpd windmanager can keep a close eye on wind turbines around the globe. As a specialist in the field of commercial and technical management of onshore and offshore wind farms, the company has moved into completely new headquarters in Bremen, which is also home to the control room and First Level Support with new equipment from JST – Jungmann Systemtechnik.

**GO TO PROJECT**

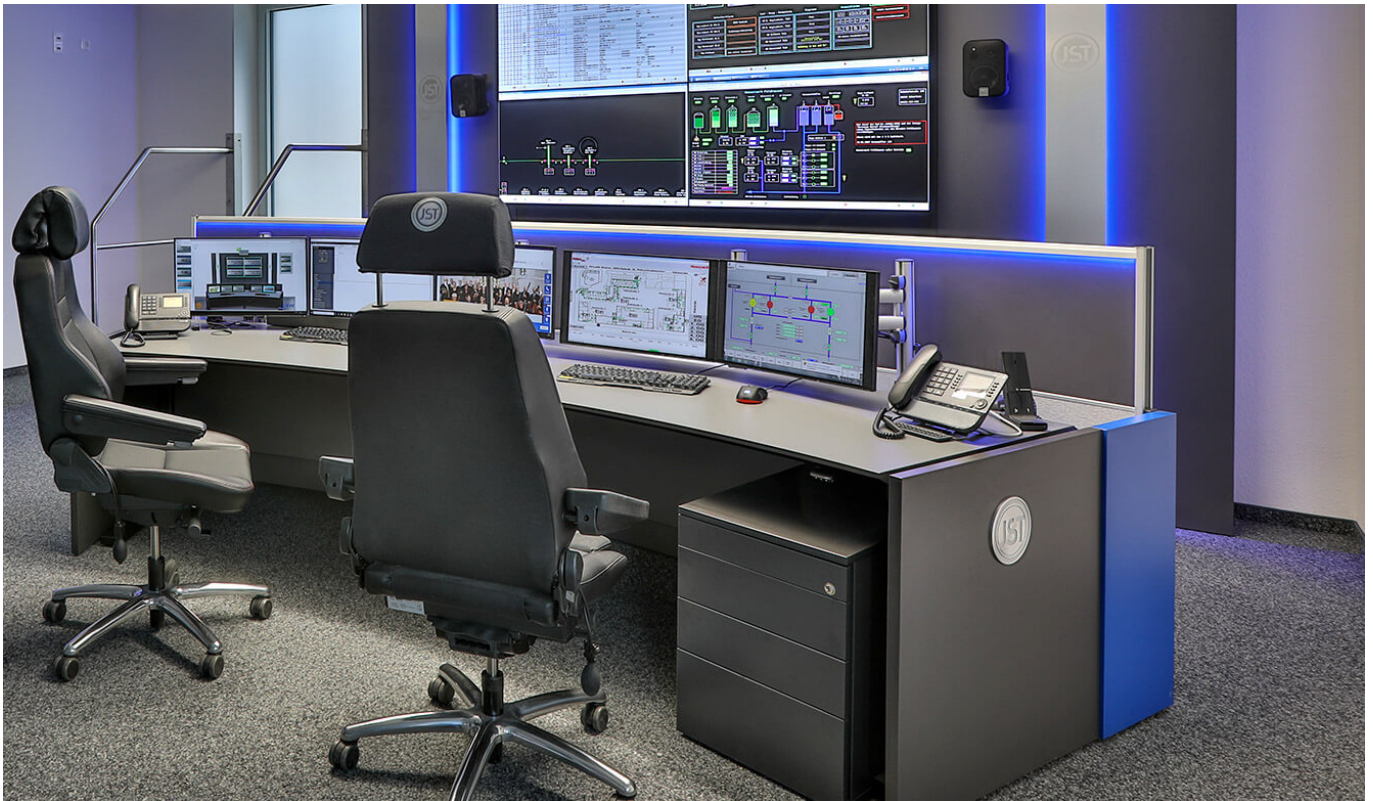


*"The collaboration with JST went perfectly."*

**Marc Rosenkranz**

Responsible for the management of the First Level Service and the new control room in Bremen





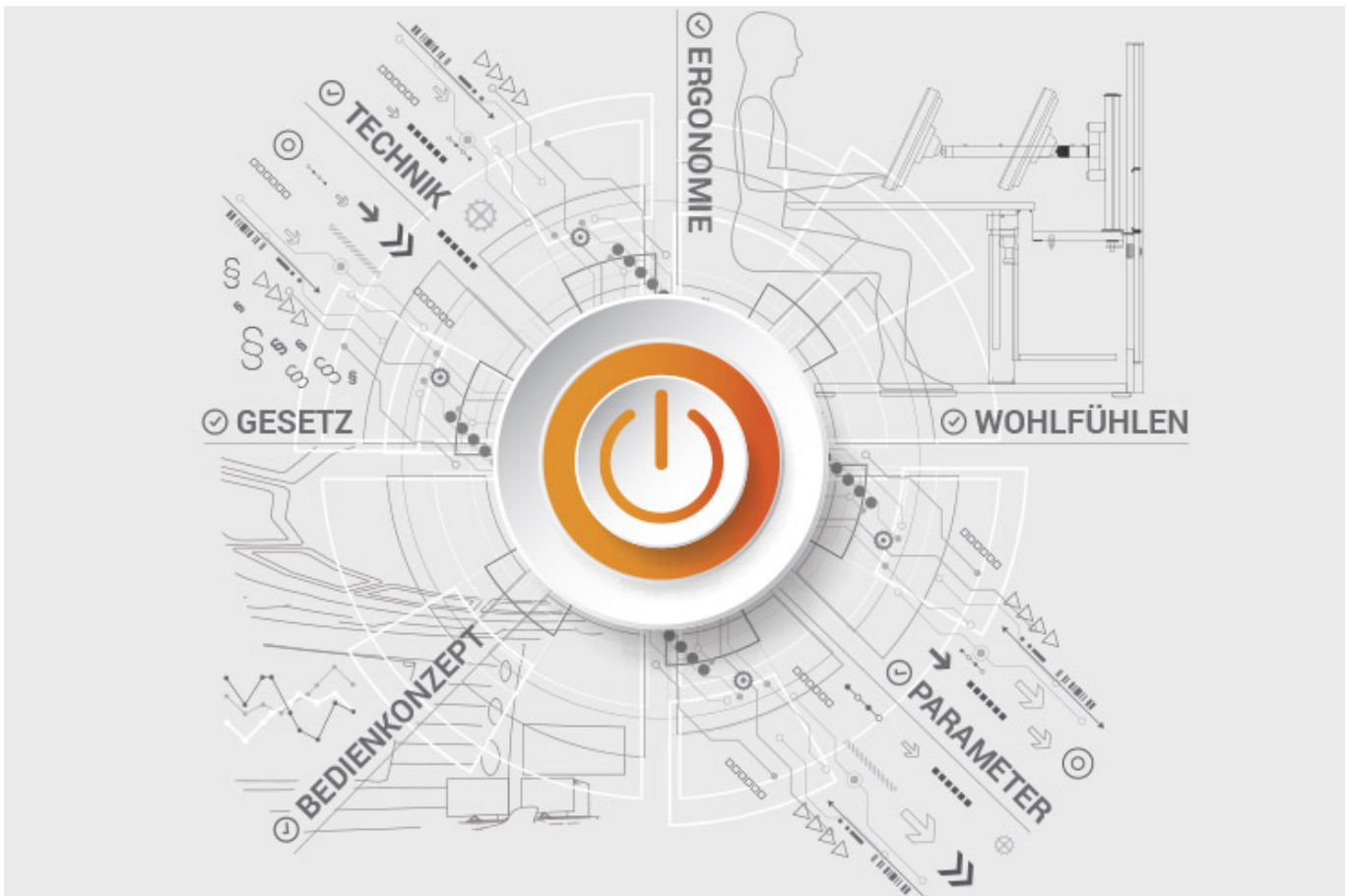
## ALL PROJECTS

### Documents for download

- [Project report on the new central measuring station of Infraleuna \(PDF\)](#)
- [Comfortable and intuitive system operation at DREWAG \(PDF\)](#)

**JST product overview: Think of everything!**

**Customised power supply control center with suitable components**



## Analysis and planning of your control room

Are you planning changes in your control room? Or would you like to breathe some fresh air into your control room? Then make use of the proven planning packages or the free online analysis from JST. Our experts will support you in accordance with BAUA: Study and all important standards and guidelines.

More about the free analysis



## **Large-display technology – react faster!**

Proactively present important information to the right people – before an incident can have a major impact. With scalable large display walls based on LCD displays and Cube technology, we are sure to find the right large-format system for your 24/7 operation!

More about JST large-display technology



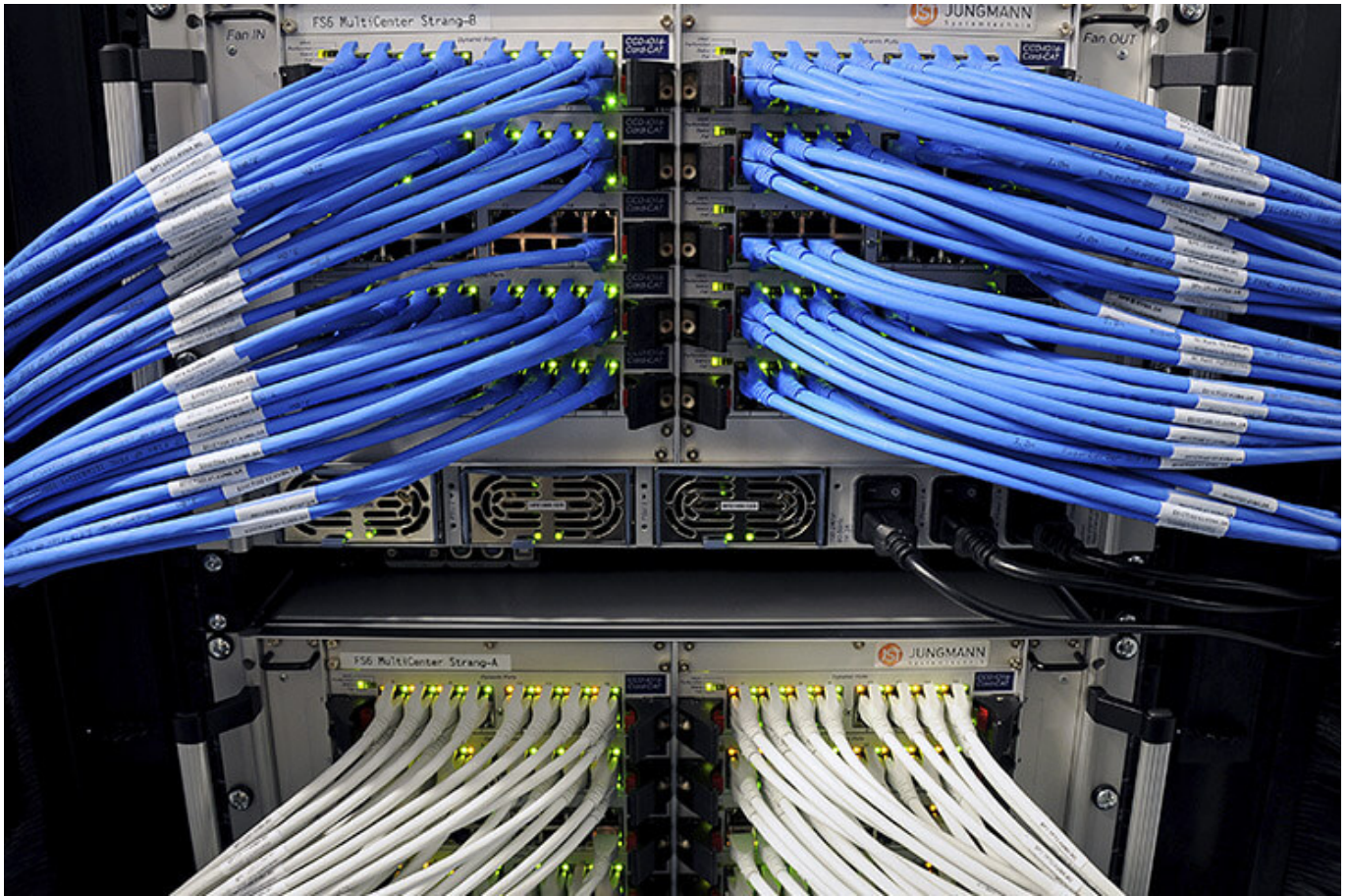


## **myGUI® – User interface for large-format system, workplace & infrastructure**

The intuitive myGUI® user interface in the 3D layout of your control room offers maximum operating convenience for your MultiConsoling® system. With just one click you can operate workstations, monitor walls and infrastructure – always absolutely safe and excellent in stressful situations.

[More about myGUI®](#)





## **MultiConsoling® – the command center of the control room**

MultiConsoling® is the high-availability control center for connecting all of the signals from your systems to the monitors at the operator's workstation and on the monitor walls. Transmission takes place in real time and does not require any software on your computers.

[More about MultiConsoling®](#)



**Control room furniture: ergonomic operator consoles, Recaro operator's chair, AllMedia Conference System**

You can get furniture and technology from a single source at JST. The highly stable Stratos operator consoles, with height adjustment and suitable surrounding furniture, form an ergonomic base for your control room.

[More about control room furniture](#)





## Large-screen control system with graphic controller

With the IP-based graphic controller you can get your monitor wall going. The graphic controller records all video signals over the IP network simultaneously and spreads them out at any position and in any scale on the large display wall.

[More about graphic controllers](#)



## PixelDetection® – the operator's eye

Shorten your reaction times! With PixelDetection®, you will receive the right alarm at exactly the right moment and always be able to see an overview. Proven for many years and repeatedly awarded, PixelDetection® is also known as the “artificial eye of the operator”.

[More about PixelDetection®](#)





## **JST myLogin<sup>®</sup> – the operator's login**

JST myLogin<sup>®</sup> is a revolutionary solution for logging on and off centrally and quickly from all operator workstations with your company ID. The login/logout process only takes a few moments. If you want, you can also save your personal layout of the screen contents.

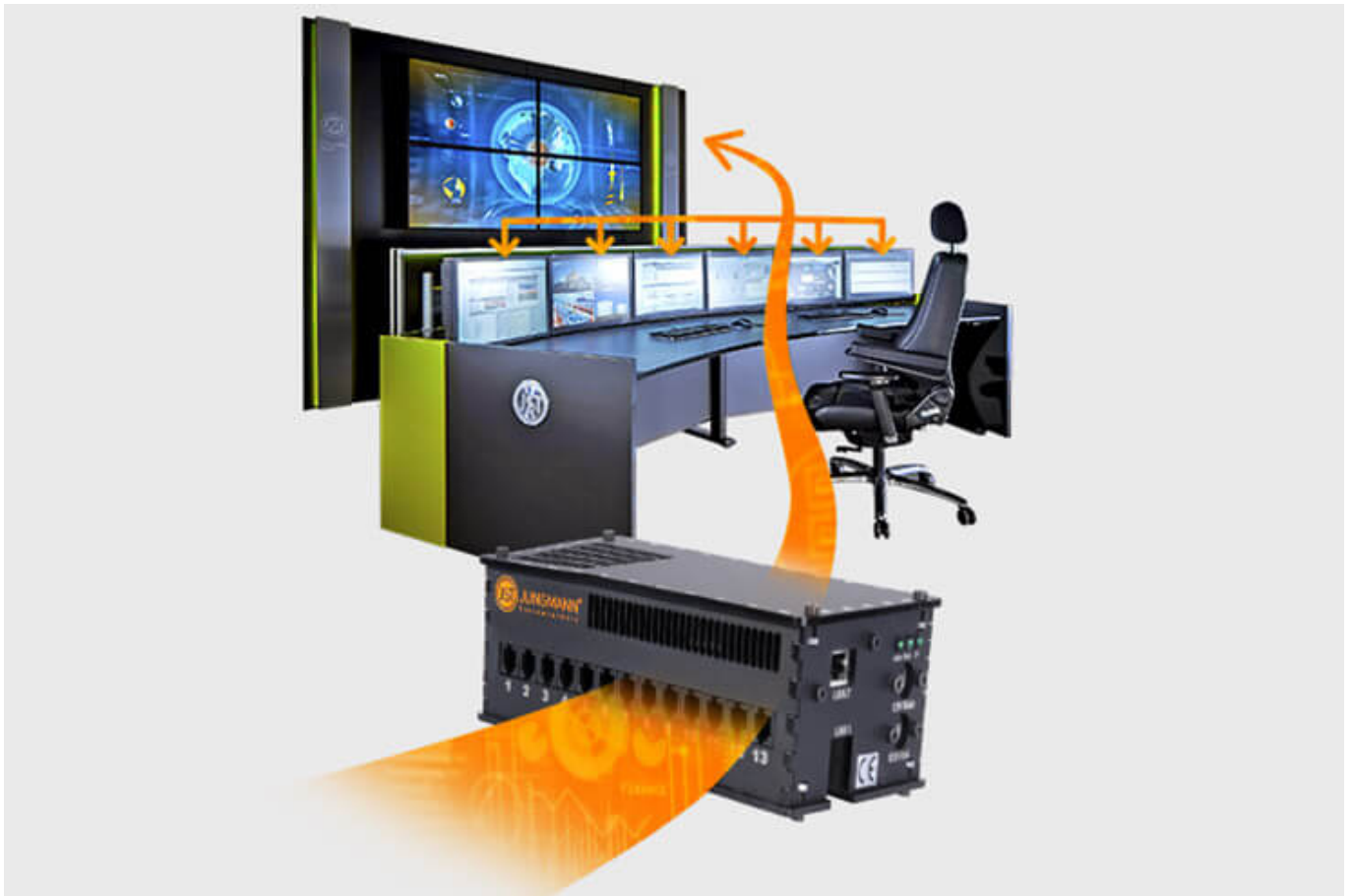
[More about myLogin<sup>®</sup>](#)



## CockpitView – the operator’s dashboard

Create dashboards with content from different computers on different networks! CockpitView offers you the perfect overview of your most important applications at a glance. With CockpitView you can stay in control and reduce monitors at the workplace or even the large-format system.

[More about CockpitView](#)



## Automation for Videowalls and operator workstations

With the JST CommandBox, you can monitor circuits, relays, audio signals, and much more, and have them automatically switched on at defined workstations or on the monitor wall when critical values are detected. The range of applications is almost unlimited!

[More about ControlRoom Automation](#)



## **ControlRoom Remote: Connection of distributed systems and locations**

The optional remote interface of JST Systems allows you to visualise and operate remote computers and entire control rooms. Even complex emergency scenarios for backup control rooms are feasible!

[More about ControlRoom Remote](#)





## **Computer relocation and PC remote control**

By relocating computers from the control room to the technical room, you can reduce the thermal load and create more legroom for your employees. Additional advantages are the central administration of the computers as well as the physical access protection in the secured technical room.

[More about computer relocation](#)



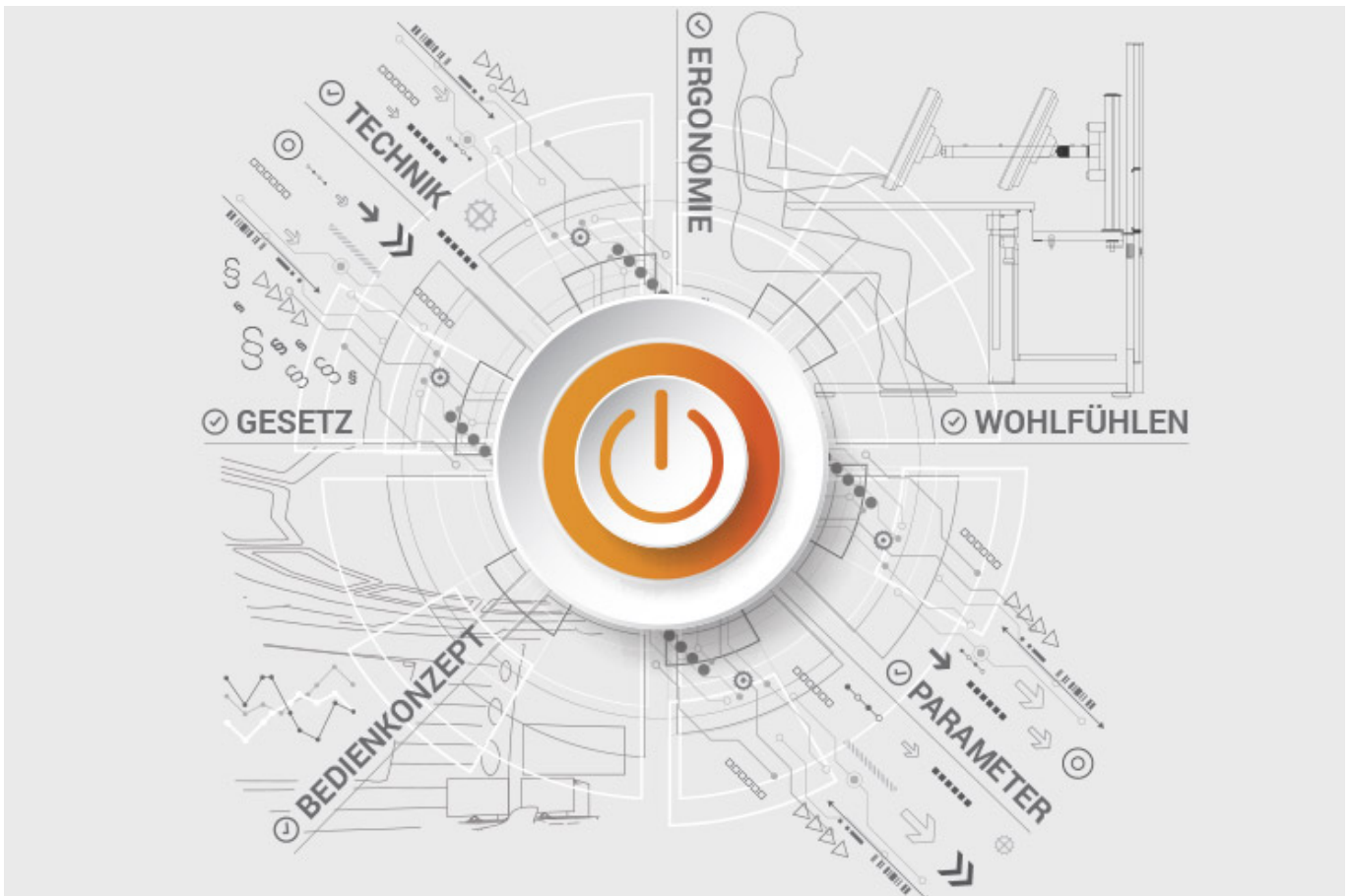
### Optional service and maintenance packages

To ensure that your control room stays as available as you need it to be, we offer preventative maintenance packages in various scopes and forms. You will receive customised solutions that will support your market and competitive success.

[More about service from JST](#)

## JST product overview: Think of everything!

### Customised power supply control center with suitable components



## Analysis and planning of your control room

Are you planning changes in your control room? Or would you like to breathe some fresh air into your control room? Then make use of the proven planning packages or the free online analysis from JST. Our experts will support you in accordance with BAUA: Study and all important standards and guidelines.

[More about the free analysis](#)



## **Large-display technology – react faster!**

Proactively present important information to the right people – before an incident can have a major impact. With scalable large display walls based on LCD displays and Cube technology, we are sure to find the right large-format system for your 24/7 operation!

More about JST large-display technology

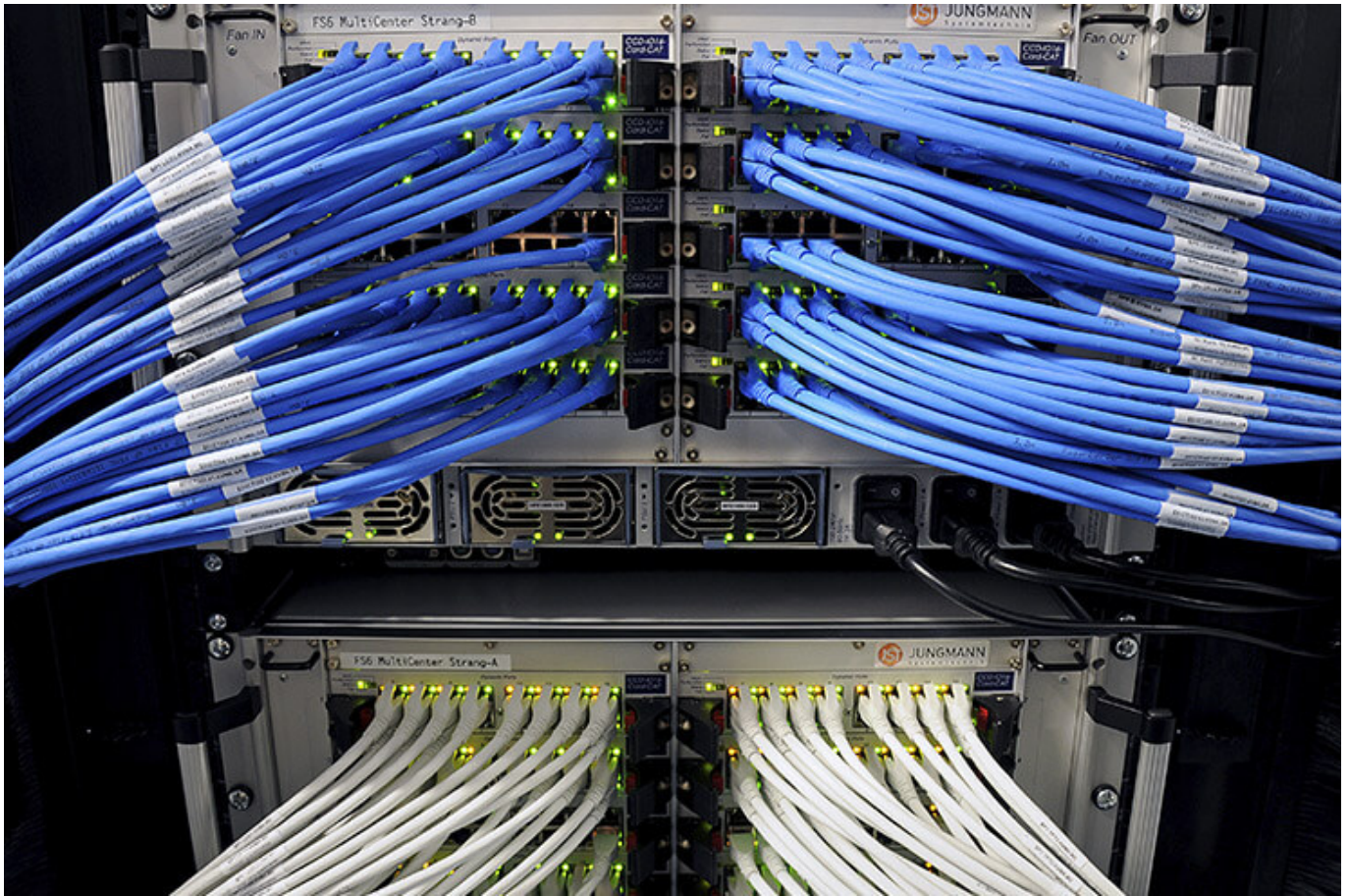




## **myGUI® – User interface for large-format system, workplace & infrastructure**

The intuitive myGUI® user interface in the 3D layout of your control room offers maximum operating convenience for your MultiConsoling® system. With just one click you can operate workstations, monitor walls and infrastructure – always absolutely safe and excellent in stressful situations.

[More about myGUI®](#)



## **MultiConsoling® – the command center of the control room**

MultiConsoling® is the high-availability control center for connecting all of the signals from your systems to the monitors at the operator's workstation and on the monitor walls. Transmission takes place in real time and does not require any software on your computers.

[More about MultiConsoling®](#)



**Control room furniture: ergonomic operator consoles, Recaro operator's chair, AllMedia Conference System**

You can get furniture and technology from a single source at JST. The highly stable Stratos operator consoles, with height adjustment and suitable surrounding furniture, form an ergonomic base for your control room.

[More about control room furniture](#)





## Large-screen control system with graphic controller

With the IP-based graphic controller you can get your monitor wall going. The graphic controller records all video signals over the IP network simultaneously and spreads them out at any position and in any scale on the large display wall.

[More about graphic controllers](#)





## PixelDetection® – the operator's eye

Shorten your reaction times! With PixelDetection®, you will receive the right alarm at exactly the right moment and always be able to see an overview. Proven for many years and repeatedly awarded, PixelDetection® is also known as the “artificial eye of the operator”.

[More about PixelDetection®](#)



## **JST myLogin<sup>®</sup> – the operator's login**

JST myLogin<sup>®</sup> is a revolutionary solution for logging on and off centrally and quickly from all operator workstations with your company ID. The login/logout process only takes a few moments. If you want, you can also save your personal layout of the screen contents.

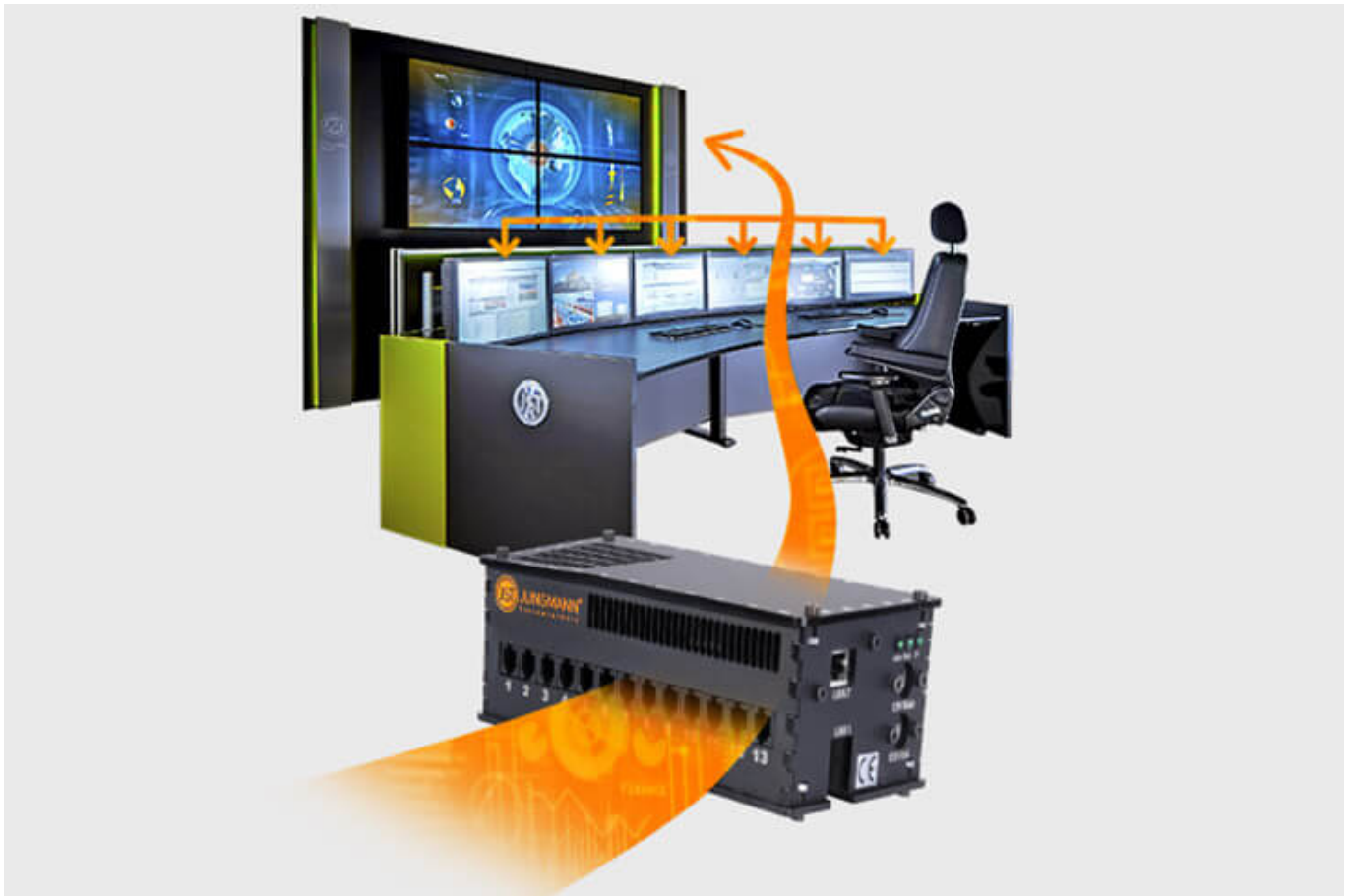
[More about myLogin<sup>®</sup>](#)



## CockpitView – the operator’s dashboard

Create dashboards with content from different computers on different networks! CockpitView offers you the perfect overview of your most important applications at a glance. With CockpitView you can stay in control and reduce monitors at the workplace or even the large-format system.

[More about CockpitView](#)

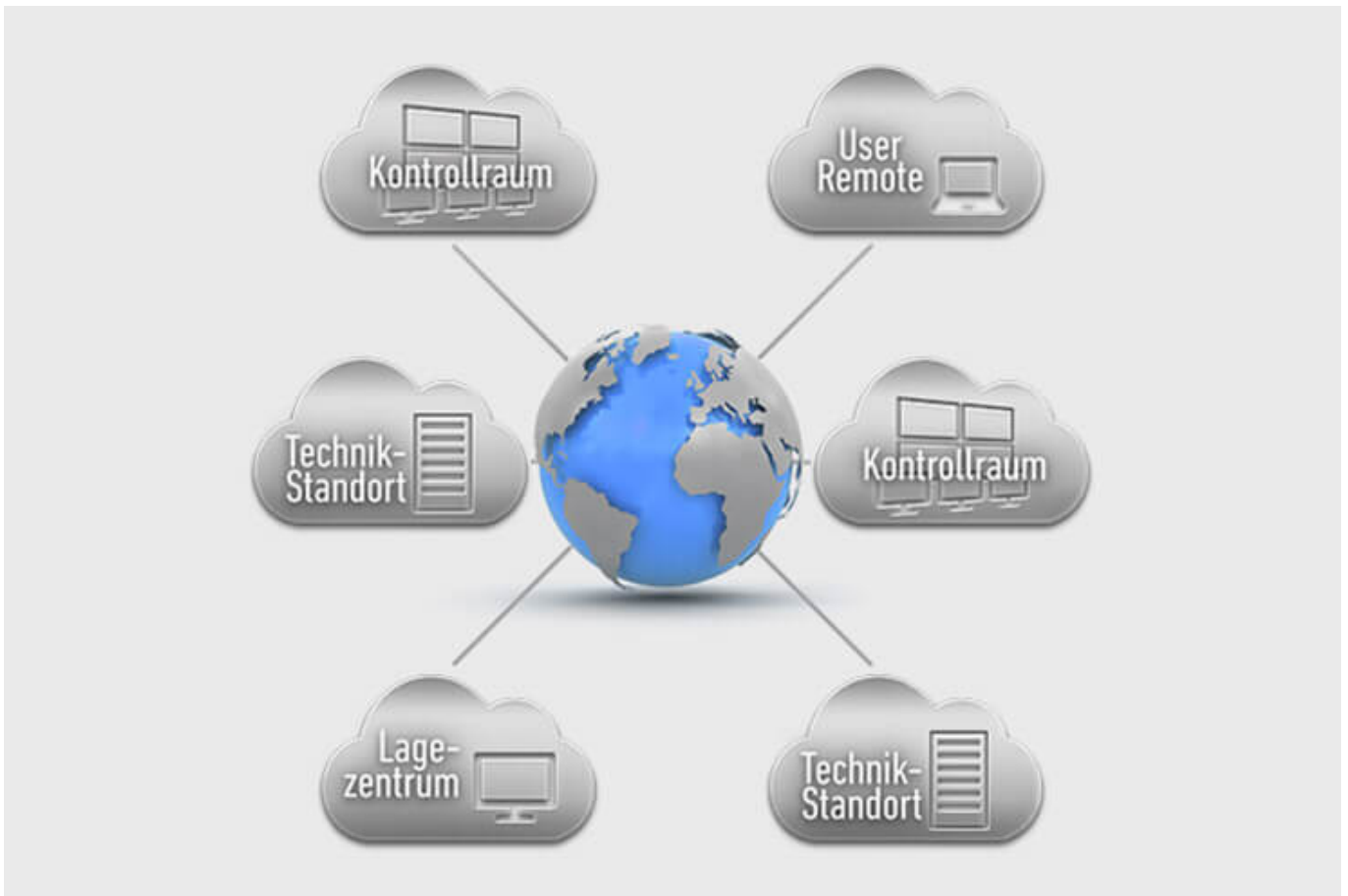


## Automation for Videowalls and operator workstations

With the JST CommandBox, you can monitor circuits, relays, audio signals, and much more, and have them automatically switched on at defined workstations or on the monitor wall when critical values are detected. The range of applications is almost unlimited!

[More about ControlRoom Automation](#)

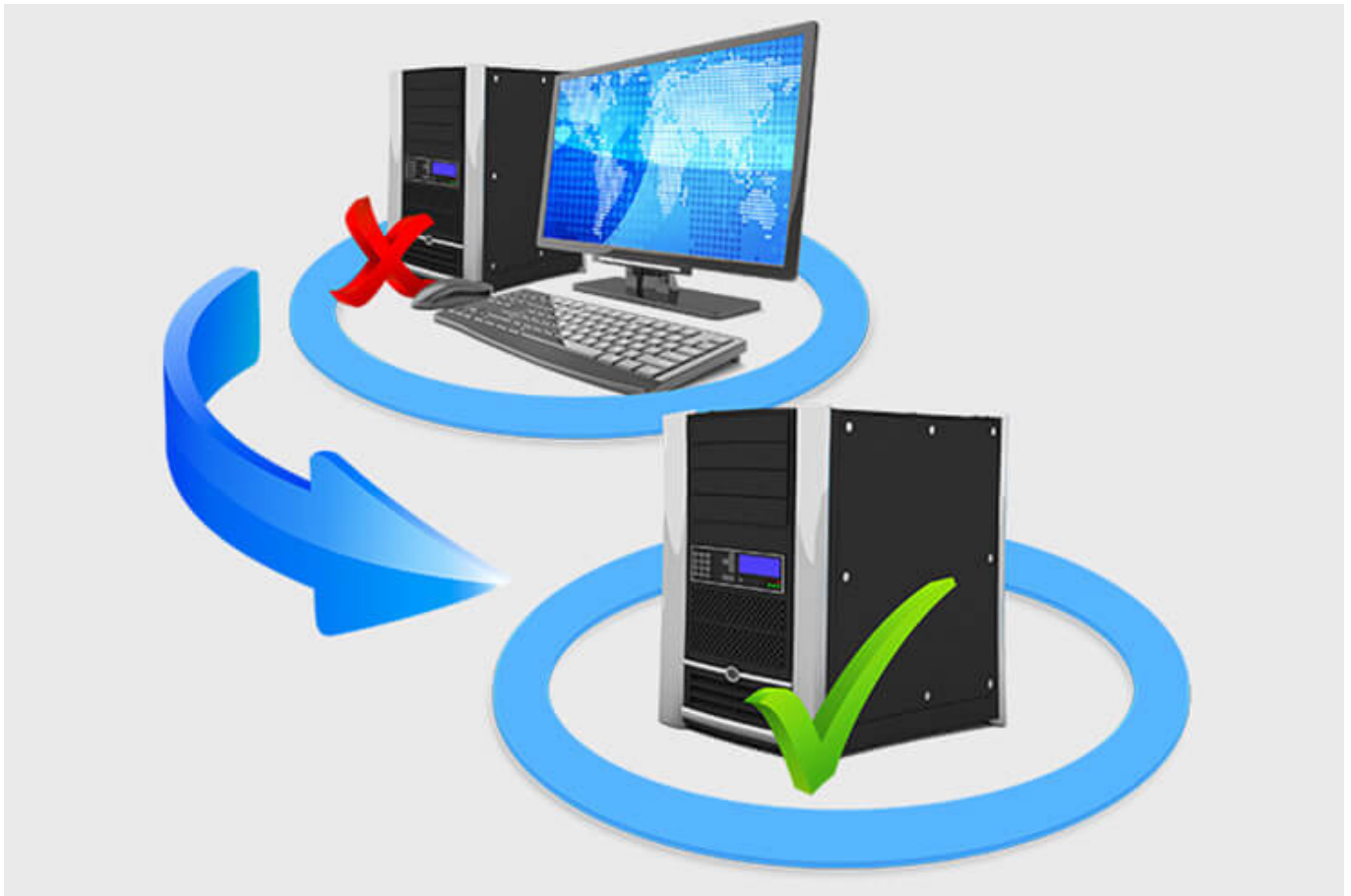




## **ControlRoom Remote: Connection of distributed systems and locations**

The optional remote interface of JST Systems allows you to visualise and operate remote computers and entire control rooms. Even complex emergency scenarios for backup control rooms are feasible!

[More about ControlRoom Remote](#)



## **Computer relocation and PC remote control**

By relocating computers from the control room to the technical room, you can reduce the thermal load and create more legroom for your employees. Additional advantages are the central administration of the computers as well as the physical access protection in the secured technical room.

[More about computer relocation](#)



### Optional service and maintenance packages

To ensure that your control room stays as available as you need it to be, we offer preventative maintenance packages in various scopes and forms. You will receive customised solutions that will support your market and competitive success.

[More about service from JST](#)

### Was möchten Sie als Nächstes tun?

Ich möchte

- [das kostenfreie Praxisbuch der Kontrollräume anfordern](#)
- [einen Rückruf für eine unverbindliche Beratung](#)
- [den Kontrollraum-Simulator in Buxtehude besuchen](#)
- [eine digitale 360°-Tour in einem Kontrollraum erleben](#)

- [mehr über Kontrollräume auf dem ko:mon Kongress erfahren](#)

We are happy to answer your questions regarding customised power supply control centers

**+49 4161 54044-0**

---

You are currently viewing a placeholder content from **YouTube**. To access the actual content, click the button below. Please note that doing so will share data with third-party providers.

[More Information](#)

[Unblock content](#) [Accept required service and unblock content](#)