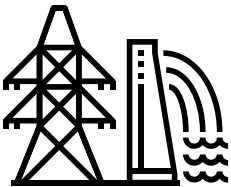


Power supply control rooms in the energy and water industry with tried and true solutions

If you are looking for professional support in modernising your power supply control room, JST is the right partner. With almost two decades of expert know-how, we are able to implement sophisticated and technically refined power supply control rooms for all branches of the energy sector. With us there are no cookie-cutter solutions. We will plan your power supply control room according to the **specific needs** of your company and the **architectural conditions** on site. We put the finishing touches on your new power supply control room with **visionary professional tools** developed by JST to meet the highest demands. Our PixelDetection[®] monitoring software, for example, works reliably in the background just like an additional watchful eye and will alert you at the right moment. Would you like to experience all the possibilities for your power supply control room live? We would like to invite you to our control room simulator. You will be thrilled!

MODERNISE POWER SUPPLY CONTROL ROOM NOW?





Stadtwerke Ratingen

- First steps: Thorough analysis and planning
- From a single source: architecture, technology, light, acoustics, climate
- Ergonomic: Control room furniture from Germany
- Proactive: Monitor walls for 24/7 operation
- Stress-free: thanks to efficient operation
- Pleasant: Optimal working atmosphere





Practical examples: Power supply control room modernisation

Whether in industry or at public utilities: **24/7 continuous operation in the energy industry** is subject to **strict safety regulations** that must be observed at all times. Considerable damage can happen quickly in an emergency. It therefore makes sense to **significantly reduce the workload** of the employees by **modernising the power supply control room**. We know **the requirements** and know which hardware and software solutions will provide the greatest benefit for you. This also applies to our [ergonomic control room furniture](#) which is an important part of a good working atmosphere. Browse through our [references](#). We are confident that there is a completed project that fits your requirements.

We will be happy to put you in touch with the appropriate contact person.

Impressive quality awareness

For the second time within a few months, the team from Jungmann Systemtechnik was able to demonstrate its technical know-how for GP JOULE GmbH, which specialises in renewable energies. Two control rooms, in which redundant systems operate, were constructed for the power plant project planner in the fields of solar energy, wind energy and biomass.

GO TO PROJECT

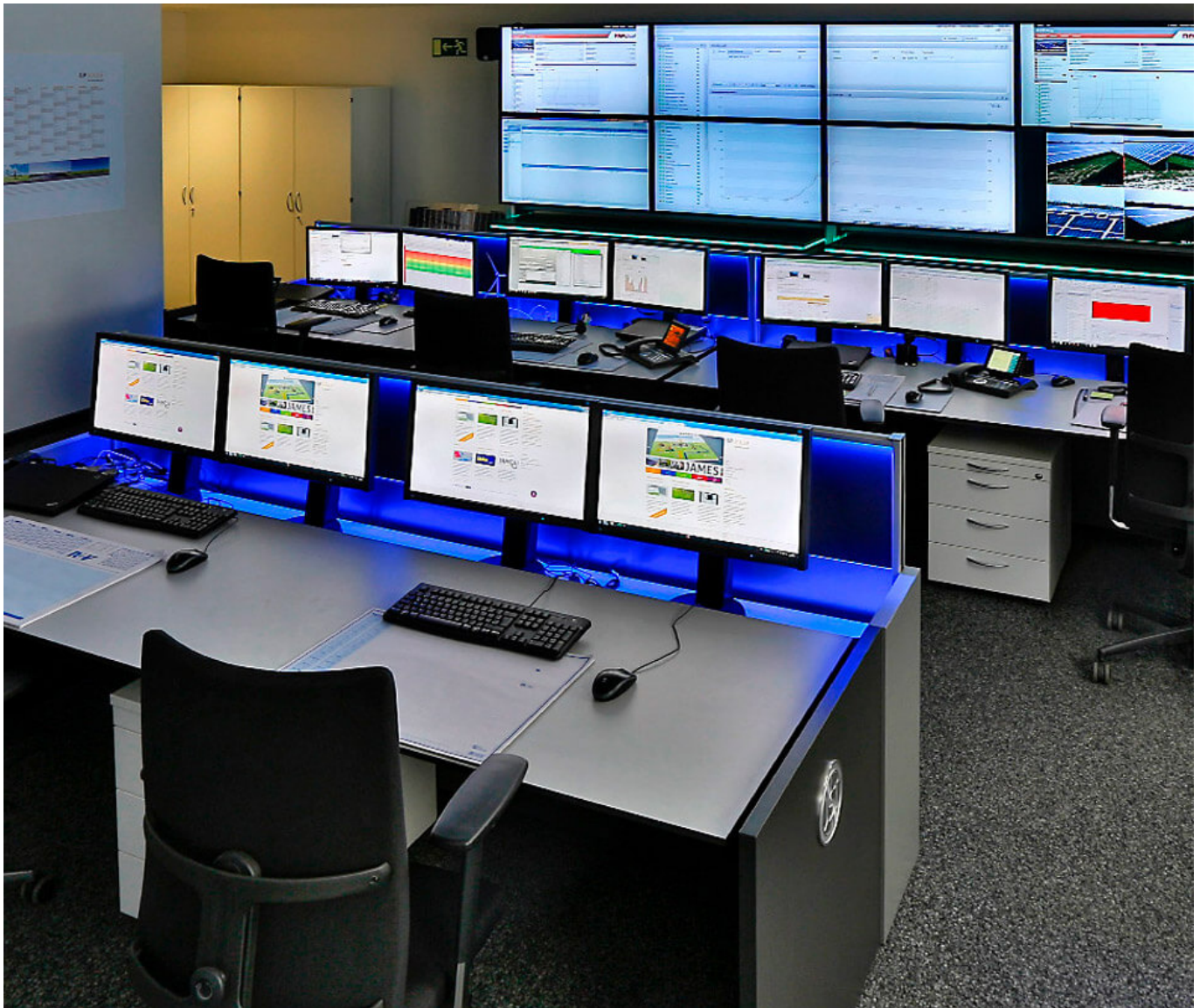


GP JOULE
Mit Energie gewinnen

"The technology we have at our disposal is first-class and offers optimal display capabilities."

Stefan Jensen

GP JOULE Service Manager



Innovative upgrade for power supply control center

“Electricity everywhere and at all times” – according to this guiding principle, around 160,000 so-called extraction points in and around Magdeburg are supplied with electricity. Responsible for this: Netze Magdeburg GmbH, a 100% subsidiary of Städtische Werke Magdeburg In order to remain true to this maxim at all times, the power supplier has now brought in a strong partner. With the support of Jungmann Systemtechnik GmbH, the power supply control center was extensively modernised.

GO TO PROJECT



NETZE
 **Magdeburg**

"That was really an excellent collaboration. Our individual wishes were met immediately. And also in retrospect I have to say that the entire system is very easy to maintain. There are no problems with the software or the technology. Really great!"

Karl-Ludwig Stephan

Project Manager



Target achieved with integrated control center

Electricity, gas, water, district heating and power generation – the range of tasks performed by the operators in the control center of Stadtwerke Gießen is extensive. The supply of around 150,000 inhabitants in the catchment area of the public utility company is controlled from there. It is particularly important that all “cogs fit together smoothly.” Dialogue among employees must take place without obstacles. To this end, the necessary technical and ergonomic conditions have now been created – with the support of the Jungmann Systemtechnik team.

GO TO PROJECT



"The entire collaboration we have had with JST can only be described as very professional – from perfect preparation to the end result."

Kai Timmermann

Head of the Power Supply Control Center



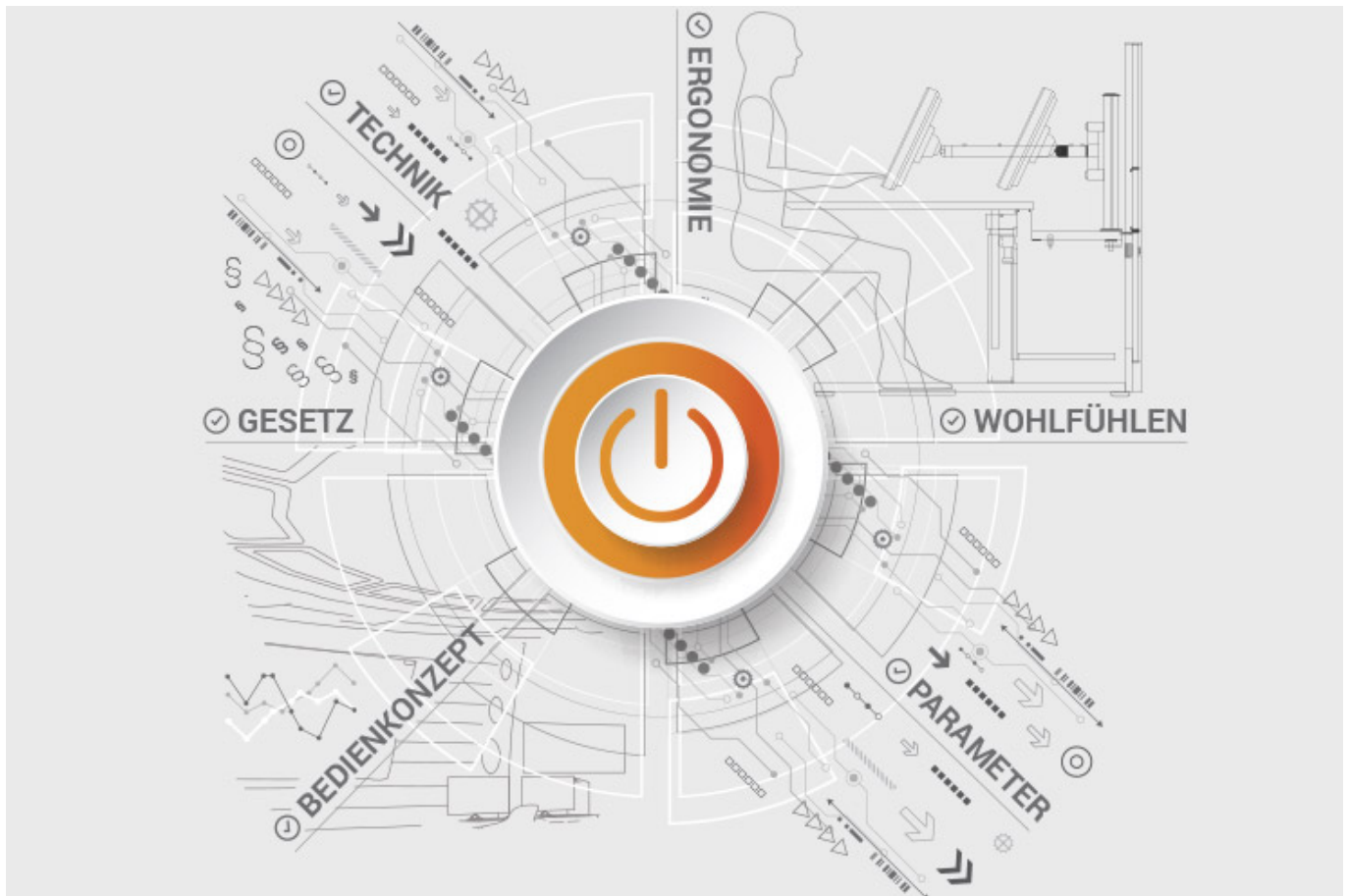
ALL PROJECTS

Documents for download

- [Project report on the new central measuring station of Infraleuna \(PDF\)](#)
- [Comfortable and intuitive system operation at DREWAG \(PDF\)](#)

JST product overview: Think of everything!

Modernise power supply control rooms with suitable components



Analysis and planning of your control room

Are you planning changes in your control room? Or would you like to breathe some fresh air into your control room? Then make use of the proven planning packages or the free online analysis from JST. Our experts will support you in accordance with BAUA: Study and all important standards and guidelines.

[More about the free analysis](#)



Large-display technology – react faster!

Proactively present important information to the right people – before an incident can have a major impact. With scalable large display walls based on LCD displays and Cube technology, we are sure to find the right large-format system for your 24/7 operation!

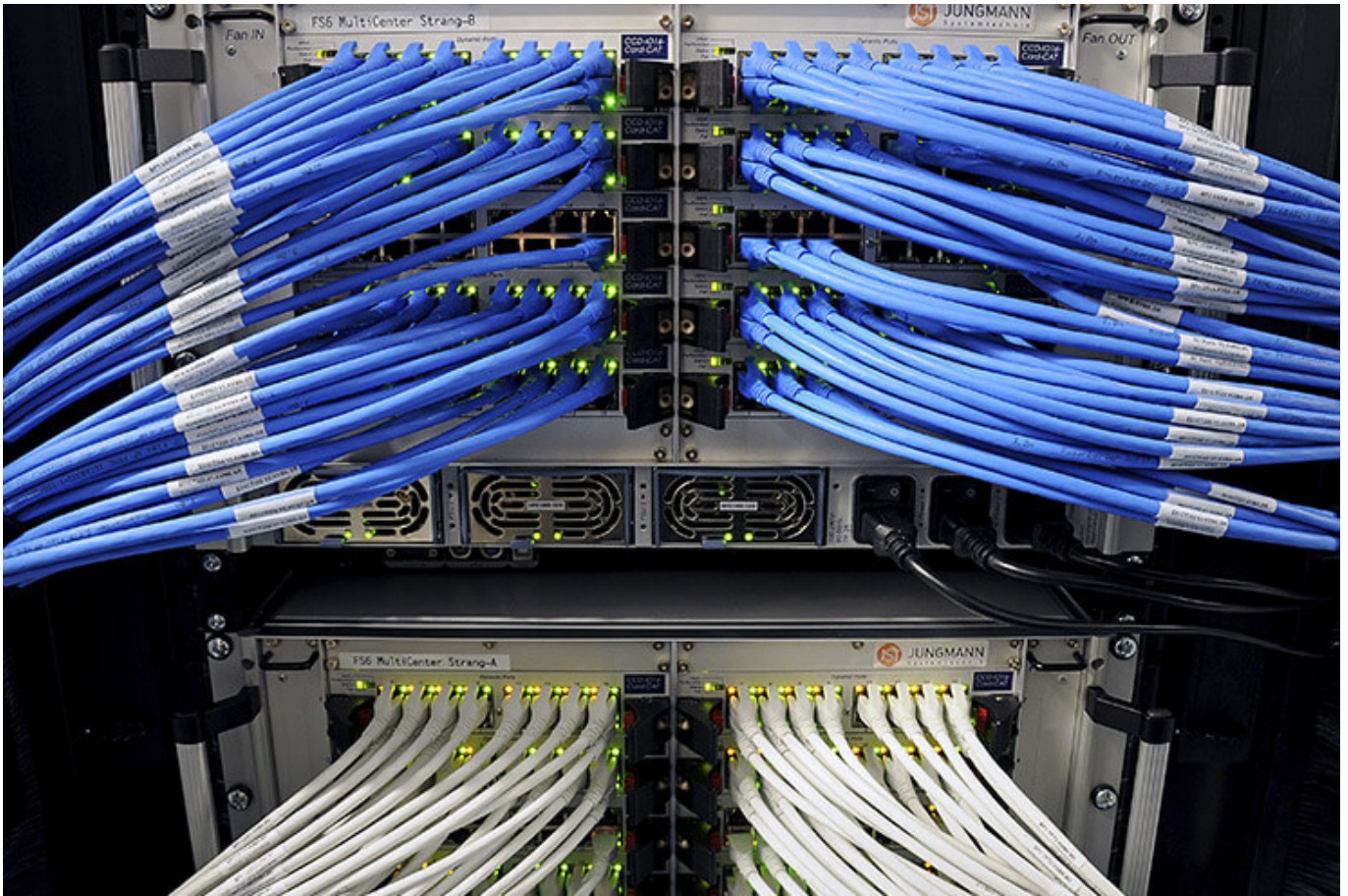
More about JST large-display technology



myGUI® – User interface for large-format system, workplace & infrastructure

The intuitive myGUI® user interface in the 3D layout of your control room offers maximum operating convenience for your MultiConsoling® system. With just one click you can operate workstations, monitor walls and infrastructure – always absolutely safe and excellent in stressful situations.

[More about myGUI®](#)



MultiConsoling® – The Control center control room

MultiConsoling® is the high-availability control center for connecting all of the signals from your systems to the monitors at the operator's workstation and on the monitor walls. Transmission takes place in real time and does not require any software on your computers.

[More about MultiConsoling®](#)



Control room furniture: ergonomic operator consoles, Recaro operator's chair, AllMedia Conference System

You can get furniture and technology from a single source at JST. The highly stable Stratos operator consoles, with height adjustment and suitable surrounding furniture, form an ergonomic base for your control room.

[More about control room furniture](#)



Large-screen control system with graphic controller

With the IP-based graphic controller you can get your monitor wall going. The graphic controller records all video signals over the IP network simultaneously and spreads them out at any position and in any scale on the large display wall.

[More about graphic controllers](#)



PixelDetection® – the operator's eye

Shorten your reaction times! With PixelDetection®, you will receive the right alarm at exactly the right moment and always be able to see an overview. Proven for many years and repeatedly awarded, PixelDetection® is also known as the “artificial eye of the operator”.

[More about PixelDetection®](#)



JST myLogin[®] – the operator's login

JST myLogin[®] is a revolutionary solution for logging on and off centrally and quickly from all operator workstations with your company ID. The login/logout process only takes a few moments. If you want, you can also save your personal layout of the screen contents.

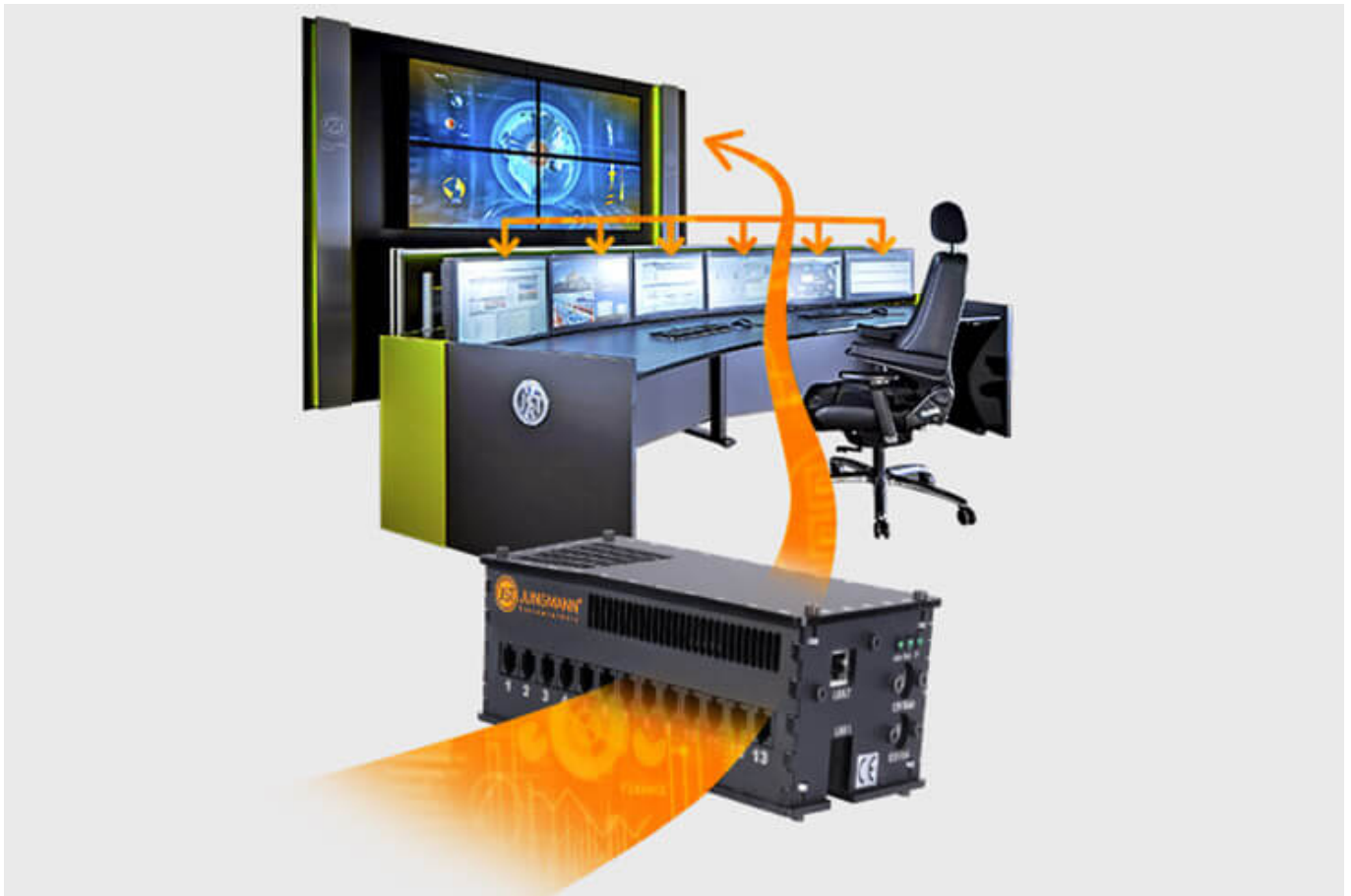
[More about myLogin[®]](#)



CockpitView – the operator’s dashboard

Create dashboards with content from different computers on different networks! CockpitView offers you the perfect overview of your most important applications at a glance. With CockpitView you can stay in control and reduce monitors at the workplace or even the large-format system.

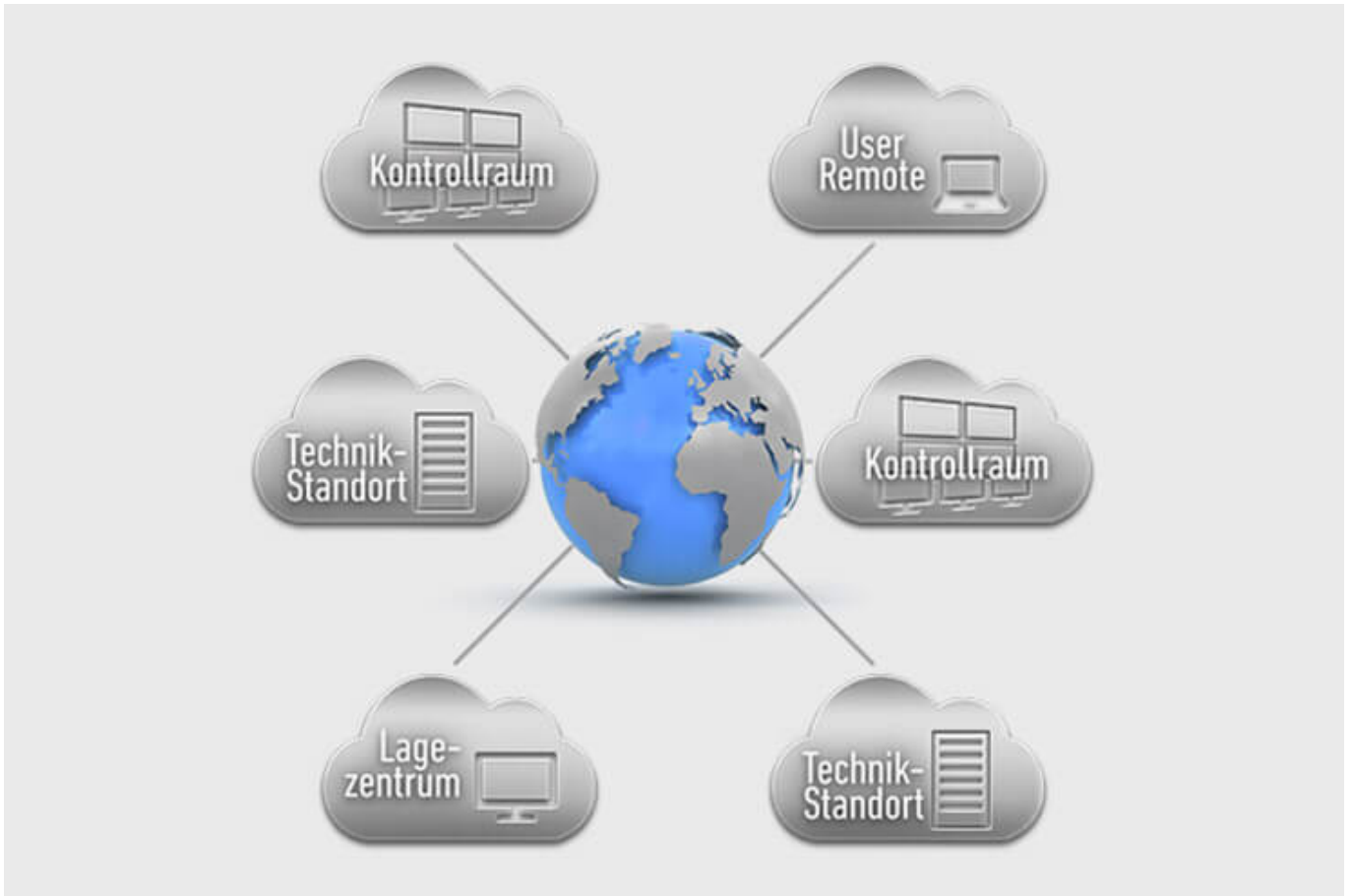
[More about CockpitView](#)



Automation for Videowalls and operator workstations

With the JST CommandBox, you can monitor circuits, relays, audio signals, and much more, and have them automatically switched on at defined workstations or on the monitor wall when critical values are detected. The range of applications is almost unlimited!

[More about ControlRoom Automation](#)



ControlRoom Remote: Connection of distributed systems and locations

The optional remote interface of JST Systems allows you to visualise and operate remote computers and entire control rooms. Even complex emergency scenarios for backup control rooms are feasible!

[More about ControlRoom Remote](#)



Computer relocation and PC remote control

By relocating computers from the control room to the technical room, you can reduce the thermal load and create more legroom for your employees. Additional advantages are the central administration of the computers as well as the physical access protection in the secured technical room.

[More about computer relocation](#)



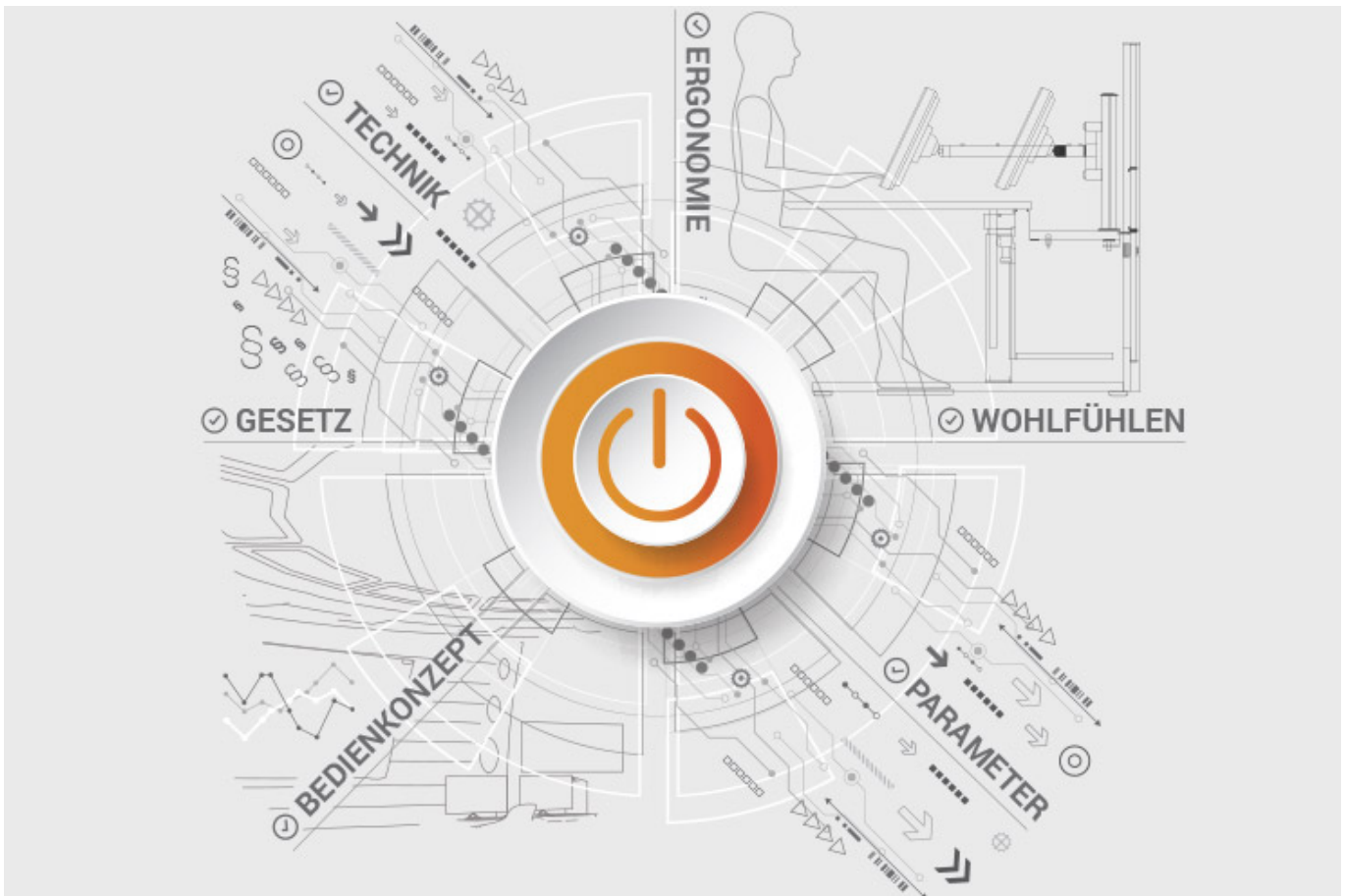
Optional service and maintenance packages

To ensure that your control room stays as available as you need it to be, we offer preventative maintenance packages in various scopes and forms. You will receive customised solutions that will support your market and competitive success.

[More about service from JST](#)

JST product overview: Think of everything!

Modernise power supply control rooms with suitable components



Analysis and planning of your control room

Are you planning changes in your control room? Or would you like to breathe some fresh air into your control room? Then make use of the proven [planning packages](#) or the free [online analysis](#) from JST. Our experts will support you in accordance with [BAUA: Study](#) and all important standards and guidelines.

[More about the free analysis](#)



Large-display technology – react faster!

Proactively present important information to the right people – before an incident can have a major impact. With scalable large display walls based on LCD displays and Cube technology, we are sure to find the right large-format system for your 24/7 operation!

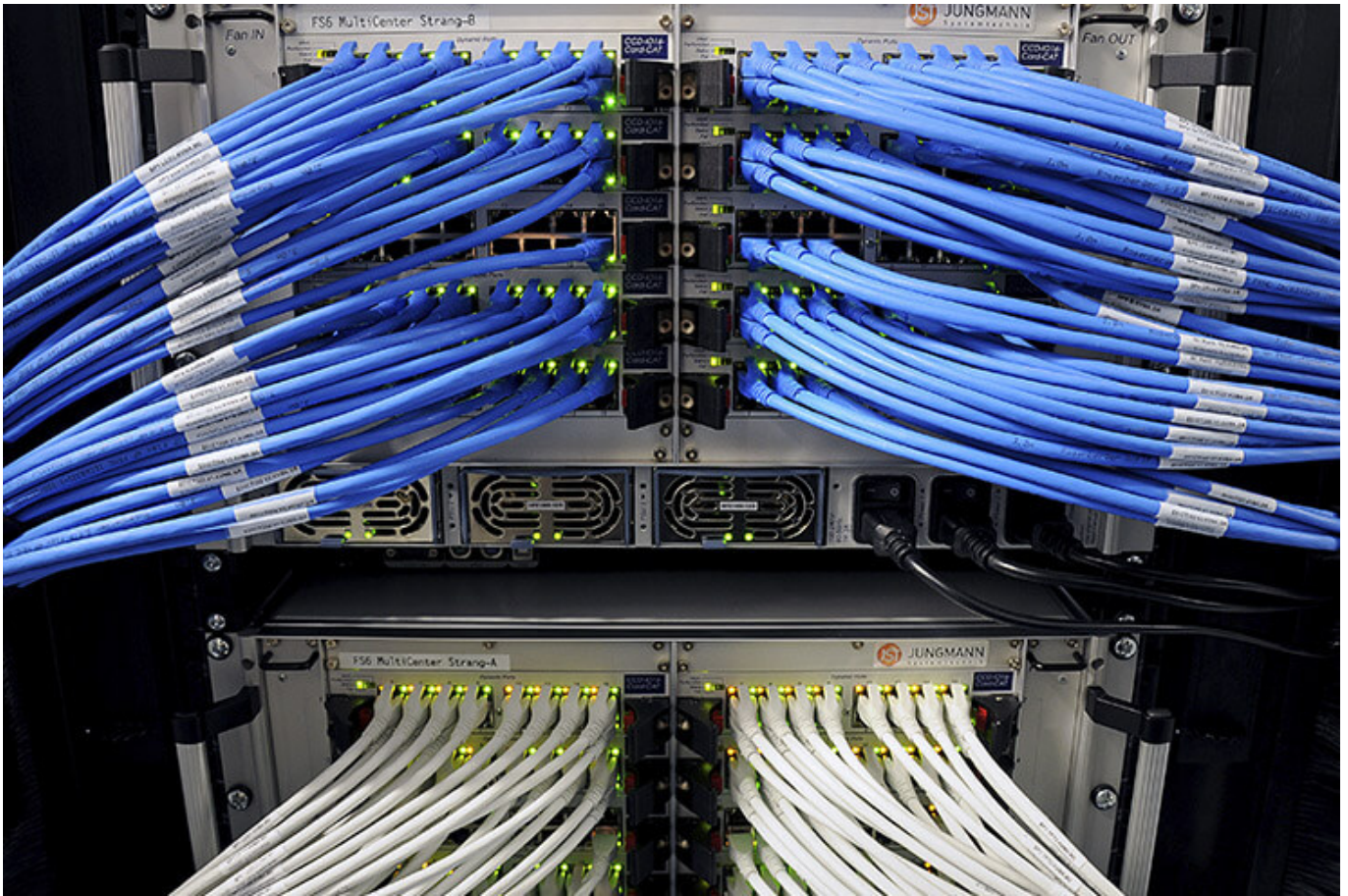
More about JST large-display technology



myGUI® – User interface for large-format system, workplace & infrastructure

The intuitive myGUI® user interface in the 3D layout of your control room offers maximum operating convenience for your MultiConsoling® system. With just one click you can operate workstations, monitor walls and infrastructure – always absolutely safe and excellent in stressful situations.

[More about myGUI®](#)



MultiConsoling® – The Control center control room

MultiConsoling® is the high-availability control center for connecting all of the signals from your systems to the monitors at the operator's workstation and on the monitor walls. Transmission takes place in real time and does not require any software on your computers.

[More about MultiConsoling®](#)



Control room furniture: ergonomic operator consoles, Recaro operator's chair, AllMedia Conference System

You can get furniture and technology from a single source at JST. The highly stable Stratos operator consoles, with height adjustment and suitable surrounding furniture, form an ergonomic base for your control room.

[More about control room furniture](#)



Large-screen control system with graphic controller

With the IP-based graphic controller you can get your monitor wall going. The graphic controller records all video signals over the IP network simultaneously and spreads them out at any position and in any scale on the large display wall.

[More about graphic controllers](#)



PixelDetection® – the operator's eye

Shorten your reaction times! With PixelDetection®, you will receive the right alarm at exactly the right moment and always be able to see an overview. Proven for many years and repeatedly awarded, PixelDetection® is also known as the “artificial eye of the operator”.

[More about PixelDetection®](#)



JST myLogin[®] – the operator's login

JST myLogin[®] is a revolutionary solution for logging on and off centrally and quickly from all operator workstations with your company ID. The login/logout process only takes a few moments. If you want, you can also save your personal layout of the screen contents.

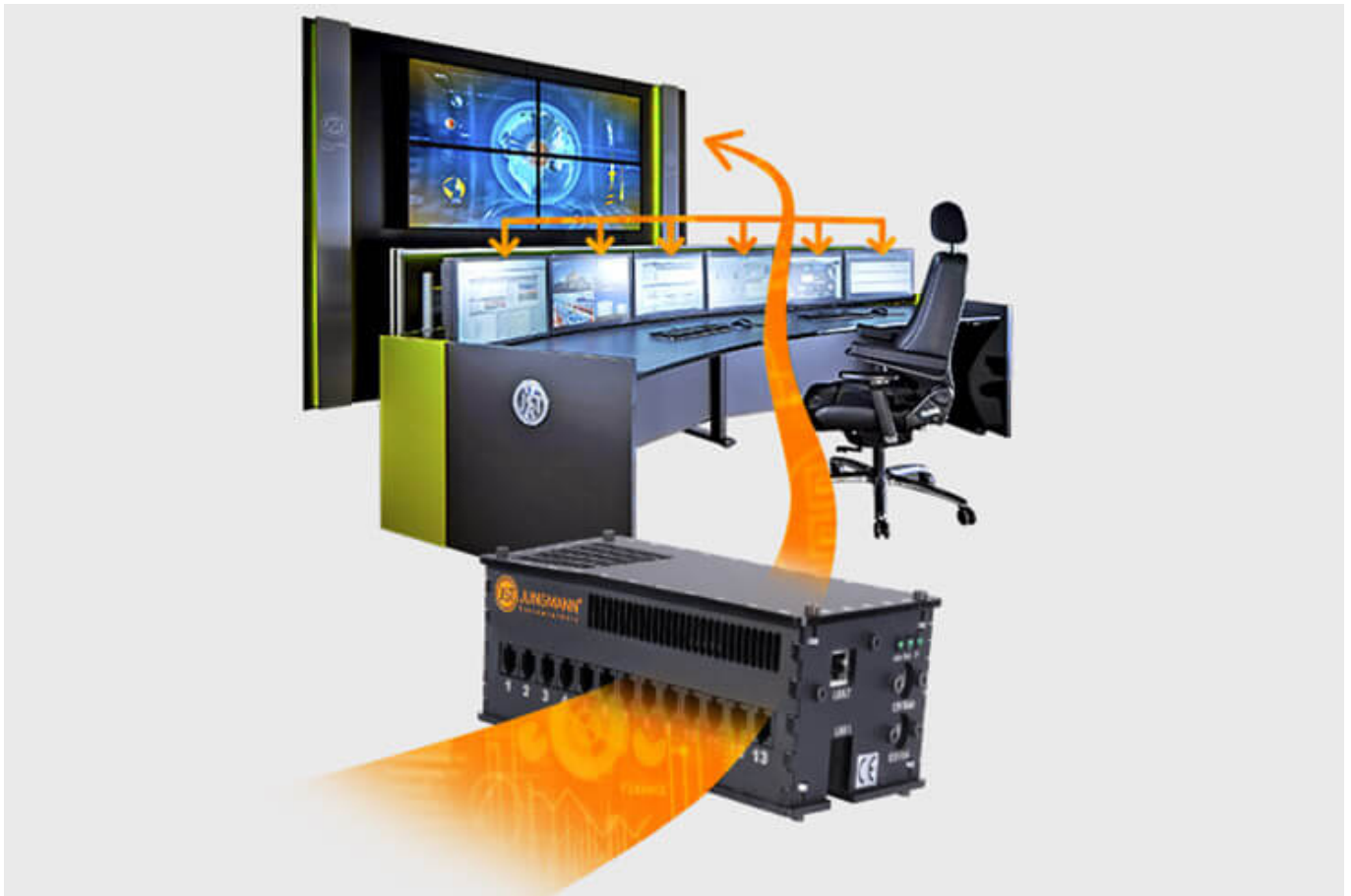
[More about myLogin[®]](#)



CockpitView – the operator’s dashboard

Create dashboards with content from different computers on different networks! CockpitView offers you the perfect overview of your most important applications at a glance. With CockpitView you can stay in control and reduce monitors at the workplace or even the large-format system.

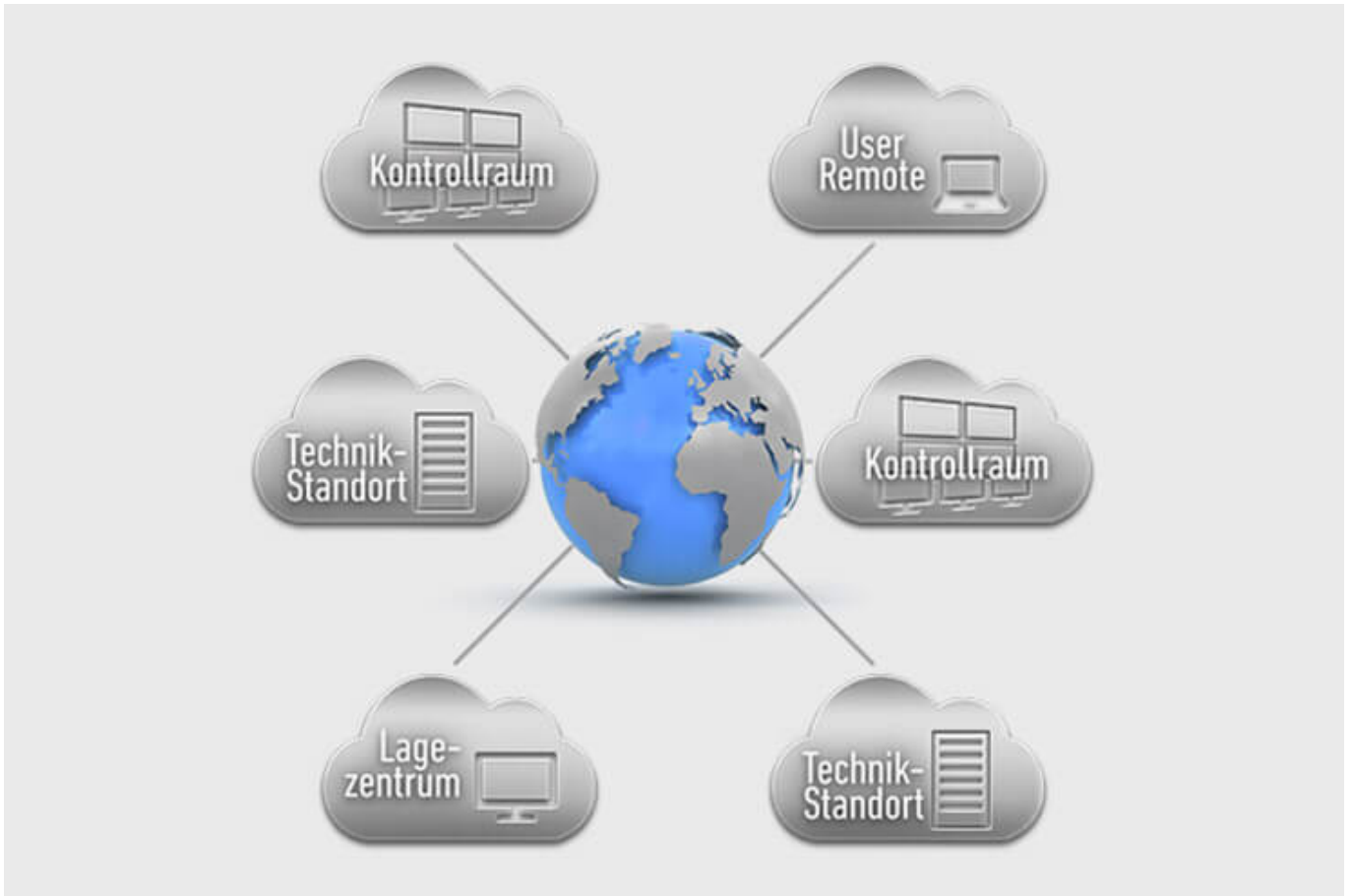
[More about CockpitView](#)



Automation for Videowalls and operator workstations

With the JST CommandBox, you can monitor circuits, relays, audio signals, and much more, and have them automatically switched on at defined workstations or on the monitor wall when critical values are detected. The range of applications is almost unlimited!

[More about ControlRoom Automation](#)



ControlRoom Remote: Connection of distributed systems and locations

The optional remote interface of JST Systems allows you to visualise and operate remote computers and entire control rooms. Even complex emergency scenarios for backup control rooms are feasible!

[More about ControlRoom Remote](#)



Computer relocation and PC remote control

By relocating computers from the control room to the technical room, you can reduce the thermal load and create more legroom for your employees. Additional advantages are the central administration of the computers as well as the physical access protection in the secured technical room.

[More about computer relocation](#)



Optional service and maintenance packages

To ensure that your control room stays as available as you need it to be, we offer preventative maintenance packages in various scopes and forms. You will receive customised solutions that will support your market and competitive success.

[More about service from JST](#)

Was möchten Sie als Nächstes tun?

Ich möchte

- [das kostenfreie Praxisbuch der Kontrollräume anfordern](#)
- [einen Rückruf für eine unverbindliche Beratung](#)
- [den Kontrollraum-Simulator in Buxtehude besuchen](#)
- [eine digitale 360°-Tour in einem Kontrollraum erleben](#)

- [mehr über Kontrollräume auf dem ko:mon Kongress erfahren](#)

We are happy to answer any questions you have regarding the modernisation of your power supply control room

0800-777 8 666

You are currently viewing a placeholder content from **YouTube**. To access the actual content, click the button below. Please note that doing so will share data with third-party providers.

[More Information](#)

[Unblock content](#) [Accept required service and unblock content](#)