

Manufacturing control room: technology, ergonomics and appearance

If you want to take your production control station to the next level, you've come to the right place at JST. With **intelligent and field-tested solutions for 24/7 operation**, you will not only have the production control station for manufacturing perfectly under control. But it will also reduce the workload on your employees and the **pleasant working atmosphere** will give them new motivation.

Whether you are looking for ergonomic **control room furniture** or new **monitor walls**, are planning a **new production control station** for your production facility or want to **modernise an existing one**. We provide comprehensive analysis, planning and advice according to your needs.

OFFER PRODUCTION CONTROL STATION FOR MANUFACTURING



**spenner
zement**

- Individual analysis of the requirements
- All stations under control at all times
- Short reaction times = fast action

- Optimal visualisation of all processes
- Control room furniture made in Germany
- Monitor walls for 24/7 operation



Practical examples: Production control station for manufacturing

JST Systemtechnik has a **great wealth of experience** in the planning and implementation of production control systems for different manufacturing and industries. Our know-how also includes the **consolidation and centralisation** of several control rooms into one central office. Our projects often end up becoming the **showpiece of large corporations**. We are particularly proud of this. Learn more about it in our exciting practical examples!

We will be happy to put you in touch with the appropriate contact person.

Europe's most state-of-the-art refinery measuring station successfully goes into operation

Every year, PCK Raffinerie GmbH processes around 12 million tonnes of crude oil into petroleum and petrochemical products. All production facilities were monitored and controlled via a central measuring station furnishing from 1993, which had become too small and unmanageable over the years. As a result, those responsible decided to replace it with an ultra-modern, approximately

1,000 m² control room. Jungmann Systemtechnik GmbH & Co. KG (JST) was entrusted with the interior design and technical equipment: In addition to six control stations with a total of 25 operator stations and 78 monitors, the control room experts also installed large display walls with 100 displays, which are used proactively to control the systems. A special MultiConsoling concept reduces monitors and reaction times, creates an overview and enables particularly efficient work.

GO TO PROJECT



"Compared to the satellite measuring stations and also to the old central measuring station, we have been able to improve in every aspect, be it acoustics, lighting, air conditioning, ergonomics or user-friendliness".

Eric Sieger, Thomas Taube, Carsten Jungmann (from left to right)

Chief Divisional Engineer for Processing (PCK) / Divisional Engineer for Maintenance Service and Project Coordinator (PCK) / Managing Director (JST)



Planning and installation of the new control room for the cement plant

It was a long way from the old mosaic picture technique to the presentation of all processes on the modern large display wall. With the support of the experts from Jungmann Systemtechnik, the Spenner Zement company was able to open its doors to technical progress in control technology. Four distributed operating and control stations were combined into a modern control room at the company headquarters in Erwitte, North Rhine-Westphalia.

GO TO PROJECT



spenner zement

"The whole package was really coherent, and we also really liked the dedication of the Jungmann employees."

Dr. Heinrich Sievers

Production Manager



Process control room constructed as the heart of the MVA - waste recovery plant

All operating and emissions data are collected by them, they check that the limit values are never exceeded, thus guaranteeing the highest safety standards: The operators in the new control room of Müllverwertungsanlage Bonn GmbH (MVA), a subsidiary of Stadtwerke Bonn, are responsible for monitoring all data and functions at the core of the plant. This important task is supported by products from Jungmann Systemtechnik – JST.

GO TO PROJECT



"Things are going great. The system has been very well received by colleagues."

Frank Nachtsheim

Plant Manager of MVA Bonn



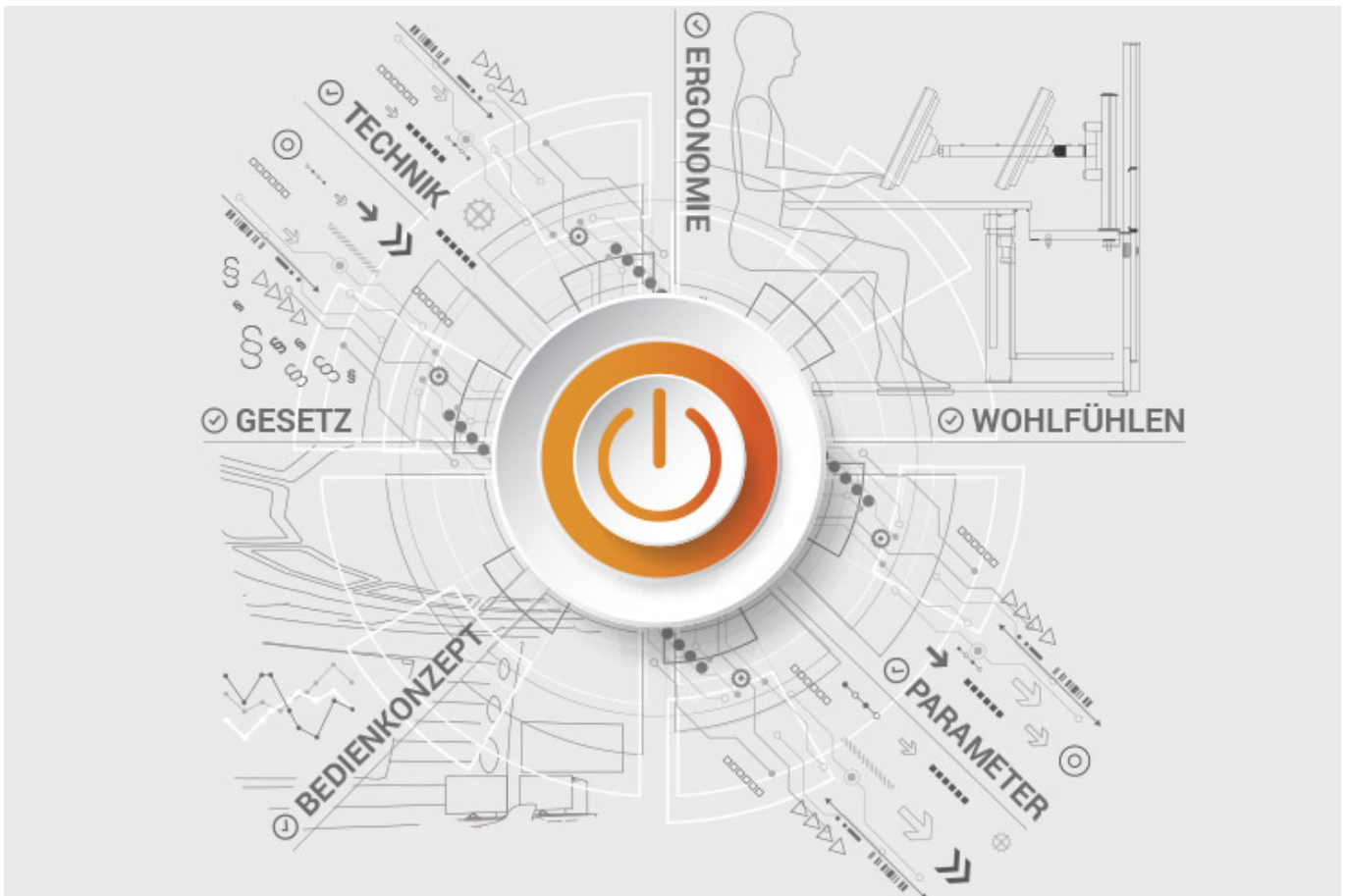
ALL PROJECTS

Documents for download

- [Project report on the new central control room of Infraleuna \(PDF\)](#)

JST product overview: Think of everything!

Production control station for manufacturing with suitable components



Analysis and planning of your control room

Are you planning changes in your control room? Or would you like to breathe some fresh air into your control room? Then make use of the proven [planning packages](#) or the free [online analysis](#) from JST. Our experts will support you in accordance with [BAUA: Study](#) and all important standards and guidelines.

[More about the free analysis](#)



Large-display technology – react faster!

Proactively present important information to the right people – before an incident can have a major impact. With scalable large display walls based on LCD displays and Cube technology, we are sure to find the right large-format system for your 24/7 operation!

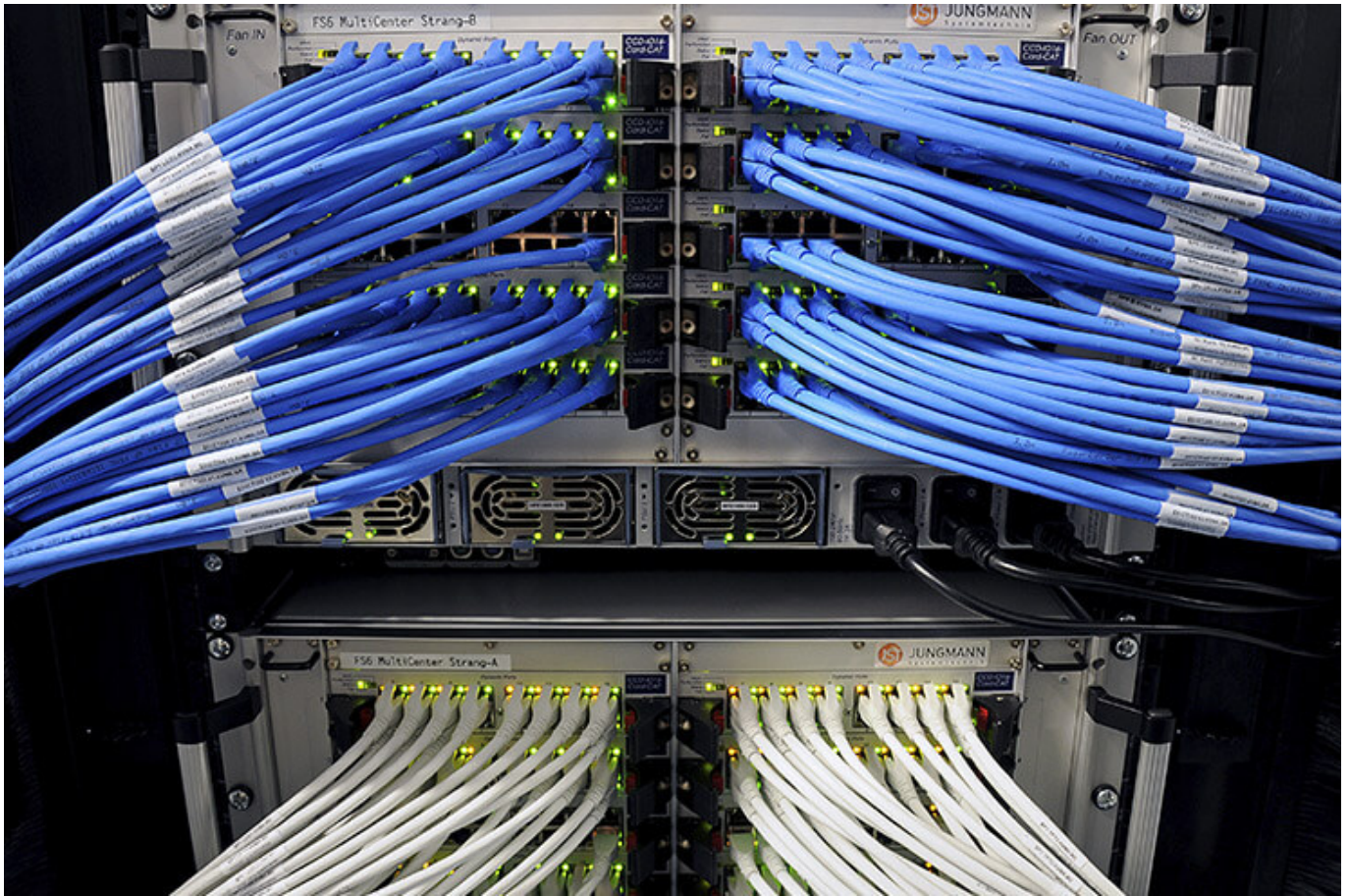
More about JST large-display technology



myGUI® – User interface for large-format system, workplace & infrastructure

The intuitive myGUI® user interface in the 3D layout of your control room offers maximum operating convenience for your MultiConsoling® system. With just one click you can operate workstations, monitor walls and infrastructure – always absolutely safe and excellent in stressful situations.

[More about myGUI®](#)



MultiConsoling[®] – The Control center control room

MultiConsoling[®] is the high-availability control center for connecting all of the signals from your systems to the monitors at the operator's workstation and on the monitor walls. Transmission takes place in real time and does not require any software on your computers.

[More about MultiConsoling[®]](#)



Control room furniture: ergonomic operator consoles, Recaro operator's chair, AllMedia Conference System

You can get furniture and technology from a single source at JST. The highly stable Stratos operator consoles, with height adjustment and suitable surrounding furniture, form an ergonomic base for your control room.

[More about control room furniture](#)



Large-screen control system with graphic controller

With the IP-based graphic controller you can get your monitor wall going. The graphic controller records all video signals over the IP network simultaneously and spreads them out at any position and in any scale on the large display wall.

[More about graphic controllers](#)



PixelDetection® – the operator's eye

Shorten your reaction times! With PixelDetection®, you will receive the right alarm at exactly the right moment and always be able to see an overview. Proven for many years and repeatedly awarded, PixelDetection® is also known as the “artificial eye of the operator”.

[More about PixelDetection®](#)



JST myLogin[®] – the operator's login

JST myLogin[®] is a revolutionary solution for logging on and off centrally and quickly from all operator workstations with your company ID. The login/logout process only takes a few moments. If you want, you can also save your personal layout of the screen contents.

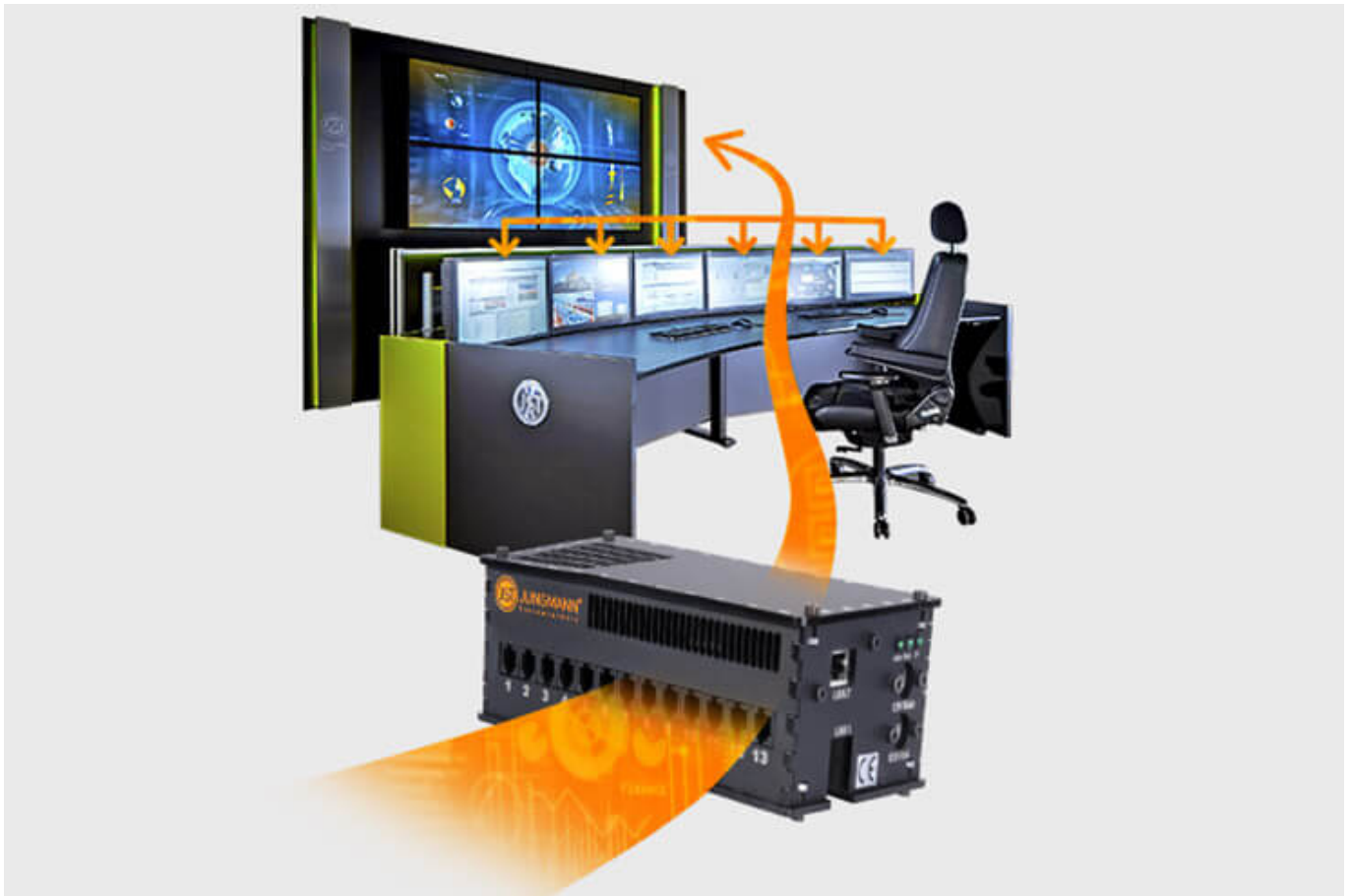
[More about myLogin[®]](#)



CockpitView – the operator’s dashboard

Create dashboards with content from different computers on different networks! CockpitView offers you the perfect overview of your most important applications at a glance. With CockpitView you can stay in control and reduce monitors at the workplace or even the large-format system.

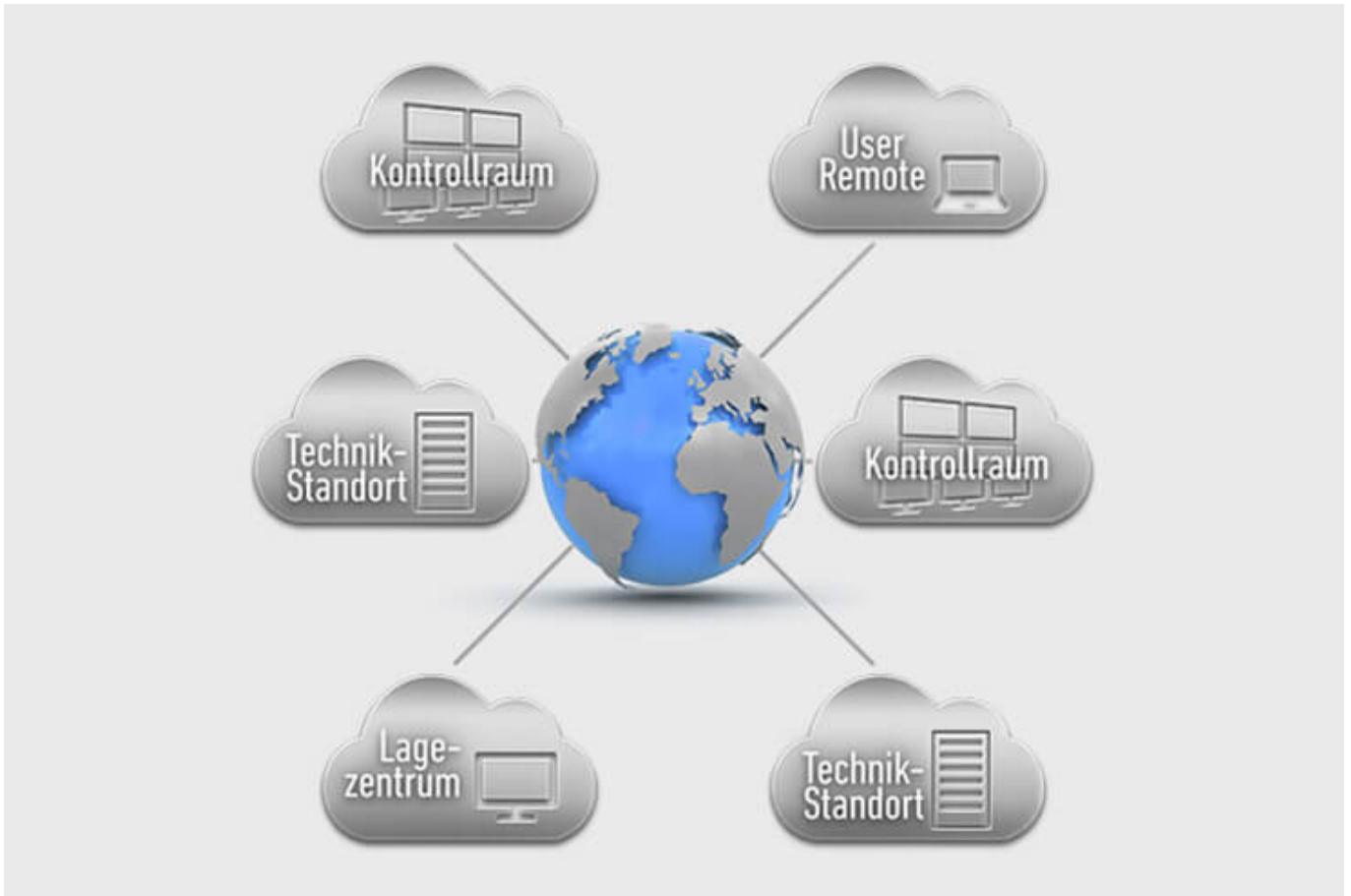
[More about CockpitView](#)



Automation for Videowalls and operator workstations

With the JST CommandBox, you can monitor circuits, relays, audio signals, and much more, and have them automatically switched on at defined workstations or on the monitor wall when critical values are detected. The range of applications is almost unlimited!

[More about ControlRoom Automation](#)



ControlRoom Remote: Connection of distributed systems and locations

The optional remote interface of JST Systems allows you to visualise and operate remote computers and entire control rooms. Even complex emergency scenarios for backup control rooms are feasible!

[More about ControlRoom Remote](#)



Computer relocation and PC remote control

By relocating computers from the control room to the technical room, you can reduce the thermal load and create more legroom for your employees. Additional advantages are the central administration of the computers as well as the physical access protection in the secured technical room.

[More about computer relocation](#)



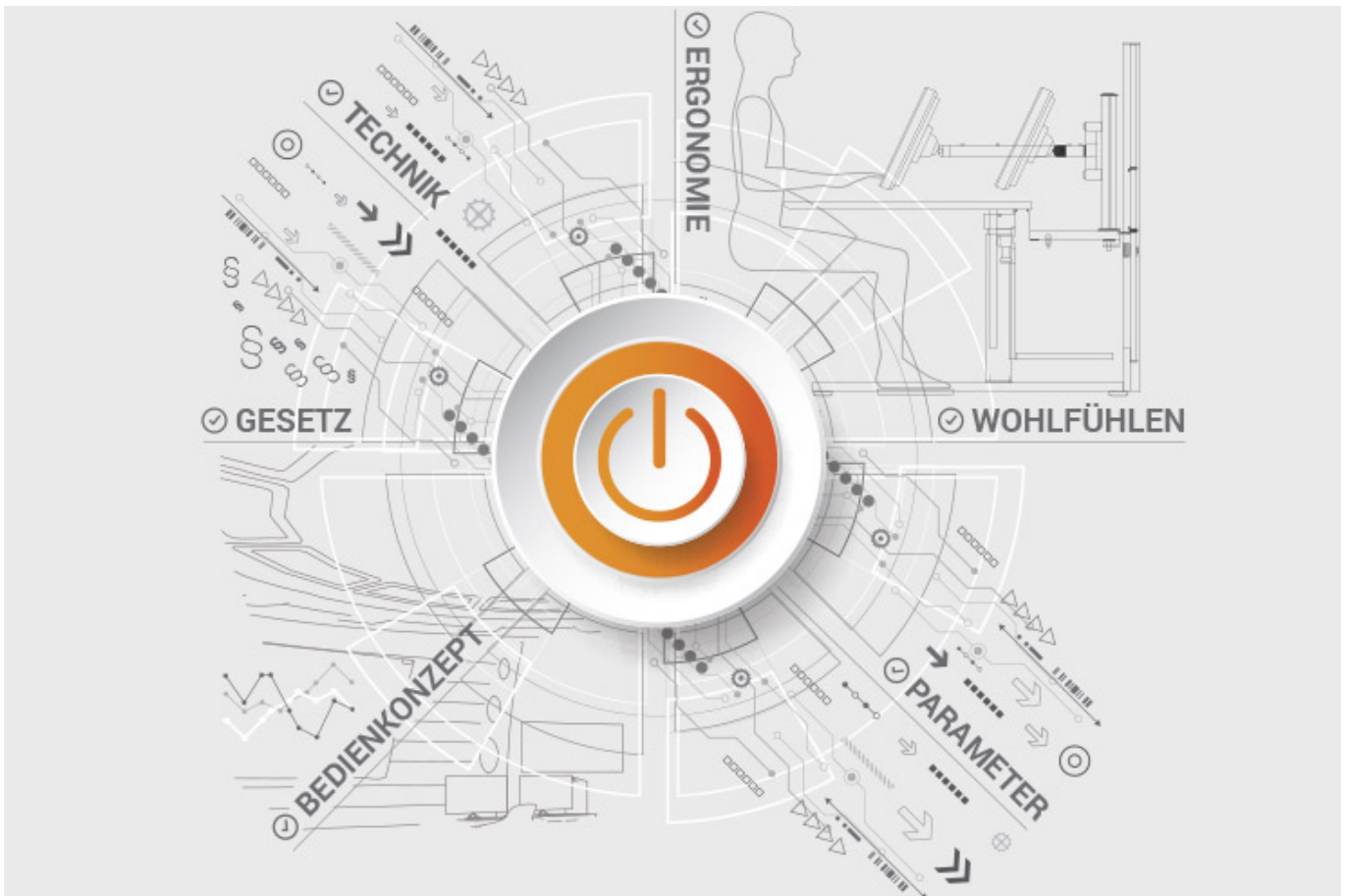
Optional service and maintenance packages

To ensure that your control room stays as available as you need it to be, we offer preventative maintenance packages in various scopes and forms. You will receive customised solutions that will support your market and competitive success.

[More about service from JST](#)

JST product overview: Think of everything!

Production control station for manufacturing with suitable components



Analysis and planning of your control room

Are you planning changes in your control room? Or would you like to breathe some fresh air into your control room? Then make use of the proven [planning packages](#) or the free [online analysis](#) from JST. Our experts will support you in accordance with [BAUA: Study](#) and all important standards and guidelines.

[More about the free analysis](#)



Large-display technology – react faster!

Proactively present important information to the right people – before an incident can have a major impact. With scalable large display walls based on LCD displays and Cube technology, we are sure to find the right large-format system for your 24/7 operation!

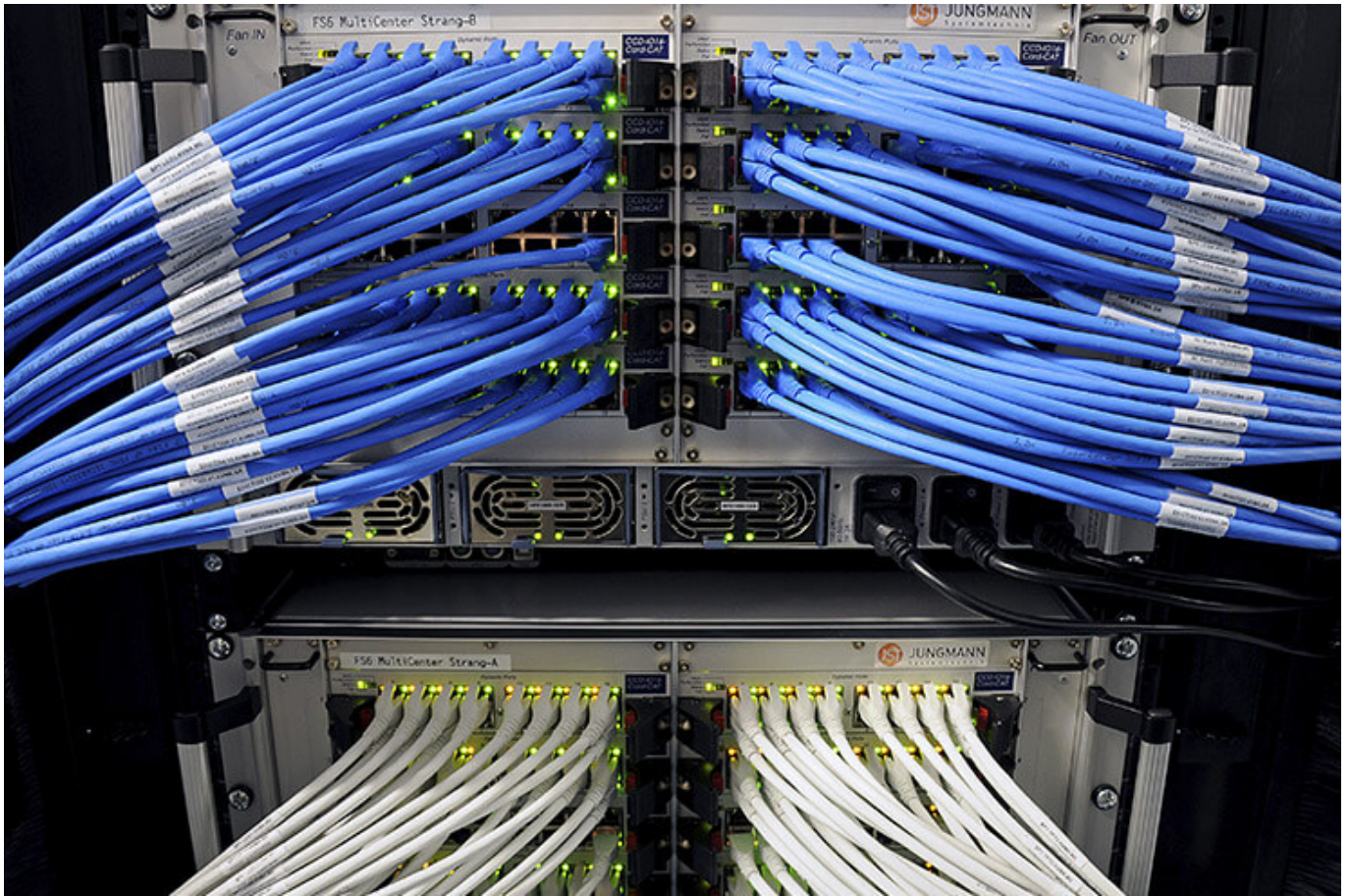
More about JST large-display technology



myGUI® – User interface for large-format system, workplace & infrastructure

The intuitive myGUI® user interface in the 3D layout of your control room offers maximum operating convenience for your MultiConsoling® system. With just one click you can operate workstations, monitor walls and infrastructure – always absolutely safe and excellent in stressful situations.

[More about myGUI®](#)



MultiConsoling® – The Control center control room

MultiConsoling® is the high-availability control center for connecting all of the signals from your systems to the monitors at the operator's workstation and on the monitor walls. Transmission takes place in real time and does not require any software on your computers.

[More about MultiConsoling®](#)



Control room furniture: ergonomic operator consoles, Recaro operator's chair, AllMedia Conference System

You can get furniture and technology from a single source at JST. The highly stable Stratos operator consoles, with height adjustment and suitable surrounding furniture, form an ergonomic base for your control room.

[More about control room furniture](#)



Large-screen control system with graphic controller

With the IP-based graphic controller you can get your monitor wall going. The graphic controller records all video signals over the IP network simultaneously and spreads them out at any position and in any scale on the large display wall.

[More about graphic controllers](#)



PixelDetection® – the operator's eye

Shorten your reaction times! With PixelDetection®, you will receive the right alarm at exactly the right moment and always be able to see an overview. Proven for many years and repeatedly awarded, PixelDetection® is also known as the “artificial eye of the operator”.

[More about PixelDetection®](#)



JST myLogin® – the operator's login

JST myLogin® is a revolutionary solution for logging on and off centrally and quickly from all operator workstations with your company ID. The login/logout process only takes a few moments. If you want, you can also save your personal layout of the screen contents.

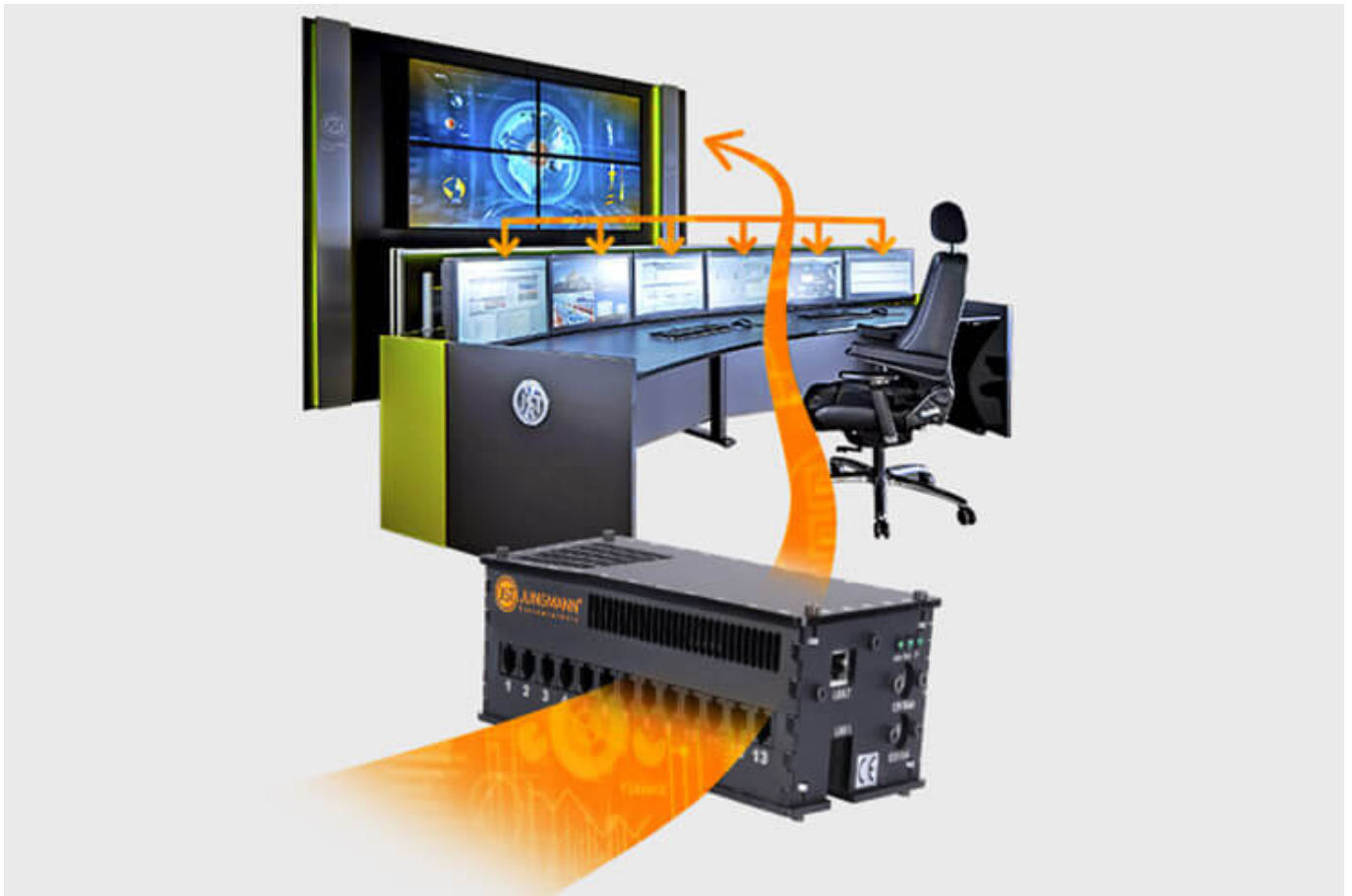
[More about myLogin®](#)



CockpitView – the operator’s dashboard

Create dashboards with content from different computers on different networks! CockpitView offers you the perfect overview of your most important applications at a glance. With CockpitView you can stay in control and reduce monitors at the workplace or even the large-format system.

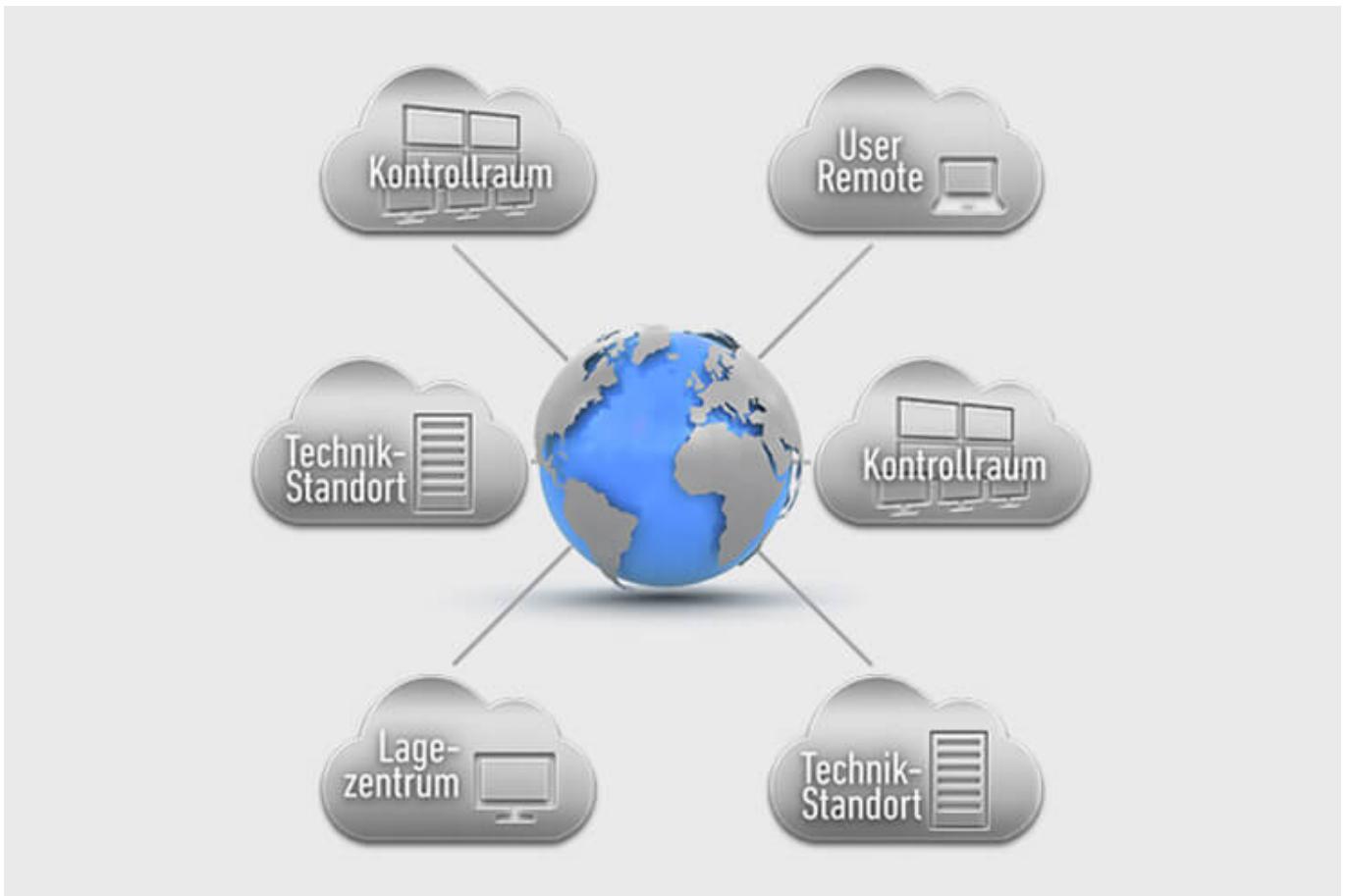
[More about CockpitView](#)



Automation for Videowalls and operator workstations

With the JST CommandBox, you can monitor circuits, relays, audio signals, and much more, and have them automatically switched on at defined workstations or on the monitor wall when critical values are detected. The range of applications is almost unlimited!

[More about ControlRoom Automation](#)



ControlRoom Remote: Connection of distributed systems and locations

The optional remote interface of JST Systems allows you to visualise and operate remote computers and entire control rooms. Even complex emergency scenarios for backup control rooms are feasible!

[More about ControlRoom Remote](#)



Computer relocation and PC remote control

By relocating computers from the control room to the technical room, you can reduce the thermal load and create more legroom for your employees. Additional advantages are the central administration of the computers as well as the physical access protection in the secured technical room.

[More about computer relocation](#)



Optional service and maintenance packages

To ensure that your control room stays as available as you need it to be, we offer preventative maintenance packages in various scopes and forms. You will receive customised solutions that will support your market and competitive success.

[More about service from JST](#)

Was möchten Sie als Nächstes tun?

Ich möchte

- [das kostenfreie Praxisbuch der Kontrollräume anfordern](#)
- [einen Rückruf für eine unverbindliche Beratung](#)
- [den Kontrollraum-Simulator in Buxtehude besuchen](#)
- [eine digitale 360°-Tour in einem Kontrollraum erleben](#)

- [mehr über Kontrollräume auf dem ko:mon Kongress erfahren](#)

We are happy to answer your questions on the subject of production control stations for manufacturing

0800-777 8 666

You are currently viewing a placeholder content from **YouTube**. To access the actual content, click the button below. Please note that doing so will share data with third-party providers.

[More Information](#)

[Unblock content](#) [Accept required service and unblock content](#)