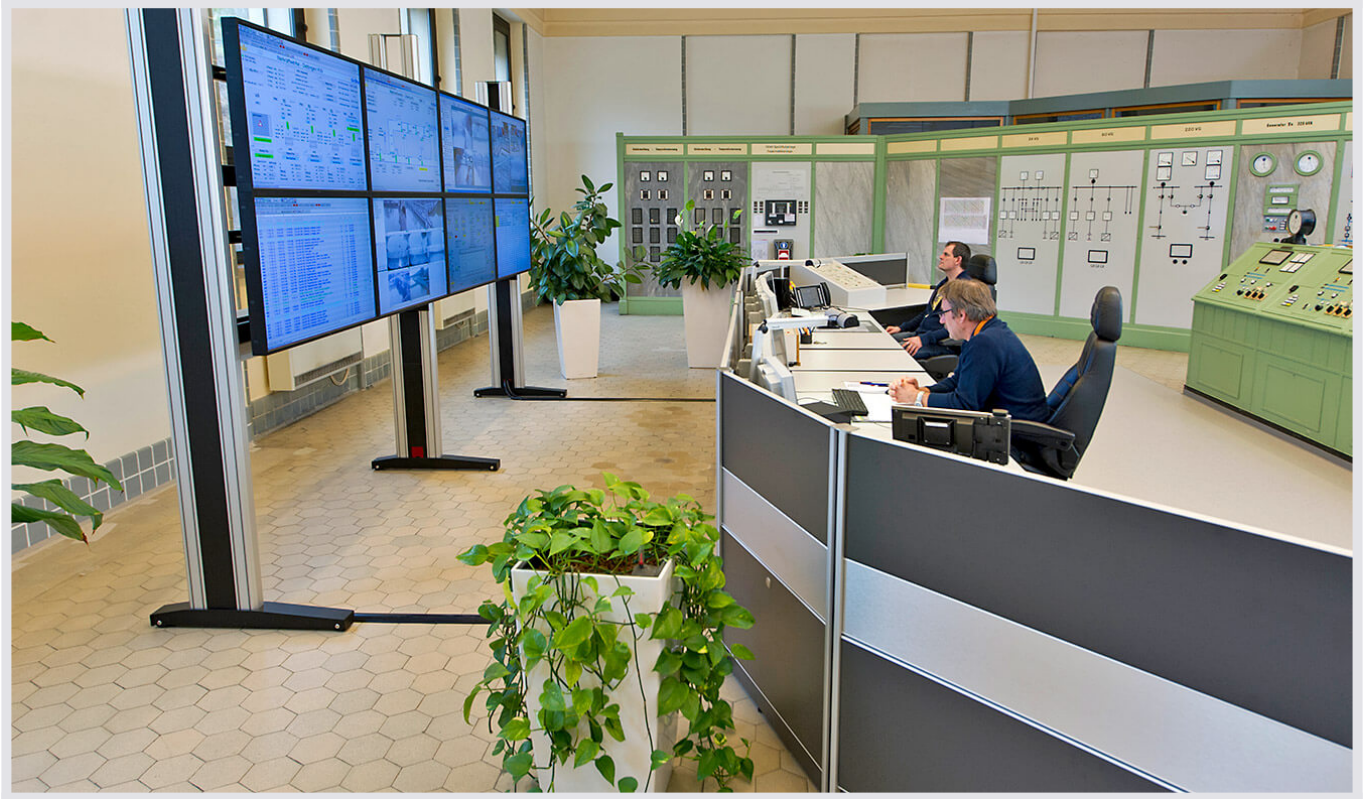


Client:

— EnBW

Kategorie: Switch room, Critical infrastructures.

Optimized ergonomics for control center drivers



JST control center: Modern technology meets control consoles and displays from the 1960s in the rooms of EnBW Erneuerbare und Konventionelle Erzeugung AG.

Increased control and tax expenditure, expansion of tasks and a growing number of monitors – in the control center of the Rudolf-Fettweis-Werk hydroelectric power plant of EnBW Erneuerbare und Konventionelle Erzeugung AG, the increasing demands on employees have been taken into account. New technology and extensive furniture from JST – Jungmann Systemtechnik® set new standards in ergonomics.

“We were fortunate to be able to inspect a Jungmann project in the computer center of EnBW Systeme Infrastruktur Support GmbH,” reports Jürgen Reichert. Exactly these installations, which the team of JST already realised some years ago under the roof of the EnBW group, could also convince the project manager of EnBW Erneuerbare und Konventionelle Erzeugung AG.

By means of 3-D planning not only the decision makers for the new project could be won over, but also the employees were significantly involved in the development process of the new control center through visualisation. 14 drivers of the control center, which is manned around the clock, benefit from the optimisations made. Individually and continuously height-adjustable control center desks create ideal working conditions. A large display wall provides maximum overview of the monitoring and control tasks in the control center of the Rudolf Fettweis factory.



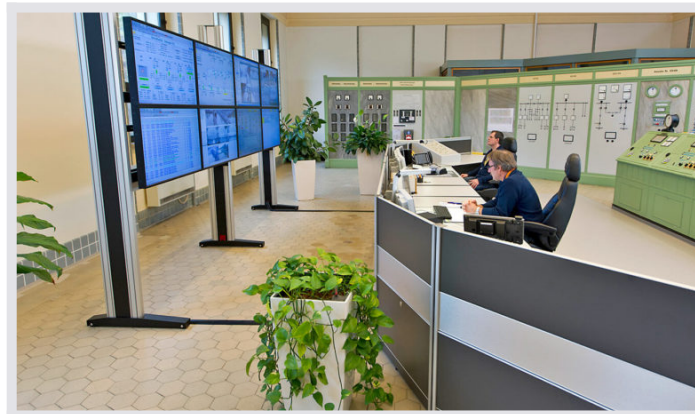
JST control center table: The upper rear wall panels of the Stratos control center desks are equipped with magnetic decorative strips
JST furniture: A custom-made product from JST – a radio was integrated into the centrally placed storage container at the customer's request





JST Displayrack: The displays can be continuously adjusted vertically and horizontally. The advantage: an exact joint pattern on the front side.

JST custom made: Mobile low and highboards for various printer technology were individually manufactured according to customer requirements



JST Highboards: Mobile highboards with doors and drawers were also made for the storage of various documents



Die EnBW Erneuerbare und Konventionelle Erzeugung AG

EnBW Erneuerbare und Konventionelle Erzeugung AG operates the majority of the EnBW power plant park. The company's own and partly owned power plants, shareholdings and long-term power plant purchase agreements ensure an efficient and environmentally friendly generation mix of nuclear, coal, gas, hydro, wind and other renewable energy sources. Its main tasks are the production of electricity and district heating, the thermal treatment of waste and engineering services in the power plant sector. More than 3,700 people are employed by **EnBW Erneuerbare und Konventionelle Erzeugung AG** and EnBW Kernkraft GmbH.



"We were lucky to be able to examine a project of the Jungmann company in the data center of EnBW Systeme Infrastruktur Support GmbH"

Jürgen Reichert
Project Manager

REQUEST AN OFFER WITHOUT OBLIGATION

The components used in this project:



DisplayWall with special S-PVA panels for reliable 24/7 operation - optional with proactive alarm function



Stratos X11® control room desk – optional with height adjustment and proactive AlarmLight system

Planning

Other projects with a similar task



Städtische Werke Magdeburg



Find out more



GEW Wilhelmshaven



[Find out more](#)



Volkswagen Kraftwerk GmbH, Wolfsburg

Volkswagen Kraftwerk GmbH

[Find out more](#)
