

Client:

STADTWERKE STEINBURG
Stadtwerke Glückstadt, Itzehoe, Wilsener und Brunsbüttel

Kategorie: Switch room, Critical infrastructures.

Municipal utility association sets standards with new network control center



JST control room concept: Concentrated work in an environment that is not only technically state of the art, but also takes into account current ergonomic standards: With the new network control center, Stadtwerke Steinburg GmbH fulfills all requirements for modern workplaces in CRITIS control rooms.

Bundling technical and commercial tasks under one roof, exploiting synergy effects, for more efficient network operation, improved processes and more favorable conditions – these are some of the declared goals of Stadtwerke Steinburg. Around 79,000 households are supplied. Electricity, gas, water, district heating – the lifelines of the region have one hub: the network control center.

Modernization was consciously promoted

“Because we are one of the critical infrastructures, the topic of ‘network control center’ has become increasingly important in recent years due to the integration of new plants,” reports René Qurk, division

manager for network management, “so we pushed ahead with a modernization of our control center.” Technology, which no longer met the growing demands and a furnishing that disregarded ergonomic principles, were among his points of criticism. Martin Krüger, head of the control center, shares a similar view: “We used to have a separate PC for each system. That meant we had to constantly log on again, often changing workstations. Efficiency looks different.”

"Right from the start fan of the project"

Together with teammates and project manager Rolf Weihausen, those responsible took a close look at the market, considered experiences from other control centers, and finally visited the control room simulator from Jungmann Systemtechnik. “What was presented to us there made me a fan of the project right from the start,” recalls René Quirk. “Together, we developed a concept specifically tailored to the needs of Stadtwerke Steinburg,” explains JST consultant Dirk Lüders, “keeping within budget and schedule were important aspects.”

Shown in practice the real benefits

Ergonomic control room consoles, a state-of-the-art DisplayWall and the intuitive MultiConsoling® control system pave the way to the future at the Steinburg network control center. “With MultiConsoling®, the formerly time-consuming operating steps are a thing of the past. Today, every operator uses just a single mouse/keyboard unit with which he can call up all applications anywhere – and thanks to MouseHopping, it is even possible to switch from the workstation screen to the large screen wall without any problems,” Martin Krüger reports from practical experience.

Network control center before and after the renovation.

Systems of the network control center also in the crisis room

In the newly equipped crisis room, it is also possible during special situations or meetings to connect and operate the network control center systems on a separate video wall. The AllMedia Conference system offers direct access thanks to integrated MultiConsoling® technology. René Quirk: “This is extremely convenient and has the great advantage that work in the control center can continue without disruption.”

"All expectations fulfilled with star rating!"

“Trouble-free” is also the word Division Manager Quirk cites for working with the team at JST: “All expectations were fulfilled with a ‘star rating’. This was really a very nice project in every respect.”



"What was presented to us in the control room simulator made me a fan of the project from the start"

René Quurk (left) // Rolf Weihausen

Division Manager Network Management // Project Manager

REQUEST AN OFFER WITHOUT OBLIGATION

The components used in this project:



DisplayWall with special S-PVA panels for reliable 24/7 operation - optional with proactive alarm function



MultiConsoling® System – complete control room system for workplace, monitor wall and other systems



myGUI® user interface - in the intuitive 3D design of your control room for maximum user comfort



Stratos X11® control room desk – optional with height adjustment and proactive AlarmLight system



24/7 Recaro operator chair – optional with seat surface extension

AllMedia conference table system – with multifunctional application possibilities

ControlRoom-Automation – secure and fast processing of alarms

JST GrabberVM® system – convenient integration of virtual machines

PSM Proaktives System Monitoring – monitoring of all devices based on permanent status and diagnostic data

Other projects with a similar task

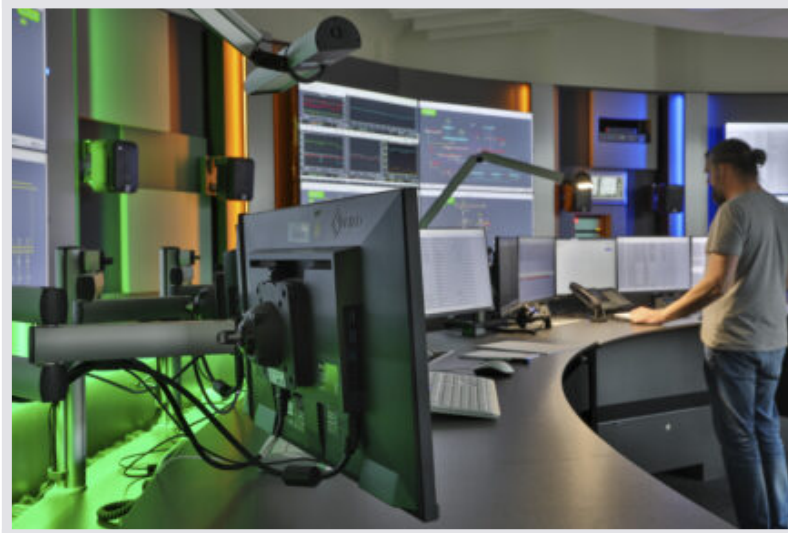


ovag Netz GmbH, Bad Nauheim

ovag Netz

Planung. Bau. Betrieb.

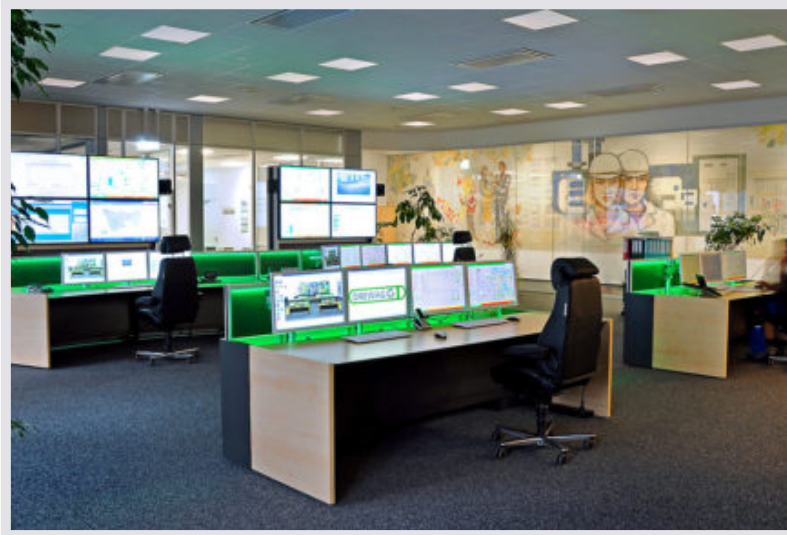
[Find out more](#)



TraveNetz, Lübeck

TRAVE.NETZ

[Find out more](#)



DREWAG GmbH, Dresden



[Find out more](#)
