

Client:



Kategorie: Switch room, Critical infrastructures.

## New control center controls and monitors wind turbines worldwide



JST control room: Perfect design paired with trend-setting technology - the new control center at the Bremen headquarters of wpd Windmanager GmbH & Co. KG benefits from a carefully thought-out room concept, functional planning and proactive visualisation of the various systems.

Whether weather data on a world map, detailed electrical circuit diagrams or various camera displays – with the new JST video wall the employees of the Bremen control center of wpd windmanager Windenergieanlagen have a close eye on wind turbines around the globe. As a specialist in the field of commercial and technical management of onshore and offshore wind farms, the company has moved into completely new headquarters in Bremen, which also houses the control center and first level support with new equipment from JST – Jungmann Systemtechnik®.

With a constantly increasing number of turbines to be monitored, the number of employees at wpd windmanager has grown steadily in recent years – reason enough to commission a completely new control center as part of the new headquarters building. Marc Rosenkranz, responsible for the management of the control center and first level: “Jungmann was our first choice in the search for a suitable partner for this

project". The company had already had positive experiences with various JST products in the past. "The cooperation has proven itself," says Marc Rosenkranz. A workshop in the control room simulator, during which a first virtual tour through the new control center was already realised, finally tipped the scales for further cooperation.

A total of 2,550 wind turbines worldwide are currently monitored from Bremen. Proactive large display walls from the JST portfolio and the JST PixelDetection® fault detection software to shorten reaction times keep the 14 dispatchers in the control center permanently informed. Status messages and warnings are detected as quickly as possible in this way, the operator can react without delay and, if necessary, contact the responsible service company. Marc Rosenkranz particularly emphasises the high-resolution representation of camera surveillance.

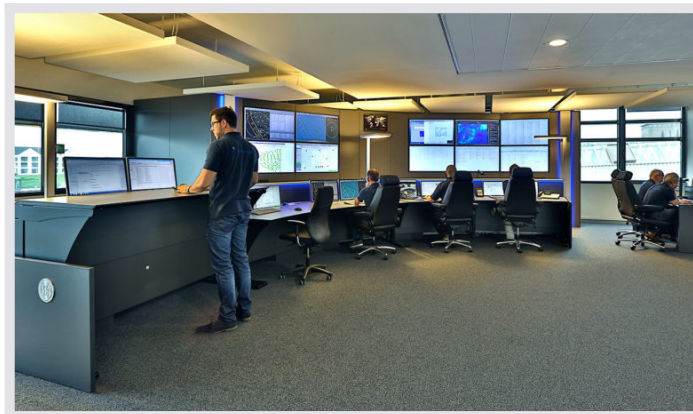
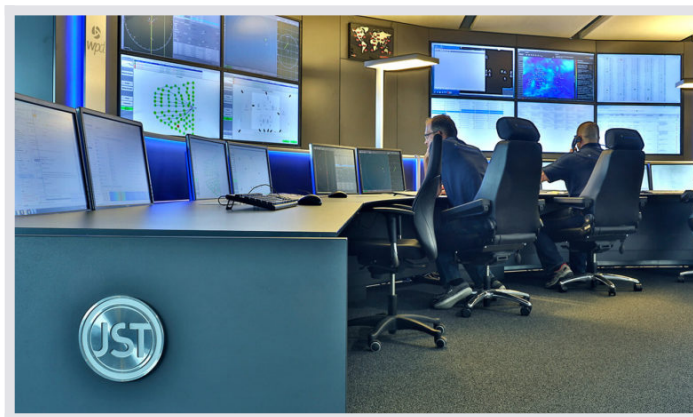
Using JST MultiConsoling®, a concept for controlling all workstation computers and the large-screen system, with the myGUI® graphical user interface, administrators can also conveniently display current events on the large display wall as BigPicture, or exchange screen contents from workstation to workstation. "This way we always keep the overview despite many different details", summarises the team around Marc Rosenkranz.

The technical equipment is complemented by high-quality ergonomic control center furniture from the Stratos X11® range and a special Recaro operator chair. The infinitely variable electromotive height adjustment of the Stratos OperatorDesks receives special praise from the wpd windmanager staff. Marc Rosenkranz: "The new jobs are very well received here in the control center. His conclusion: "The cooperation went perfectly – JST has adapted perfectly to all our wishes".



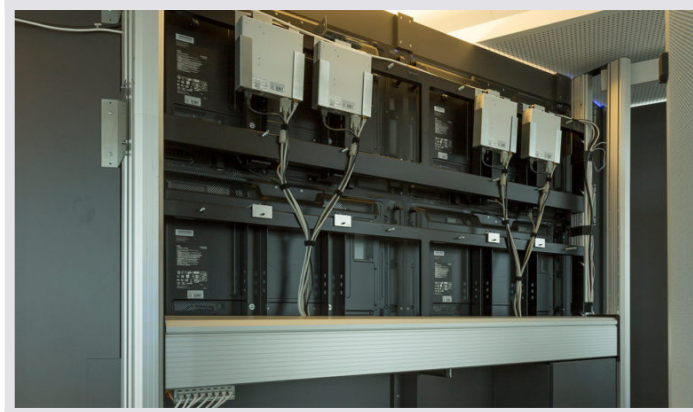


**JST large display wall:** The JST large display wall keeps the entire control room team informed about the most important events in real time. This is ensured by an automatic source activation, the JST PixelDetection Software. The 24/7-capable business displays are installed in a large display wall covering; this keeps noise and heat away from the operator stations. Also visually well thought-out in every detail – stainless steel design strips and the JST AmbientLight form the appropriate frame for the proactive monitor wall.



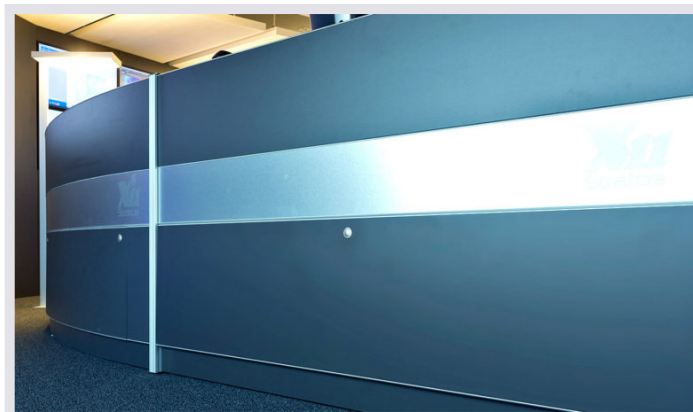
**JST Operator Worktables:** A successful solution, especially with regard to ergonomics: the special Stratos X11® CommandDesks in front of the large display wall. Thanks to the infinitely variable electromotive height adjustment from sitting to standing height, a continuous one-sided posture and thus health problems are avoided.





**JST MultiConsoling®: myGUI®** – shown here on the left screen – serves as a user interface for **MultiConsoling®**, with which it is possible to display any sources (computers, cameras etc.) in real time on the workstation monitors, on individual **large-screen displays** or as BigPicture across several large-screen displays. Another special feature: Only one mouse and keyboard are needed per seat to operate everything in real time.

**JST large display wall:** The view behind the large display wall paneling shows the rear views of the displays, which were fitted into the JST display rack with millimetre precision. Well visible in the upper part of the photo: the multi-console receivers.





**JST control center desk:** The Stratos X11® OperatorDesk meets the highest ergonomic and visual demands. Generously laid out supply rooms ensure a perfect appearance for the Stratos X11® OperatorDesk: The desks enable cleanly installed technology, without visible cables; there is also room for the MultiConsoling receivers. Despite the generously dimensioned supply room, even large employees have excellent legroom.

## About windmanager

As Germany's leading and internationally expanding company in the commercial and technical management of wind farms and solar projects, wpd windmanager GmbH & Co. KG has 423 employees. Worldwide, wpd windmanager manages 528 wind farms with 2,550 wind turbines, 108 solar farms and a total output of 5,631 megawatts. For more than 20 years, fund companies and national and international investor groups have relied on the company's know-how. In addition to the core market in Germany, wpd windmanager is active in various other European countries, in South America and also in Asia. The company is growing continuously: in 2020 alone, additional German locations were added in Erkelenz and Bremerhaven, as well as in Spain, Sweden and Chile. Since 2020, wpd windmanager has been certified according to DIN EN ISO 9001.



**"The collaboration with JST went perfectly."**

**Marc Rosenkranz**

Responsible for the management of the First Level Service and  
the new control room in Bremen

**REQUEST AN OFFER WITHOUT OBLIGATION**

The components used in this project:



**DisplayWall** with special S-PVA panels for reliable 24/7 operation - optional with proactive alarm function



**MultiConsoling**<sup>®</sup> System – complete control room system for workplace, monitor wall and other systems



**myGUI**<sup>®</sup> user interface - in the intuitive 3D design of your control room for maximum user comfort



**Stratos X11**<sup>®</sup> control room desk – optional with height adjustment and proactive AlarmLight system



**24/7 Recaro operator chair** – optional with seat surface extension



**PixelDetection**® – proactive alarm software to shorten response times

### Other projects with a similar task



**Adwen, Bremerhaven**



[Find out more](#)

---



## Deutsche Windtechnik



[Find out more](#)

---



## Iberdrola, Sassnitz



[Find out more](#)



