

Setting up an efficient control center - we are the specialists!

If you want to set up an efficient control center, then JST is the right contact.

We plan your new control center taking into **consideration all specifications, guidelines and standards**.

Our **planning Know-how** is always at the **state-of-the-art technology**.

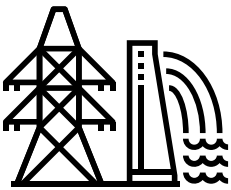
And we offer even more: We **guarantee you the perfect function** of all interfaces in the control center even in writing!

When we set up an efficient control center for you, we select from all components the best for your project. During our detailed planning of your control center we recommend the **large screen technology** with the most modern monitor walls.

From our **Profi-Tools** we tailor **the perfect software package**.

After completion of the project we are still there for you with maintenance and service 24 hours a day, 365 days a year.

OFFER CONTROL CENTER SETUP





- Analysis of your needs in a workshop day
- Detailed concept for the establishment of a control center
- Proactive monitor walls to shorten response times
- Connection of crisis rooms and standby teams
- Ergonomic control center furniture for professional furnishing



Practical examples: Set up control center

JST will guide you step by step to set up a powerful control center.

Our expert knowledge is particularly important for control centers of companies which are a **“critical infrastructure”** in the sense of the **EU directives 2008/114/EC**.

Here, our modern and networked environment poses special challenges for the complex technology. The biggest threat is usually posed by criminal energy from outside in the form of attacks on the entire system.

This is where **maximum protection is required!** With a **KRITIS control center** from JST, you can detect such activities immediately and act quickly.

We will be happy to put you in touch with the respective contact person.

Newly established control center for InfraLeuna

“You concentrate on your core business, we design and develop the framework for your production.”

In keeping with this corporate philosophy, InfraLeuna GmbH – the operator of the infrastructure facilities at the Leuna chemical site – makes every effort to provide its customers at the Leuna chemical site with all the necessary services at reasonable prices and in high quality.

This also includes the realization of extensive modernization work.

This includes the installation of a new central control room.

TO THE PROJECT



A gesture that says it all: the responsible project managers make a clear statement about the new central control room with their thumbs up.

Jochen Rösner / Mark Muschick / Eberhard Schoof (from left to right)

The responsible project managers



Spot landing with future-proof control room

Structural changes in the company, the optimization of workstations and a complete modernization of the control technology – three important requirements that were to be realized at the Reick location of DREWAG– Stadtwerke Dresden GmbH.

As a partner for accomplishing this mammoth task, the DREWAG managers decided in favor of the control room specialists from Jungmann Systemtechnik after a thorough market survey.

The result: “A control room that can really be described as a precision landing,” says Tino Kuhnke (Group Manager Generation, Control Room).

TO THE PROJECT



DREWAG 

In Dresden they are convinced of the new installation from JST: "We have a flexible and future-proof technology here".

Hartmut Hinz / Jens Meller / Andreas Rammer / Christian Helmholz (from left to right)

DREWAG GmbH



Newly established control center controls and monitors wind turbines worldwide

Whether weather data on a world map, detailed electrical circuit diagrams or various camera displays – with the new JST video wall, the employees of the Bremen control room of wpd windmanager Windenergieanlagen have a close eye on wind turbines around the globe.

As a specialist in the field of commercial and technical management of onshore and offshore wind farms, JST – Jungmann Systemtechnik has moved into completely new headquarters in Bremen, which also houses the control room and first level support with new equipment from JST – Jungmann Systemtechnik.

TO THE PROJECT



"The collaboration with JST went extremely well."

Marc Rosenkranz

Responsible for the management of the First Level Service and the new control room in Bremen



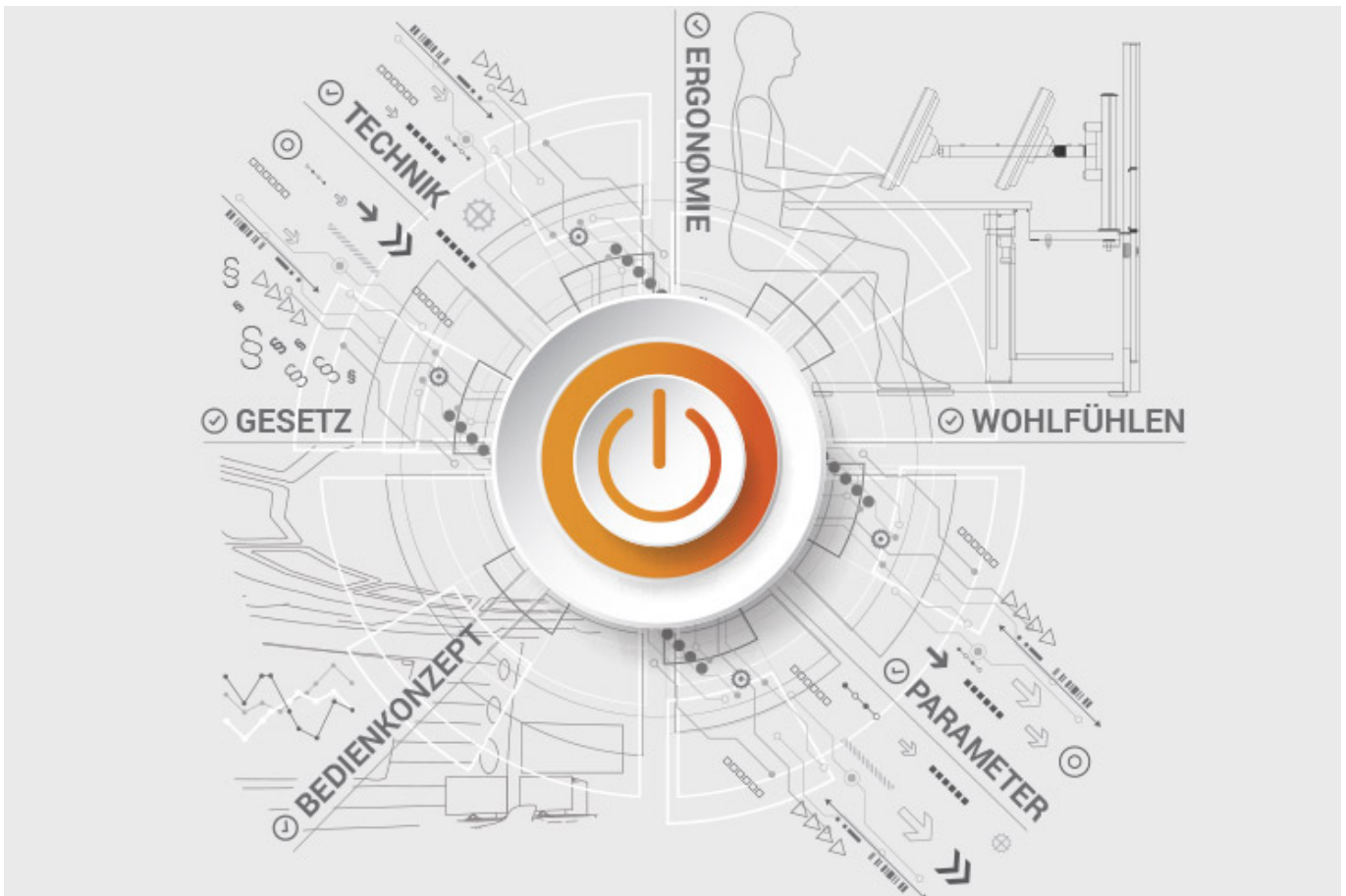
ALL PROJECTS

Documents to download

- [Project report on the new central control room of Infraleuna \(PDF\)](#)
- [Comfortable and intuitive system operation at DREWAG \(PDF\)](#)

JST product overview: Think of everything!

Setting up the control center with suitable components



Analysis and planning of your control room

Are you planning changes in your control room?

Or would you like to bring a breath of fresh air into your control room?

Then use the proven planning packages or the free of charge online analysis from JST.

Our experts support you according to BAUA: Study and all important standards and guidelines.

[More about free analysis](#)



Large screen technology – react faster!

Proactively present important information to the right people before an incident can have a major impact. With scalable large screen walls based on LC displays and cube technology, we will also find the right large screen system for 24/7 operation for you!

More about the JST large screen technology



myGUI® – User interface for

Large screen system, workplace & infrastructure

The intuitive myGUI® user interface in the 3D layout of your control room offers highest ease of use of your MultiConsoling® system.

With one click you can operate workstations, monitor walls and infrastructure – always absolutely safe and outstanding in stressful situations.

[More about the myGUI®](#)



MultiConsoling® – the

Control room switchboard

MultiConsoling® is the high-availability control center to connect all signals of your systems with the monitors on the Operator station and on the monitor walls.

The transmission takes place in real time and no software is required on your computers.

[More about the MultiConsoling®](#)



Control room furniture: ergonomic operator consoles, Recaro operator chair, AllMedia Conference System

Furniture and technology are available from JST from one source.

The height-adjustable and highly stable Stratos operator consoles and matching surrounding furniture form the ergonomic basis for your control room.

[More about the control room furniture](#)



Large screen control with graphic controller

With the IP-based graphics controller you can get your monitor wall going.

The graphics controller records all video signals via the IP network simultaneously and distributes them at any point and in any scale on the large screen wall.

[More about graphic controllers](#)



PixelDetection® – the operator's eye

Shorten your reaction times!

With PixelDetection® you receive the right alarm at exactly the right moment and always keep an overview. Proven for many years and repeatedly awarded, PixelDetection® is also called the "artificial eye of the operator".

[More about PixelDetection®](https://www.jungmann.de/)



JST myLogin® – the operator's login

JST myLogin® is a revolutionary solution that allows you to log on and off centrally and quickly at all operator workstations with your company ID card.

The login/logout process only takes a few moments.

If desired, your personal arrangement of the screen contents can also be saved.

[More about myLogin®](#)



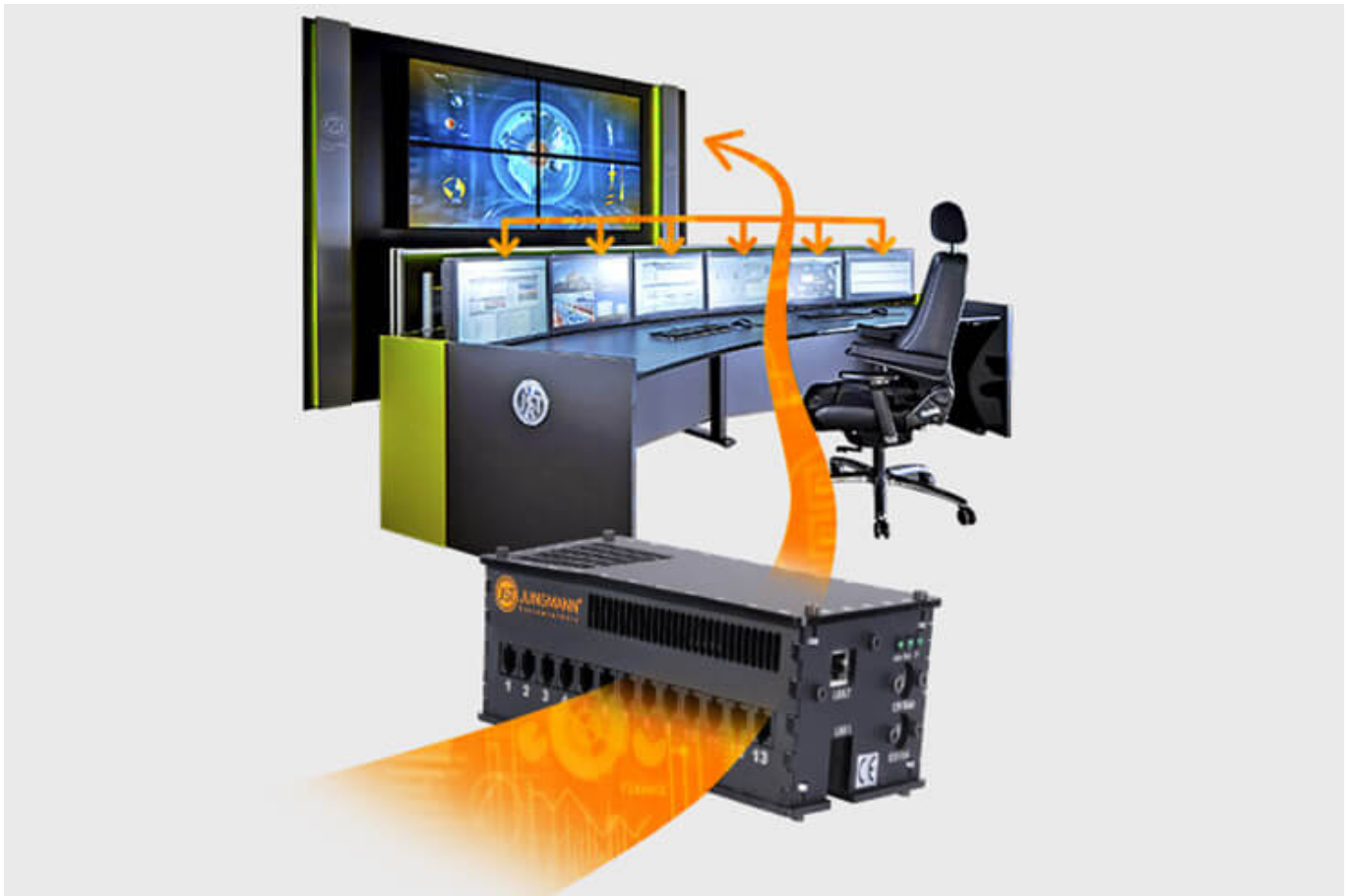
CockpitView – the operator’s dashboard

Create dashboards with content from different computers on different networks!

CockpitView offers you the perfect overview of your most important applications at a glance.

With CockpitView you stay in control and can reduce monitors at the workplace or even the large screen system.

[More about CockpitView](#)



Automation for video walls and

Operator workstations

With the JST CommandBox you can monitor circuits, relays, audio signals, and much more. and have them automatically switched on at defined workstations or on the monitor wall in the case of critical values.

The application possibilities are almost limitless!

[More about ControlRoom-Automation](#)



Control room remote: connection of

decentralized systems and locations

The optional remote interface of the JST systems allows you to visualize and operate remote computers and entire control rooms.

Even complex emergency scenarios for backup control rooms can be realized!

[More about ControlRoom-Remote](#)



Computer outsourcing and

PC remote control

By outsourcing the computers from the control room to the technical room, you reduce the heat load and create more space in the employees' legroom.

Further advantages are the central administration of the computers and the physical access protection in the secured technical room.

[More about computer outsourcing](#)



Optional service and maintenance packages

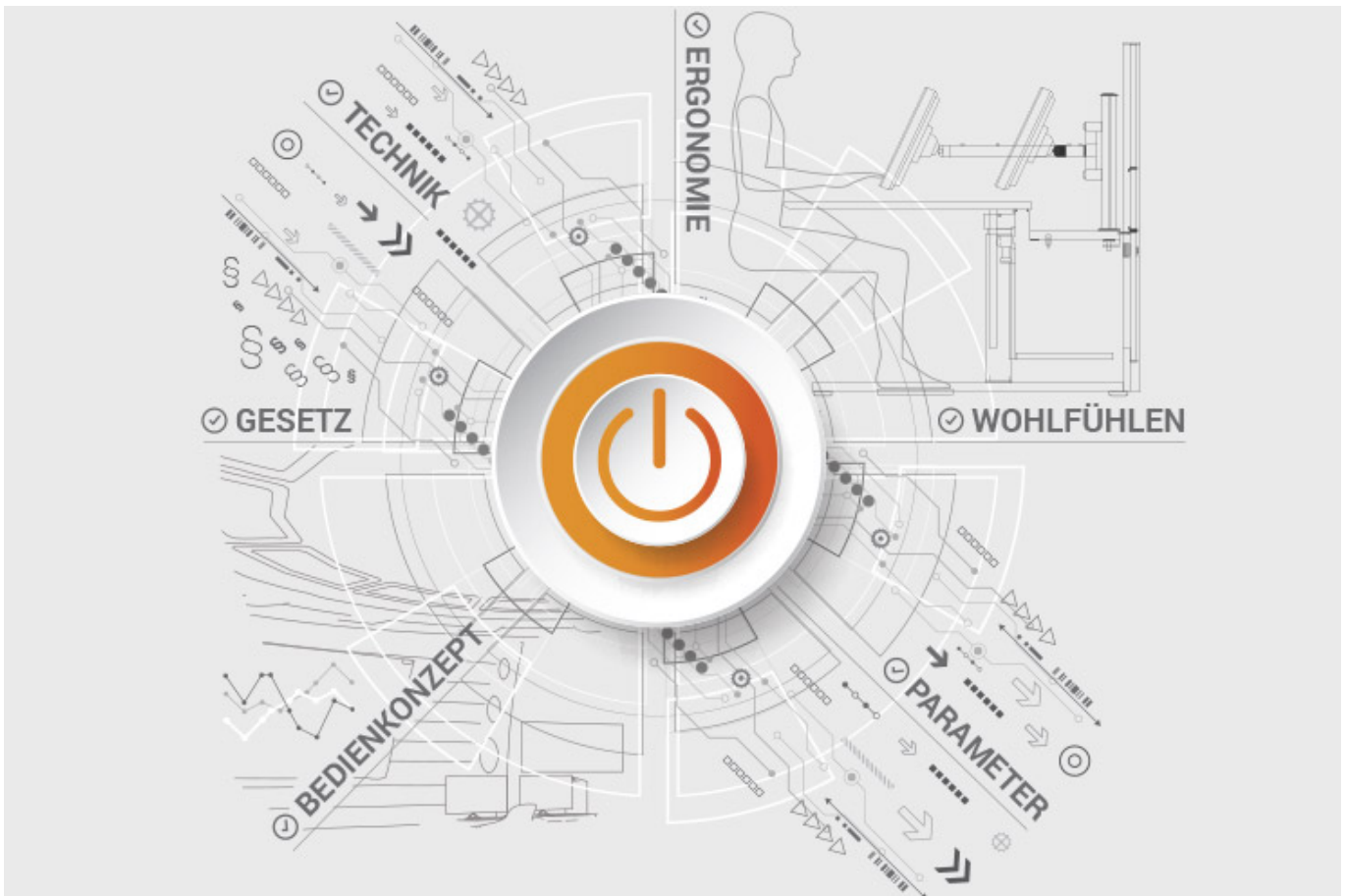
To ensure that your control room is as available as you need it to be, we offer availability assurance packages in various scopes and versions.

You will receive tailor-made solutions that support your market and competitive success.

[More about service from JST](#)

JST product overview: Think of everything!

Setting up the control center with suitable components



Analysis and planning of your control room

Are you planning changes in your control room?

Or would you like to bring a breath of fresh air into your control room?

Then use the proven planning packages or the free of charge online analysis from JST.

Our experts support you according to BAUA: Study and all important standards and guidelines.

[More about free analysis](#)



Large screen technology – react faster!

Proactively present important information to the right people before an incident can have a major impact. With scalable large screen walls based on LC displays and cube technology, we will also find the right large screen system for 24/7 operation for you!

More about the JST large screen technology



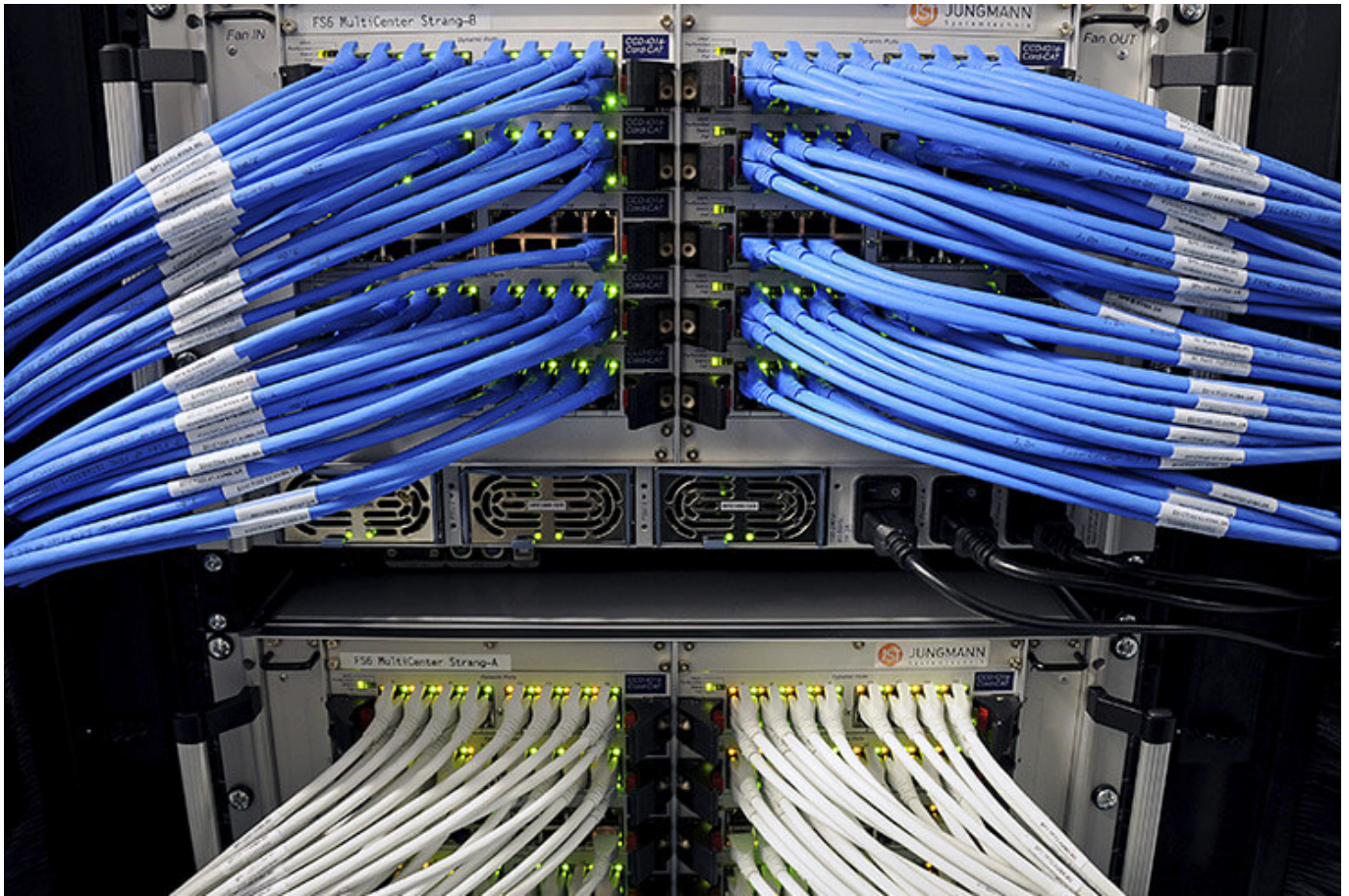
myGUI® – User interface for

Large screen system, workplace & infrastructure

The intuitive myGUI® user interface in the 3D layout of your control room offers highest ease of use of your MultiConsoling® system.

With one click you can operate workstations, monitor walls and infrastructure – always absolutely safe and outstanding in stressful situations.

[More about the myGUI®](#)



MultiConsoling® – the

Control room switchboard

MultiConsoling® is the high-availability control center to connect all signals of your systems with the monitors on the Operator station and on the monitor walls.

The transmission takes place in real time and no software is required on your computers.

[More about the MultiConsoling®](#)



Control room furniture: ergonomic operator consoles, Recaro operator chair, AllMedia Conference System

Furniture and technology are available from JST from one source.

The height-adjustable and highly stable Stratos operator consoles and matching surrounding furniture form the ergonomic basis for your control room.

[More about the control room furniture](#)



Large screen control with graphic controller

With the IP-based graphics controller you can get your monitor wall going.

The graphics controller records all video signals via the IP network simultaneously and distributes them at any point and in any scale on the large screen wall.

[More about graphic controllers](#)



PixelDetection® – the operator's eye

Shorten your reaction times!

With PixelDetection® you receive the right alarm at exactly the right moment and always keep an overview. Proven for many years and repeatedly awarded, PixelDetection® is also called the “artificial eye of the operator”.

[More about PixelDetection®](https://www.jungmann.de/)



JST myLogin® – the operator's login

JST myLogin® is a revolutionary solution that allows you to log on and off centrally and quickly at all operator workstations with your company ID card.

The login/logout process only takes a few moments.

If desired, your personal arrangement of the screen contents can also be saved.

[More about myLogin®](#)



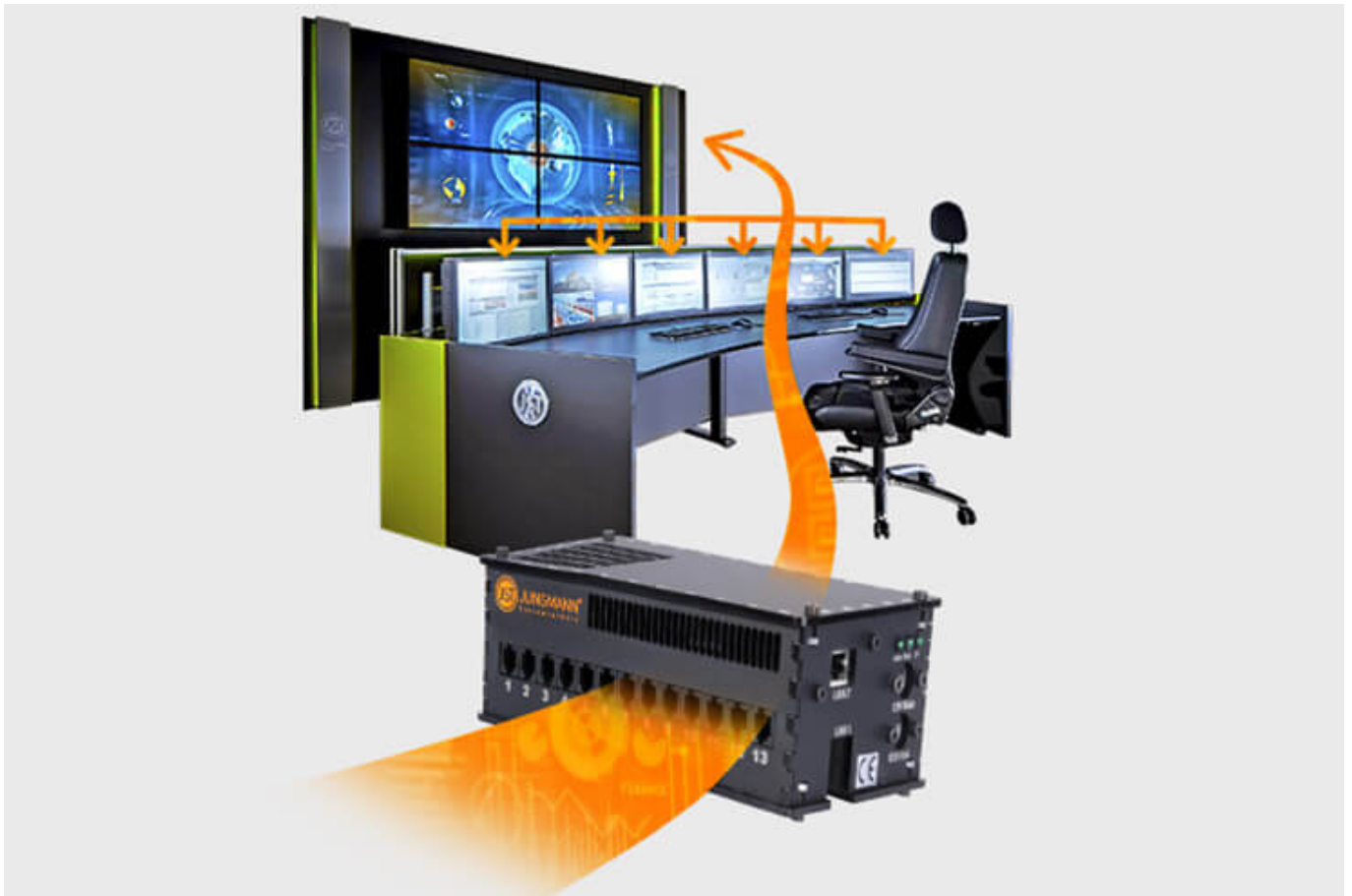
CockpitView – the operator’s dashboard

Create dashboards with content from different computers on different networks!

CockpitView offers you the perfect overview of your most important applications at a glance.

With CockpitView you stay in control and can reduce monitors at the workplace or even the large screen system.

[More about CockpitView](#)



Automation for video walls and

Operator workstations

With the JST CommandBox you can monitor circuits, relays, audio signals, and much more. and have them automatically switched on at defined workstations or on the monitor wall in the case of critical values.

The application possibilities are almost limitless!

[More about ControlRoom-Automation](#)



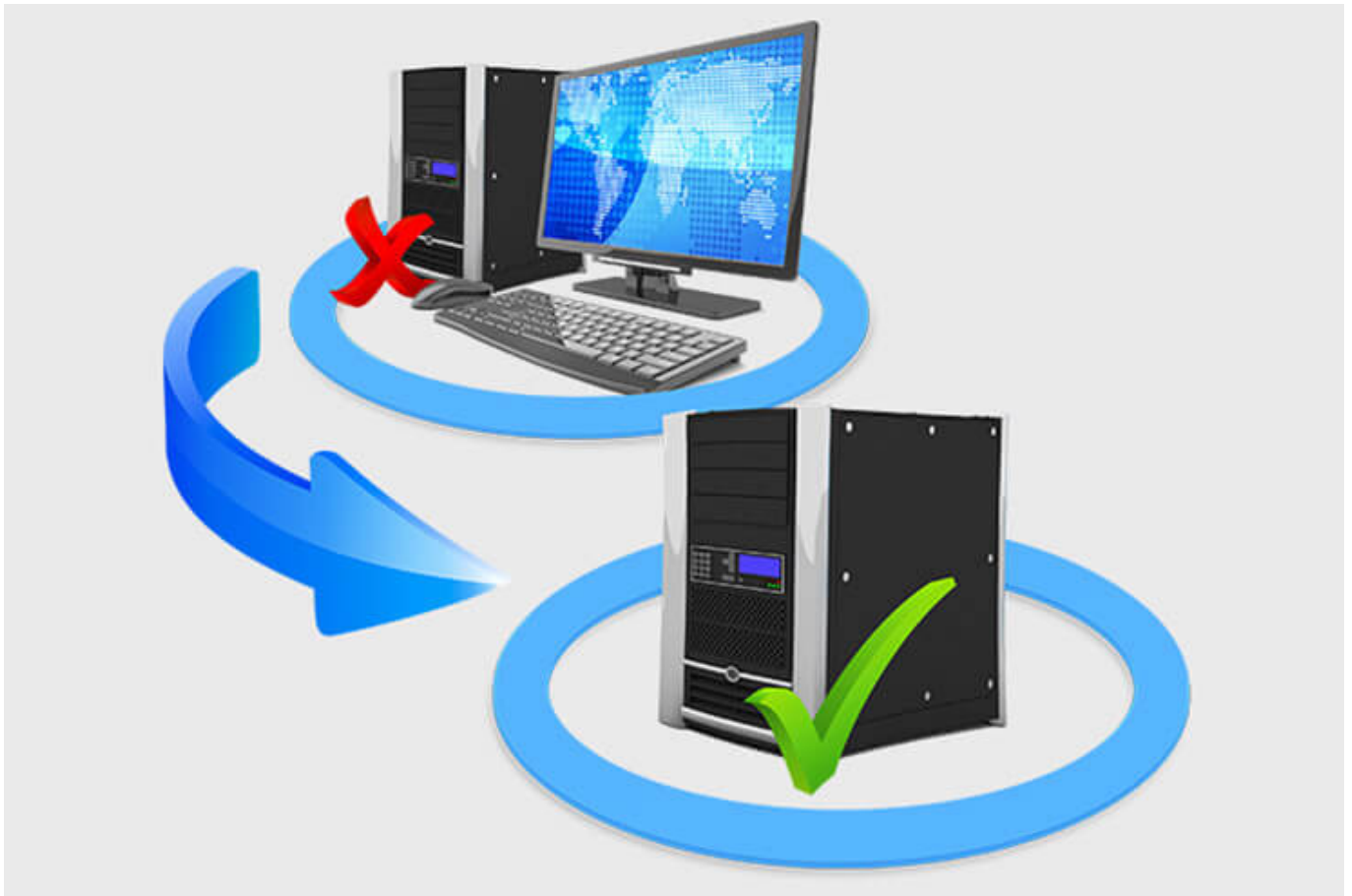
Control room remote: connection of

decentralized systems and locations

The optional remote interface of the JST systems allows you to visualize and operate remote computers and entire control rooms.

Even complex emergency scenarios for backup control rooms can be realized!

[More about ControlRoom-Remote](#)



Computer outsourcing and

PC remote control

By outsourcing the computers from the control room to the technical room, you reduce the heat load and create more space in the employees' legroom.

Further advantages are the central administration of the computers and the physical access protection in the secured technical room.

[More about computer outsourcing](#)



Optional service and maintenance packages

To ensure that your control room is as available as you need it to be, we offer availability assurance packages in various scopes and versions.

You will receive tailor-made solutions that support your market and competitive success.

[More about service from JST](#)

Was möchten Sie als Nächstes tun?

Ich möchte

- [das kostenfreie Praxisbuch der Kontrollräume anfordern](#)
- [einen Rückruf für eine unverbindliche Beratung](#)
- [den Kontrollraum-Simulator in Buxtehude besuchen](#)
- [eine digitale 360°-Tour in einem Kontrollraum erleben](#)

<https://www.jungmann.de/>

- [mehr über Kontrollräume auf dem ko:mon Kongress erfahren](#)

We are happy to answer your questions about the installation of the control center

0800-777 8 666

You are currently viewing a placeholder content from **YouTube**. To access the actual content, click the button below. Please note that doing so will share data with third-party providers.

[More Information](#)

[Unblock content](#) [Accept required service and unblock content](#)