

The operations control center offers a reliable solution for police, fire departments and crisis management

You would like to equip your **control center** and **crisis management room** with reliable and future-oriented technology to be prepared for new challenges? We at JST advise you fully and passionately when it comes to planning and equipping your control center and crisis management / command room with innovative solutions. We bring "new momentum" to the **Crisis room and control center** for **civil protection, border surveillance, fire brigade, police, rescue service and military**.

REQUEST A QUOTATION



- Planning with architecture, technology, light, acoustics and climate planning
- Proactive large screen systems for 24/7 operation
- Reduction of keyboards and mice on the situation desks and control station desks

- No hardware/software changes to your systems necessary!
- Highly stable situation desks and control center desks "Made in Germany"
- More overview and efficient operation for your employees



SIEMENS



Dornseif®
Winterdienst mit System

MHH
Medizinische Hochschule
Hannover

THE SQUARE

SAG

Examples from the field

In control centers and situation rooms short reaction times are mandatory. Processes and workflows must be executed efficiently, quickly and without errors in order to make sound decisions. JST technology offers your team the targeted alerting and control of crisis and alarm scenarios as well as a maximum of operating comfort, especially in stress situations. Also, decentralized emergency call centers can be brought together at one location – this ensures shorter response times and optimal cooperation between your team.

We will be happy to put you in touch with the respective contact person.

Video control center supports police in the fight against crime

“Police catch thugs thanks to video surveillance”, “Cameras against crime”, “Video system convicts robbers”, “More cameras, more arrests” – these and similar headlines have increasingly appeared in the Bremen press in recent months. Background: The police of the Hanseatic City have set up a new video control center, which ideally aims to prevent criminal offences. The authority was supported in this ambitious project by JST control room specialists. And that’s not everything: the senior staff of the Bremen police force also benefits from the experience of the Jungmann experts.

TO THE PROJECT



On a new large display wall, the staff recruited as part of the project follow the events at the focal points in the city-state of Bremen. Thanks to the use of JST MultiConsoling[®], they are able to flexibly display all relevant images on the video wall or at their workstations as required. More than 60 cameras - mainly positioned in the area of Bremen's main train station - make it possible to keep a permanent eye on the current situation.



Modernization of traffic control center at Hamburg police headquarters

Greater safety on Hamburg's roads and improved traffic flow on the Hanseatic city's routes – two stated objectives that will be achieved with the new, state-of-the-art traffic control center at the police headquarters in Alsterdorf. With the professional support of the SWARCO TRAFFIC SYSTEMS GmbH general contractor and Jungmann Systemtechnik – as subcontractor of SWARCO – the technical prerequisites were created.

TO THE PROJECT



Polizeipräsidium Hamburg

Thanks to state-of-the-art technology, he and his colleagues can take virtual tours of the Hanseatic City of Hamburg via the Cube large screen wall:

Jürgen Otten

Police Commissioner



New control center creates secure digital radio basis

Communication is the “A” and “O”. Digital radio is used whenever firefighters go out to combat a fire, a police patrol car is called to an accident, or even hundreds of people line up to accompany major events. The access network for digital radio in Lower Saxony is monitored by ASDN (Autorisierte Stelle Digitalfunk Niedersachsen), which is assigned to the Central Police Directorate Lower Saxony. With the support of Jungmann Systemtechnik an optimal basis for the monitoring tasks of ASDN could now be created.

TO THE PROJECT



"Our daily work is greatly simplified by the Jungmann system."

Stefan Wächter

Head of the Authorized Body Digital Radio Lower Saxony



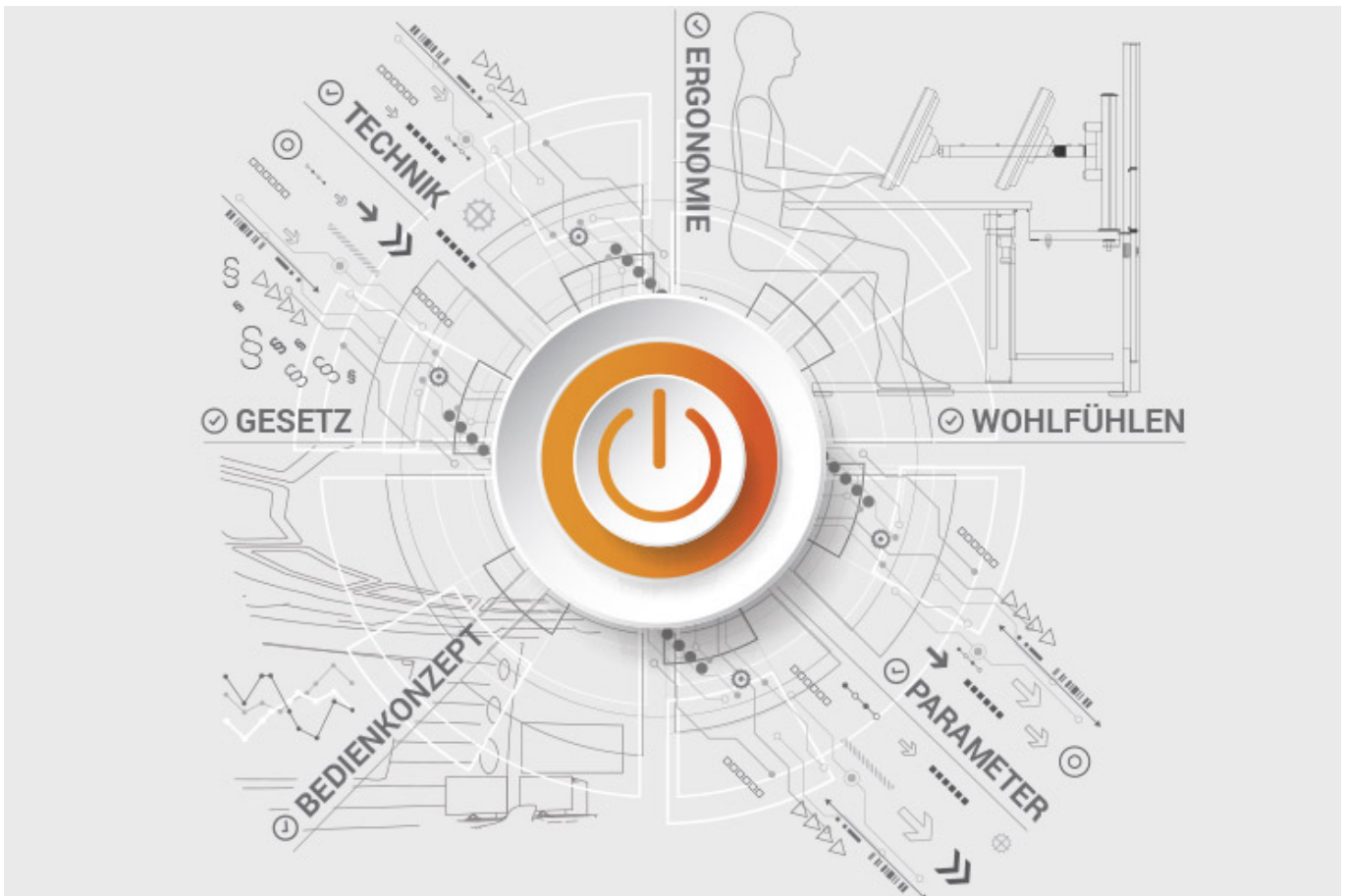
ALL PROJECTS

Documents to download

- [Project report of the new security control center of the Hannover police \(PDF\)](#)
- [Project report of the new traffic control center BVG Berlin \(PDF\)](#)

JST product overview: Think of everything!

Components for your security center



Analysis and planning of your control room

Are you planning changes in your control room? Or would you like to bring a breath of fresh air into your control room? Then use the proven planning packages or the free of charge online analysis from JST. Our experts support you according to BAUA: Study and all important standards and guidelines.

[More about free analysis](#)



Large screen technology – react faster!

Proactively present important information to the right people before an incident can have a major impact. With scalable large screen walls based on LC displays and cube technology, we will also find the right large screen system for 24/7 operation for you!

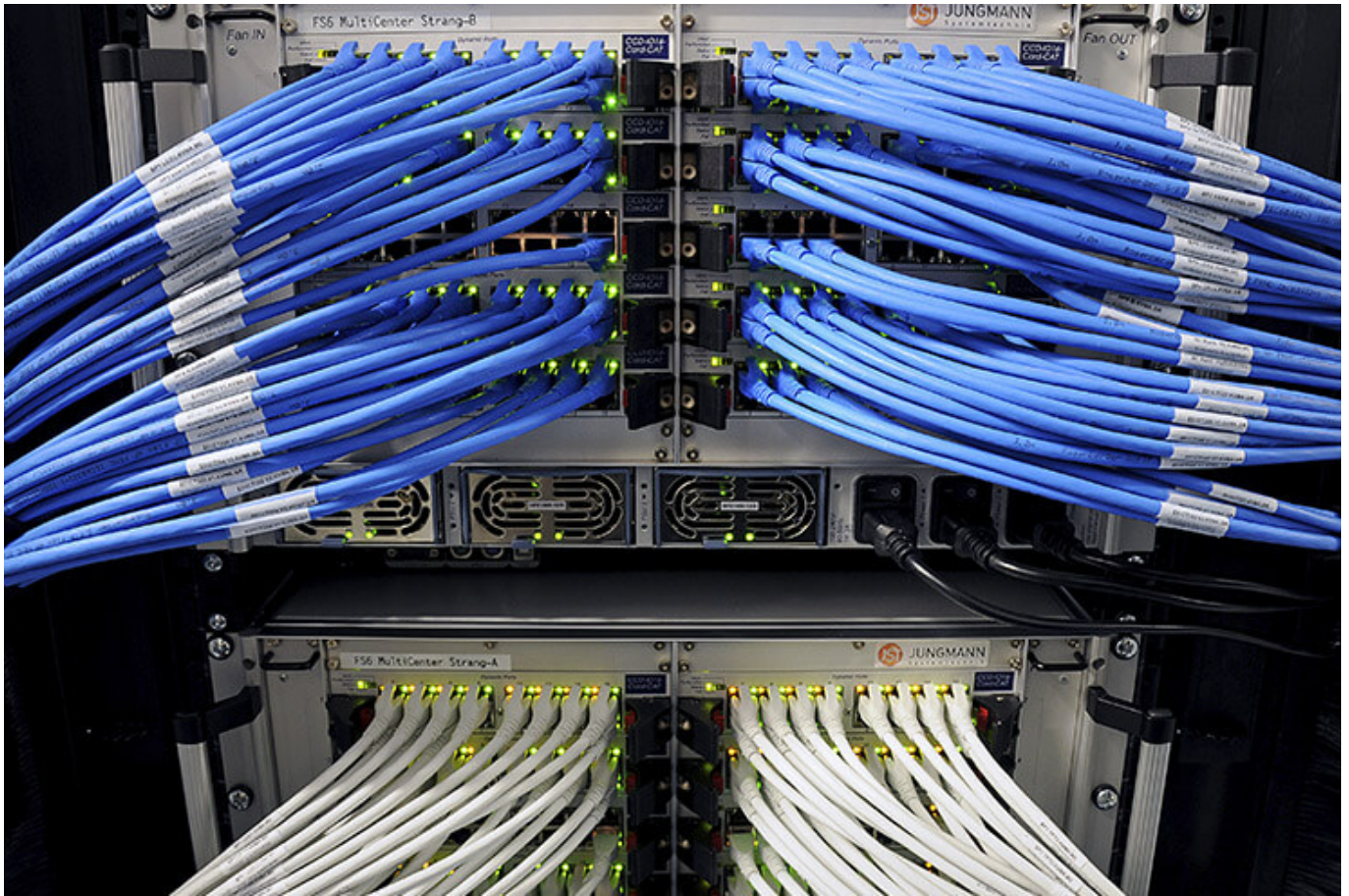
More about the JST large screen technology



myGUI® – User interface for Large screen system, workplace & infrastructure

The intuitive myGUI® user interface in the 3D layout of your control room offers highest ease of use of your MultiConsoling® system. With one click you can operate workstations, monitor walls and infrastructure – always absolutely safe and outstanding in stressful situations.

[More about the myGUI®](#)



MultiConsoling[®] – the command center of the control room

MultiConsoling[®] is the high-availability control center to connect all signals of your systems with the monitors on the Operator station and on the monitor walls. The transmission takes place in real time and no software is required on your computers.

[More about the MultiConsoling[®]](#)



Control room furniture: ergonomic operator consoles, Recaro operator chair, AllMedia Conference System

Furniture and technology are available from JST from one source. The height-adjustable and highly stable Stratos operator consoles and matching surrounding furniture form the ergonomic basis for your control room.

[More about the control room furniture](#)



Large screen control with graphic controller

With the IP-based graphics controller you can get your monitor wall going. The graphics controller records all video signals via the IP network simultaneously and distributes them at any point and in any scale on the large screen wall.

[More about graphic controllers](#)



PixelDetection® – the operator's eye

Shorten your reaction times! With PixelDetection® you receive the right alarm at exactly the right moment and always keep an overview. Proven for many years and repeatedly awarded, PixelDetection® is also called the “artificial eye of the operator”.

[More about PixelDetection®](#)



JST myLogin[®] – the operator's login

JST myLogin[®] is a revolutionary solution that allows you to log on and off centrally and quickly at all operator workstations with your company ID card. The login/logout process only takes a few moments. If desired, your personal arrangement of the screen contents can also be saved.

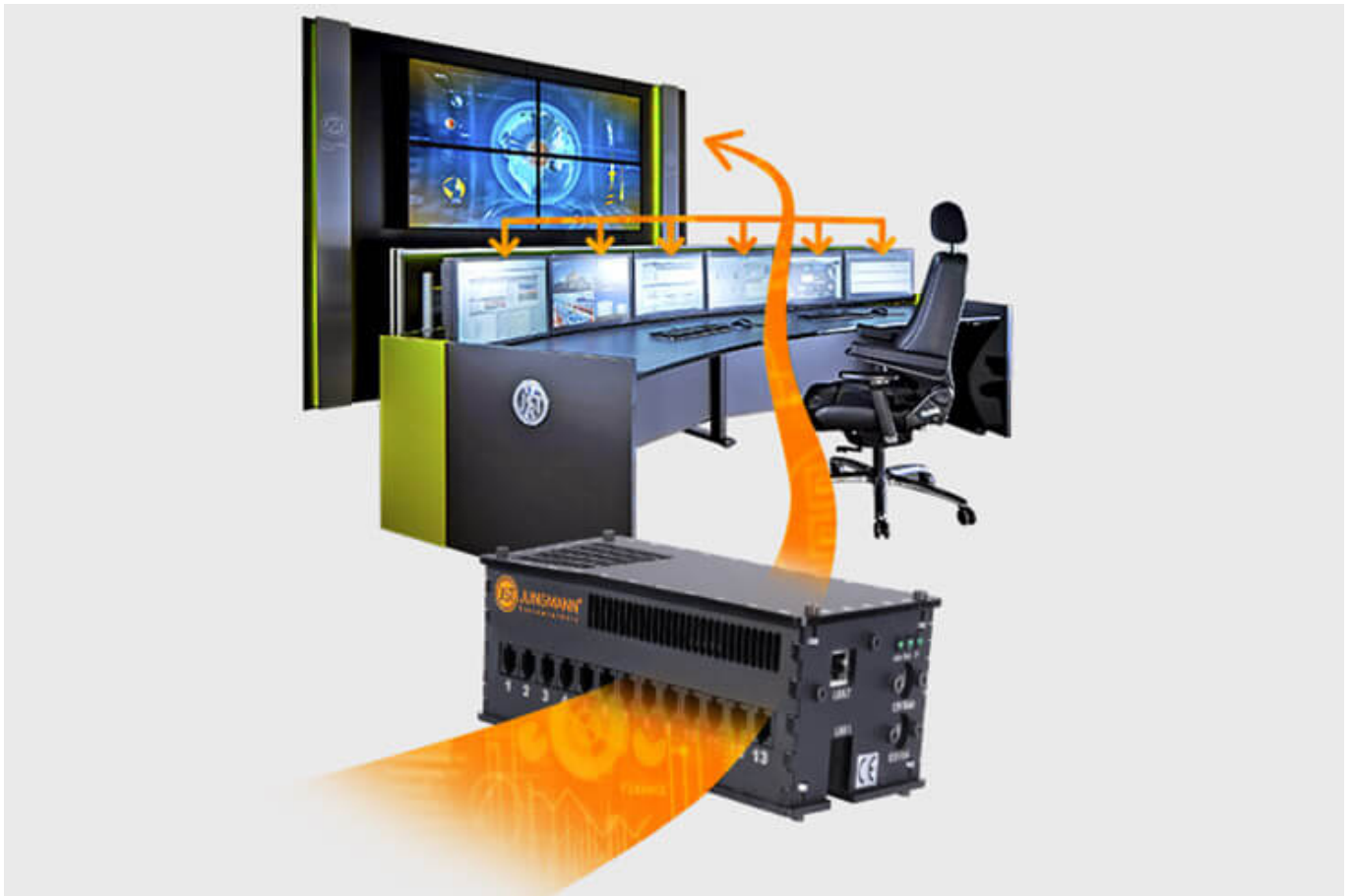
[More about myLogin[®]](#)



CockpitView – the operator’s dashboard

Create dashboards with content from different computers on different networks! CockpitView offers you the perfect overview of your most important applications at a glance. With CockpitView you stay in control and can reduce monitors at the workplace or even the large screen system.

[More about CockpitView](#)



Automation for video walls and Operator workstations

With the JST CommandBox you can monitor circuits, relays, audio signals, and much more. And have them automatically switched on at defined workstations or on the monitor wall in the case of critical values. The application possibilities are almost limitless!

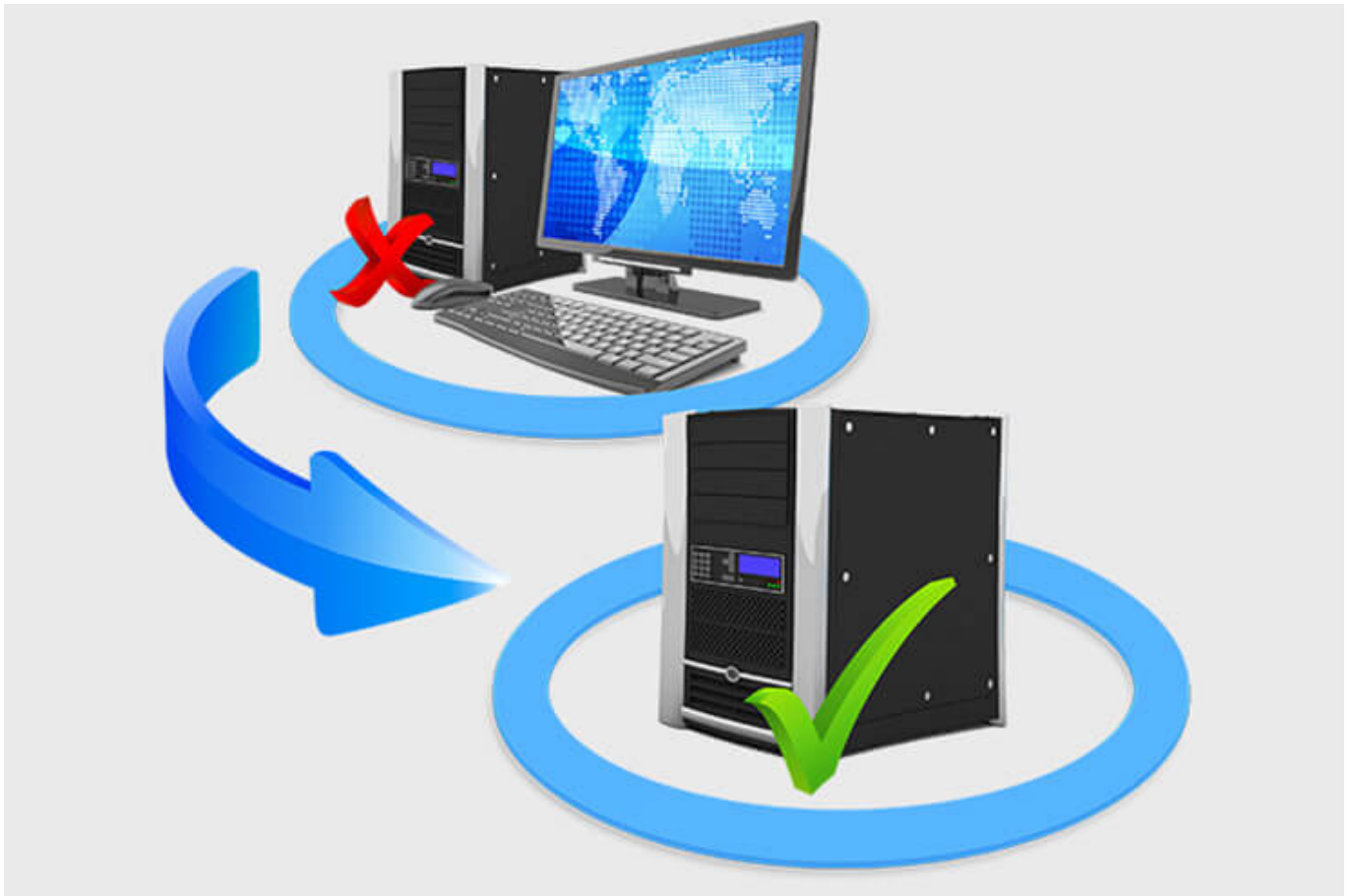
[More about ControlRoom-Automation](#)



ControlRoom Remote: connection of decentralized systems and locations

The optional remote interface of the JST systems allows you to visualize and operate remote computers and entire control rooms. Even complex emergency scenarios for backup control rooms can be realized!

[More about ControlRoom Remote](#)



Computer outsourcing and PC remote control

By outsourcing the computers from the control room to the technical room, you reduce the heat load and create more space in the employees' legroom. Further advantages are the central administration of the computers and the physical access protection in the secured technical room.

[More about computer outsourcing](#)



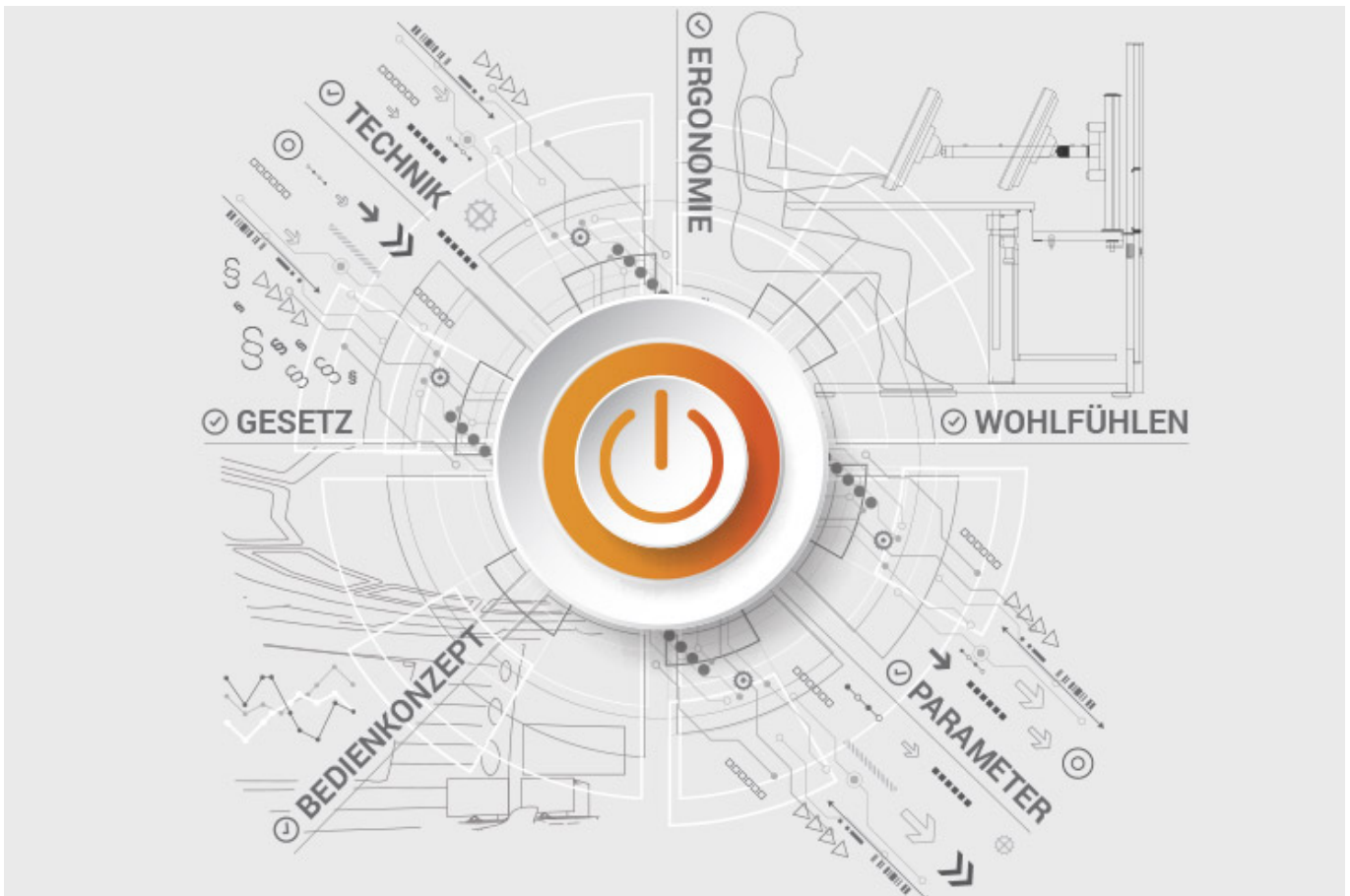
Optional service and maintenance packages

To ensure that your control room is as available as you need it to be, we offer availability assurance packages in various scopes and versions. You will receive tailor-made solutions that support your market and competitive success.

[More about service from JST](#)

JST product overview: Think of everything!

Components for your security center



Analysis and planning of your control room

Are you planning changes in your control room? Or would you like to bring a breath of fresh air into your control room? Then use the proven planning packages or the free of charge online analysis from JST. Our experts support you according to BAUA: Study and all important standards and guidelines.

[More about free analysis](#)



Large screen technology – react faster!

Proactively present important information to the right people before an incident can have a major impact. With scalable large screen walls based on LC displays and cube technology, we will also find the right large screen system for 24/7 operation for you!

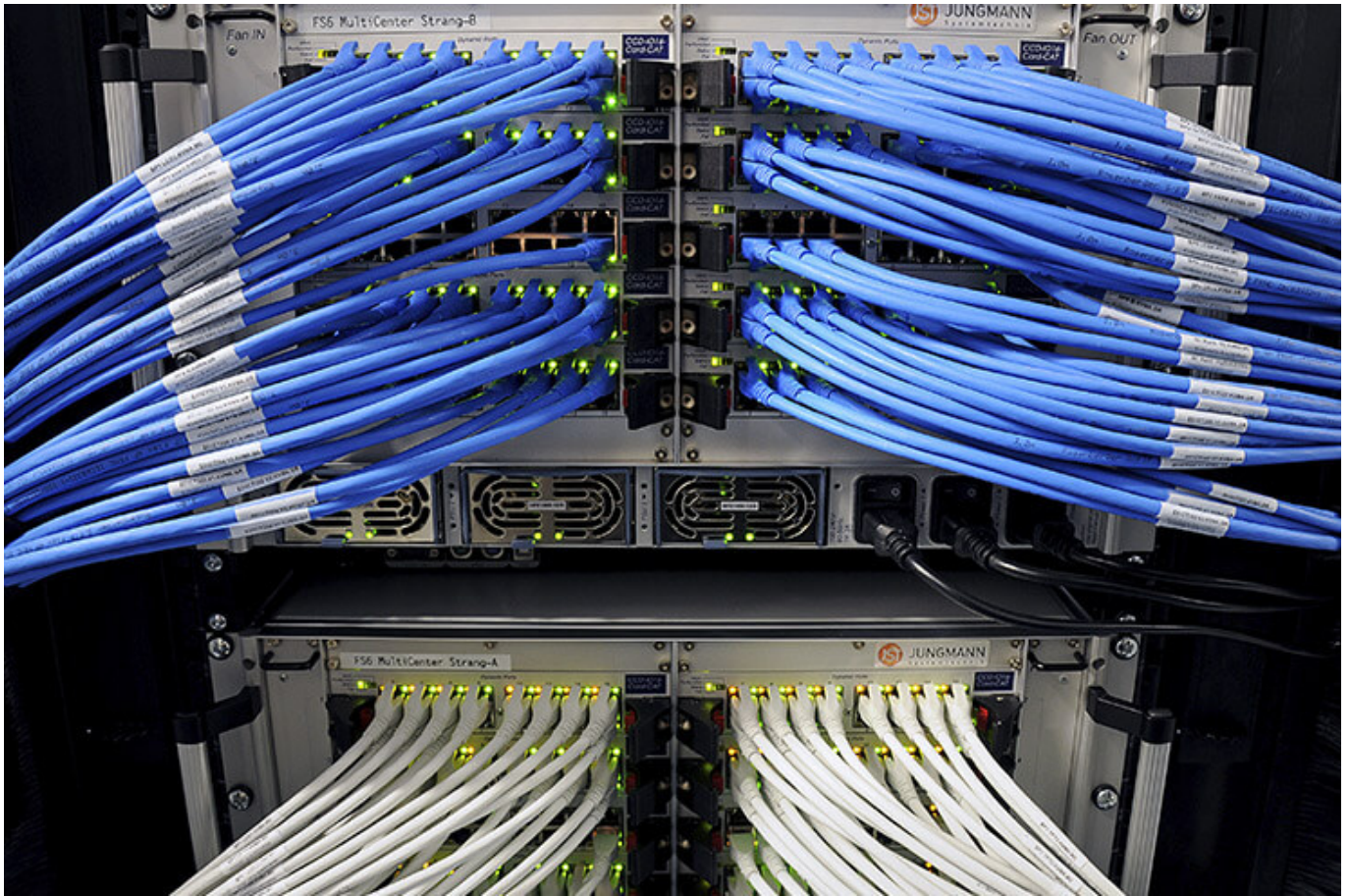
More about the JST large screen technology



myGUI® – User interface for Large screen system, workplace & infrastructure

The intuitive myGUI® user interface in the 3D layout of your control room offers highest ease of use of your MultiConsoling® system. With one click you can operate workstations, monitor walls and infrastructure – always absolutely safe and outstanding in stressful situations.

[More about the myGUI®](#)



MultiConsoling[®] – the command center of the control room

MultiConsoling[®] is the high-availability control center to connect all signals of your systems with the monitors on the Operator station and on the monitor walls. The transmission takes place in real time and no software is required on your computers.

[More about the MultiConsoling[®]](#)



Control room furniture: ergonomic operator consoles, Recaro operator chair, AllMedia Conference System

Furniture and technology are available from JST from one source. The height-adjustable and highly stable Stratos operator consoles and matching surrounding furniture form the ergonomic basis for your control room.

[More about the control room furniture](#)



Large screen control with graphic controller

With the IP-based graphics controller you can get your monitor wall going. The graphics controller records all video signals via the IP network simultaneously and distributes them at any point and in any scale on the large screen wall.

[More about graphic controllers](#)



PixelDetection® – the operator's eye

Shorten your reaction times! With PixelDetection® you receive the right alarm at exactly the right moment and always keep an overview. Proven for many years and repeatedly awarded, PixelDetection® is also called the “artificial eye of the operator”.

[More about PixelDetection®](#)



JST myLogin[®] – the operator's login

JST myLogin[®] is a revolutionary solution that allows you to log on and off centrally and quickly at all operator workstations with your company ID card. The login/logout process only takes a few moments. If desired, your personal arrangement of the screen contents can also be saved.

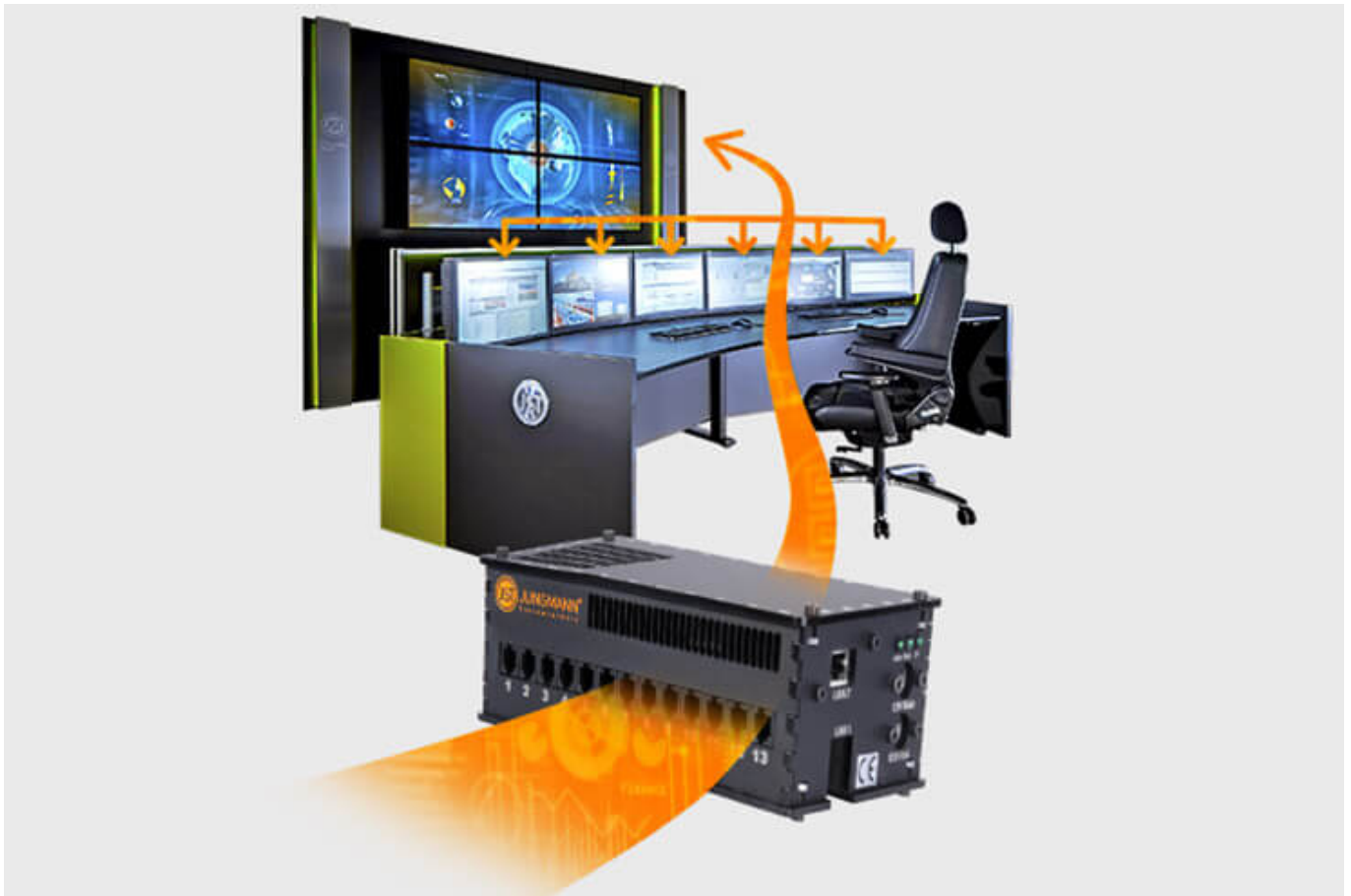
[More about myLogin[®]](#)



CockpitView – the operator’s dashboard

Create dashboards with content from different computers on different networks! CockpitView offers you the perfect overview of your most important applications at a glance. With CockpitView you stay in control and can reduce monitors at the workplace or even the large screen system.

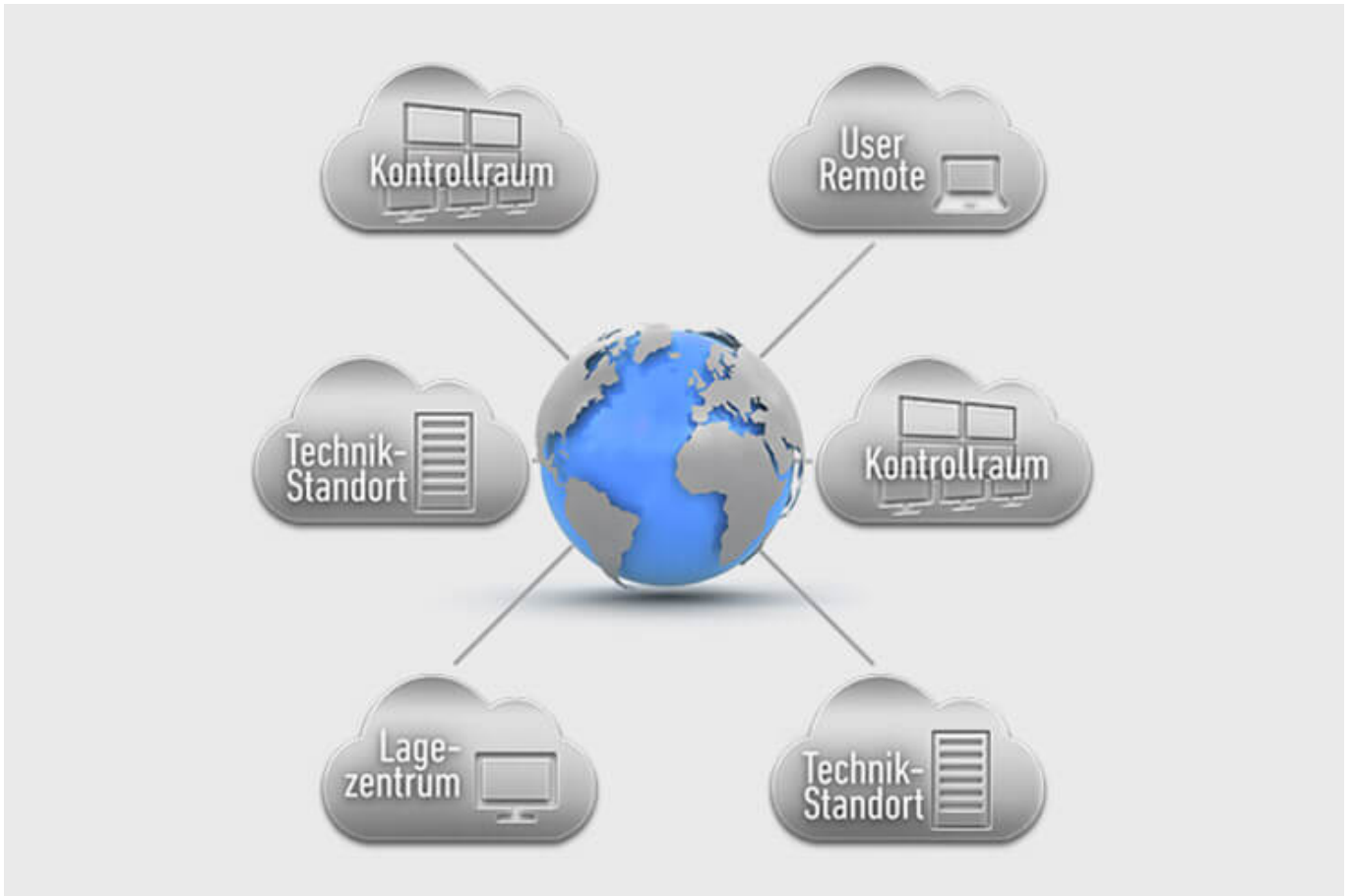
[More about CockpitView](#)



Automation for video walls and Operator workstations

With the JST CommandBox you can monitor circuits, relays, audio signals, and much more. And have them automatically switched on at defined workstations or on the monitor wall in the case of critical values. The application possibilities are almost limitless!

[More about ControlRoom-Automation](#)



ControlRoom Remote: connection of decentralized systems and locations

The optional remote interface of the JST systems allows you to visualize and operate remote computers and entire control rooms. Even complex emergency scenarios for backup control rooms can be realized!

[More about ControlRoom Remote](#)



Computer outsourcing and PC remote control

By outsourcing the computers from the control room to the technical room, you reduce the heat load and create more space in the employees' legroom. Further advantages are the central administration of the computers and the physical access protection in the secured technical room.

[More about computer outsourcing](#)

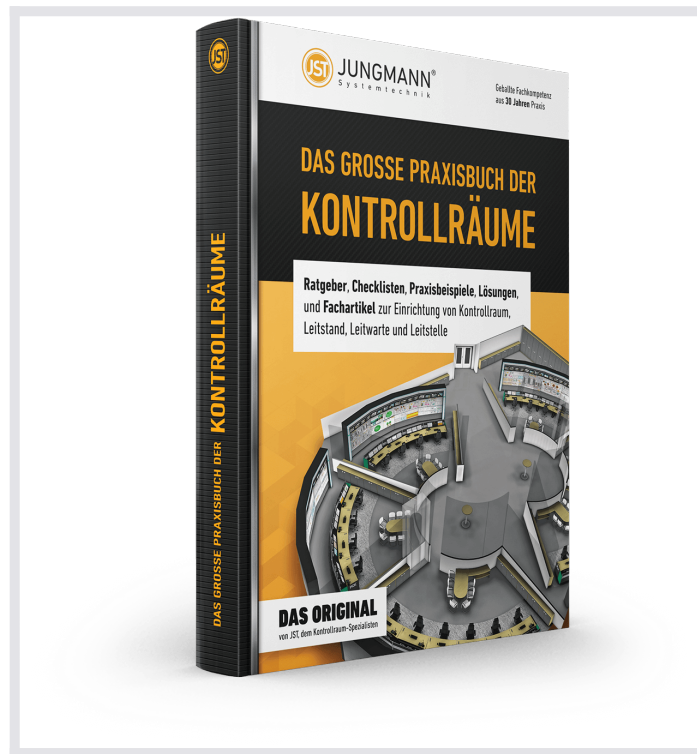


Optional service and maintenance packages

To ensure that your control room is as available as you need it to be, we offer availability assurance packages in various scopes and versions. You will receive tailor-made solutions that support your market and competitive success.

[More about service from JST](#)

THE GREAT PRACTICAL BOOK OF CONTROL ROOMS



Guidebooks, checklists, practical examples, solutions and technical articles for the installation of control rooms, control stations and control centers

REQUEST FREE OF CHARGE

The great practical book of control rooms is free of charge for JST customers and interested parties.

What would you like to do next?

I would like

- request the free control room practice manual
- a callback for a non-binding consultation
- visit the control room simulator in Buxtehude
- experience a digital 360° tour in a control room
- learn more about control rooms at the ko:mon congress

We are happy to answer your questions about our solutions for your security center

+49 4161 54044-0

You are currently viewing a placeholder content from **YouTube**. To access the actual content, click the button below. Please note that doing so will share data with third-party providers.

[More Information](#)

[Unblock content](#) [Accept required service and unblock content](#)