

## Production control room for Industry – Professional solutions to help in managing factories

Are you looking for innovations for **industrial production control rooms**? Welcome to JST – with us you will find well **thought-out and field-tested solutions** for demanding 24/7 operation in your production control room. Regardless of whether you are looking for new control room furniture or a monitor wall visualisation for your production control room. You want to make your control room fit for the future? We will provide comprehensive advice and leave nothing to chance. We will bring your production control room up to speed.

**REQUEST A NON-BINDING OFFER**



- Control room planning with architecture, technology, light, acoustics, climate planning
- Proactive monitor walls for 24/7 operation
- Reduction of keyboards and mice
  
- No changes to the hardware/software of your systems necessary!
- Highly stable control room consoles "Made in Germany"
- Improved overview and efficient operation for your plant operators



## Practical examples

In industry, you will find numerous production control rooms and measuring stations from JST in demanding 24/7 continuous operation. Our hardware and software solutions show their strengths when it comes to industrial safety requirements, decoupled network structures and the highest demands on the operating concept! Have a look at our reference reports and you are sure to find a project that comes very close to the requirements of your new control room.

**We will be happy to put you in touch with the appropriate contact person.**

### **Most modern measuring station for PCK refinery**

PCK Raffinerie GmbH in Schwedt/Oder is one of the top companies in Brandenburg and the most

important company in the Uckermark. Around 12 million tonnes of crude oil are processed into petroleum and petrochemical products in Schwedt every year. The main products are diesel, petrol, kerosene, liquefied petroleum gas, heating oils and bitumen. PCK was one of the first refineries in Germany to use biofuels and is itself a major producer of high-quality biofuel components.

**GO TO PROJECT**



*"Compared to the satellite measuring stations and also to the old central measuring station, we have been able to improve in every aspect, be it acoustics, lighting, air conditioning, ergonomics or user-friendliness".*

**Eric Sieger, Thomas Taube, Carsten Jungmann (from left to right)**

Chief Divisional Engineer for Processing (PCK) / Divisional Engineer for Maintenance Service and Project Coordinator (PCK) / Managing Director (JST)





## Chemical control room: highest availability

With 2,200 employees in four business divisions, INEOS in Cologne is one of the largest locations of the INEOS Group. These business units also include INEOS Oxide, Europe's largest producer of ethylene glycol. The production of this basic chemical as a starting material for various end products – from antifreeze to polyester fibers – is monitored in a modern control room that Jungmann Systemtechnik (JST) designed and installed for the chemical company.

**GO TO PROJECT**



**INEOS**  
THE WORD FOR CHEMICALS

*"The colleagues are impressed by the progress we've made here."*

**Volker Weimer (left) / Stefan Johannsen / Christoph Mock / Waldemar Seibel**

Consultant (JST) / Technician PLT (INEOS) / Technician PLT (INEOS) / Production Engineer  
PLT (INEOS)



## Production control room with completely new equipment

The monitoring of around 2,000 computer systems is the focus of the employees at Audi's so-called "MMS" control room in Ingolstadt. MMS – that stands for Manufacturing Management System. This involves continuous testing of all the steps required to produce the various models. The new control room was equipped by the control room specialists from Jungmann Systemtechnik.

**GO TO PROJECT**





**Audi**

*Positive feedback for JST's services in the Audi control room - from left:*

**Alan Haydt, Gerhard Sporer, Jürgen Schneider (from left to right)**

Head of Maintenance Processes and Systems Engineering / Control Center Coordination /  
Project Manager



## ALL PROJECTS

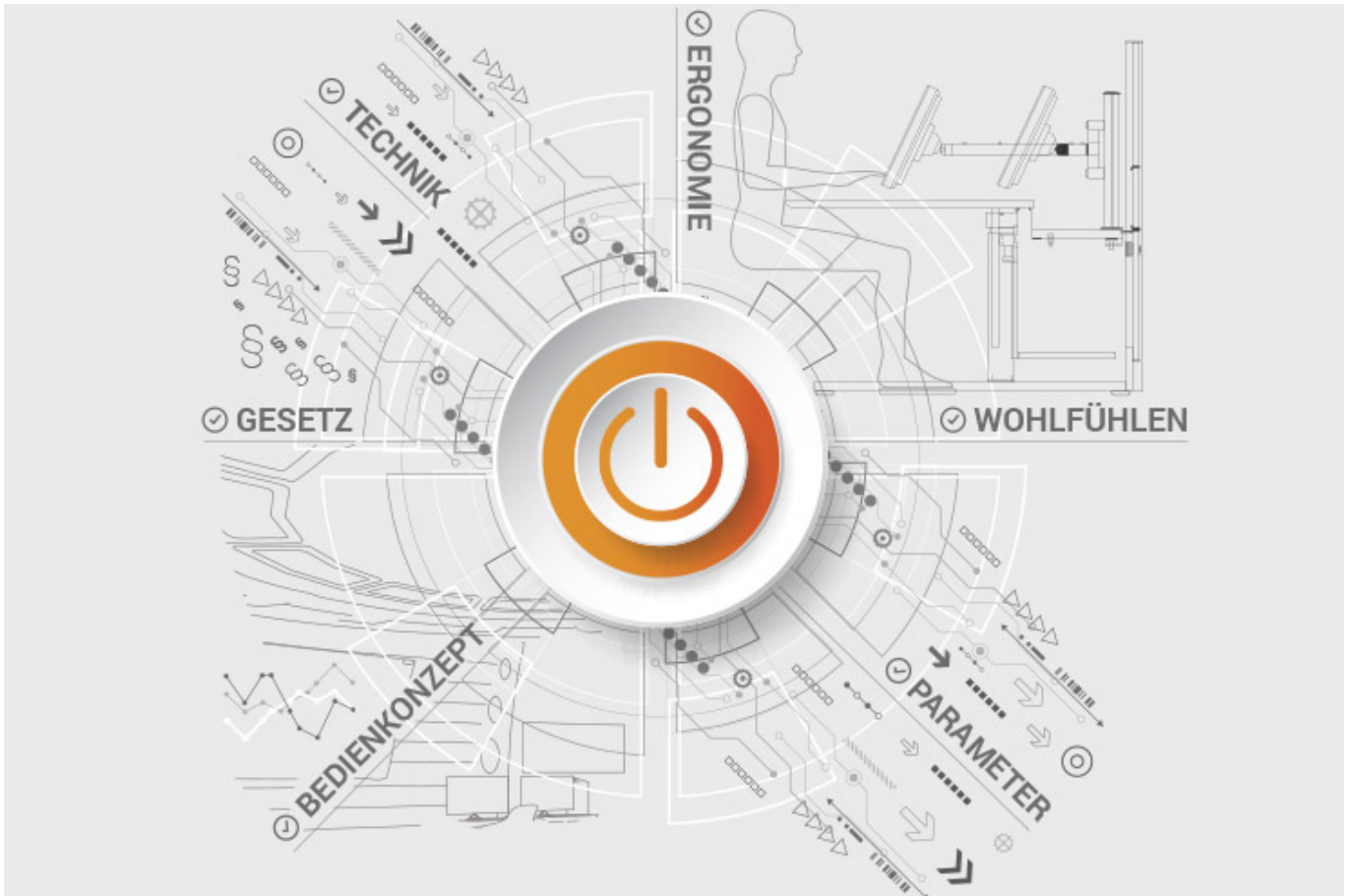
### Documents for download

- [Project report on the new central control room of Infrateuna \(PDF\)](#)
- [Comfortable and intuitive system operation at DREWAG \(PDF\)](#)

**JST product overview: Think of everything!**



## Components for production control room and measuring station



### Analysis and planning of your control room

Are you planning changes in your control room? Or would you like to breathe some fresh air into your control room? Then make use of the proven planning packages or the free online analysis from JST. Our experts will support you in accordance with BAUA: Study and all important standards and guidelines.

[More about the free analysis](#)



## **Large-display technology – react faster!**

Proactively present important information to the right people – before an incident can have a major impact. With scalable large display walls based on LCD displays and Cube technology, we are sure to find the right large-format system for your 24/7 operation!

More about JST large-display technology

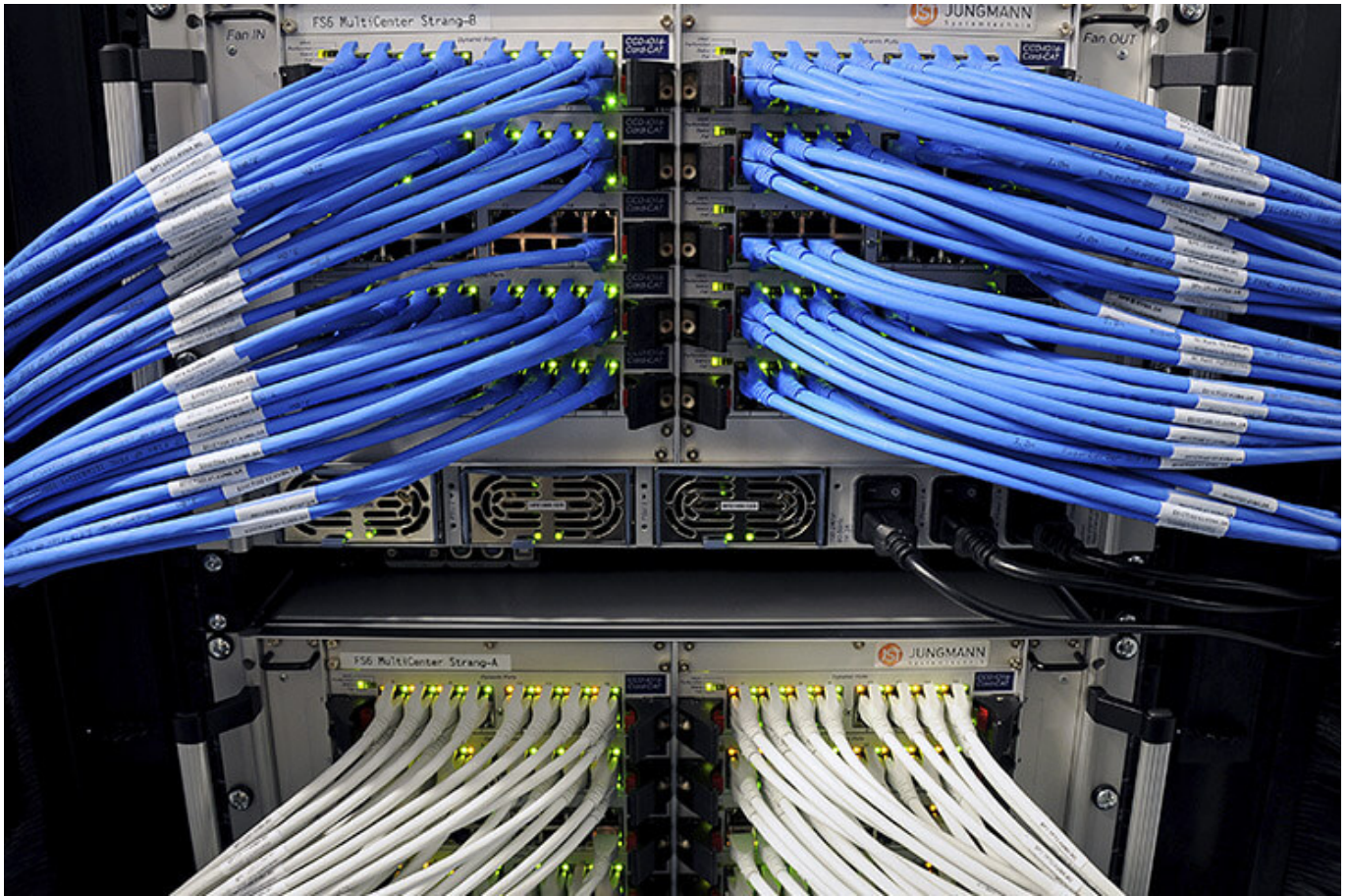


## **myGUI® – User interface for large-format system, workplace & infrastructure**

The intuitive myGUI® user interface in the 3D layout of your control room offers maximum operating convenience for your MultiConsoling® system. With just one click you can operate workstations, monitor walls and infrastructure – always absolutely safe and excellent in stressful situations.

[More about myGUI®](#)





## **MultiConsoling<sup>®</sup> – the command center of the control room**

MultiConsoling<sup>®</sup> is the high-availability control center for connecting all of the signals from your systems to the monitors at the operator's workstation and on the monitor walls. Transmission takes place in real time and does not require any software on your computers.

[More about MultiConsoling<sup>®</sup>](#)



## **Control room furniture: ergonomic operator consoles, Recaro operator's chair, AllMedia Conference System**

You can get furniture and technology from a single source at JST. The highly stable Stratos operator consoles, with height adjustment and suitable surrounding furniture, form an ergonomic base for your control room.

[More about control room furniture](#)





## Large-screen control with graphic controller

With the IP-based graphic controller you can get your monitor wall going. The graphic controller records all video signals over the IP network simultaneously and spreads them out at any position and in any scale on the large display wall.

[More about graphic controllers](#)





## PixelDetection® – the operator's eye

Shorten your reaction times! With PixelDetection®, you will receive the right alarm at exactly the right moment and always be able to see an overview. Proven for many years and repeatedly awarded, PixelDetection® is also known as the “artificial eye of the operator”.

[More about PixelDetection®](#)



## **JST myLogin® – the operator's login**

JST myLogin® is a revolutionary solution for logging on and off centrally and quickly from all operator workstations with your company ID. The login/logout process only takes a few moments. If you want, you can also save your personal layout of the screen contents.

[More about myLogin®](#)

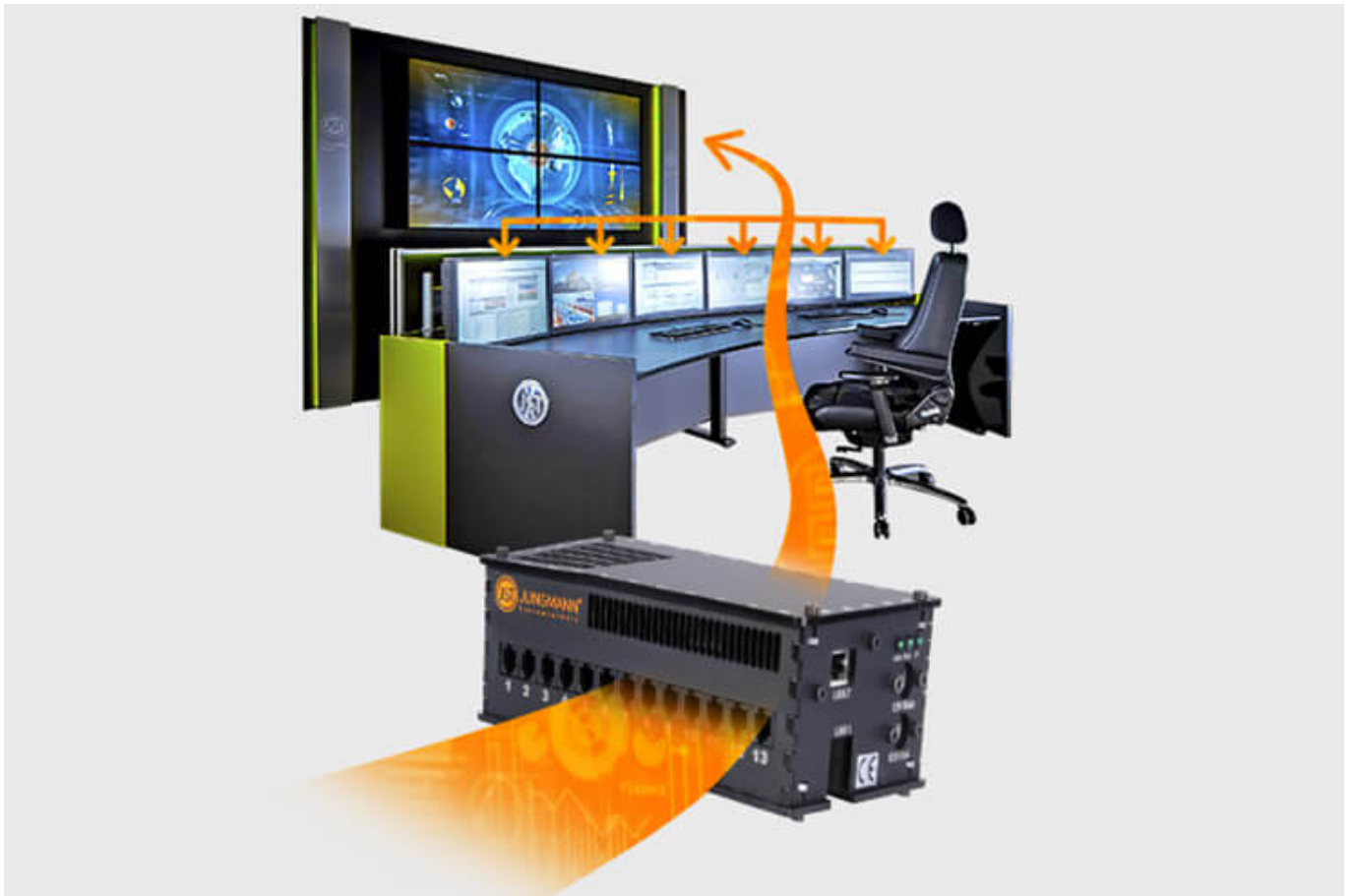


## CockpitView – the operator’s dashboard

Create dashboards with content from different computers on different networks! CockpitView offers you the perfect overview of your most important applications at a glance. With CockpitView you can stay in control and reduce monitors at the workplace or even the large-format system.

[More about CockpitView](#)

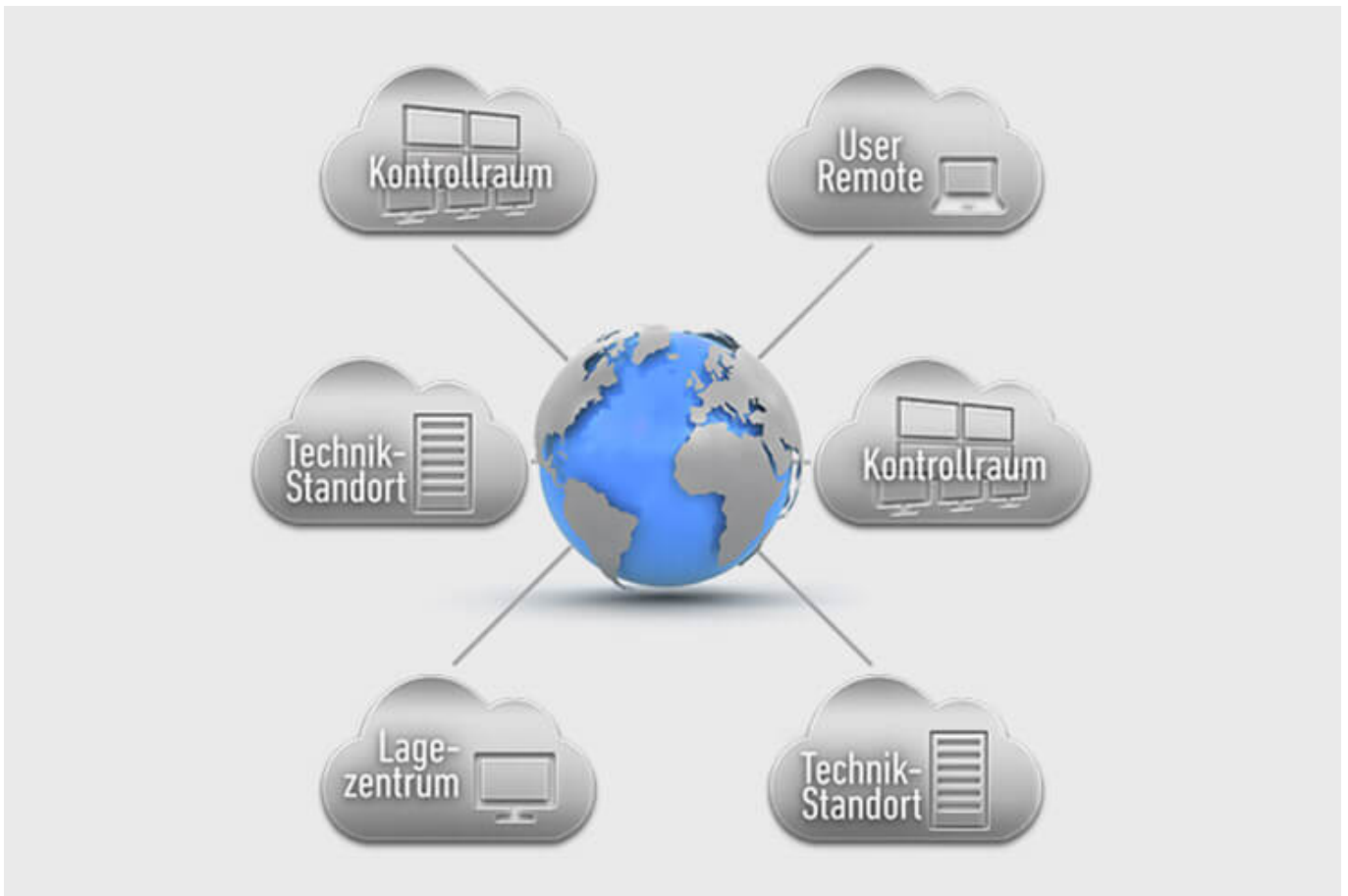




## Automation for Videowalls and operator workstations

With the JST CommandBox, you can monitor circuits, relays, audio signals, and much more, and have them automatically switched on at defined workstations or on the monitor wall when critical values are detected. The range of applications is almost unlimited!

[More about ControlRoom Automation](#)



## **ControlRoom Remote: Connection of distributed systems and locations**

The optional remote interface of JST Systems allows you to visualise and operate remote computers and entire control rooms. Even complex emergency scenarios for backup control rooms are feasible!

[More about ControlRoom Remote](#)



## **Computer relocation and PC remote control**

By relocating computers from the control room to the technical room, you can reduce the thermal load and create more legroom for your employees. Additional advantages are the central administration of the computers as well as the physical access protection in the secured technical room.

[More about computer relocation](#)





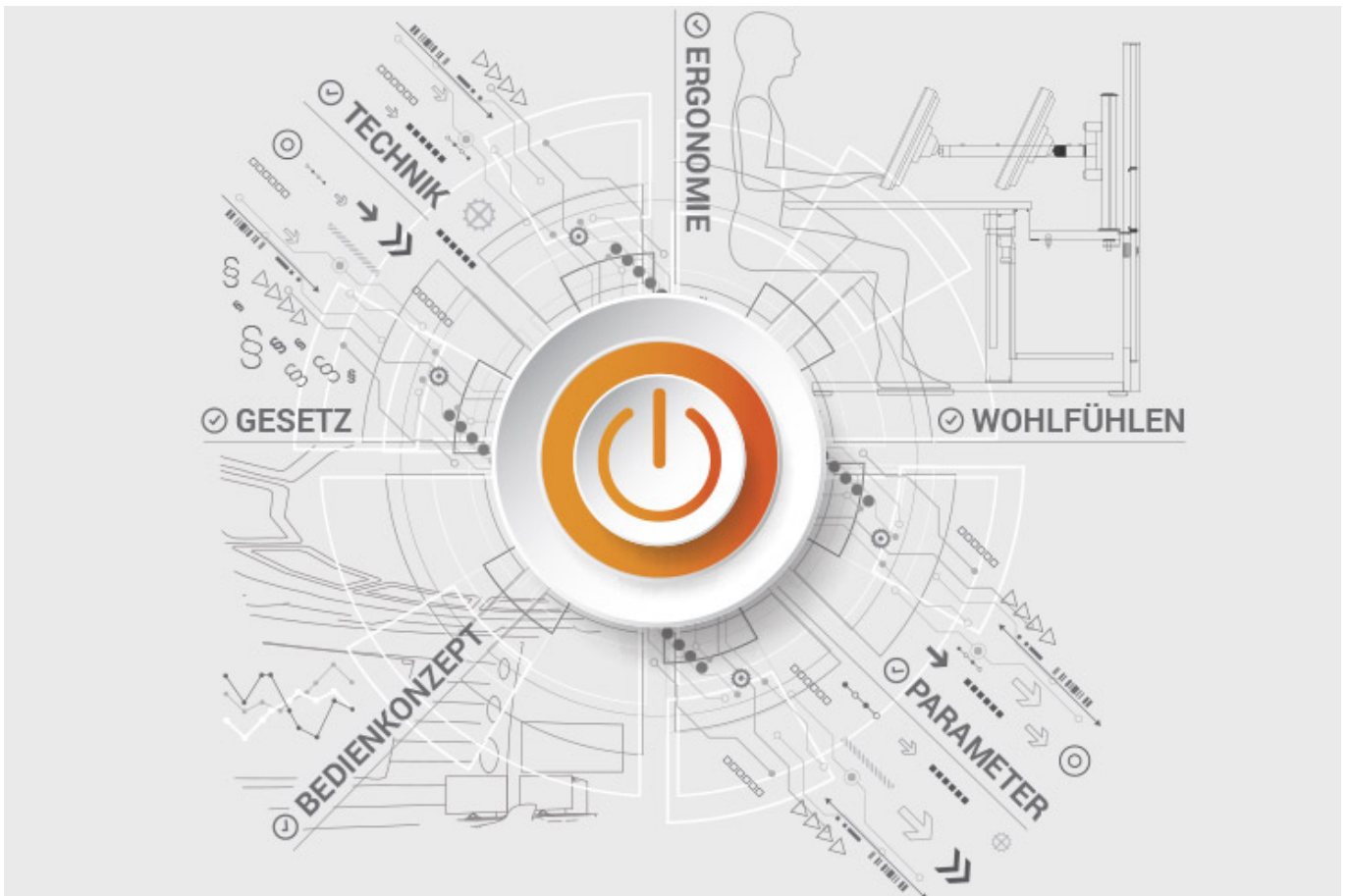
### **Optional service and maintenance packages**

To ensure that your control room stays as available as you need it to be, we offer preventative maintenance packages in various scopes and forms. You will receive customised solutions that will support your market and competitive success.

[More about service from JST](#)

## **JST product overview: Think of everything!**

### **Components for production control room and measuring station**



## Analysis and planning of your control room

Are you planning changes in your control room? Or would you like to breathe some fresh air into your control room? Then make use of the proven planning packages or the free online analysis from JST. Our experts will support you in accordance with BAUA: Study and all important standards and guidelines.

[More about the free analysis](#)



## **Large-display technology – react faster!**

Proactively present important information to the right people – before an incident can have a major impact. With scalable large display walls based on LCD displays and Cube technology, we are sure to find the right large-format system for your 24/7 operation!

More about JST large-display technology

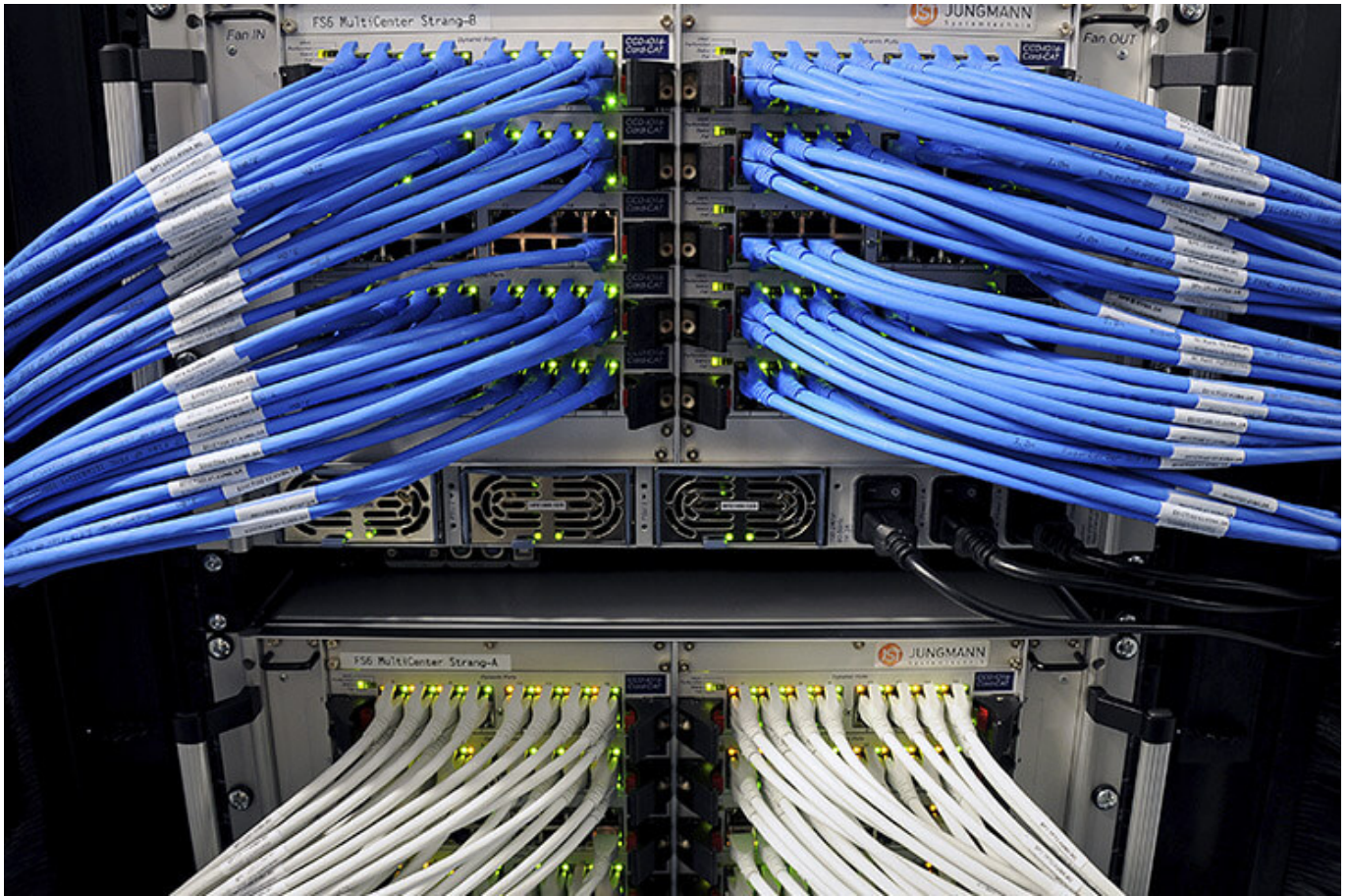


## **myGUI® – User interface for large-format system, workplace & infrastructure**

The intuitive myGUI® user interface in the 3D layout of your control room offers maximum operating convenience for your MultiConsoling® system. With just one click you can operate workstations, monitor walls and infrastructure – always absolutely safe and excellent in stressful situations.

[More about myGUI®](#)





## **MultiConsoling<sup>®</sup> – the command center of the control room**

MultiConsoling<sup>®</sup> is the high-availability control center for connecting all of the signals from your systems to the monitors at the operator's workstation and on the monitor walls. Transmission takes place in real time and does not require any software on your computers.

[More about MultiConsoling<sup>®</sup>](#)



## **Control room furniture: ergonomic operator consoles, Recaro operator's chair, AllMedia Conference System**

You can get furniture and technology from a single source at JST. The highly stable Stratos operator consoles, with height adjustment and suitable surrounding furniture, form an ergonomic base for your control room.

[More about control room furniture](#)





## Large-screen control with graphic controller

With the IP-based graphic controller you can get your monitor wall going. The graphic controller records all video signals over the IP network simultaneously and spreads them out at any position and in any scale on the large display wall.

[More about graphic controllers](#)



## PixelDetection® – the operator's eye

Shorten your reaction times! With PixelDetection®, you will receive the right alarm at exactly the right moment and always be able to see an overview. Proven for many years and repeatedly awarded, PixelDetection® is also known as the “artificial eye of the operator”.

[More about PixelDetection®](#)





## **JST myLogin® – the operator's login**

JST myLogin® is a revolutionary solution for logging on and off centrally and quickly from all operator workstations with your company ID. The login/logout process only takes a few moments. If you want, you can also save your personal layout of the screen contents.

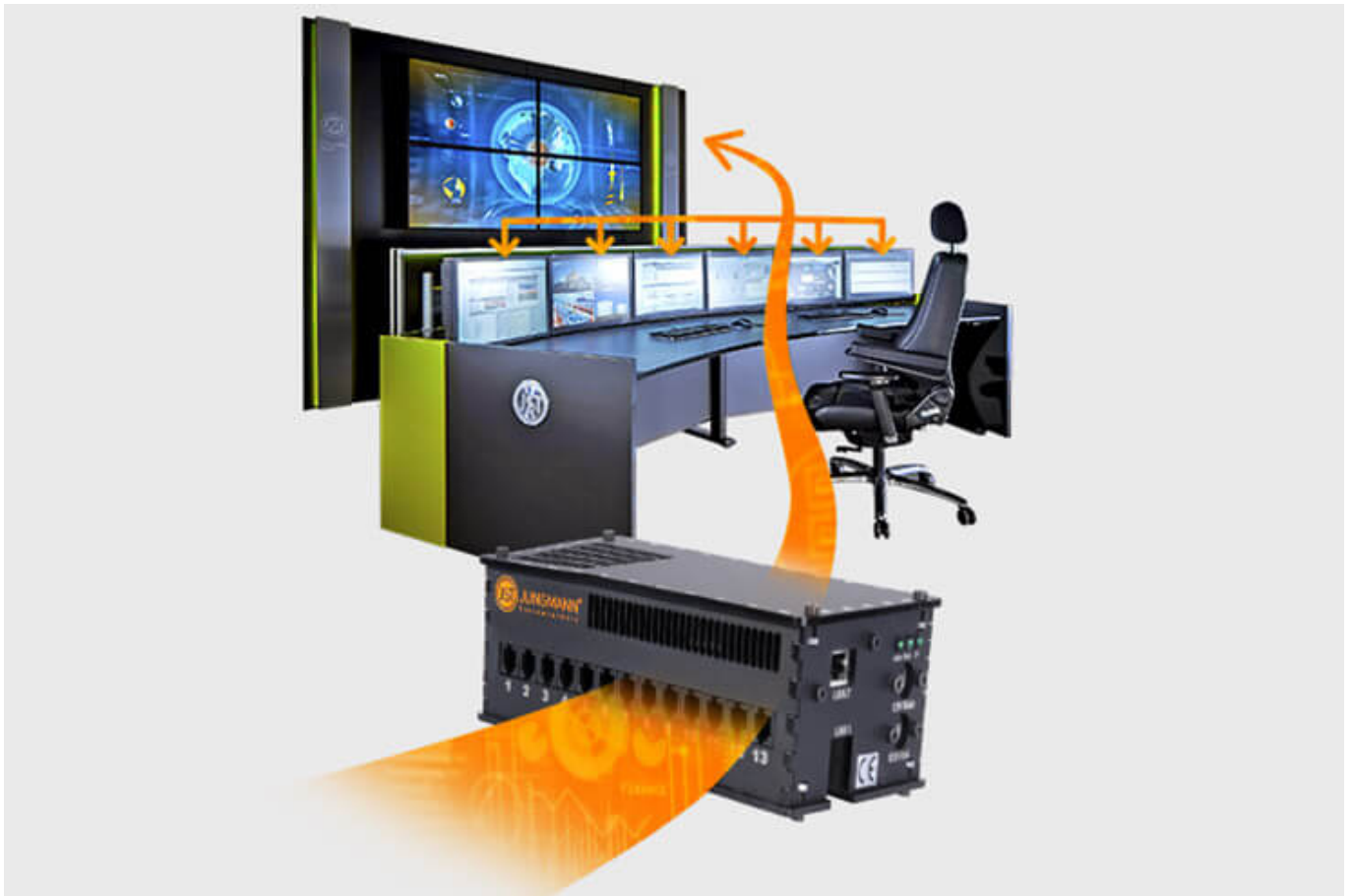
[More about myLogin®](#)



## CockpitView – the operator’s dashboard

Create dashboards with content from different computers on different networks! CockpitView offers you the perfect overview of your most important applications at a glance. With CockpitView you can stay in control and reduce monitors at the workplace or even the large-format system.

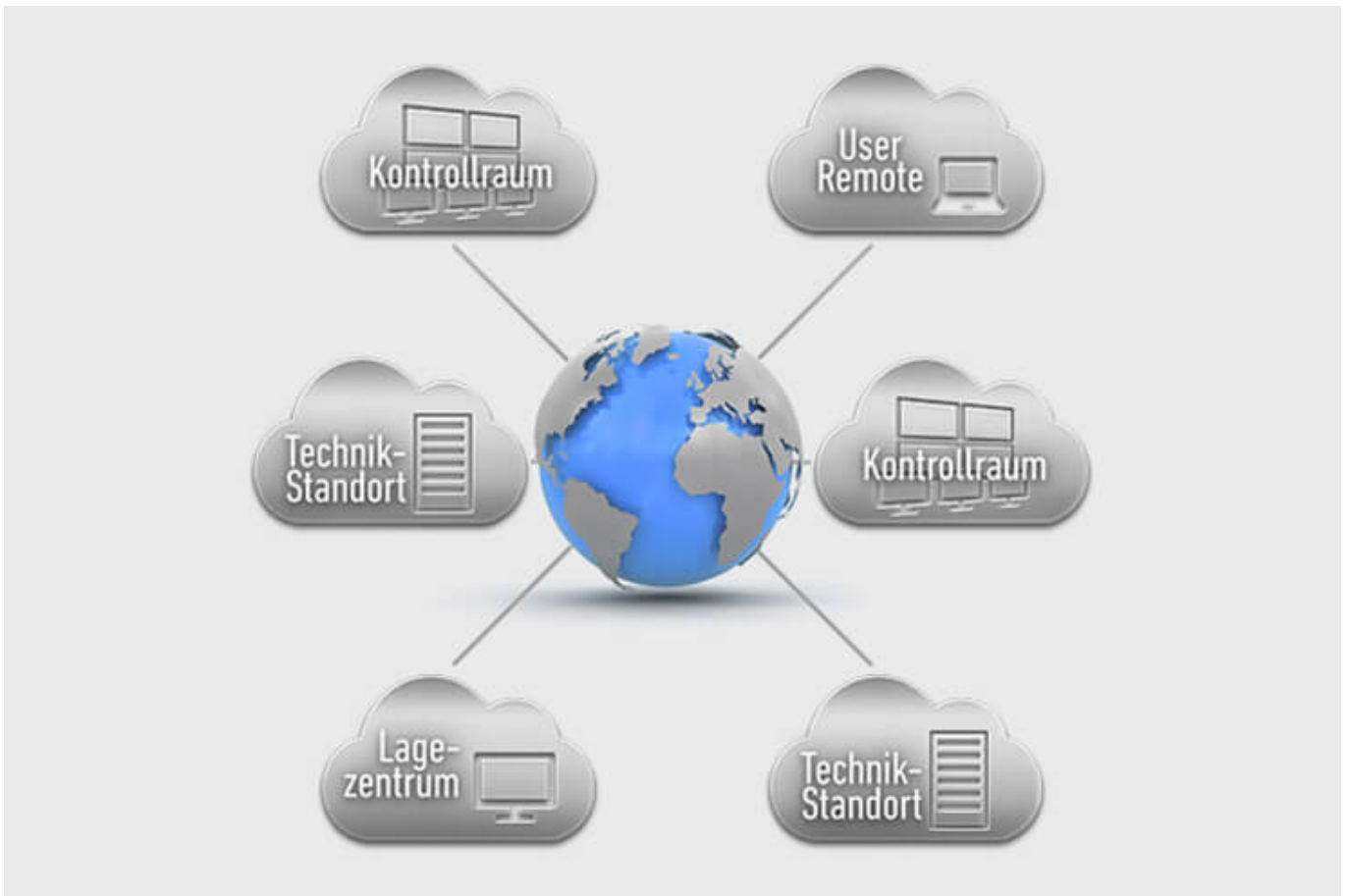
[More about CockpitView](#)



## Automation for Videowalls and operator workstations

With the JST CommandBox, you can monitor circuits, relays, audio signals, and much more, and have them automatically switched on at defined workstations or on the monitor wall when critical values are detected. The range of applications is almost unlimited!

[More about ControlRoom Automation](#)



## **ControlRoom Remote: Connection of distributed systems and locations**

The optional remote interface of JST Systems allows you to visualise and operate remote computers and entire control rooms. Even complex emergency scenarios for backup control rooms are feasible!

[More about ControlRoom Remote](#)





## **Computer relocation and PC remote control**

By relocating computers from the control room to the technical room, you can reduce the thermal load and create more legroom for your employees. Additional advantages are the central administration of the computers as well as the physical access protection in the secured technical room.

[More about computer relocation](#)

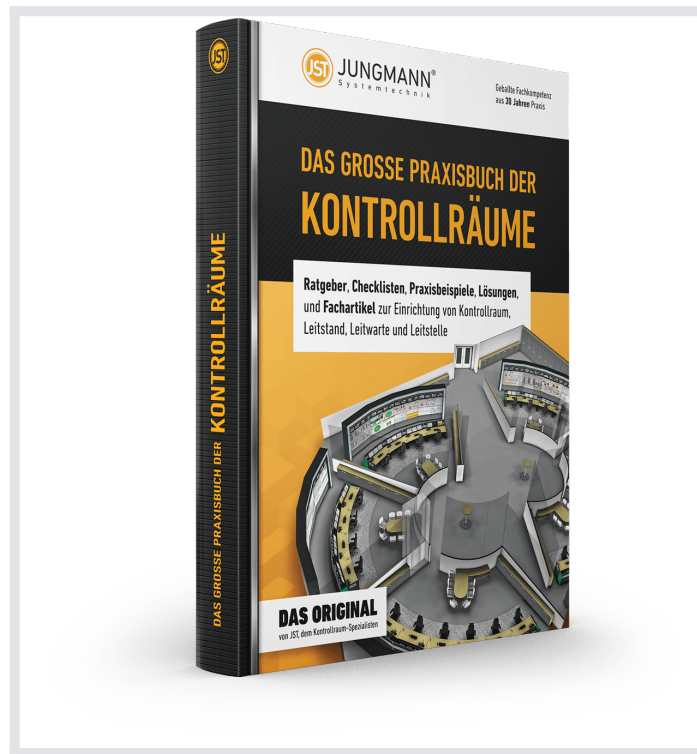


### Optional service and maintenance packages

To ensure that your control room stays as available as you need it to be, we offer preventative maintenance packages in various scopes and forms. You will receive customised solutions that will support your market and competitive success.

[More about service from JST](#)

## **THE GREAT PRACTICAL BOOK OF CONTROL ROOMS**



**Guidebooks, checklists, practical examples, solutions and technical articles** for the installation of control rooms, control stations and control centers

### **REQUEST FREE OF CHARGE**

The great practical book of control rooms is free of charge for JST customers and interested parties.

### **What would you like to do next?**

I would like

- request the free control room practice manual
- a callback for a non-binding consultation
- visit the control room simulator in Buxtehude
- experience a digital 360° tour in a control room
- learn more about control rooms at the ko:mon congress

We will gladly answer your questions about our solutions

**+49 4161 54044-0**

---

You are currently viewing a placeholder content from **YouTube**. To access the actual content, click the button below. Please note that doing so will share data with third-party providers.

[More Information](#)

[Unblock content](#) [Accept required service and unblock content](#)