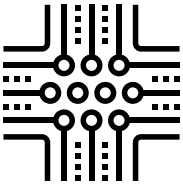


Monitoring Room for critical infrastructures (CI)

Our complex networked environment presents us with numerous challenges. The trend towards globalisation is continuing unabated, physical and digital IT infrastructures are closely interrelated. This makes our economy dependent on a **secure and high availability infrastructure (CI)**.

The availability of this critical infrastructure has an impact on energy suppliers, transport and logistics companies, hospitals, information and communication networks and media companies. Criminal activities, such as hacker attacks, are increasingly becoming a threat, and critical infrastructures require special protection. With monitoring rooms from JST, you will even be able to monitor **complex networks and infrastructures, proactively detect faults** and react quickly!

REQUEST A NON-BINDING OFFER



- Large-display technology: Proactive monitor walls to shorten reaction times
- Control: In real time, independent of the IP network and without software
- 24/7 SPOC for communication with the central reporting point

- Connection of crisis rooms and standby teams
- Highly stable monitoring room consoles "Made in Germany"
- Quality: Made in Germany and developed for 24/7 operation

R R
Z _



otto group



STADT  FRANKFURT AM MAIN

plusnet
Ein Unternehmen der QSC AG

LVM 
VERSICHERUNG

HZB Helmholtz
Zentrum Berlin

 **esa**

Practical examples

Is your company considered a "critical infrastructure" as defined by the EU Directives 2008/114/EC and would you like to bring the most important monitoring information together with the specialists in a CI control room or SPOC (single point of contact)? Here at JST you will find the perfect solution! We have numerous customers in the "critical" sector and our systems have been used for high-availability system monitoring for many years. Have a look at our project reports and you are sure to find a project that comes very close to the requirements for your new CI control room.

We will be happy to put you in touch with the appropriate contact person.

Innovative control room concept

Stadtwerke Ratingen has upgraded and is taking its already high security standards to a new level. In the central control room of the local cross-linked energy supplier, the operators are now working with state-of-the-art, future-oriented technology from Jungmann Systemtechnik. The network management of the most important distribution networks and plants of the public utilities as well as the monitoring and control of further company owned plants that are relevant to the system will be carried out more safely and efficiently with the new system.

GO TO PROJECT



**Stadtwerke
Ratingen** 

"With the help of the large display wall, the work here in the control room can be handled much more easily. My team is really impressed."

Christoph Wirthmüller

Project Manager

<https://www.jungmann.de/>



New control room consolidates the city's IT services

All central IT services are consolidated and monitored under one roof. Employees from various IT departments who work side by side in crisis situations. This vision has been turned into reality with the new IT control room of the Frankfurt Office for Information and Communication Technology. Technical equipment and furniture from Jungmann Systemtechnik support the trouble-free operation of IT services in the City of Frankfurt am Main.

GO TO PROJECT



STADT  FRANKFURT AM MAIN

On the cooperation with JST: "The professionalism impressed me from start to finish."

Sascha Höhn

Project Manager



Most modern measuring station for PCK refinery

Every year, PCK Raffinerie GmbH processes around 12 million tonnes of crude oil into petroleum and petrochemical products. All production facilities were monitored and controlled via a central measuring station furnishing from 1993, which had become too small and unmanageable over the years. As a result, those responsible decided to replace it with an ultra-modern, approximately 1,000 m² control room. Jungmann Systemtechnik GmbH & Co. KG (JST) was entrusted with the interior design and technical equipment.

GO TO PROJECT



"Compared to the satellite measuring stations and also to the old central measuring station, we have been able to improve in every aspect, be it acoustics, lighting, air conditioning, ergonomics or user-friendliness".

Eric Sieger, Thomas Taube, Carsten Jungmann (from left to right)

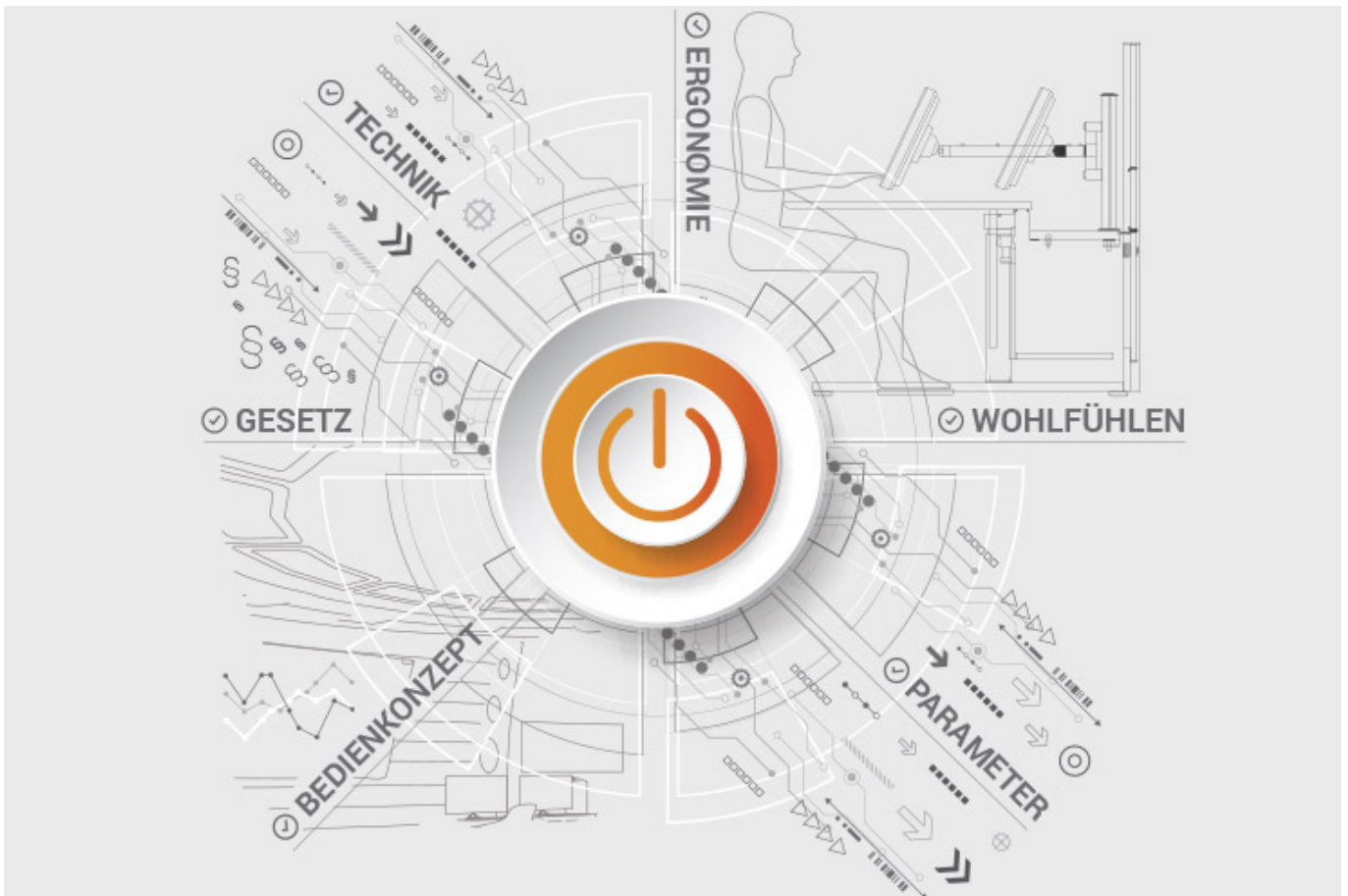
Chief Divisional Engineer for Processing (PCK) / Divisional Engineer for Maintenance Service and Project Coordinator (PCK) / Managing Director (JST)



ALL PROJECTS

JST product overview: Think of everything!

Components for your control room



Analysis and planning of your control room

Are you planning changes in your control room? Or would you like to breathe some fresh air into your control room? Then make use of the proven [planning packages](#) or the free [online analysis](#) from JST. Our experts will support you in accordance with [BAUA: Study](#) and all important standards and guidelines.

[More about the free analysis](#)



Large-display technology – react faster!

Proactively present important information to the right people – before an incident can have a major impact. With scalable large display walls based on LCD displays and Cube technology, we are sure to find the right large-format system for your 24/7 operation!

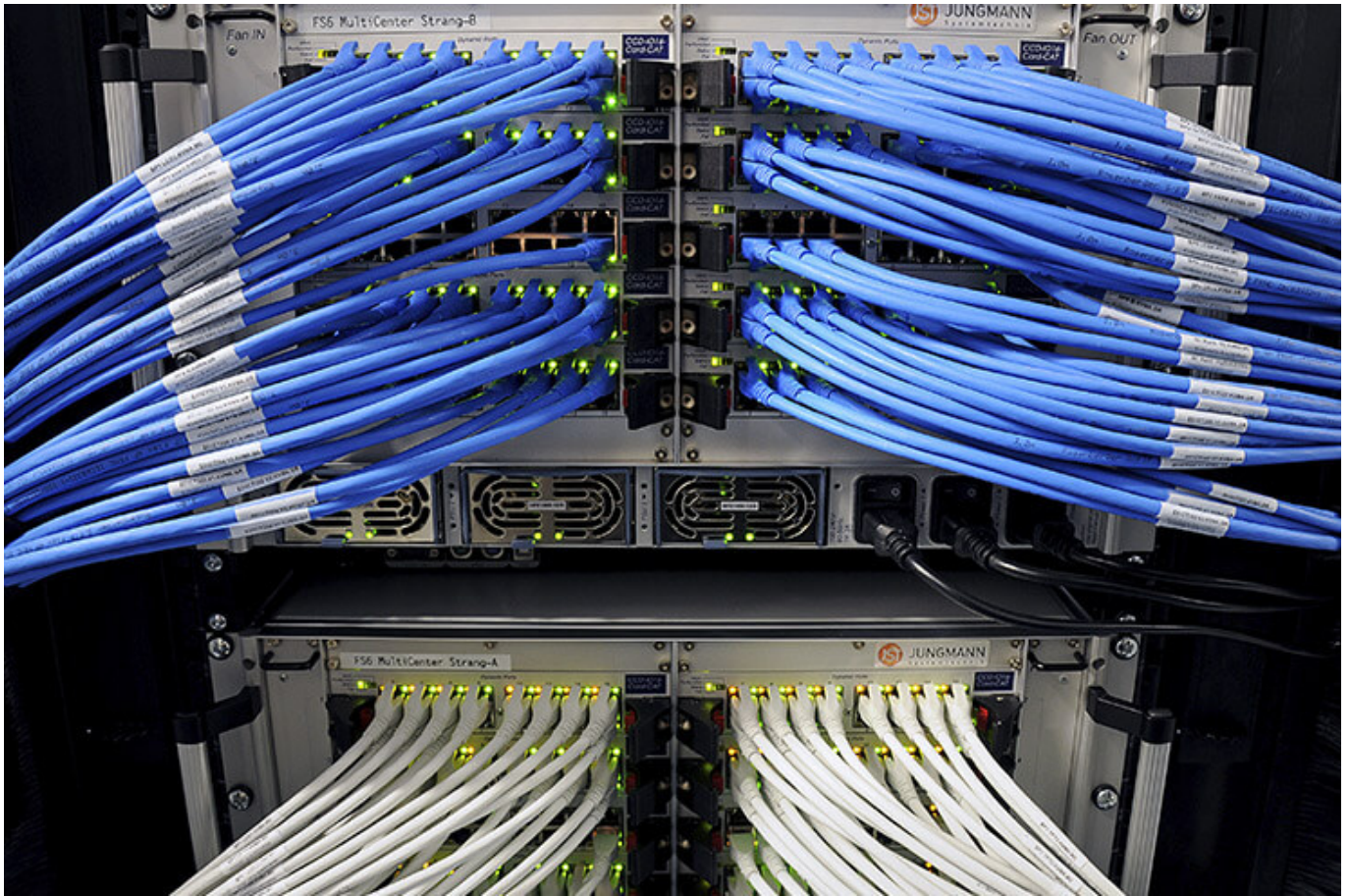
More about JST large-display technology



myGUI® – User interface for large-format system, workplace & infrastructure

The intuitive myGUI® user interface in the 3D layout of your control room offers maximum operating convenience for your MultiConsoling® system. With just one click you can operate workstations, monitor walls and infrastructure – always absolutely safe and excellent in stressful situations.

[More about myGUI®](#)



MultiConsoling® – the command center of the control room

MultiConsoling® is the high-availability control center for connecting all of the signals from your systems to the monitors at the operator's workstation and on the monitor walls. Transmission takes place in real time and does not require any software on your computers.

[More about MultiConsoling®](#)



Control room furniture: ergonomic operator consoles, Recaro operator's chair, AllMedia Conference System

You can get furniture and technology from a single source at JST. The highly stable Stratos operator consoles, with height adjustment and suitable surrounding furniture, form an ergonomic base for your control room.

[More about control room furniture](#)



Large-screen control with graphic controller

With the IP-based graphic controller you can get your monitor wall going. The graphic controller records all video signals over the IP network simultaneously and spreads them out at any position and in any scale on the large display wall.

[More about graphic controllers](#)



PixelDetection® – the operator's eye

Shorten your reaction times! With PixelDetection®, you will receive the right alarm at exactly the right moment and always be able to see an overview. Proven for many years and repeatedly awarded, PixelDetection® is also known as the “artificial eye of the operator”.

[More about PixelDetection®](#)



JST myLogin® – the operator's login

JST myLogin® is a revolutionary solution for logging on and off centrally and quickly from all operator workstations with your company ID. The login/logout process only takes a few moments. If you want, you can also save your personal layout of the screen contents.

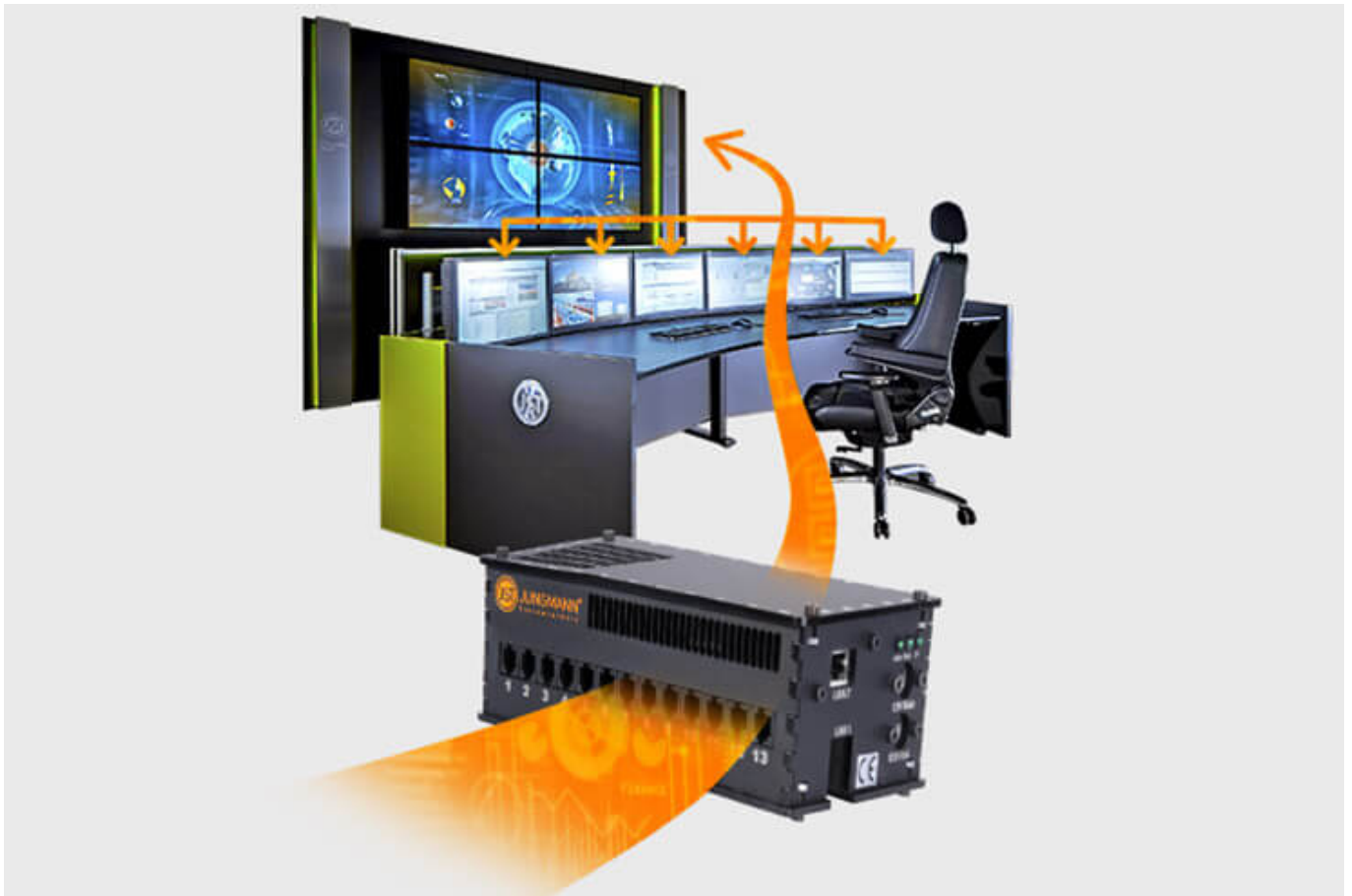
[More about myLogin®](#)



CockpitView – the operator’s dashboard

Create dashboards with content from different computers on different networks! CockpitView offers you the perfect overview of your most important applications at a glance. With CockpitView you can stay in control and reduce monitors at the workplace or even the large-format system.

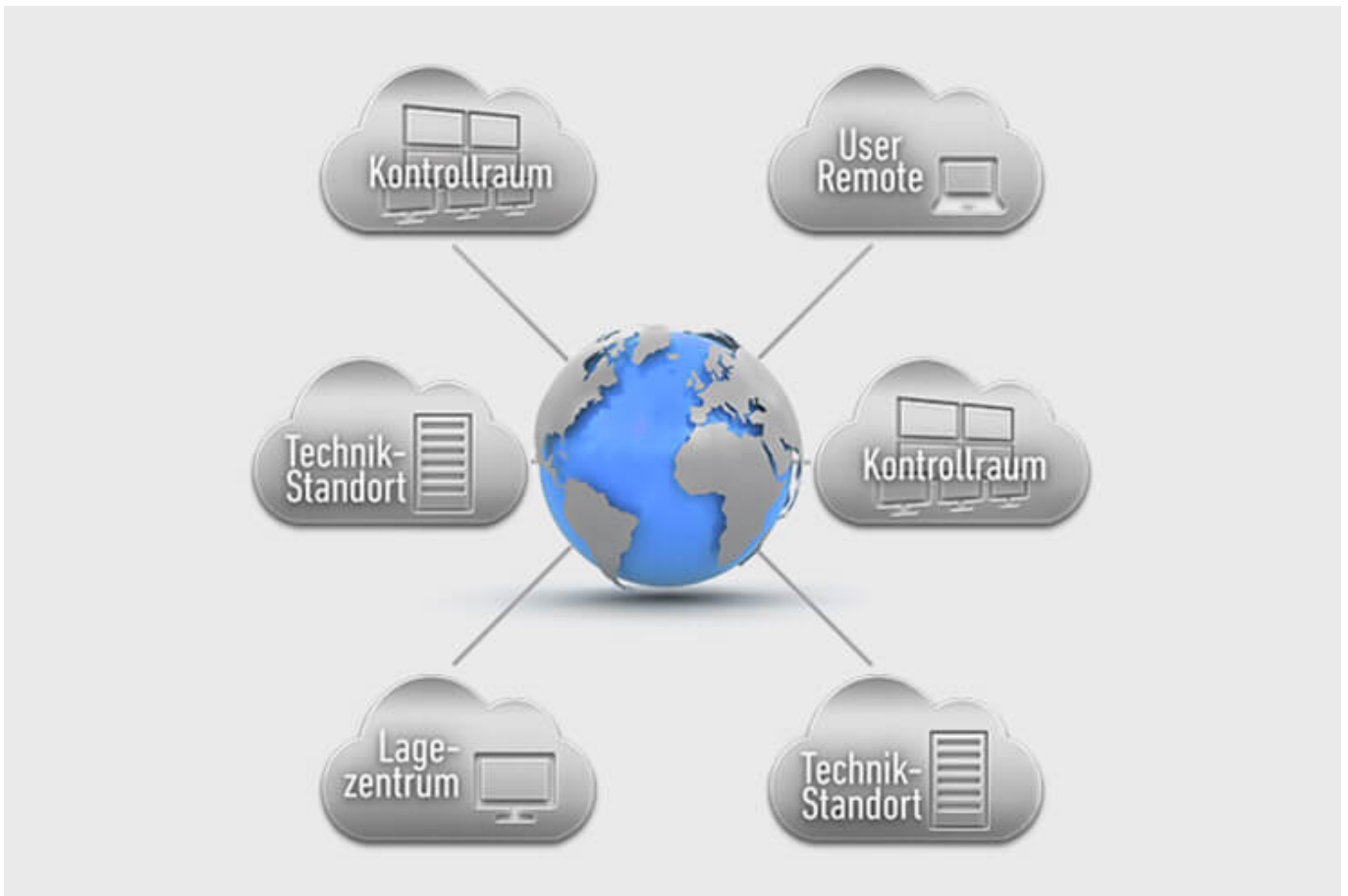
[More about CockpitView](#)



Automation for Videowalls and operator workstations

With the JST CommandBox, you can monitor circuits, relays, audio signals, and much more, and have them automatically switched on at defined workstations or on the monitor wall when critical values are detected. The range of applications is almost unlimited!

[More about ControlRoom Automation](#)



ControlRoom Remote: Connection of distributed systems and locations

The optional remote interface of JST Systems allows you to visualise and operate remote computers and entire control rooms. Even complex emergency scenarios for backup control rooms are feasible!

[More about ControlRoom Remote](#)



Computer relocation and PC remote control

By relocating computers from the control room to the technical room, you can reduce the thermal load and create more legroom for your employees. Additional advantages are the central administration of the computers as well as the physical access protection in the secured technical room.

[More about computer relocation](#)



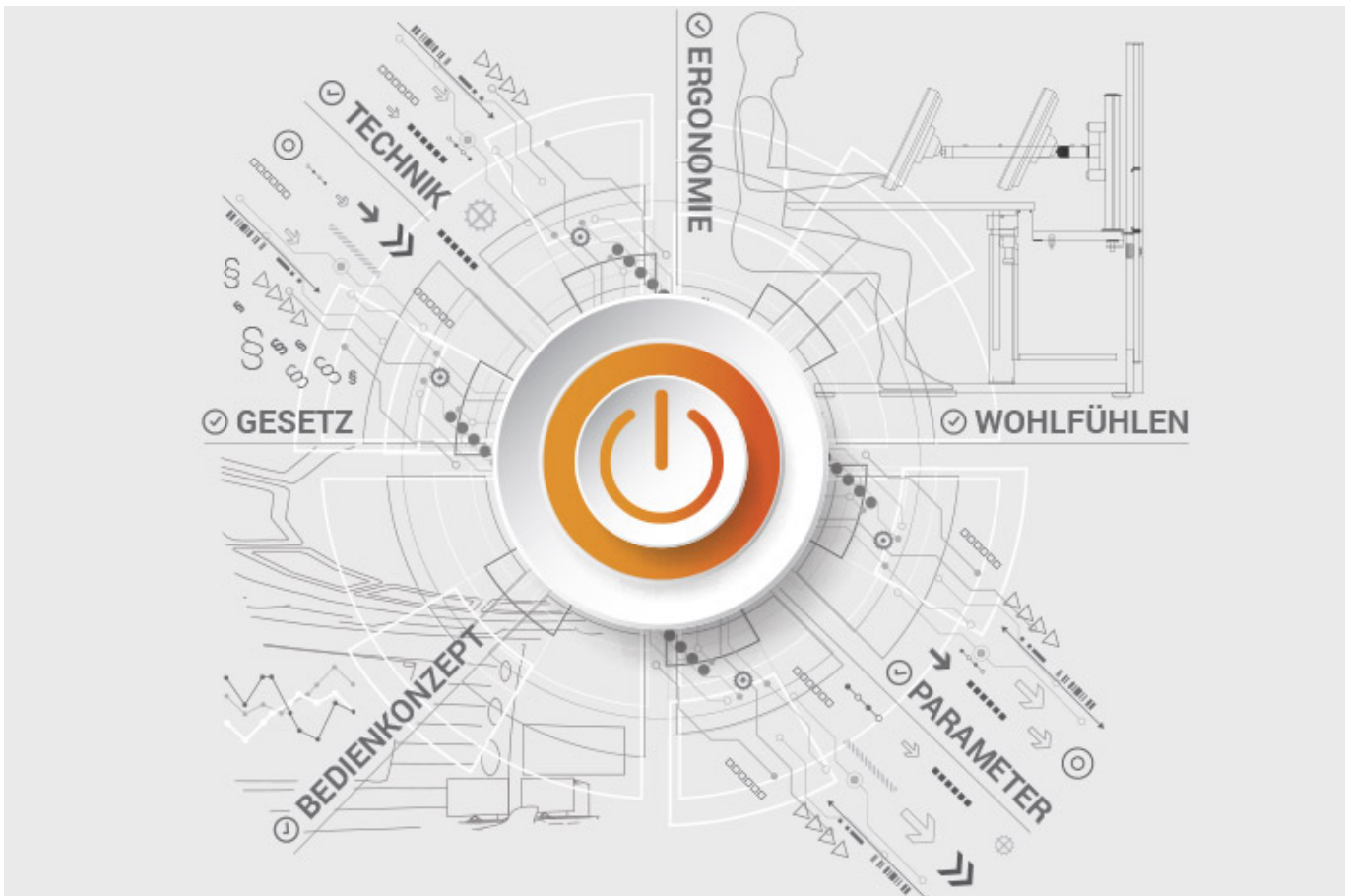
Optional service and maintenance packages

To ensure that your control room stays as available as you need it to be, we offer preventative maintenance packages in various scopes and forms. You will receive customised solutions that will support your market and competitive success.

[More about service from JST](#)

JST product overview: Think of everything!

Components for your control room



Analysis and planning of your control room

Are you planning changes in your control room? Or would you like to breathe some fresh air into your control room? Then make use of the proven planning packages or the free online analysis from JST. Our experts will support you in accordance with BAUA: Study and all important standards and guidelines.

[More about the free analysis](#)



Large-display technology – react faster!

Proactively present important information to the right people – before an incident can have a major impact. With scalable large display walls based on LCD displays and Cube technology, we are sure to find the right large-format system for your 24/7 operation!

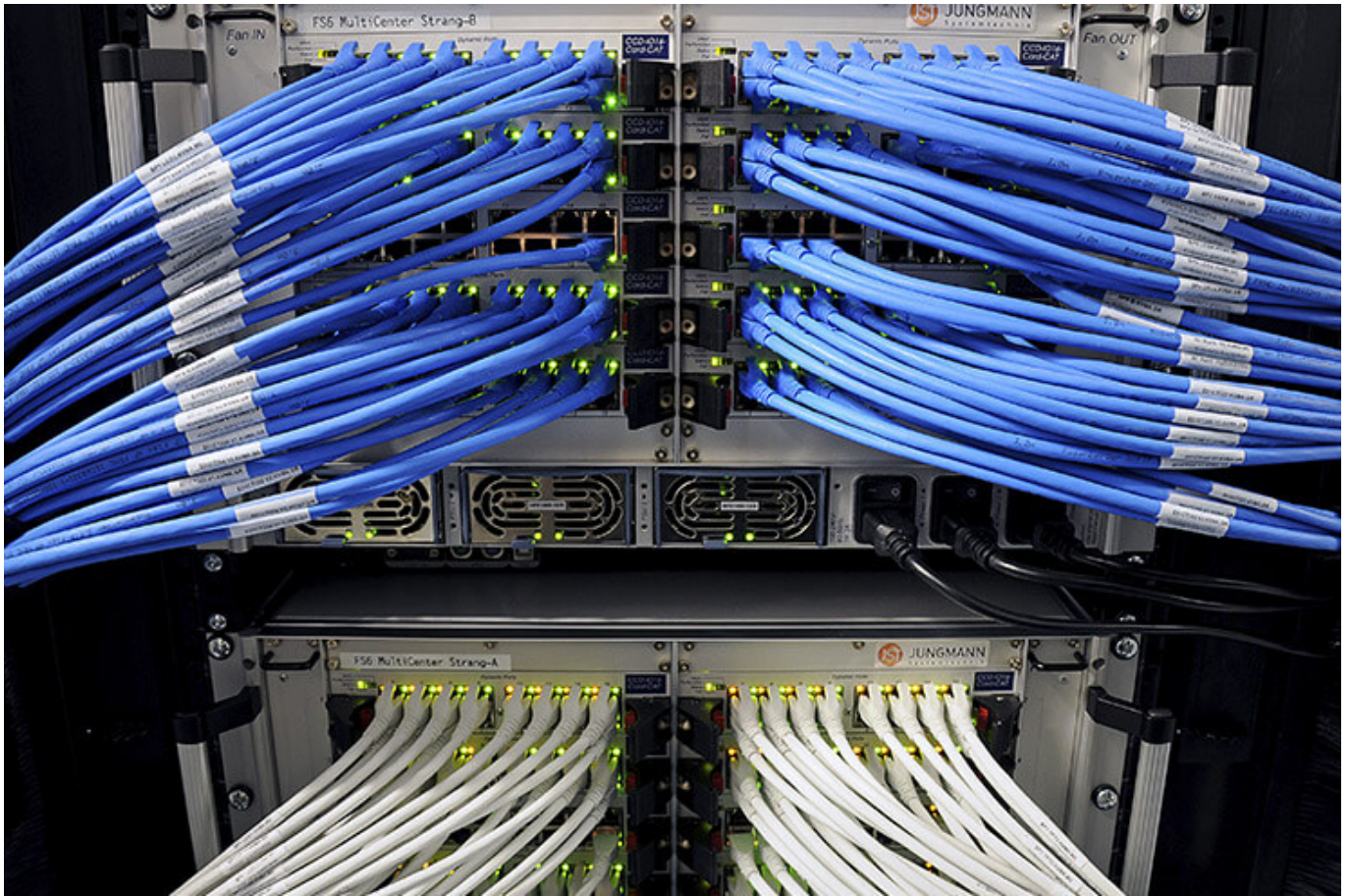
More about JST large-display technology



myGUI® – User interface for large-format system, workplace & infrastructure

The intuitive myGUI® user interface in the 3D layout of your control room offers maximum operating convenience for your MultiConsoling® system. With just one click you can operate workstations, monitor walls and infrastructure – always absolutely safe and excellent in stressful situations.

[More about myGUI®](#)



MultiConsoling® – the command center of the control room

MultiConsoling® is the high-availability control center for connecting all of the signals from your systems to the monitors at the operator's workstation and on the monitor walls. Transmission takes place in real time and does not require any software on your computers.

[More about MultiConsoling®](#)



Control room furniture: ergonomic operator consoles, Recaro operator's chair, AllMedia Conference System

You can get furniture and technology from a single source at JST. The highly stable Stratos operator consoles, with height adjustment and suitable surrounding furniture, form an ergonomic base for your control room.

[More about control room furniture](#)



Large-screen control with graphic controller

With the IP-based graphic controller you can get your monitor wall going. The graphic controller records all video signals over the IP network simultaneously and spreads them out at any position and in any scale on the large display wall.

[More about graphic controllers](#)



PixelDetection® – the operator's eye

Shorten your reaction times! With PixelDetection®, you will receive the right alarm at exactly the right moment and always be able to see an overview. Proven for many years and repeatedly awarded, PixelDetection® is also known as the “artificial eye of the operator”.

[More about PixelDetection®](#)



JST myLogin® – the operator's login

JST myLogin® is a revolutionary solution for logging on and off centrally and quickly from all operator workstations with your company ID. The login/logout process only takes a few moments. If you want, you can also save your personal layout of the screen contents.

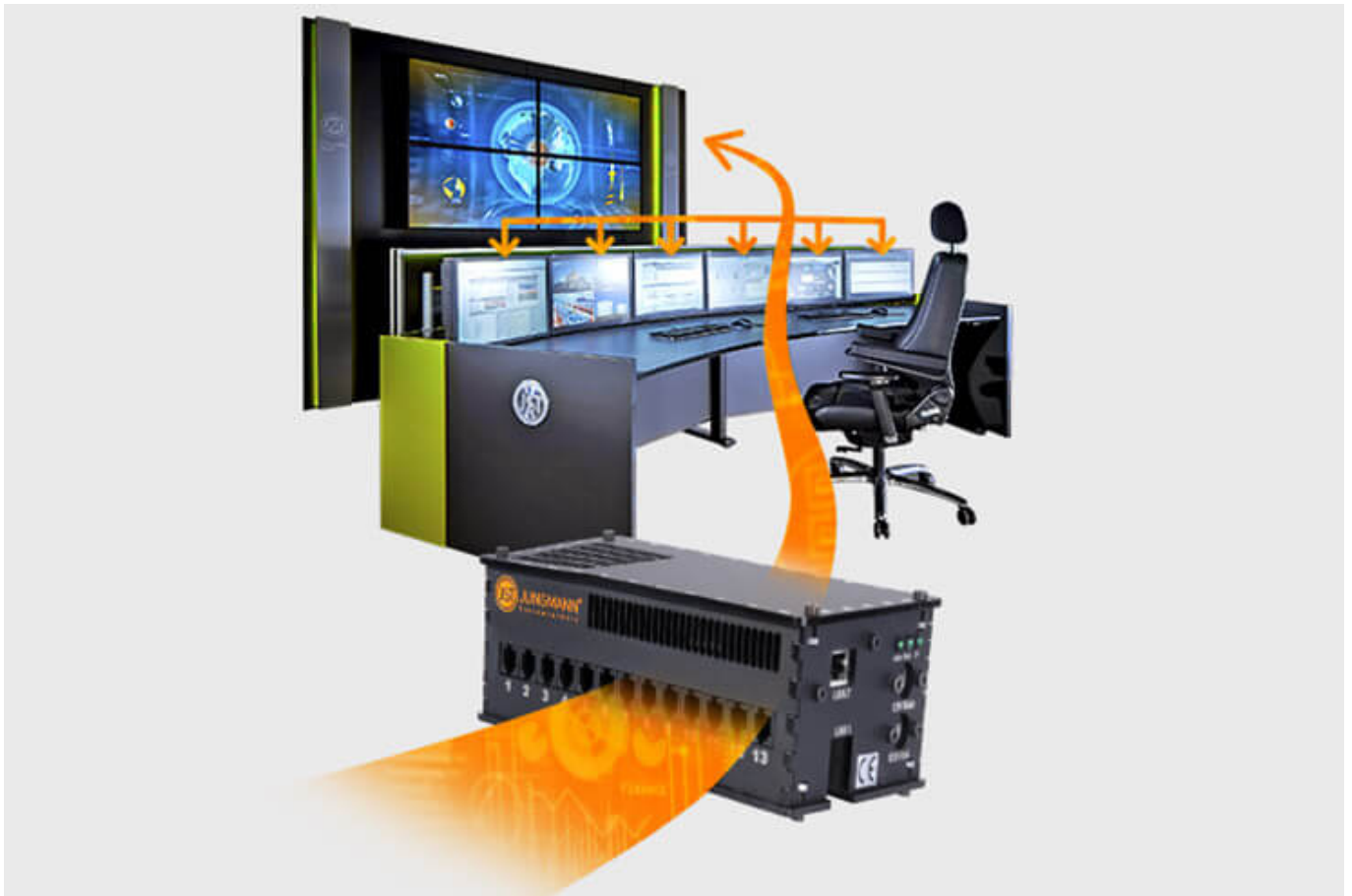
[More about myLogin®](#)



CockpitView – the operator’s dashboard

Create dashboards with content from different computers on different networks! CockpitView offers you the perfect overview of your most important applications at a glance. With CockpitView you can stay in control and reduce monitors at the workplace or even the large-format system.

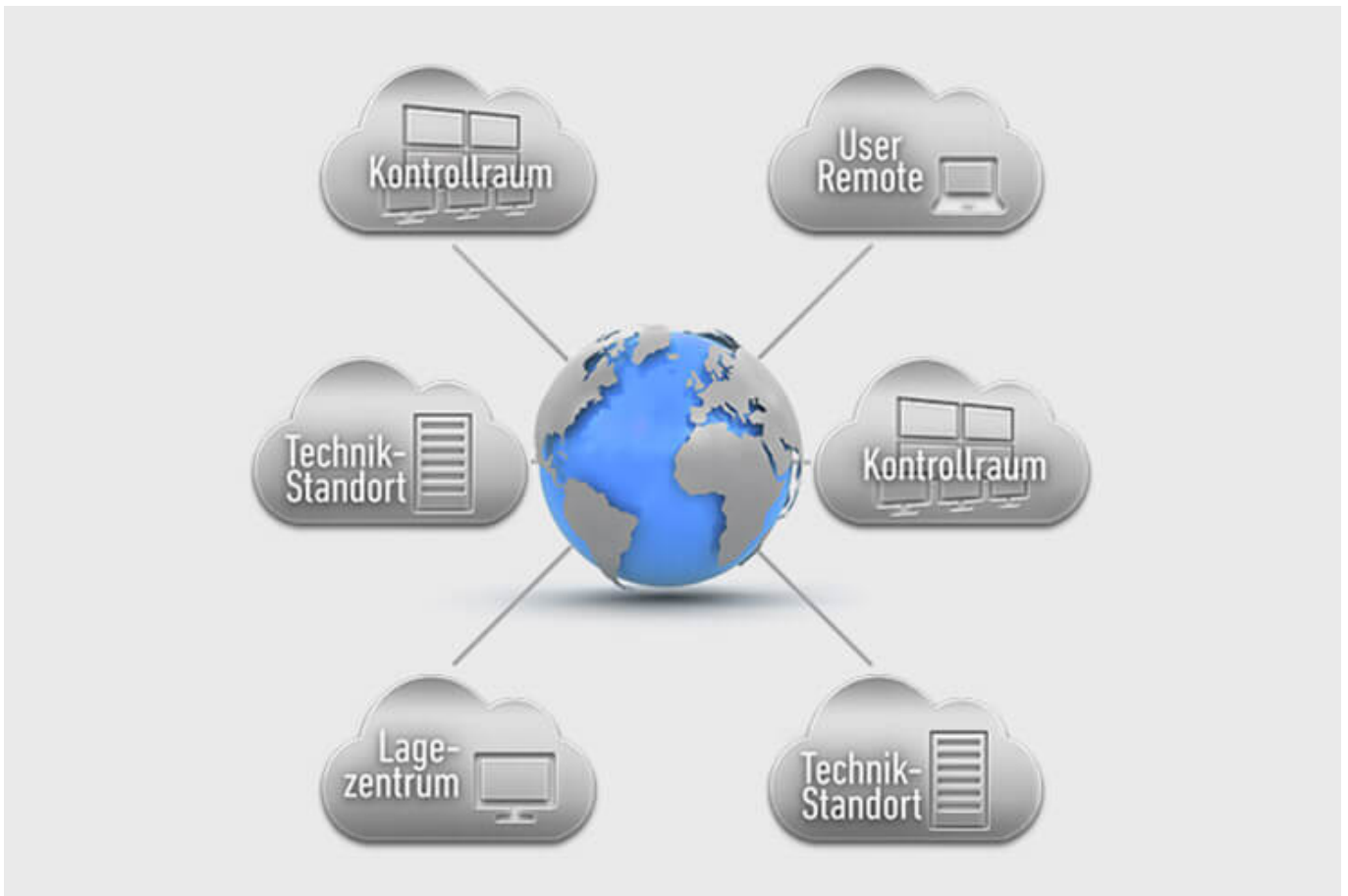
[More about CockpitView](#)



Automation for Videowalls and operator workstations

With the JST CommandBox, you can monitor circuits, relays, audio signals, and much more, and have them automatically switched on at defined workstations or on the monitor wall when critical values are detected. The range of applications is almost unlimited!

[More about ControlRoom Automation](#)



ControlRoom Remote: Connection of distributed systems and locations

The optional remote interface of JST Systems allows you to visualise and operate remote computers and entire control rooms. Even complex emergency scenarios for backup control rooms are feasible!

[More about ControlRoom Remote](#)



Computer relocation and PC remote control

By relocating computers from the control room to the technical room, you can reduce the thermal load and create more legroom for your employees. Additional advantages are the central administration of the computers as well as the physical access protection in the secured technical room.

[More about computer relocation](#)

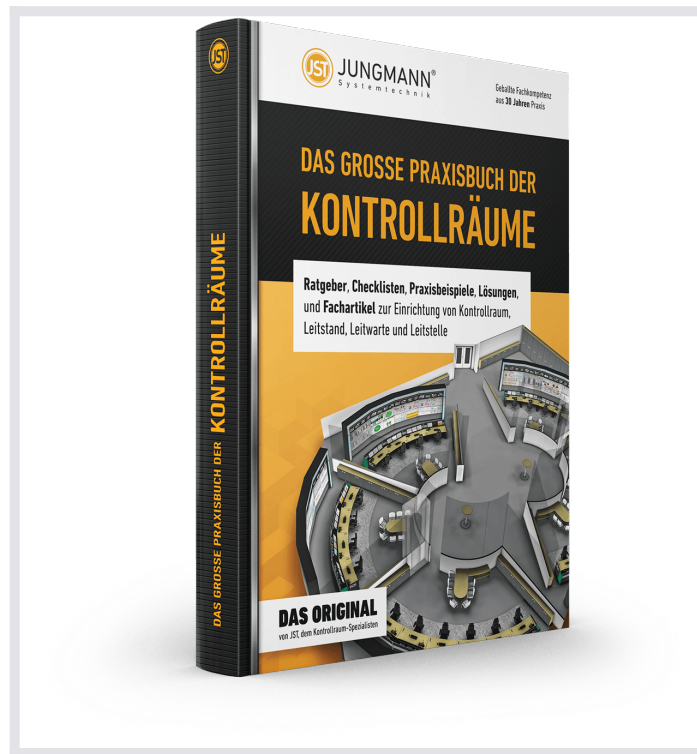


Optional service and maintenance packages

To ensure that your control room stays as available as you need it to be, we offer preventative maintenance packages in various scopes and forms. You will receive customised solutions that will support your market and competitive success.

[More about service from JST](#)

THE GREAT PRACTICAL BOOK OF CONTROL ROOMS



Guidebooks, checklists, practical examples, solutions and technical articles for the installation of control rooms, control stations and control centers

REQUEST FREE OF CHARGE

The great practical book of control rooms is free of charge for JST customers and interested parties.

What would you like to do next?

I would like

- request the free control room practice manual
- a callback for a non-binding consultation
- visit the control room simulator in Buxtehude
- experience a digital 360° tour in a control room
- learn more about control rooms at the ko:mon congress

We will gladly answer your questions about our solutions for your CI control room

+49 4161 54044-0

You are currently viewing a placeholder content from **YouTube**. To access the actual content, click the button below. Please note that doing so will share data with third-party providers.

[More Information](#)

[Unblock content](#) [Accept required service and unblock content](#)