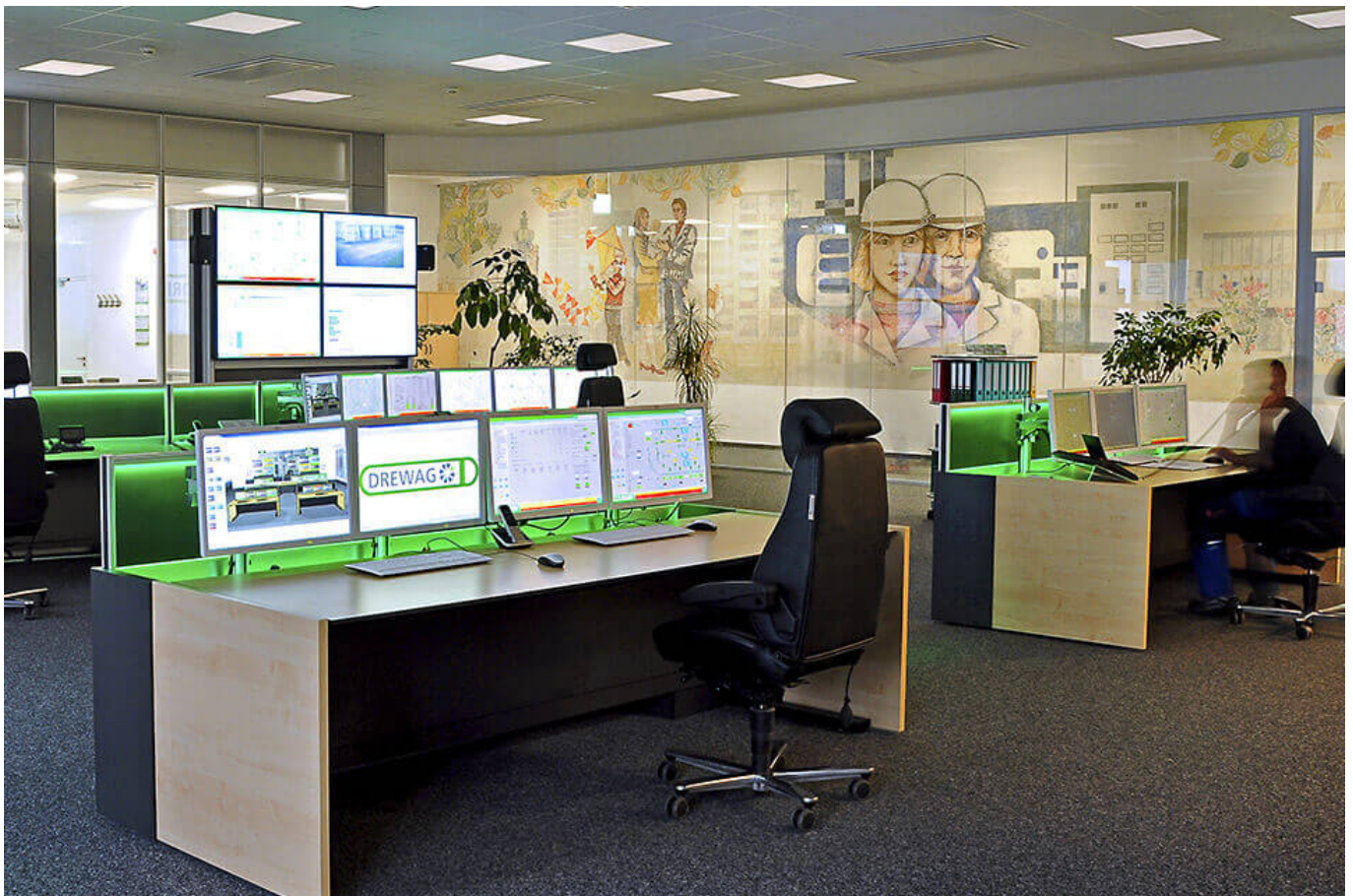
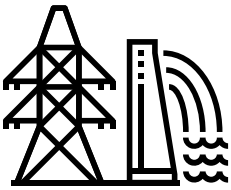


Switch room for energy and water management – professional solutions from JST – Jungmann Systemtechnik®

Innovative technical and ergonomic solutions for your switch room in the energy and water industry can be found at JST! Since 2001 we have been optimising **switch rooms in all production environments**. Our know-how covers the technical architecture, measuring station furnishing, monitor wall visualisation for your switch room and ergonomic and architecturally sound planning as an all-round carefree package. We will provide comprehensive advice and leave nothing to chance. We will bring your switch room up to speed!

REQUEST A NON-BINDING OFFER



- Switch room planning with architecture, technology, light, acoustics, climate planning

- Proactive monitor walls for 24/7 operation
- Reduction of keyboards and mice

- No changes to the hardware/software of your systems necessary!
- Highly stable switch room consoles "Made in Germany"
- Improved overview and efficient operation for your switch room team



Practical examples

Particularly high legal requirements apply to switch and power supply control rooms, which must be reflected unconditionally in the technical architecture of the control room. The solutions from JST combine the required safety standards with maximum ease of use. Have a look at our project reports and you are sure to find a project that comes very close to the requirements for your new measuring station.

We will be happy to put you in touch with the appropriate contact person.

New central control room for InfraLeuna

“You can concentrate on your core business, we will design and develop the framework conditions for your production.” With this company philosophy, InfraLeuna GmbH – the operator of the infrastructure facilities at the Leuna chemical site – strives to provide its customers at the Leuna

chemical site with all necessary services at reasonable prices and in high quality. This also includes the execution of extensive modernisation work. Among which includes the installation of a new central control room.

GO TO PROJECT



A gesture that says it all: With thumbs up, the Project Managers in charge are sending a clear message about the new central control room.

Jochen Rösner / Mark Muschick / Eberhard Schoof (from left to right)

The Project Managers in charge



Spot on with future-proof control room

Structural changes in the company, the optimisation of workstations and a complete modernisation of the control technology – three important requirements that were implemented at the Reick site of DREWAG – Stadtwerke Dresden GmbH. After a thorough survey of the market, the DREWAG management decided in favour of the control room specialists from Jungmann Systemtechnik as their partners for this mammoth task. The result: “A control room that can truly be described as spot on,” says Tino Kuhnke (Group Manager for Generation, Control Rooms).

GO TO PROJECT



DREWAG 

In Dresden, they are impressed by the new installation from JST: "We now possess a flexible and future-proof technology."

Hartmut Hinz / Jens Meller / Andreas Rammer / Christian Helmholz (from left to right)

DREWAG GmbH



With MultiConsoling® the future starts in the network control center

A lack of ergonomics, an unclear number of workstations, equipped with a confusingly large number of monitors, plus unsatisfactory room acoustics and air conditioning – the picture presented to visitors to the former control room of ovag Netz GmbH in Bad Nauheim, Hesse, has little in common with its current status. Thanks to the cooperation with the control room experts from Jungmann Systemtechnik, the network control center was completely “turned upside down”. The result: a 24/7 control center with an attached crisis room, which is convincing both technically and visually.

GO TO PROJECT



"During my research on the German market, I have not been able to find anything that even comes close to this functionality and ease of use."

Christian Weber

Head of Network Management ovag Netz GmbH



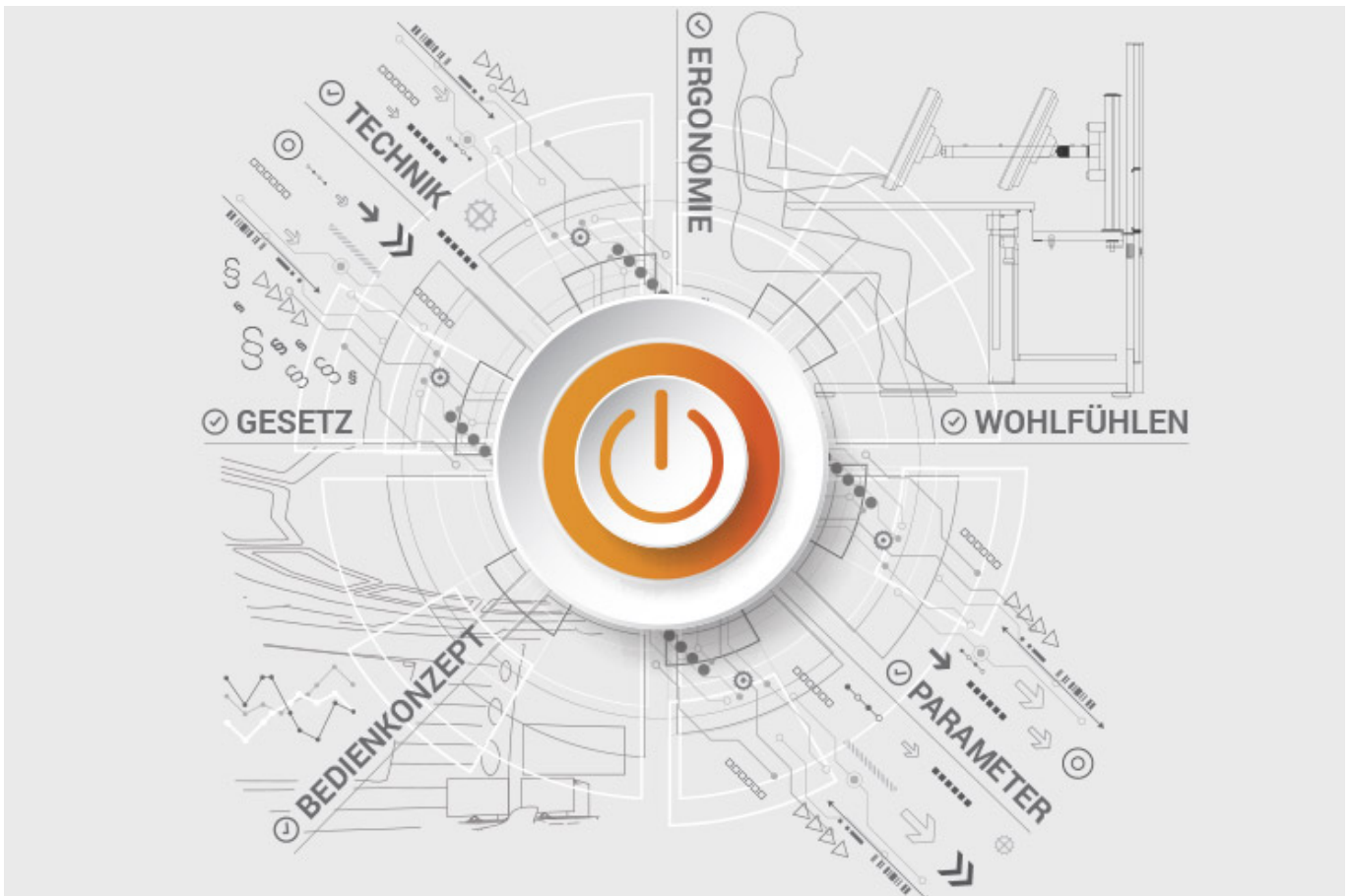
ALL PROJECTS

Documents for download

- [Project report on the new central measuring station of Infralleuna \(PDF\)](#)
- [Comfortable and intuitive system operation at DREWAG \(PDF\)](#)

JST product overview: Think of everything!

Components for your measuring station



Analysis and planning of your control room

Are you planning changes in your control room? Or would you like to breathe some fresh air into your control room? Then make use of the proven planning packages or the free online analysis from JST. Our experts will support you in accordance with BAUA: Study and all important standards and guidelines.

More about the free analysis



Large-display technology – react faster!

Proactively present important information to the right people – before an incident can have a major impact. With scalable large display walls based on LCD displays and Cube technology, we are sure to find the right large-format system for your 24/7 operation!

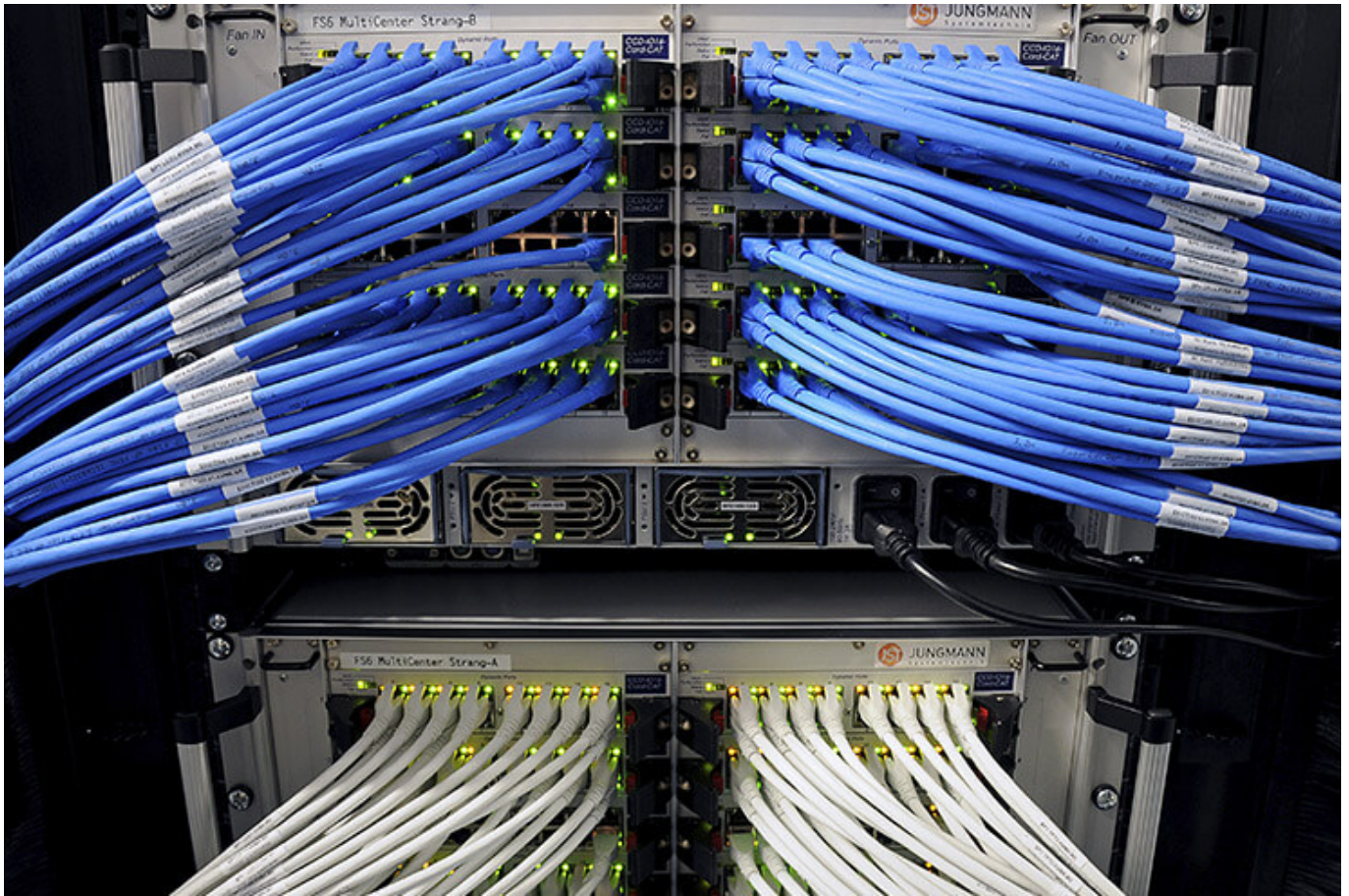
More about JST large-display technology



myGUI® – User interface for large-format system, workplace & infrastructure

The intuitive myGUI® user interface in the 3D layout of your control room offers maximum operating convenience for your MultiConsoling® system. With just one click you can operate workstations, monitor walls and infrastructure – always absolutely safe and excellent in stressful situations.

[More about myGUI®](#)



MultiConsoling® – the command center of the control room

MultiConsoling® is the high-availability control center for connecting all of the signals from your systems to the monitors at the operator's workstation and on the monitor walls. Transmission takes place in real time and does not require any software on your computers.

[More about MultiConsoling®](#)



Control room furniture: ergonomic operator consoles, Recaro operator's chair, AllMedia Conference System

You can get furniture and technology from a single source at JST. The highly stable Stratos operator consoles, with height adjustment and suitable surrounding furniture, form an ergonomic base for your control room.

[More about control room furniture](#)



Large-screen control with graphic controller

With the IP-based graphic controller you can get your monitor wall going. The graphic controller records all video signals over the IP network simultaneously and spreads them out at any position and in any scale on the large display wall.

[More about graphic controllers](#)



PixelDetection® – the operator's eye

Shorten your reaction times! With PixelDetection®, you will receive the right alarm at exactly the right moment and always be able to see an overview. Proven for many years and repeatedly awarded, PixelDetection® is also known as the “artificial eye of the operator”.

[More about PixelDetection®](#)



JST myLogin[®] – the operator's login

JST myLogin[®] is a revolutionary solution for logging on and off centrally and quickly from all operator workstations with your company ID. The login/logout process only takes a few moments. If you want, you can also save your personal layout of the screen contents.

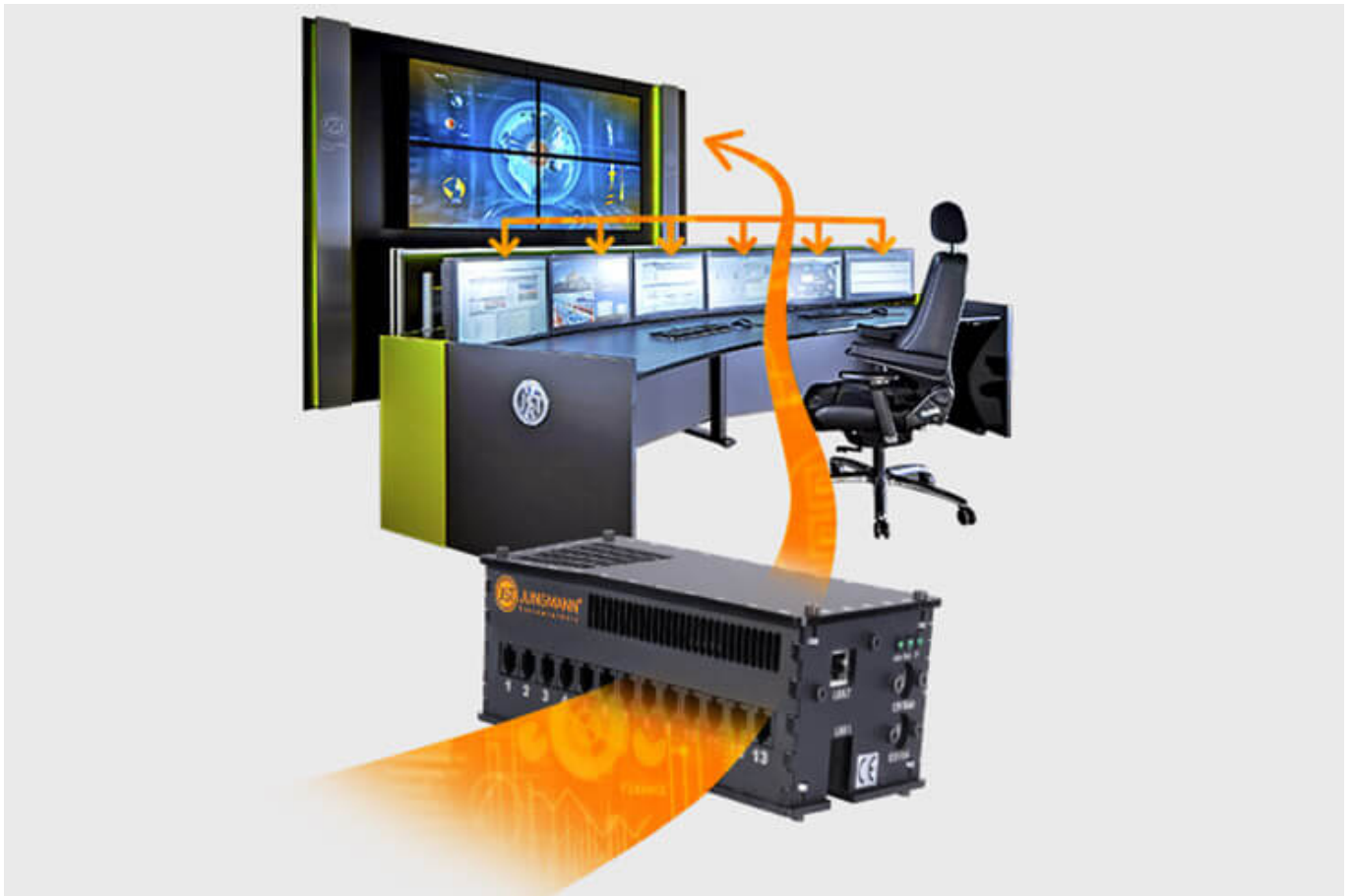
[More about myLogin[®]](#)



CockpitView – the operator’s dashboard

Create dashboards with content from different computers on different networks! CockpitView offers you the perfect overview of your most important applications at a glance. With CockpitView you can stay in control and reduce monitors at the workplace or even the large-format system.

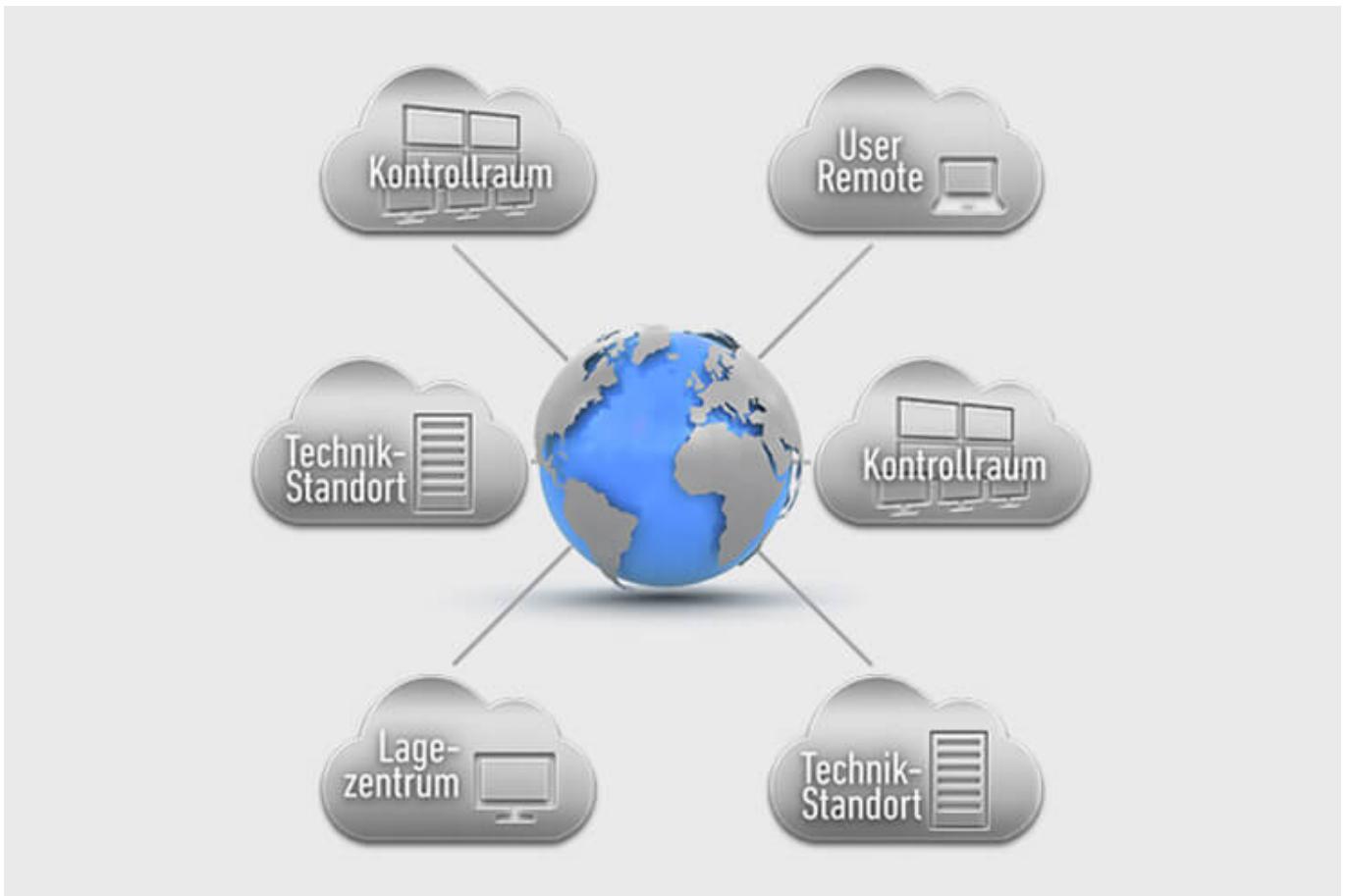
[More about CockpitView](#)



Automation for Videowalls and operator workstations

With the JST CommandBox, you can monitor circuits, relays, audio signals, and much more, and have them automatically switched on at defined workstations or on the monitor wall when critical values are detected. The range of applications is almost unlimited!

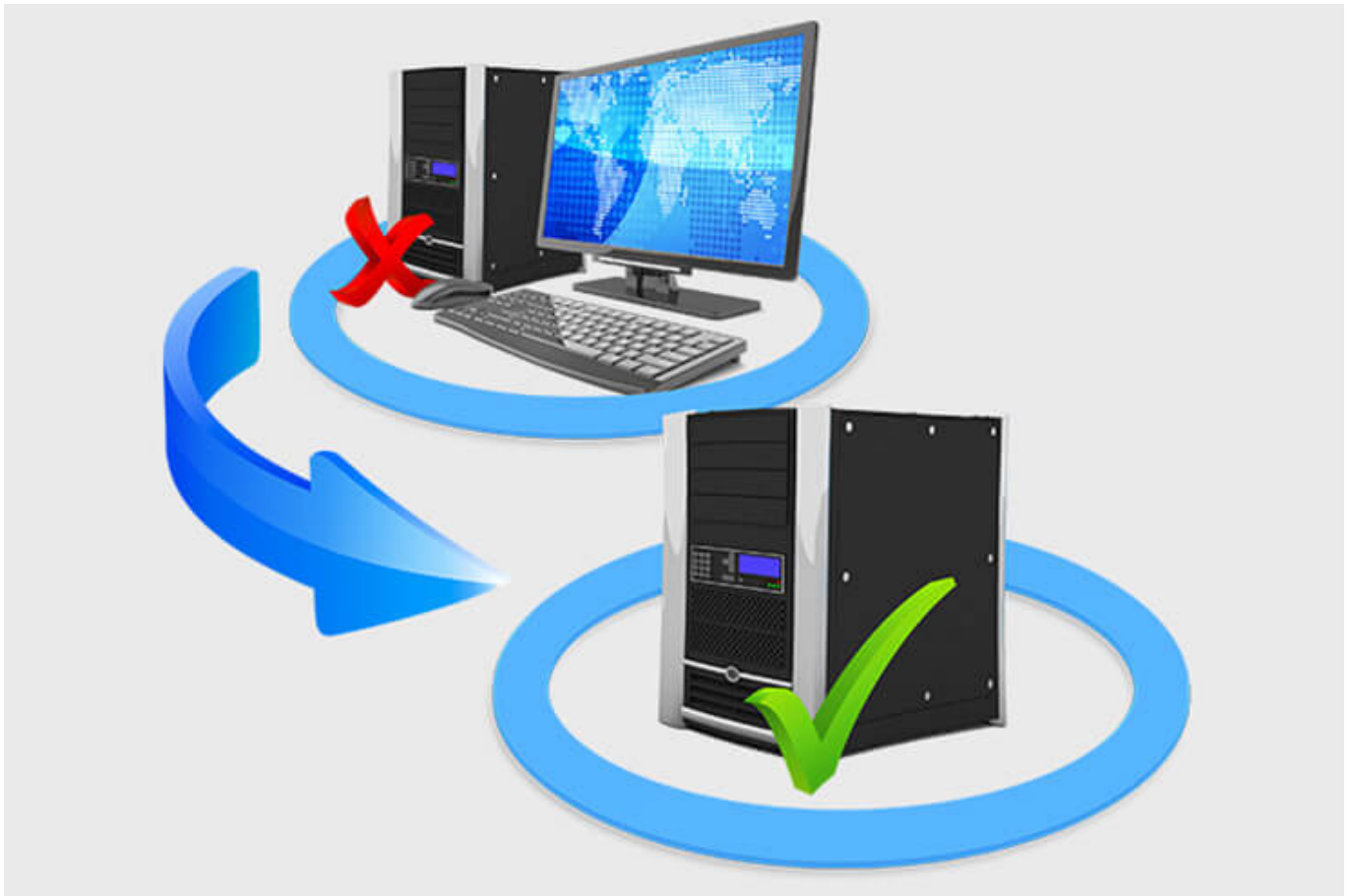
[More about ControlRoom Automation](#)



ControlRoom Remote: Connection of distributed systems and locations

The optional remote interface of JST Systems allows you to visualise and operate remote computers and entire control rooms. Even complex emergency scenarios for backup control rooms are feasible!

[More about ControlRoom Remote](#)



Computer relocation and PC remote control

By relocating computers from the control room to the technical room, you can reduce the thermal load and create more legroom for your employees. Additional advantages are the central administration of the computers as well as the physical access protection in the secured technical room.

[More about computer relocation](#)



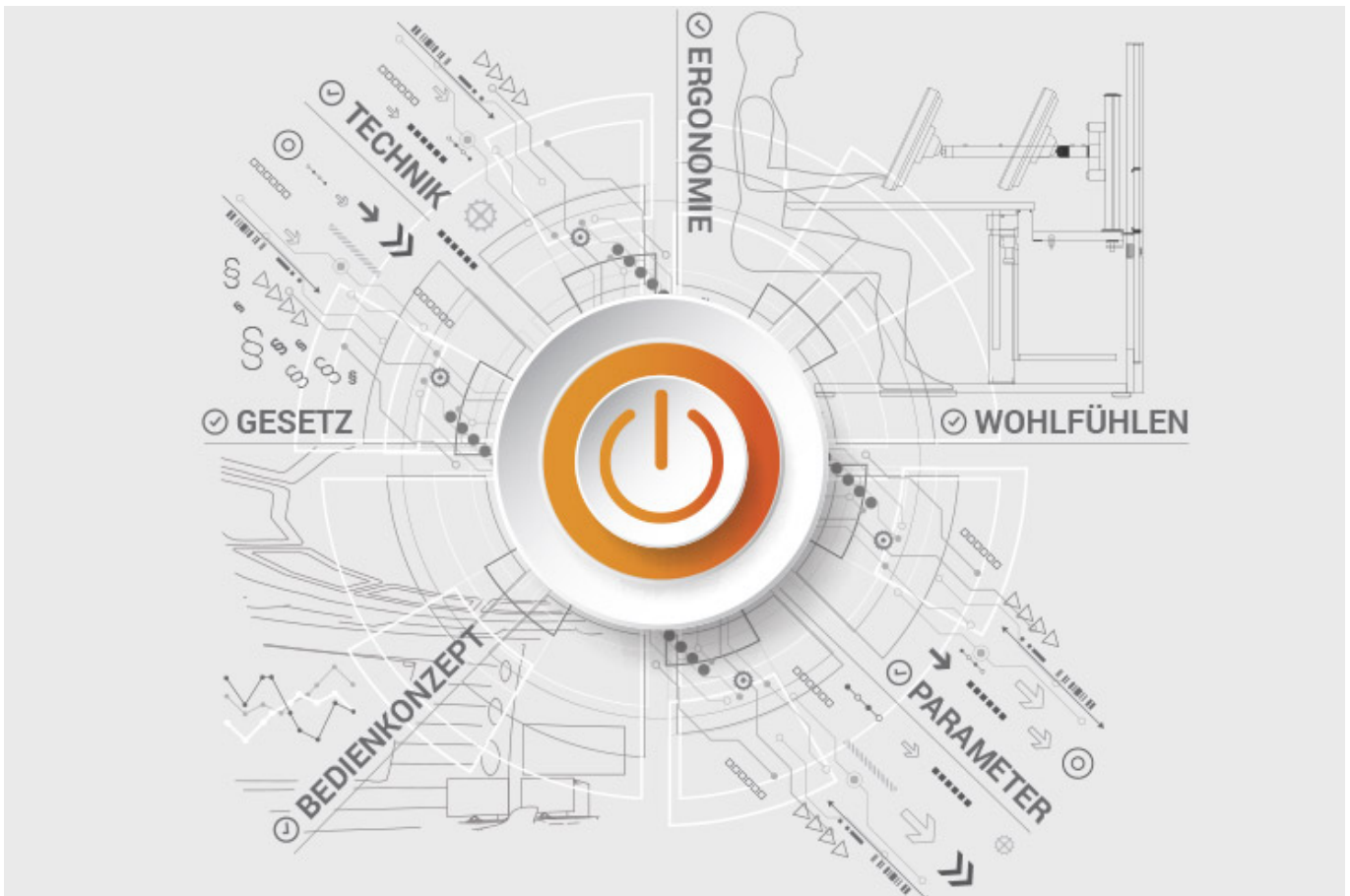
Optional service and maintenance packages

To ensure that your control room stays as available as you need it to be, we offer preventative maintenance packages in various scopes and forms. You will receive customised solutions that will support your market and competitive success.

[More about service from JST](#)

JST product overview: Think of everything!

Components for your measuring station



Analysis and planning of your control room

Are you planning changes in your control room? Or would you like to breathe some fresh air into your control room? Then make use of the proven [planning packages](#) or the free [online analysis](#) from JST. Our experts will support you in accordance with [BAUA: Study](#) and all important standards and guidelines.

[More about the free analysis](#)



Large-display technology – react faster!

Proactively present important information to the right people – before an incident can have a major impact. With scalable large display walls based on LCD displays and Cube technology, we are sure to find the right large-format system for your 24/7 operation!

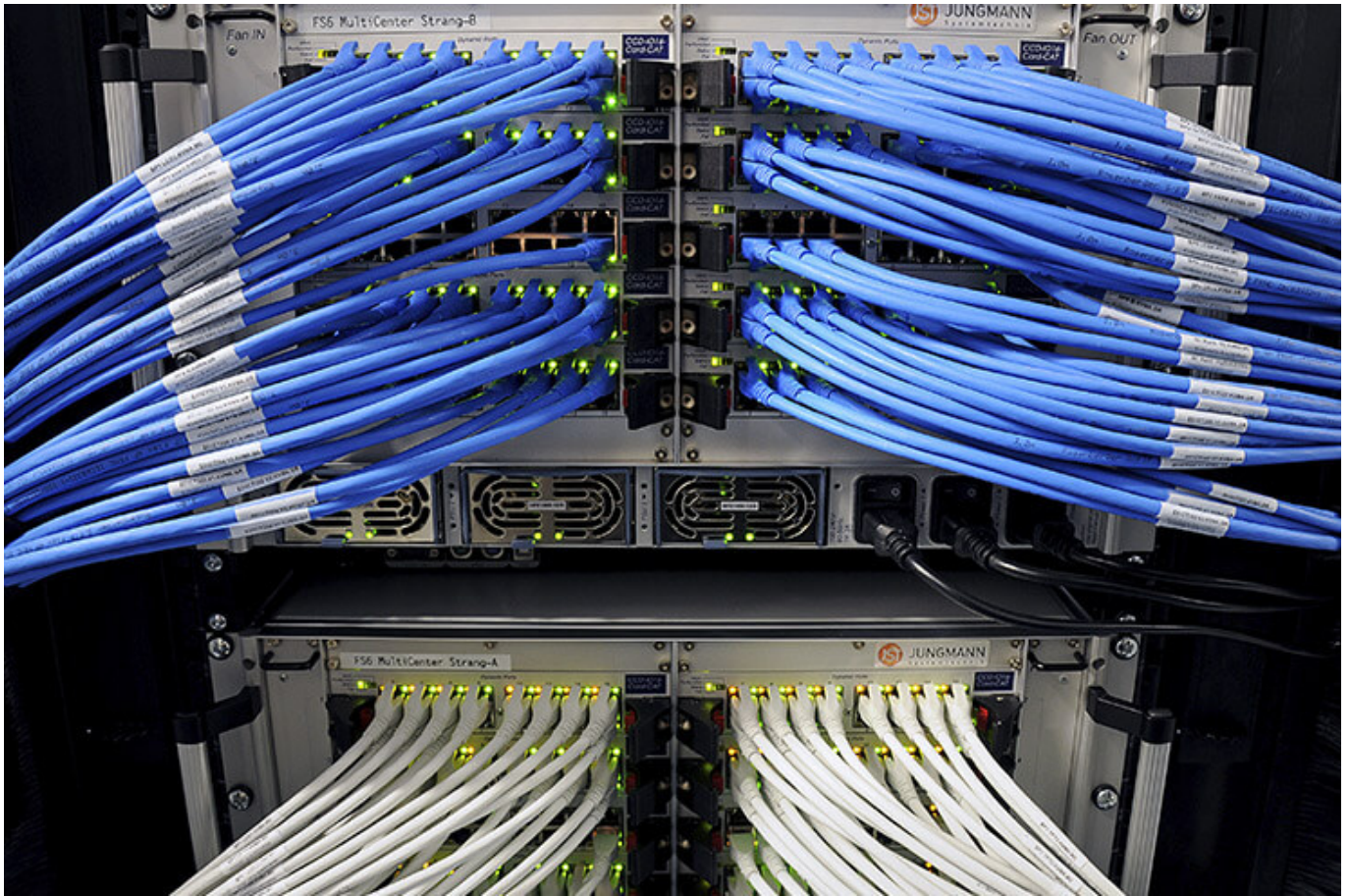
More about JST large-display technology



myGUI® – User interface for large-format system, workplace & infrastructure

The intuitive myGUI® user interface in the 3D layout of your control room offers maximum operating convenience for your MultiConsoling® system. With just one click you can operate workstations, monitor walls and infrastructure – always absolutely safe and excellent in stressful situations.

[More about myGUI®](#)



MultiConsoling[®] – the command center of the control room

MultiConsoling[®] is the high-availability control center for connecting all of the signals from your systems to the monitors at the operator's workstation and on the monitor walls. Transmission takes place in real time and does not require any software on your computers.

[More about MultiConsoling[®]](#)



Control room furniture: ergonomic operator consoles, Recaro operator's chair, AllMedia Conference System

You can get furniture and technology from a single source at JST. The highly stable Stratos operator consoles, with height adjustment and suitable surrounding furniture, form an ergonomic base for your control room.

[More about control room furniture](#)



Large-screen control with graphic controller

With the IP-based graphic controller you can get your monitor wall going. The graphic controller records all video signals over the IP network simultaneously and spreads them out at any position and in any scale on the large display wall.

[More about graphic controllers](#)



PixelDetection® – the operator's eye

Shorten your reaction times! With PixelDetection®, you will receive the right alarm at exactly the right moment and always be able to see an overview. Proven for many years and repeatedly awarded, PixelDetection® is also known as the “artificial eye of the operator”.

[More about PixelDetection®](#)



JST myLogin[®] – the operator's login

JST myLogin[®] is a revolutionary solution for logging on and off centrally and quickly from all operator workstations with your company ID. The login/logout process only takes a few moments. If you want, you can also save your personal layout of the screen contents.

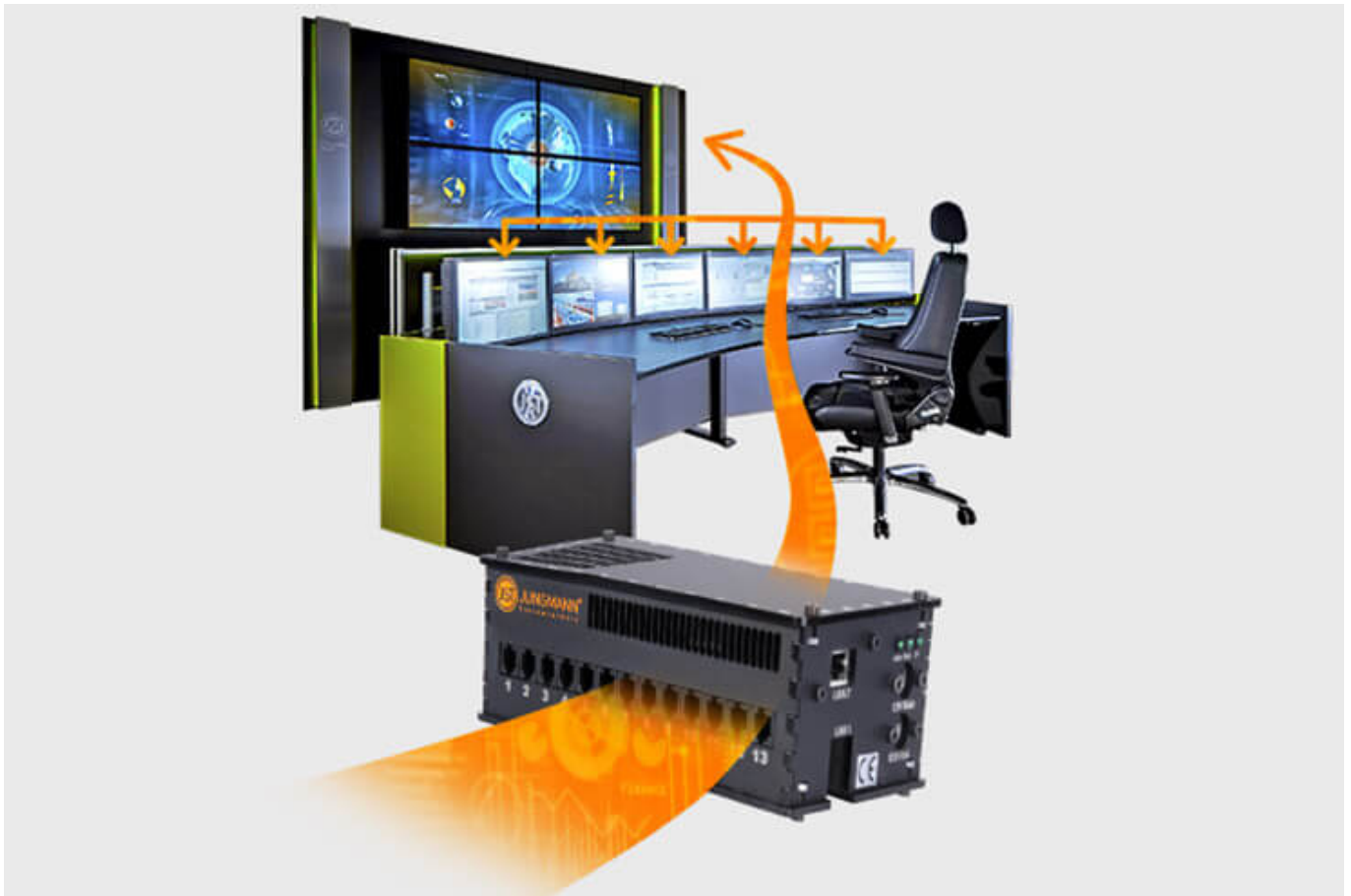
[More about myLogin[®]](#)



CockpitView – the operator’s dashboard

Create dashboards with content from different computers on different networks! CockpitView offers you the perfect overview of your most important applications at a glance. With CockpitView you can stay in control and reduce monitors at the workplace or even the large-format system.

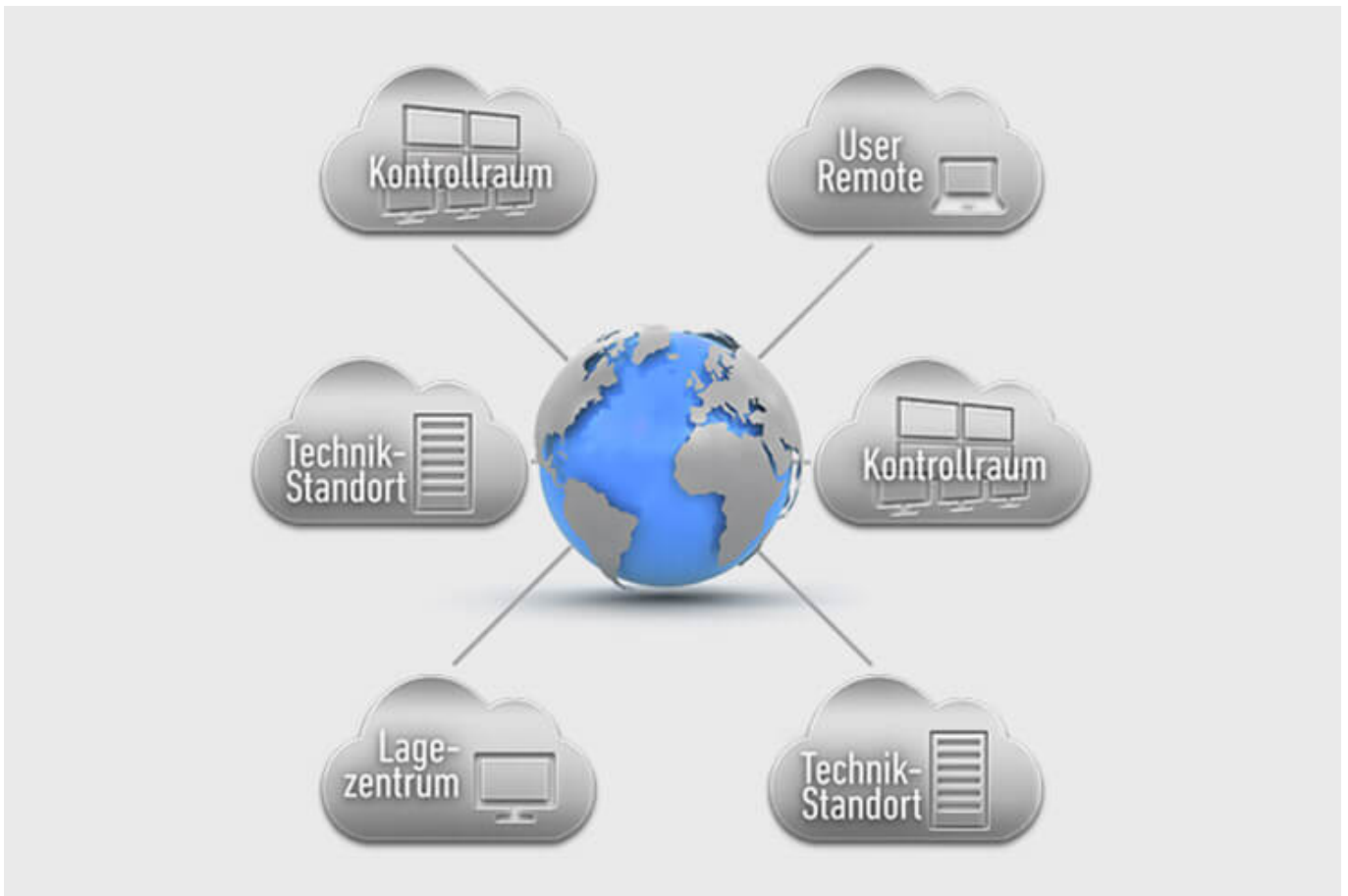
[More about CockpitView](#)



Automation for Videowalls and operator workstations

With the JST CommandBox, you can monitor circuits, relays, audio signals, and much more, and have them automatically switched on at defined workstations or on the monitor wall when critical values are detected. The range of applications is almost unlimited!

[More about ControlRoom Automation](#)



ControlRoom Remote: Connection of distributed systems and locations

The optional remote interface of JST Systems allows you to visualise and operate remote computers and entire control rooms. Even complex emergency scenarios for backup control rooms are feasible!

[More about ControlRoom Remote](#)



Computer relocation and PC remote control

By relocating computers from the control room to the technical room, you can reduce the thermal load and create more legroom for your employees. Additional advantages are the central administration of the computers as well as the physical access protection in the secured technical room.

[More about computer relocation](#)

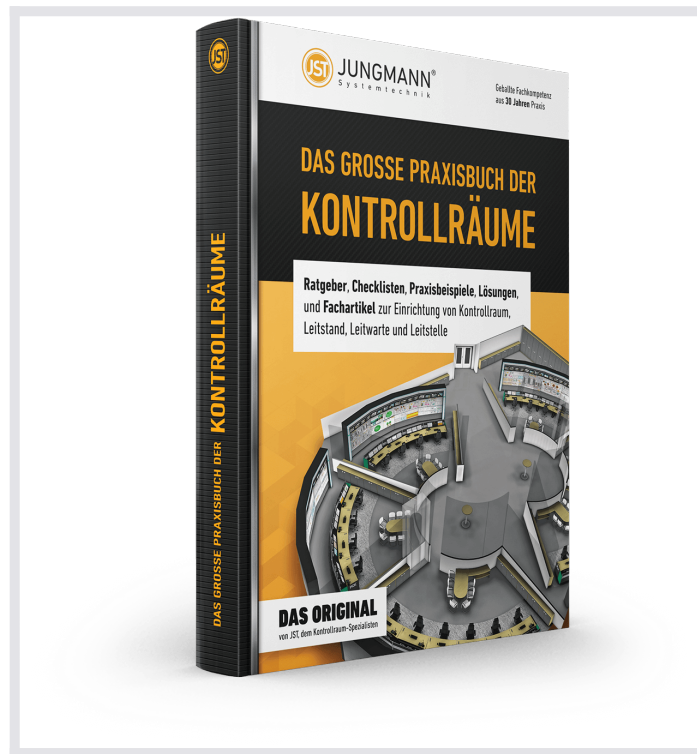


Optional service and maintenance packages

To ensure that your control room stays as available as you need it to be, we offer preventative maintenance packages in various scopes and forms. You will receive customised solutions that will support your market and competitive success.

[More about service from JST](#)

THE GREAT PRACTICAL BOOK OF CONTROL ROOMS



Guidebooks, checklists, practical examples, solutions and technical articles for the installation of control rooms, control stations and control centers

REQUEST FREE OF CHARGE

The great practical book of control rooms is free of charge for JST customers and interested parties.

What would you like to do next?

I would like

- request the free control room practice manual
- a callback for a non-binding consultation
- visit the control room simulator in Buxtehude
- experience a digital 360° tour in a control room
- learn more about control rooms at the ko:mon congress

We will gladly answer your questions about our solutions for your measuring station

+49 4161 54044-0

You are currently viewing a placeholder content from **YouTube**. To access the actual content, click the button below. Please note that doing so will share data with third-party providers.

[More Information](#)

[Unblock content](#) [Accept required service and unblock content](#)