



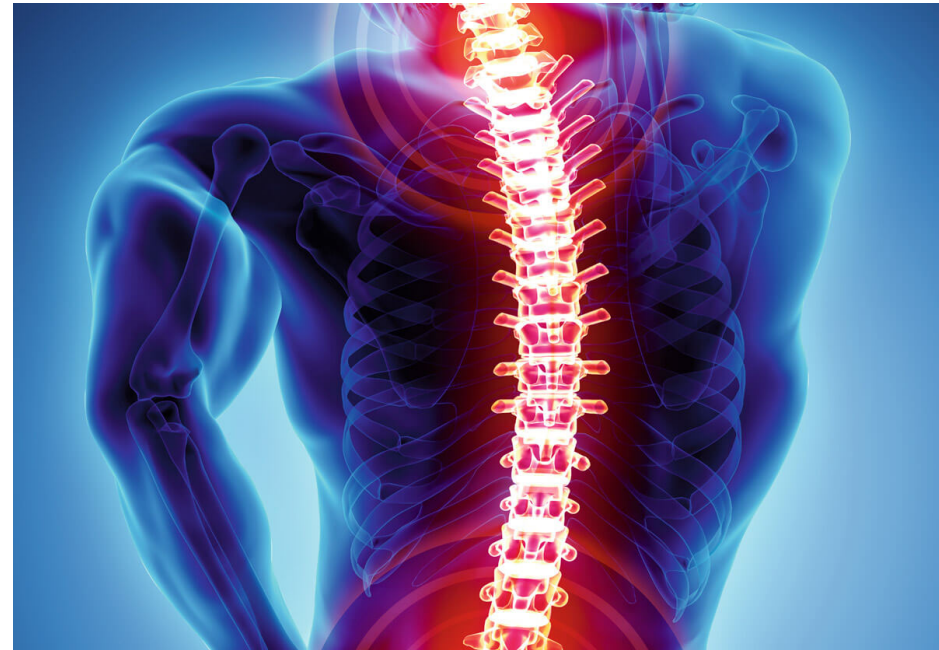
## **Operator chairs for 24/7 use in the control room**

RECARO 24 and CONTROLLER 24 V2 – operator chairs that adapt to you. Ideal for 24-hour operation in control rooms and control stations.

## 02 Operator chairs for 24/7 use in the control room | Stand: 18.04.2021

### The ultimate operator chairs for 24/7 use in the control room

**RECARO 24 "K" and "L", as well as CONTROLLER 24 V2** – the operator chairs that adapt to you. Ideal for 24-hour operation in control rooms and control stations. Because people who spend several hours at a time sitting down, and still need to stay physically and psychologically fit, make very tough demands on their chairs.



## JST offers you three high-quality operator chairs:



### RECARO 24 "K"

Superior seating comfort provided by taut upholstery and materials with maximum load-bearing capacity make this control room chair the ideal companion for people who are required to monitor events in the control room with the utmost concentration.



### RECARO 24 "L" - with seat surface extension

A control center chair that leaves nothing to be desired. Non-fatiguing, relaxed working with individually adjustable settings for each user.



### CONTROLLER 24 "V2"

The chair is very sturdy, durable, ergonomic and comfortable. People with significantly wider backs find it very comfortable.

**All three chairs are usable in cantilever mode** and the mechanism can be adjusted to the weight of the respective operator.

# 04

Operator chairs for 24/7 use in the control room | Stand: 18.04.2021



Headrest adjustable in height and inclination for relaxed working.  
Optional: exchangeable, washable headrest covers for shift work (hygiene).



Armrests fold away upwards, adjustable in inclination and tested for highest load.

Individually adjustable support for the lumbar spine thanks to heavy-duty materials for both the frame structure and the cover fabrics (highest requirements, because from automotive engineering).

Optional seat extension for larger thigh support.

Pump (Airmatic®) to inflate the air cushion in the lumbar region.



Backrest tilt adjustable by means of handwheel operated from both sides.

# RECARO 24

the operator's chair

**05** Operator chairs for 24/7 use in the control room | Stand: 18.04.2021



**RECARO 24:**

Detailed views

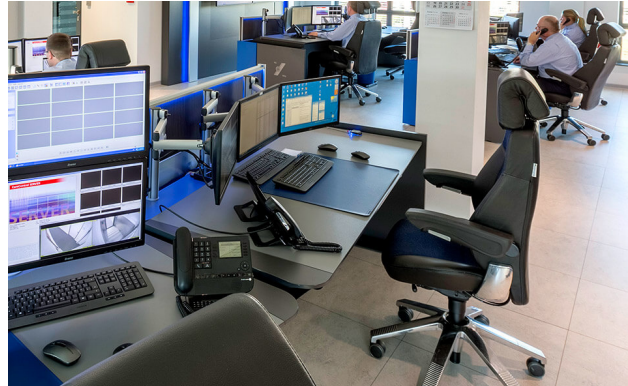
**For RECARO AND CONTROLLER we offer 24 months warranty – also in 24/7-operation**



### **Advantages of RECARO 24:**

- ✔ Specially manufactured for 24/7 operation
- ✔ Seat height adjustment with gas pressure spring
- ✔ High seating comfort due to firm upholstery
- ✔ Synchronous adjustment:  
Individual weight adjustment option (approx. 60 -130 kg, optionally up to 200 kg)
- ✔ Tested according to British Standard expressly for control room chairs in 24-hour use

07 Operator chairs for 24/7 use in the control room | Stand: 18.04.2021



**RECARO 24:  
Experience a 24/7  
control room chair with  
the ultimate in  
comfortable seating!**

A normal office chair is too straining in the control room. Test the Recaro24 operator's chair and allow yourself to be amazed by its quality.



**On request:** 6-way comfort headrest



The chair can be used permanently movable in free swing mode or can be locked in different positions. The backrest is adjustable in the angle to the seat and in the inclination. The mechanism can be adjusted to the weight of the respective user. The correct adjustment enables correct sitting and working and also increases the chair's durability.

An air pelvic support allows infinitely variable adjustment of the required pelvic support point - for low-fatigue, back-friendly sitting.

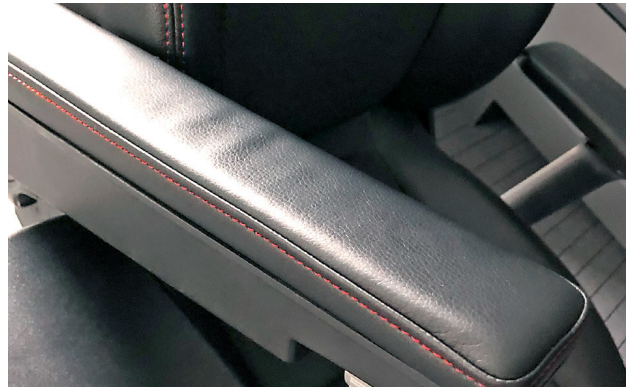
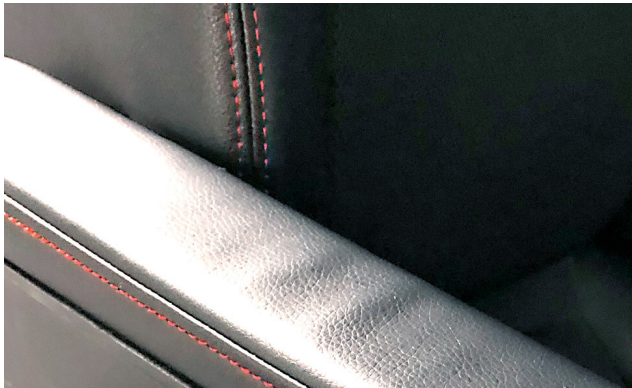
Standard are the upholstered folding armrests with imitation leather cover and burgundy stitching. These can be adjusted in inclination by means of a rotary wheel and can be folded away upwards. Optionally, 4D armrests are also available in combination with the folding armrests. These are adjustable in width, height and horizontally and are equipped with a 360° swivel support.

**CONTROLLER 24**  
THE OPERATOR'S CHAIR  
„VZ“



# 09

Operator chairs for 24/7 use in the control room | Stand: 18.04.2021



## CONTROLLER 24 V2: Views

**Standard cover:** black / imitation leather

Wine red **seams**, with **folding armrests** (folds upwards) covered with imitation leather,

**Free swing mechanism**, **Weight adjustment** (approx. 60 – 130 kg).

Self-supporting, **most stable frame construction**, adjustable comfort headrest, extra strong gas spring for height adjustment.

**Standard version:** Castors (type 7E) for hard floors.

**Alternative:** Castors (type 7P) for soft floors (carpet).

Please indicate in the order!

**An alles denken!**

Jungmann Systemtechnik



**Do you have any questions?**

We are happy to advise you:

**+49 4161 54044-0**

Or write us a [message \(kontakt@jst.ag\)](mailto:kontakt@jst.ag), we will get back to you immediately!

[www.jungmann.de](http://www.jungmann.de)

We reserve the right to make changes to technical data, programming, functions and designs in the interest of technical progress without prior notice