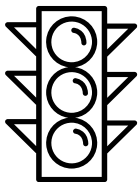


## Traffic management center - continuous monitoring of all traffic routes

Regardless of whether it's the subway network of a large city or the highway of a federal state – if something doesn't go according to plan it can cause **both the timetable and traffic** to become quite confused. In order to prevent a domino effect with unpleasant consequences, traffic must be **handled quickly and carefully** in the traffic management center. And around the clock.

In order to always keep an overview in the traffic management center, JST offers the latest technology, which is exactly adapted to the respective application. With our specially developed professional tools, which are only available from JST, we also provide every operations control center with valuable support in 24/7 operation. You can experience all this in combination live in our control room simulator.

**OFFER SET UP TRAFFIC MANAGEMENT CENTER**



Hamburg Police Headquarters

- **Basics:** Thorough analysis and planning
- **From a single source:** architecture, technology, light, acoustics, climate
- **Quality:** Control room furniture from Germany
  
- **Resilient:** Monitor walls for 24/7 operation
- **Safe:** baua Study, BG, VBG, escape routes
- **Pleasant:** Optimal working atmosphere, suitable design



## Practical examples: Traffic control center

Jungmann Systemtechnik is a **sought-after expert** for the **planning and implementation of traffic control center**. JST takes components such as ergonomics, viewing angle, lighting and hardware as well as software, infrastructure and the adaptation of existing systems and networks into account during planning. The optimisation of human communication is also enormously important in order to successfully carry out the project. Our reference projects will give you a taste of what the perfect end result can look like.

**We will be happy to put you in touch with the appropriate contact person.**

### **New control center for traffic monitoring with monitor wall and flexible control**

Rush hour traffic in the city. The streets are full and commuters gather at the local transport stops. If a bus breaks down now, it will be difficult. In case of breakdowns or delays, everything depends on the control center in the university town of Göttingen. There, ideal technical conditions for traffic monitoring have now been created in favour of reaction time. With products made by

JST, the employees of the Göttinger Verkehrsbetriebe GmbH are able to maintain an overview.

**GO TO PROJECT**



*Praise from traffic master Ricardo Mecke: "I have never worked with someone so professional before. From the first meeting to the installation, everything went perfectly."*

**Thomas Zimmermann / Ricardo Mecke / Dr. Jens Conrad (from left)**

Operations manager / traffic master / administrator



## New traffic management center is the core of the metro system

“We have proven that Berlin construction projects can be completed on time and without increasing costs,” says Antje Michalak, responsible for the “Control Centers 2014+” project of Berliner Verkehrsbetriebe, which includes the new operations control center for the underground railway (BLU). Jungmann Systemtechnik also contributed to this new building project with a total budget of 8.9 million euros. 170 employees control the train traffic around the clock from the core of the metro system in Lichtenberg.

**GO TO PROJECT**



*"We've built a perfect control center here."*

**Lars Kramer (left) / Antje Michalak / Matthias Borgwald (right)**

Sub-Project Manager IT Engineering / General Project Manager / Sub-Network Manager



## The NRW traffic management center has a complete overview of the motorways

“Watch out for traffic!” – with so-called traffic management systems, the traffic management center is able to demonstrably improve traffic safety and traffic flow on the motorway routes in NRW. After merging the planning, construction and operation of these telematics facilities under the umbrella of the North Rhine-Westphalia Road Construction State Enterprise – Straßen.NRW for short – in April 2013, they will be controlled by the operators of the newly built traffic management center in Leverkusen. JST MultiConsoling® enables operators to keep a permanent eye on what is happening on the motorways and, if necessary, to intervene quickly and in a results-oriented manner.



...

**Ingo Menzel (left) / Mario Lukas / Michael Kalisch (right)**

"NRW Traffic Control Center" Project Team



## ALL PROJECTS

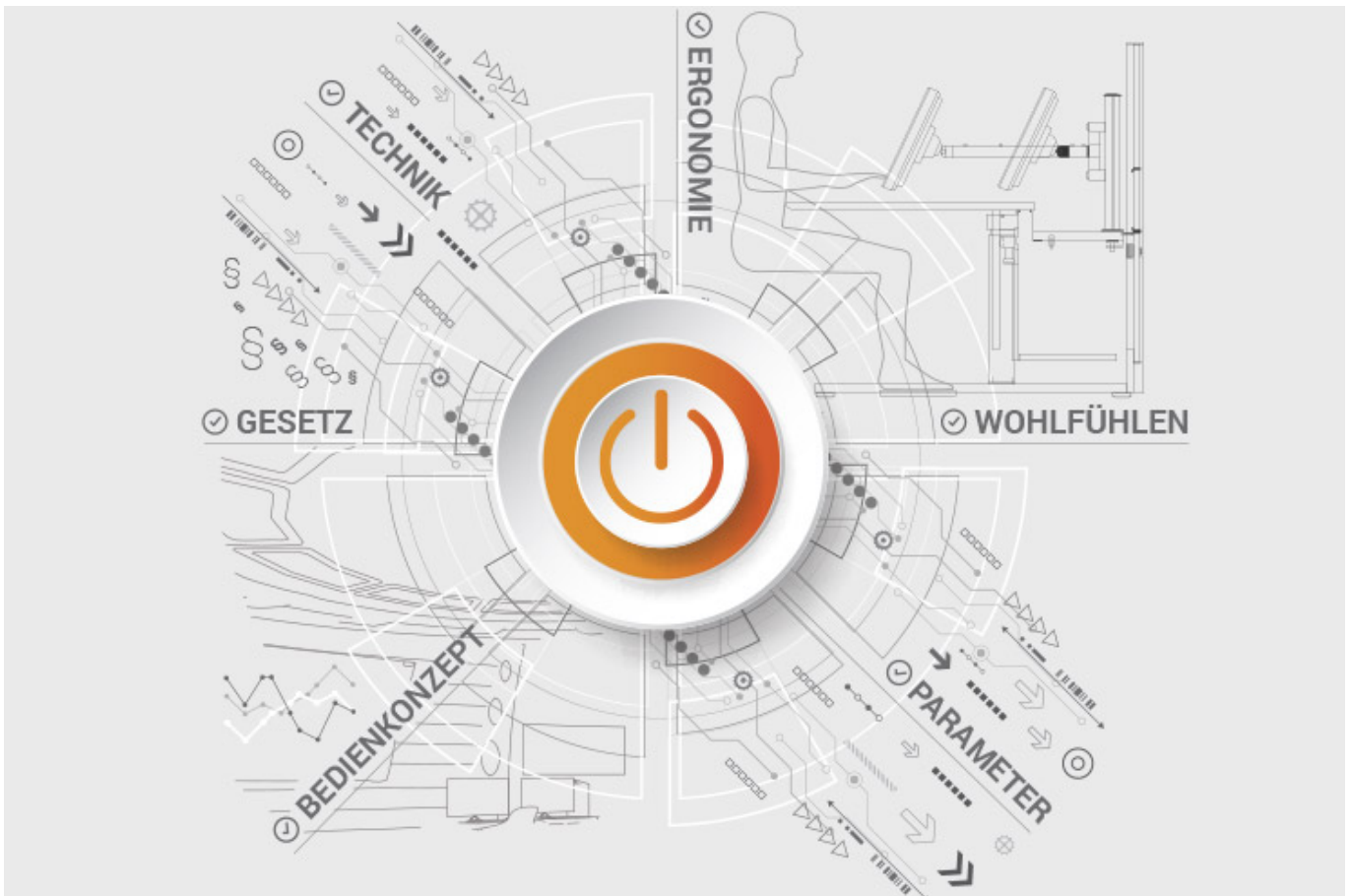
### Documents for download

- [Project report of the new traffic control room of BVG Berlin \(PDF\)](#)
- [Project report on the new central control room of Infraleuna \(PDF\)](#)

**JST product overview: Think of everything!**

**Set up a traffic control center with the appropriate components**





## Analysis and planning of your control room

Are you planning changes in your control room? Or would you like to breathe some fresh air into your control room? Then make use of the proven [planning packages](#) or the free [online analysis](#) from JST. Our experts will support you in accordance with [BAUA: Study](#) and all important standards and guidelines.

[More about the free analysis](#)



## **Large-display technology – react faster!**

Proactively present important information to the right people – before an incident can have a major impact. With scalable large display walls based on LCD displays and Cube technology, we are sure to find the right large-format system for your 24/7 operation!

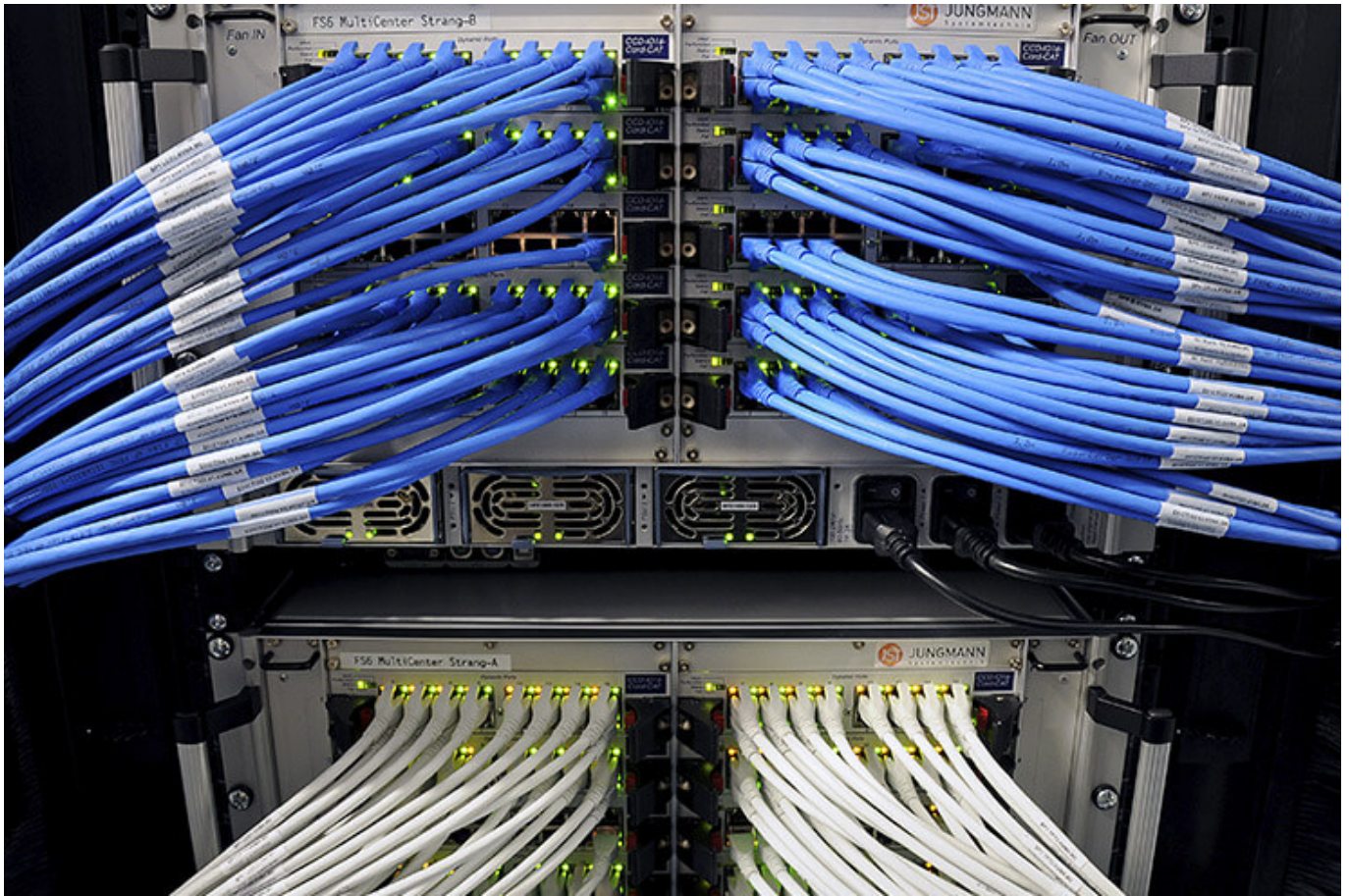
More about JST large-display technology



## **myGUI® – User interface for large-format system, workplace & infrastructure**

The intuitive myGUI® user interface in the 3D layout of your control room offers maximum operating convenience for your MultiConsoling® system. With just one click you can operate workstations, monitor walls and infrastructure – always absolutely safe and excellent in stressful situations.

[More about myGUI®](#)



## **MultiConsoling® – the command center of the control room**

MultiConsoling® is the high-availability control center for connecting all of the signals from your systems to the monitors at the operator's workstation and on the monitor walls. Transmission takes place in real time and does not require any software on your computers.

[More about MultiConsoling®](#)



**Control room furniture: ergonomic operator consoles, Recaro operator's chair, AllMedia Conference System**

You can get furniture and technology from a single source at JST. The highly stable Stratos operator consoles, with height adjustment and suitable surrounding furniture, form an ergonomic base for your control room.

[More about control room furniture](#)



## Large-screen control system with graphic controller

With the IP-based graphic controller you can get your monitor wall going. The graphic controller records all video signals over the IP network simultaneously and spreads them out at any position and in any scale on the large display wall.

[More about graphic controllers](#)



## PixelDetection® – the operator's eye

Shorten your reaction times! With PixelDetection®, you will receive the right alarm at exactly the right moment and always be able to see an overview. Proven for many years and repeatedly awarded, PixelDetection® is also known as the “artificial eye of the operator”.

[More about PixelDetection®](#)



## **JST myLogin<sup>®</sup> – the operator's login**

JST myLogin<sup>®</sup> is a revolutionary solution for logging on and off centrally and quickly from all operator workstations with your company ID. The login/logout process only takes a few moments. If you want, you can also save your personal layout of the screen contents.

[More about myLogin<sup>®</sup>](#)

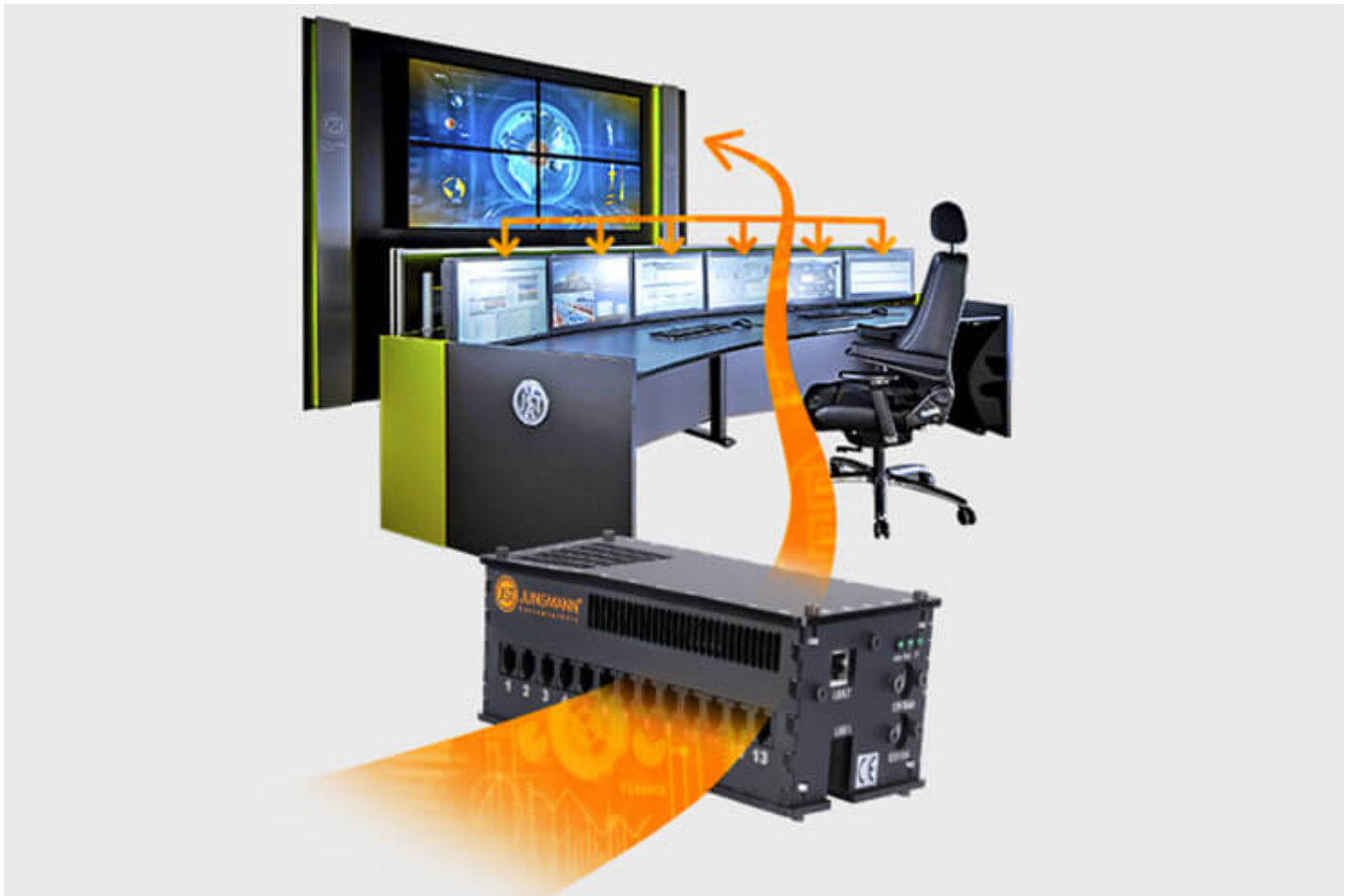




## CockpitView – the operator’s dashboard

Create dashboards with content from different computers on different networks! CockpitView offers you the perfect overview of your most important applications at a glance. With CockpitView you can stay in control and reduce monitors at the workplace or even the large-format system.

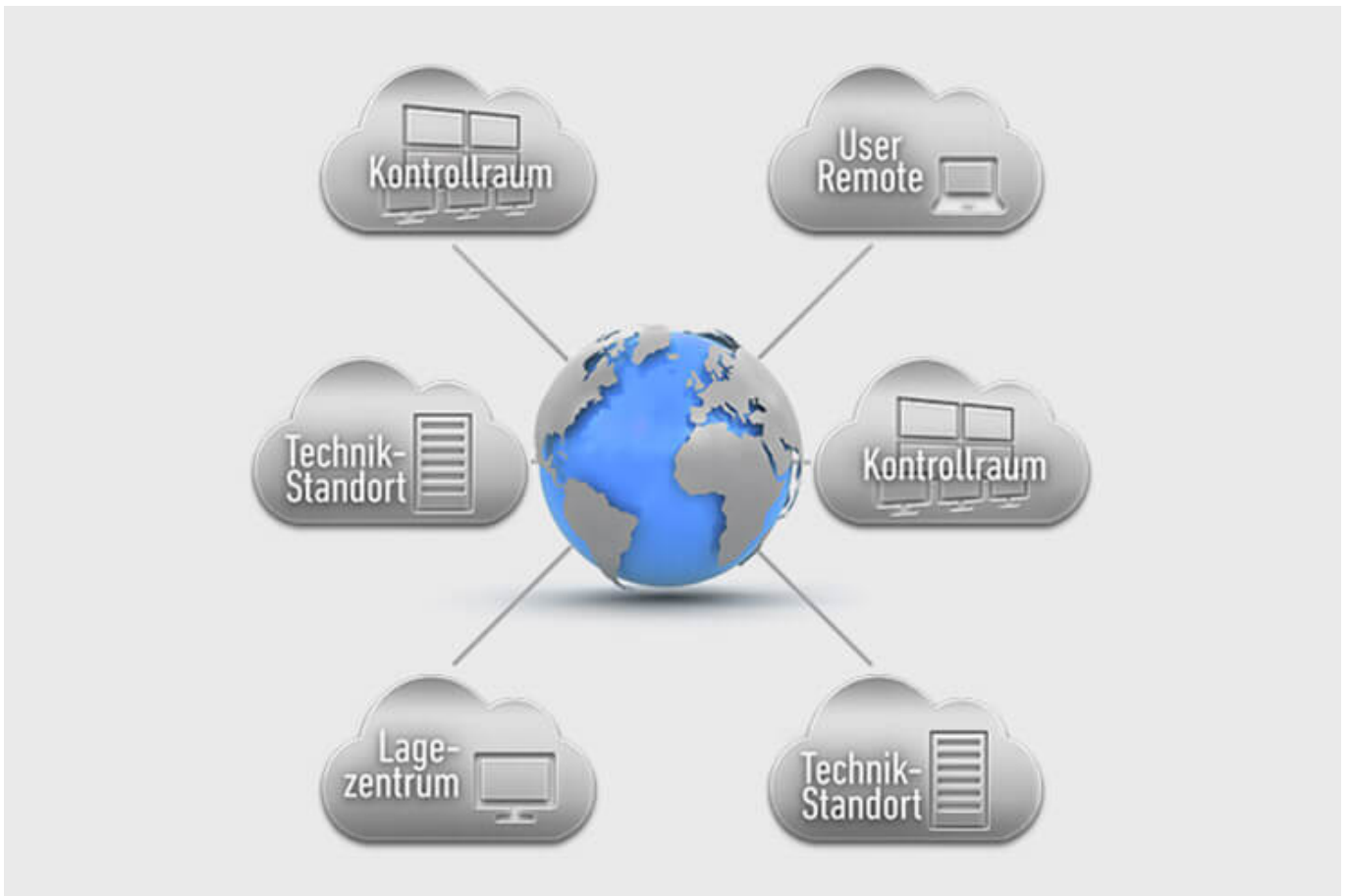
[More about CockpitView](#)



## Automation for Videowalls and operator workstations

With the JST CommandBox, you can monitor circuits, relays, audio signals, and much more, and have them automatically switched on at defined workstations or on the monitor wall when critical values are detected. The range of applications is almost unlimited!

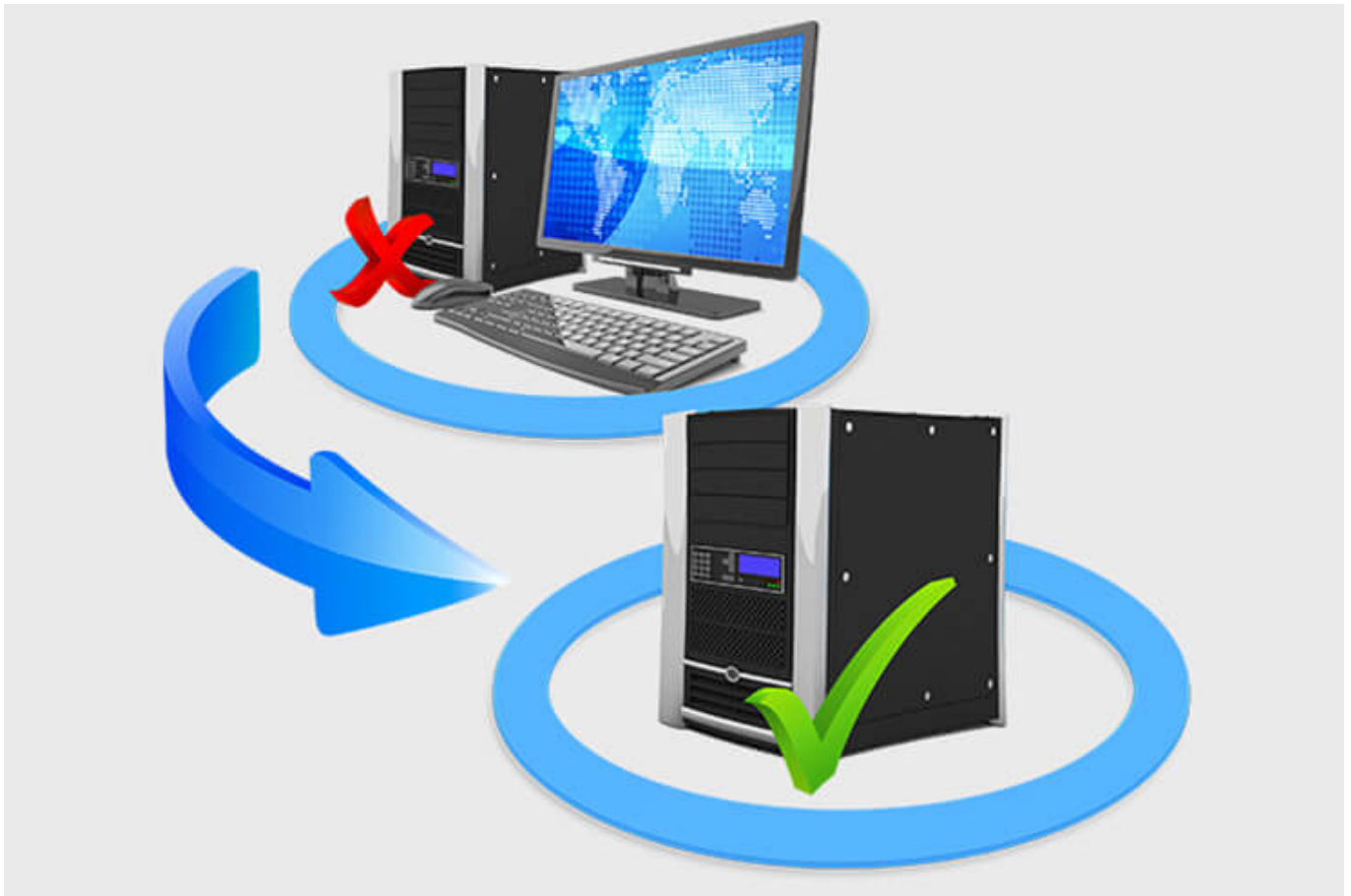
[More about ControlRoom Automation](#)



## **ControlRoom Remote: Connection of distributed systems and locations**

The optional remote interface of JST Systems allows you to visualise and operate remote computers and entire control rooms. Even complex emergency scenarios for backup control rooms are feasible!

[More about ControlRoom Remote](#)



## **Computer relocation and PC remote control**

By relocating computers from the control room to the technical room, you can reduce the thermal load and create more legroom for your employees. Additional advantages are the central administration of the computers as well as the physical access protection in the secured technical room.

[More about computer relocation](#)



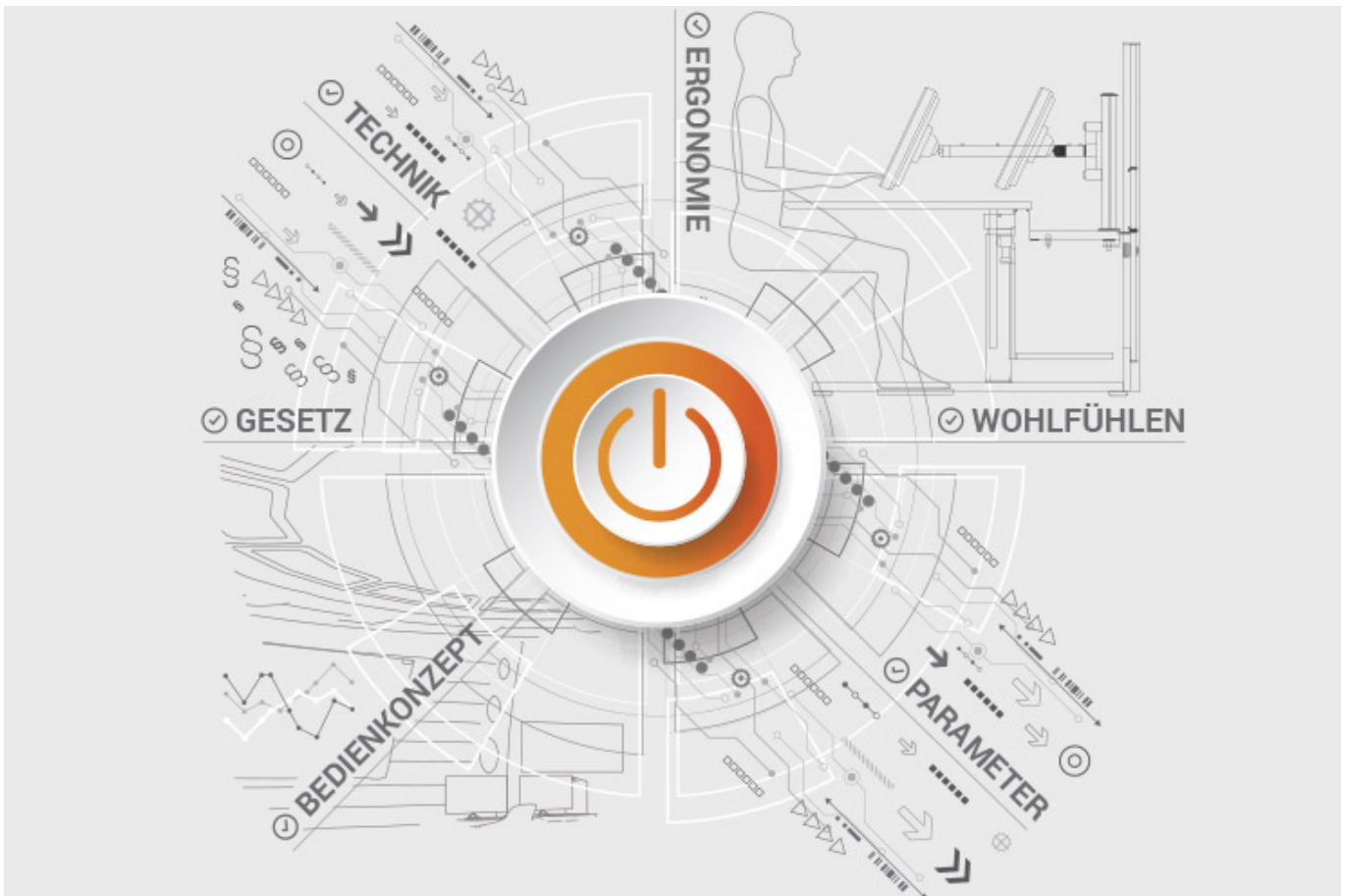
### Optional service and maintenance packages

To ensure that your control room stays as available as you need it to be, we offer preventative maintenance packages in various scopes and forms. You will receive customised solutions that will support your market and competitive success.

[More about service from JST](#)

## **JST product overview: Think of everything!**

### **Set up a traffic control center with the appropriate components**



## Analysis and planning of your control room

Are you planning changes in your control room? Or would you like to breathe some fresh air into your control room? Then make use of the proven planning packages or the free online analysis from JST. Our experts will support you in accordance with BAUA: Study and all important standards and guidelines.

More about the free analysis



## **Large-display technology – react faster!**

Proactively present important information to the right people – before an incident can have a major impact. With scalable large display walls based on LCD displays and Cube technology, we are sure to find the right large-format system for your 24/7 operation!

More about JST large-display technology

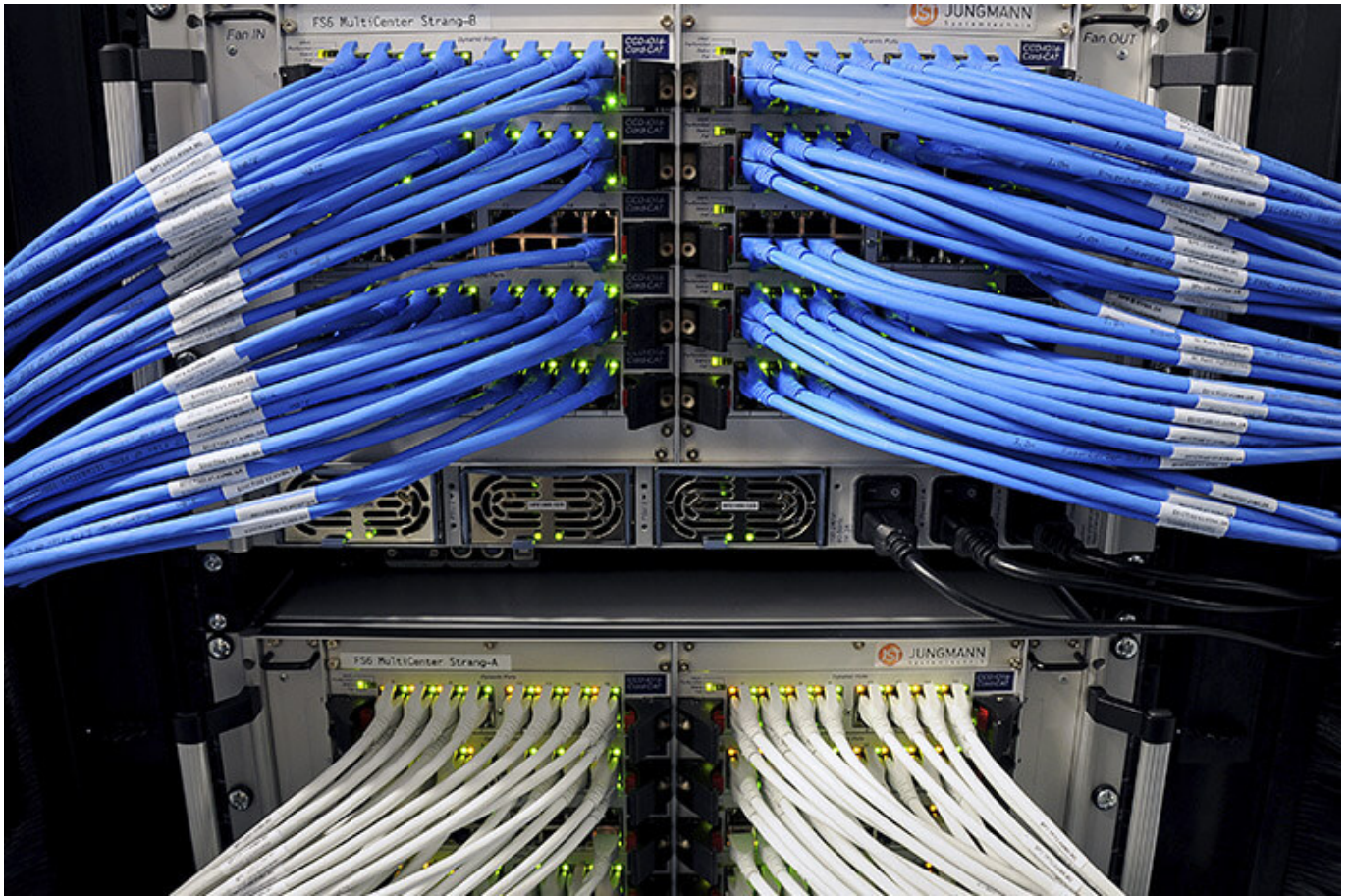


## **myGUI® – User interface for large-format system, workplace & infrastructure**

The intuitive myGUI® user interface in the 3D layout of your control room offers maximum operating convenience for your MultiConsoling® system. With just one click you can operate workstations, monitor walls and infrastructure – always absolutely safe and excellent in stressful situations.

[More about myGUI®](#)





## **MultiConsoling® – the command center of the control room**

MultiConsoling® is the high-availability control center for connecting all of the signals from your systems to the monitors at the operator's workstation and on the monitor walls. Transmission takes place in real time and does not require any software on your computers.

[More about MultiConsoling®](#)



**Control room furniture: ergonomic operator consoles, Recaro operator's chair, AllMedia Conference System**

You can get furniture and technology from a single source at JST. The highly stable Stratos operator consoles, with height adjustment and suitable surrounding furniture, form an ergonomic base for your control room.

[More about control room furniture](#)



## Large-screen control system with graphic controller

With the IP-based graphic controller you can get your monitor wall going. The graphic controller records all video signals over the IP network simultaneously and spreads them out at any position and in any scale on the large display wall.

[More about graphic controllers](#)



## PixelDetection® – the operator's eye

Shorten your reaction times! With PixelDetection®, you will receive the right alarm at exactly the right moment and always be able to see an overview. Proven for many years and repeatedly awarded, PixelDetection® is also known as the “artificial eye of the operator”.

[More about PixelDetection®](#)



## **JST myLogin<sup>®</sup> – the operator's login**

JST myLogin<sup>®</sup> is a revolutionary solution for logging on and off centrally and quickly from all operator workstations with your company ID. The login/logout process only takes a few moments. If you want, you can also save your personal layout of the screen contents.

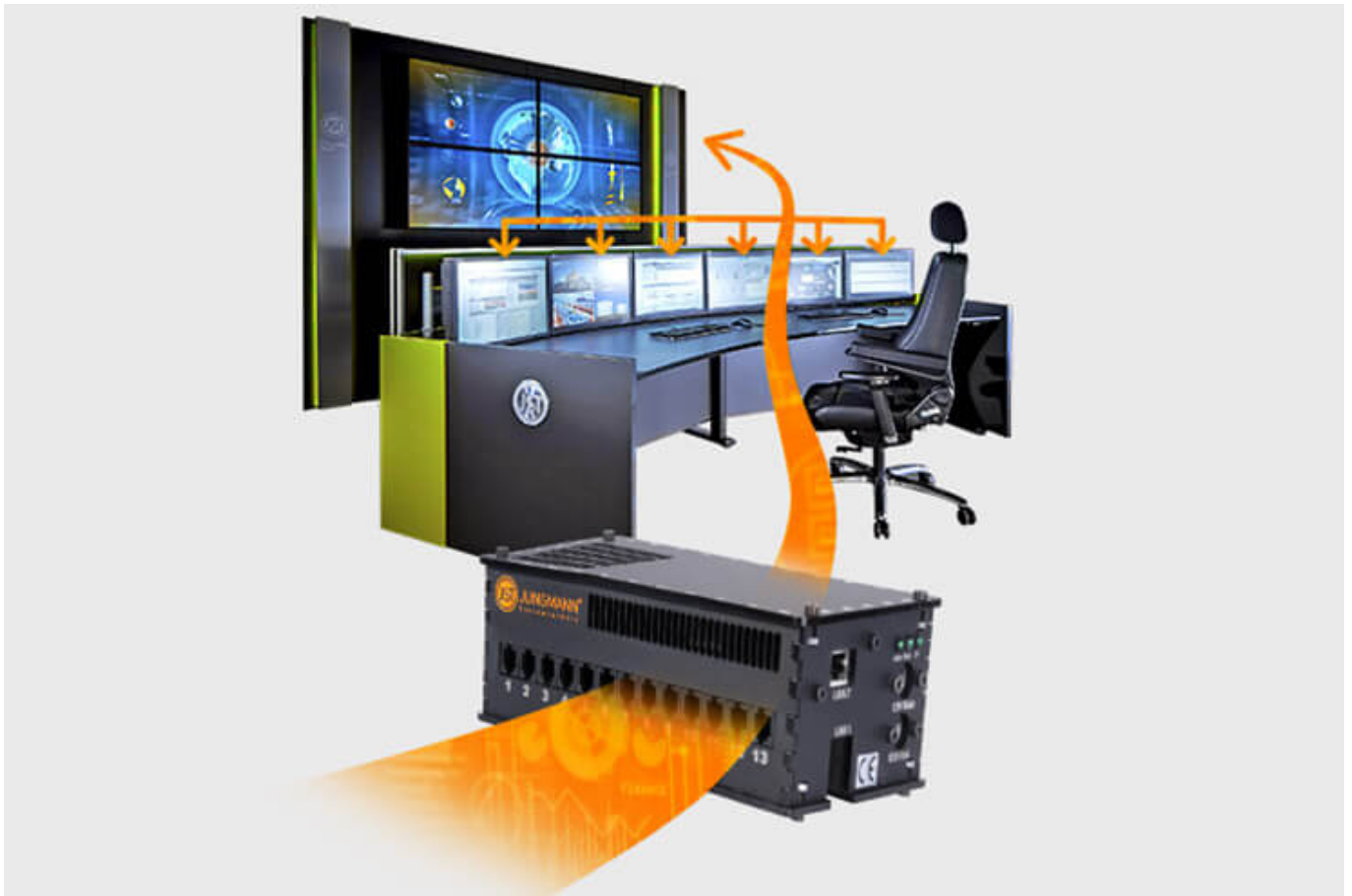
[More about myLogin<sup>®</sup>](#)



## CockpitView – the operator’s dashboard

Create dashboards with content from different computers on different networks! CockpitView offers you the perfect overview of your most important applications at a glance. With CockpitView you can stay in control and reduce monitors at the workplace or even the large-format system.

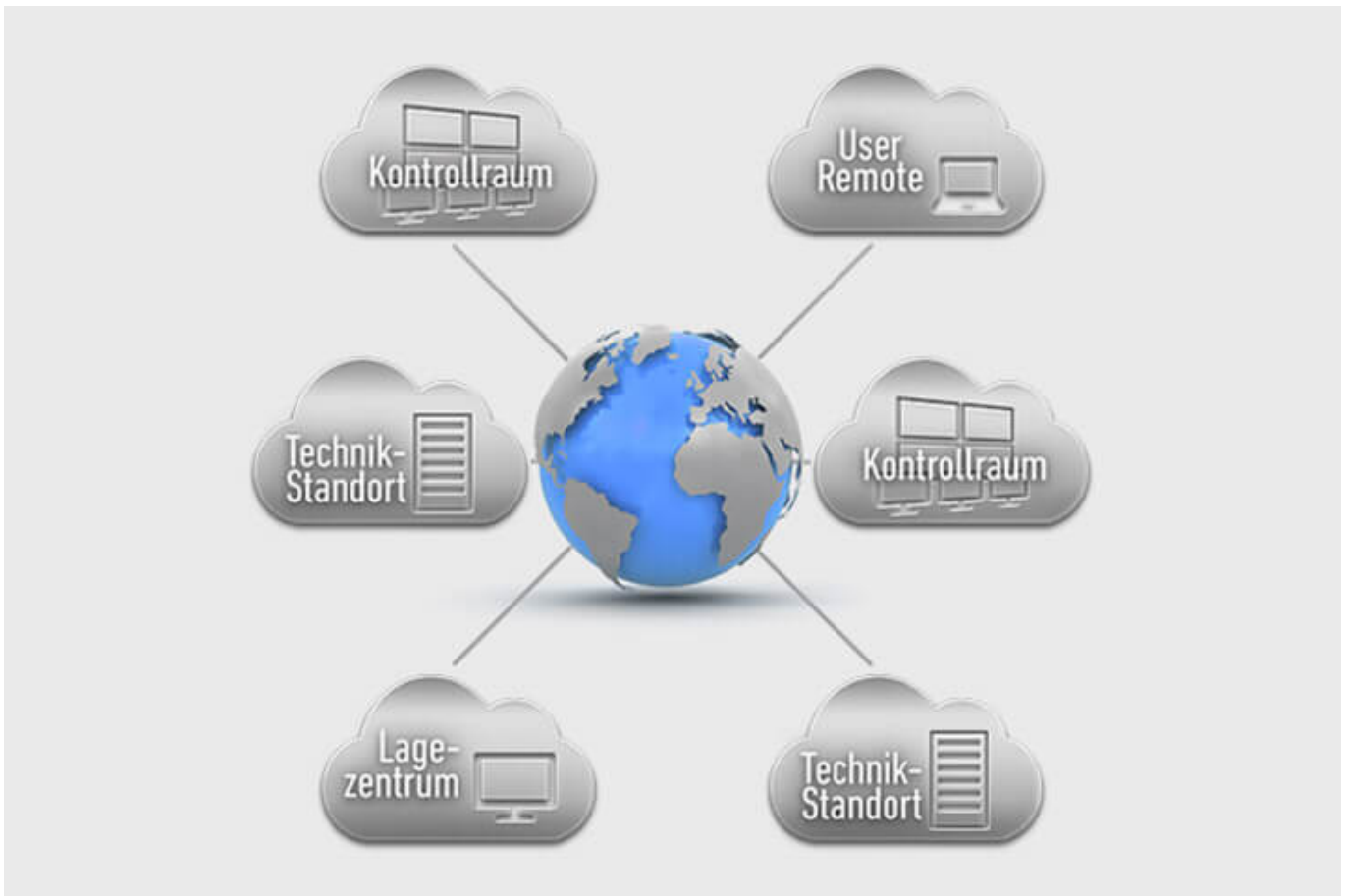
[More about CockpitView](#)



## Automation for Videowalls and operator workstations

With the JST CommandBox, you can monitor circuits, relays, audio signals, and much more, and have them automatically switched on at defined workstations or on the monitor wall when critical values are detected. The range of applications is almost unlimited!

[More about ControlRoom Automation](#)



## **ControlRoom Remote: Connection of distributed systems and locations**

The optional remote interface of JST Systems allows you to visualise and operate remote computers and entire control rooms. Even complex emergency scenarios for backup control rooms are feasible!

[More about ControlRoom Remote](#)





## **Computer relocation and PC remote control**

By relocating computers from the control room to the technical room, you can reduce the thermal load and create more legroom for your employees. Additional advantages are the central administration of the computers as well as the physical access protection in the secured technical room.

[More about computer relocation](#)



### Optional service and maintenance packages

To ensure that your control room stays as available as you need it to be, we offer preventative maintenance packages in various scopes and forms. You will receive customised solutions that will support your market and competitive success.

[More about service from JST](#)

### Was möchten Sie als Nächstes tun?

Ich möchte

- [das kostenfreie Praxisbuch der Kontrollräume anfordern](#)
- [einen Rückruf für eine unverbindliche Beratung](#)
- [den Kontrollraum-Simulator in Buxtehude besuchen](#)
- [eine digitale 360°-Tour in einem Kontrollraum erleben](#)

- [mehr über Kontrollräume auf dem ko:mon Kongress erfahren](#)

We are happy to answer your questions on the subject of traffic control centers

**+49 4161 54044-0**

---

You are currently viewing a placeholder content from **YouTube**. To access the actual content, click the button below. Please note that doing so will share data with third-party providers.

[More Information](#)

[Unblock content](#) [Accept required service and unblock content](#)