

## Warehouse control station and control room for logistics

In logistics, the **warehouse control center** is the central point of the entire warehouse management system. Industrial companies of all sizes have now recognized that a **focus on processes and logistics has become indispensable**.

JST Systemtechnik analyses the conditions on site and implements the new logistics control center according to your needs.

With the innovative ProfiTools such as CockpitView<sup>®</sup> and the large screen technology from JST the employees have all **processes in the warehouse control center perfectly in view 24/7**, detect faults and shut them down immediately.

Thanks to digitalization, the employees in the control center for logistics receive more and more information.

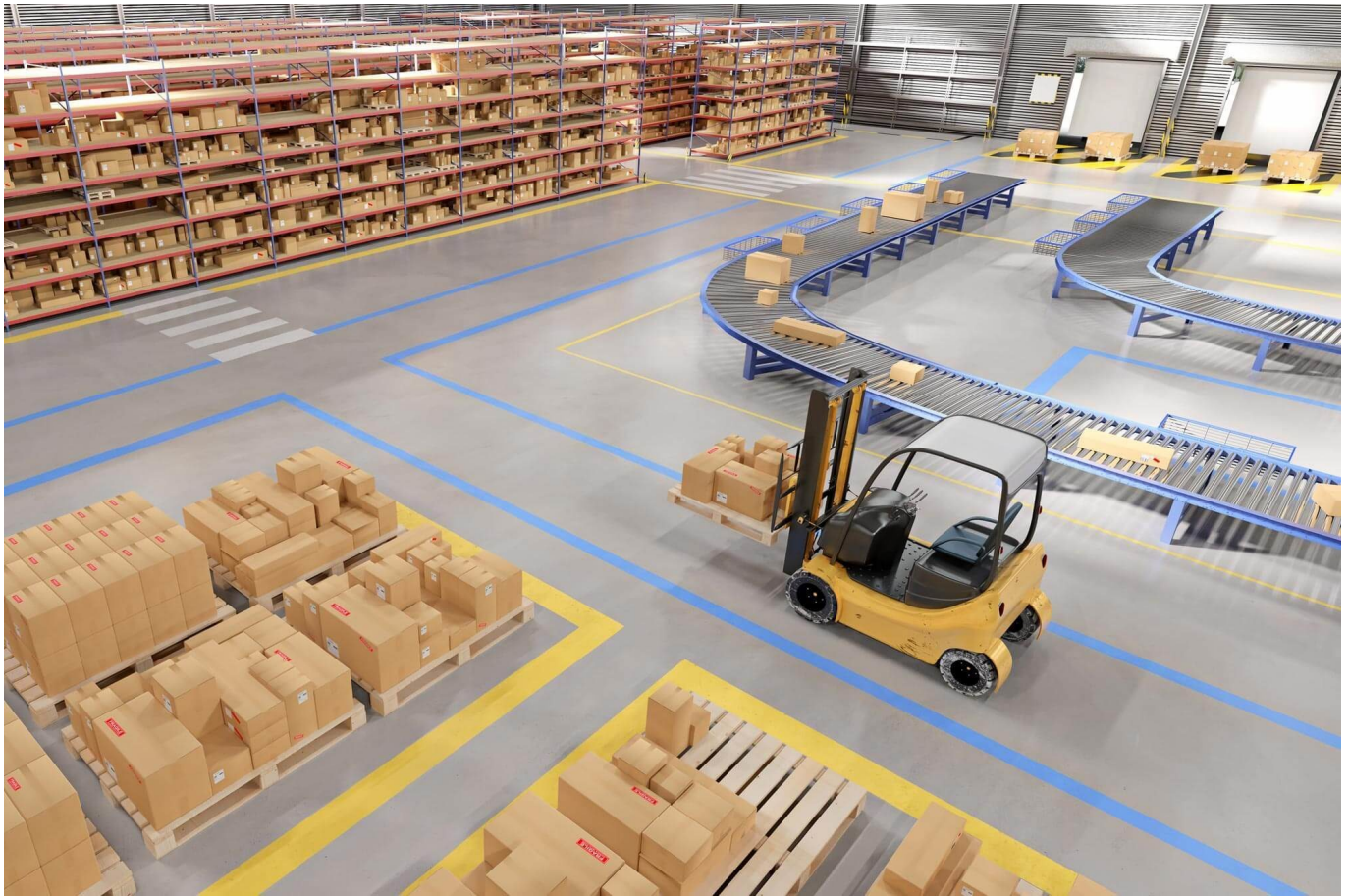
Those who use this information correctly can extend their **lead in the market**.

Procurement, production and delivery can thus be efficiently monitored with a MultiConsoling control system.

With our PixelDetection<sup>®</sup> you keep the overview and receive alarm signals immediately if necessary. JST brings your logistics safely on the way with the right control center!

**OFFER WAREHOUSE CONTROL CENTER AND CONTROL CENTER FOR LOGISTICS**





- Visualization of all processes
- Planning and release of all functions
- Event monitoring in the inventory control center
  
- All alarms immediately visible
- Fast fault clearance



## **Practical examples: Warehouse control center and control center for logistics**

Logistics companies rely on the know-how of JST Jungmann Systemtechnik for the **planning and implementation of their control center for logistics.**

A **modern control center for logistics** helps the employees to **control the warehouse.**

Material flow systems and operating

**states are clearly**

displayed on monitor walls.

If faults or downtimes occur, they are directly visible.

The employees are also more alert thanks to the ergonomic

control room furniture, they have everything perfectly under control and are able to introduce the required

measures for

**troubleshooting the problem.**

**JST knows the demands** and knows with which professional

**Hardware and Software solutions** your warehouse will run like clockwork.

**We will be happy to put you in touch with the respective contact person.**

### **Simply everything fits - control center logistics in the distribution center**

dm-drogerie markt operates 2,536 stores across Europe and employs more than 39,000 people. The 25,450 dm employees in Germany generated a turnover of 4.5 billion euros in the financial year 2010/2011.

Group-wide sales exceeded the 6 billion euro mark for the first time.

The current 1,300 dm stores in Germany are supplied with the drugstore range from two national distribution centers in Weilerswist near Cologne and Waghäusel in Baden.

Children's textiles are picked in the third dm distribution center in Karlsruhe.

**TO THE PROJECT**



*"Praises the work that Jungmann has done in the new control center: "Everything simply fits - the employees have really reacted individually to the conditions on site".*

-

Project manager





## **HARTING with innovative manufacturing cockpit**

The need for information in production and transport logistics is constantly increasing. The demand for data transparency of increasingly complex processes is becoming significantly higher.

The HARTING Technology Group develops, produces and integrates RFID technology. Hardware, software, system integration and consulting are combined under one roof.

**TO THE PROJECT**



*"JST has offered itself as a competent partner.  
The entire execution of the project (consulting, conceptual design, implementation) was carried  
out in an excellent manner, quickly and with high quality.  
The service offered by JST for ongoing operations also responds promptly and successfully.  
Working with JST has been very pleasant and professional at all times".*

**Detlev Kuhlmann**

Project lead



## ALL PROJECTS

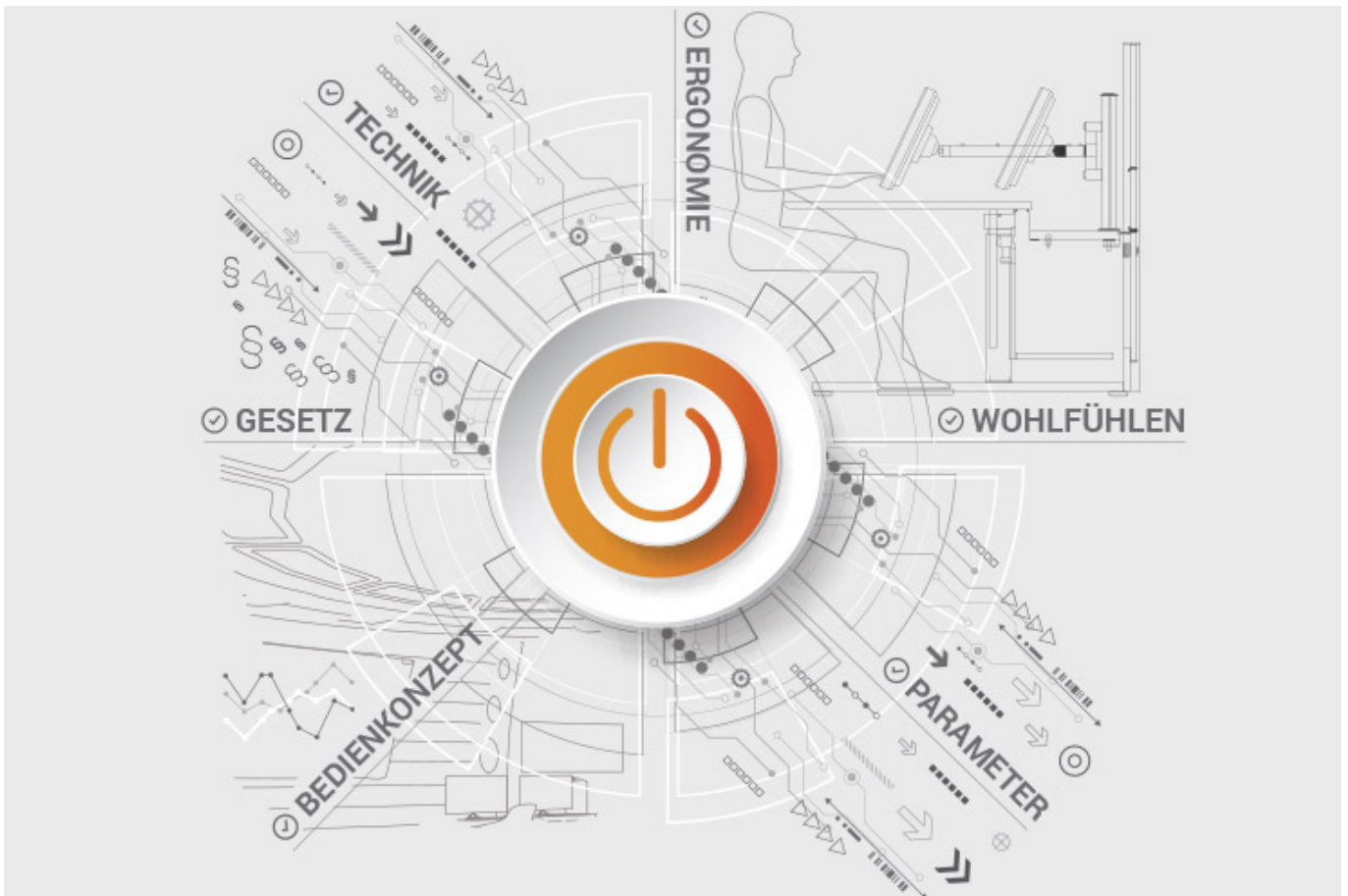
### Documents to download

- [Project report on the new central control room of Infraleuna \(PDF\)](#)

## JST product overview: Think of everything!

## Warehouse control center and control center for logistics with suitable components





## Analysis and planning of your control room

Are you planning changes in your control room?

Or would you like to bring a breath of fresh air into your control room?

Then use the proven planning packages or the free of charge online analysis from JST.

Our experts support you according to BAUA: Study and all important standards and guidelines.

More about free analysis





## **Large screen technology – react faster!**

Proactively present important information to the right people before an incident can have a major impact. With scalable large screen walls based on LC displays and cube technology, we will also find the right large screen system for 24/7 operation for you!

More about the JST large screen technology



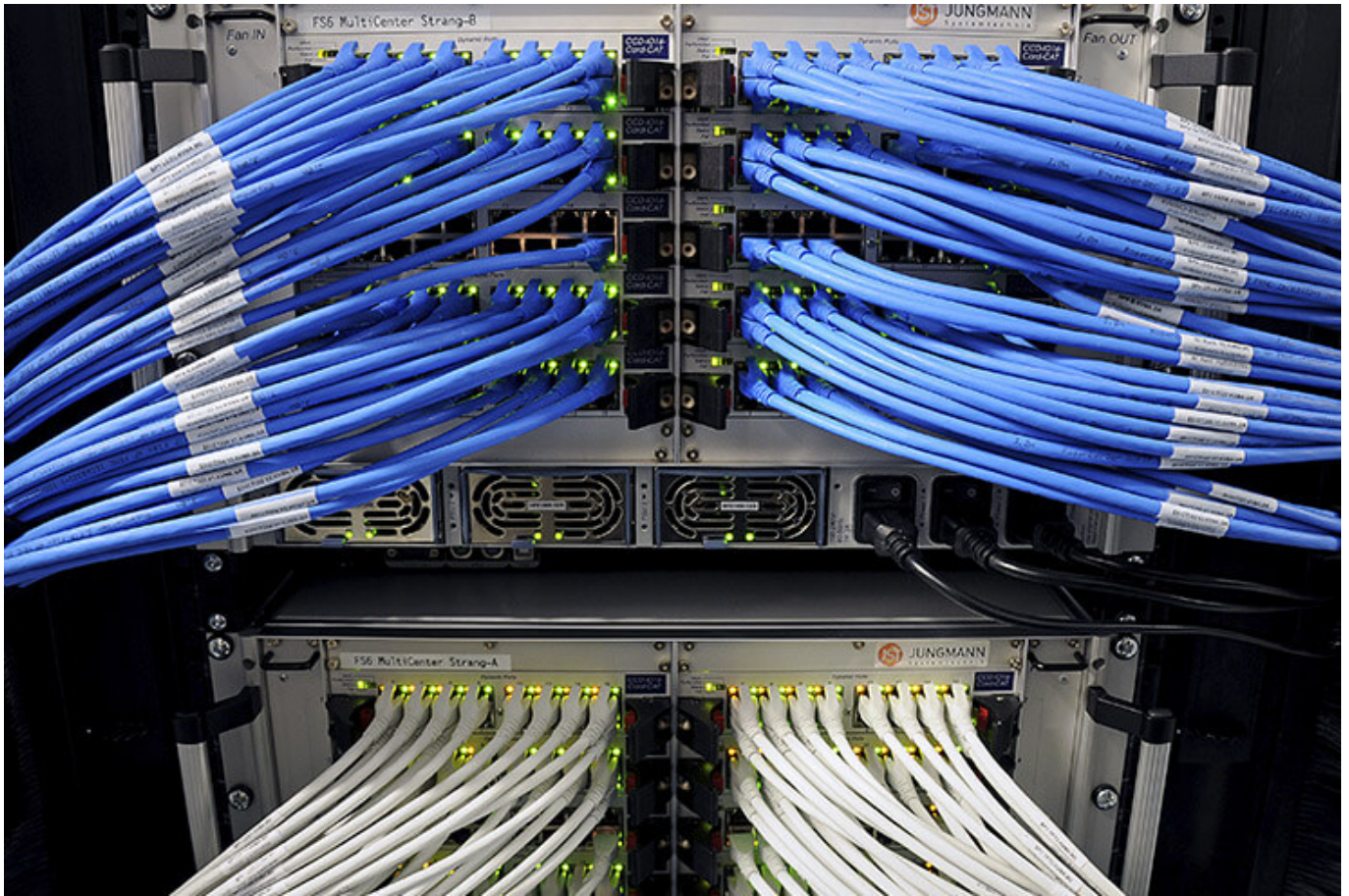
## myGUI® – User interface for

### Large screen system, workplace & infrastructure

The intuitive myGUI® user interface in the 3D layout of your control room offers highest ease of use of your MultiConsoling® system.

With one click you can operate workstations, monitor walls and infrastructure – always absolutely safe and outstanding in stressful situations.

More about the myGUI<sup>®</sup>



## MultiConsoling® – the

### Control room switchboard

MultiConsoling® is the highly available control center to connect all signals of your systems with the monitors at the operator station and on the monitor walls.

The transmission takes place in real time and no software is required on your computers.

[More about the MultiConsoling®](#)





**Control room furniture: ergonomic operator consoles, Recaro operator chair, AllMedia Conference System**

Furniture and technology are available from JST from one source.

The height-adjustable and highly stable Stratos operator consoles and matching surrounding furniture form the ergonomic basis for your control room.

[More about the control room furniture](#)





## Large screen control with graphic controller

With the IP-based graphics controller you can get your monitor wall going.

The graphics controller records all video signals via the IP network simultaneously and distributes them at any point and in any scale on the large screen wall.

[More about graphic controllers](#)



## PixelDetection® – the operator's eye

Shorten your reaction times!

With PixelDetection® you receive the right alarm at exactly the right moment and always keep an overview. Proven for many years and repeatedly awarded, PixelDetection® is also called the “artificial eye of the operator”.

[More about PixelDetection®](#)



## **JST myLogin<sup>®</sup> – the operator's login**

JST myLogin<sup>®</sup> is a revolutionary solution that allows you to log on and off centrally and quickly at all operator workstations with your company ID card.

The login/logout process only takes a few moments.

If desired, your personal arrangement of the screen contents can also be saved.

[More about myLogin<sup>®</sup>](#)



## CockpitView – the operator’s dashboard

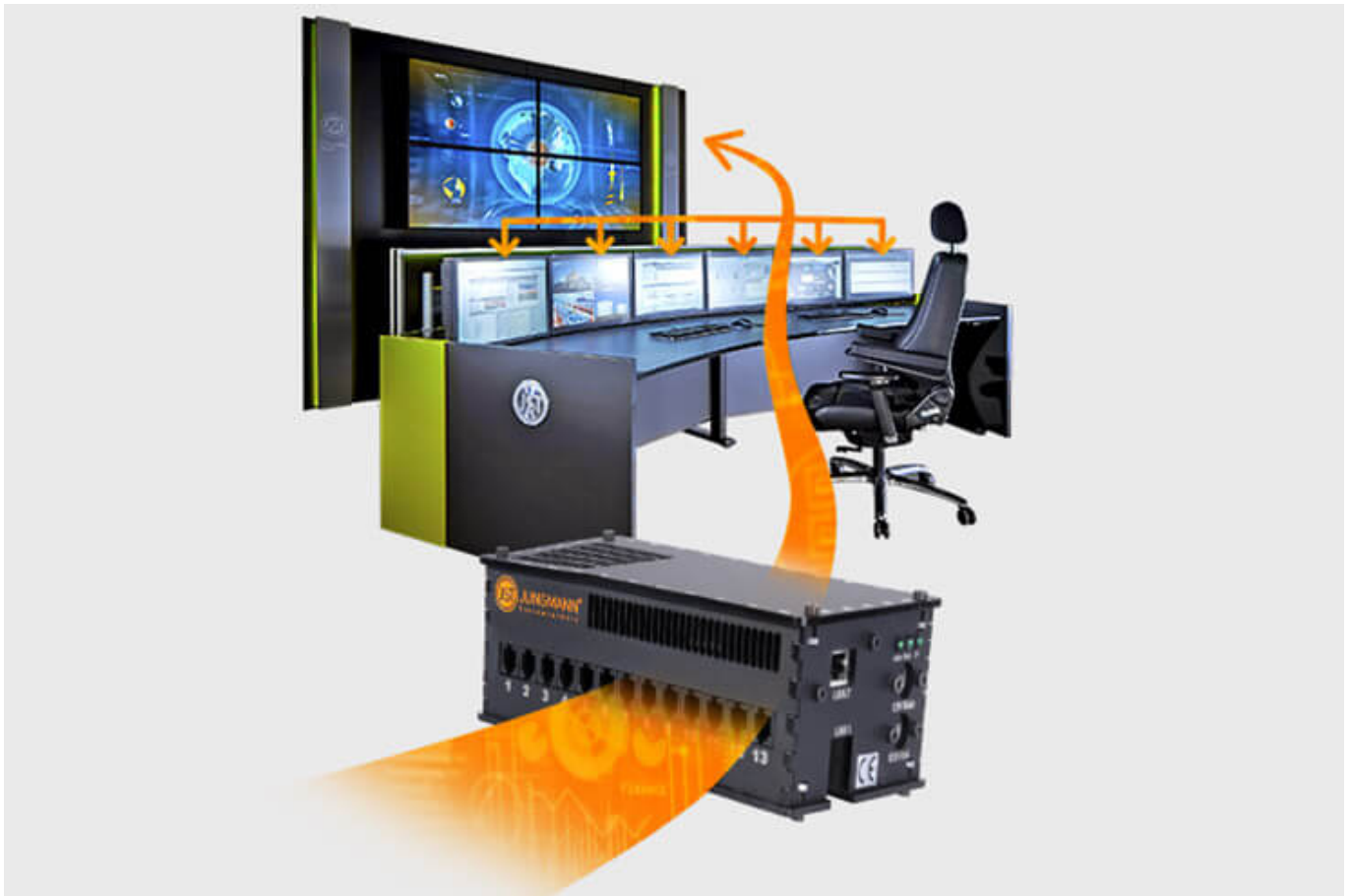
Create dashboards with content from different computers on different networks!

CockpitView offers you the perfect overview of your most important applications at a glance.

With CockpitView you stay in control and can reduce monitors at the workplace or even the large screen system.

[More about CockpitView](#)





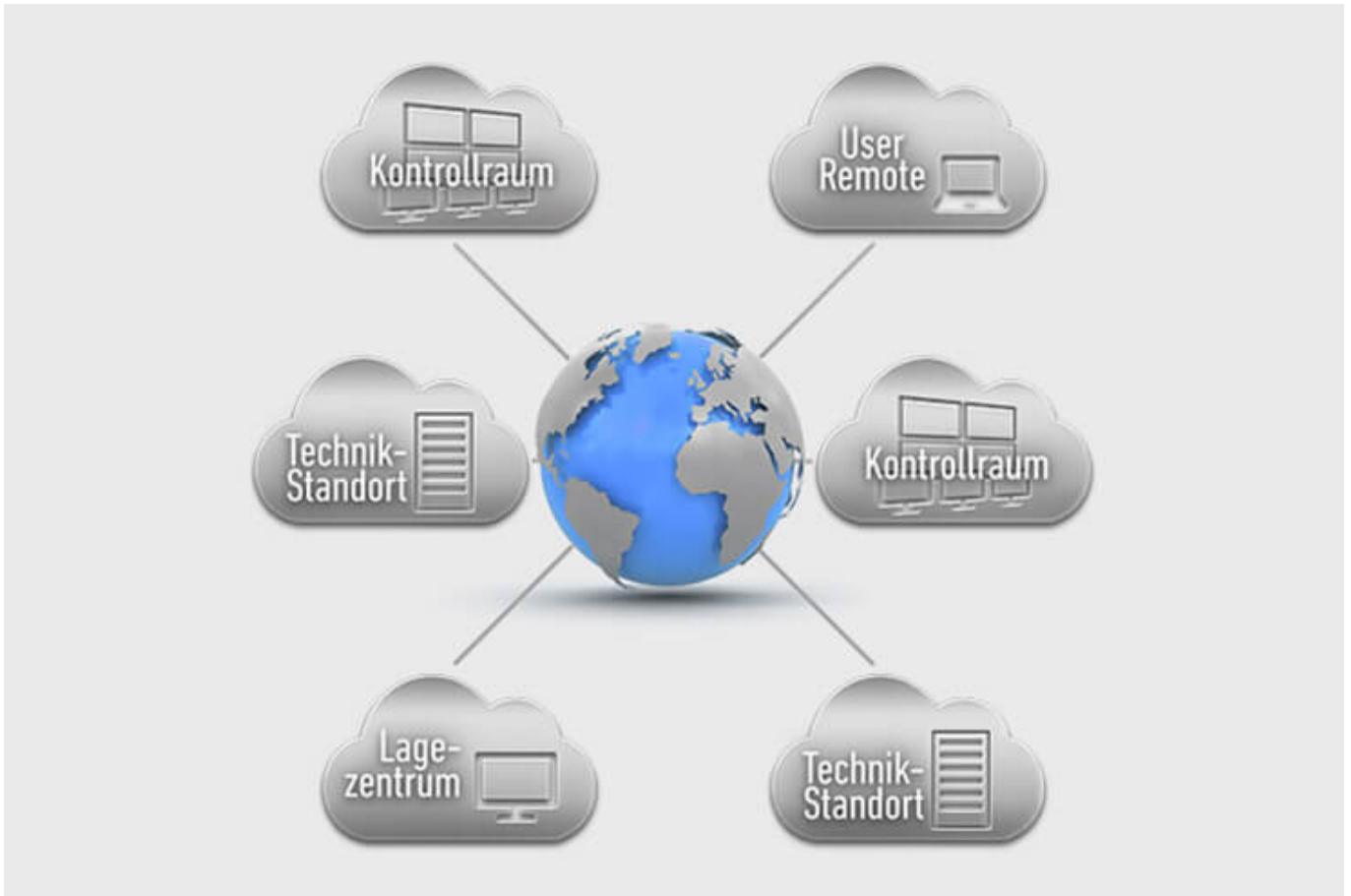
## Automation for video walls and

## Operator workstations

With the JST CommandBox you can monitor circuits, relays, audio signals, and much more. and have them automatically switched on at defined workstations or on the monitor wall in the case of critical values.

The application possibilities are almost limitless!

[More about ControlRoom-Automation](#)



## **Control room remote: connection of**

## **decentralized systems and locations**

The optional remote interface of the JST systems allows you to visualize and operate remote computers and entire control rooms.

Even complex emergency scenarios for backup control rooms can be realized!

[More about ControlRoom-Remote](#)



## **Computer outsourcing and**

### **PC remote control**

By outsourcing the computers from the control room to the technical room, you reduce the heat load and create more space in the employees' legroom.

Further advantages are the central administration of the computers and the physical access protection in the secured technical room.

[More about computer outsourcing](#)



### **Optional service and maintenance packages**

To ensure that your control room is as available as you need it to be, we offer availability assurance packages in various scopes and versions.

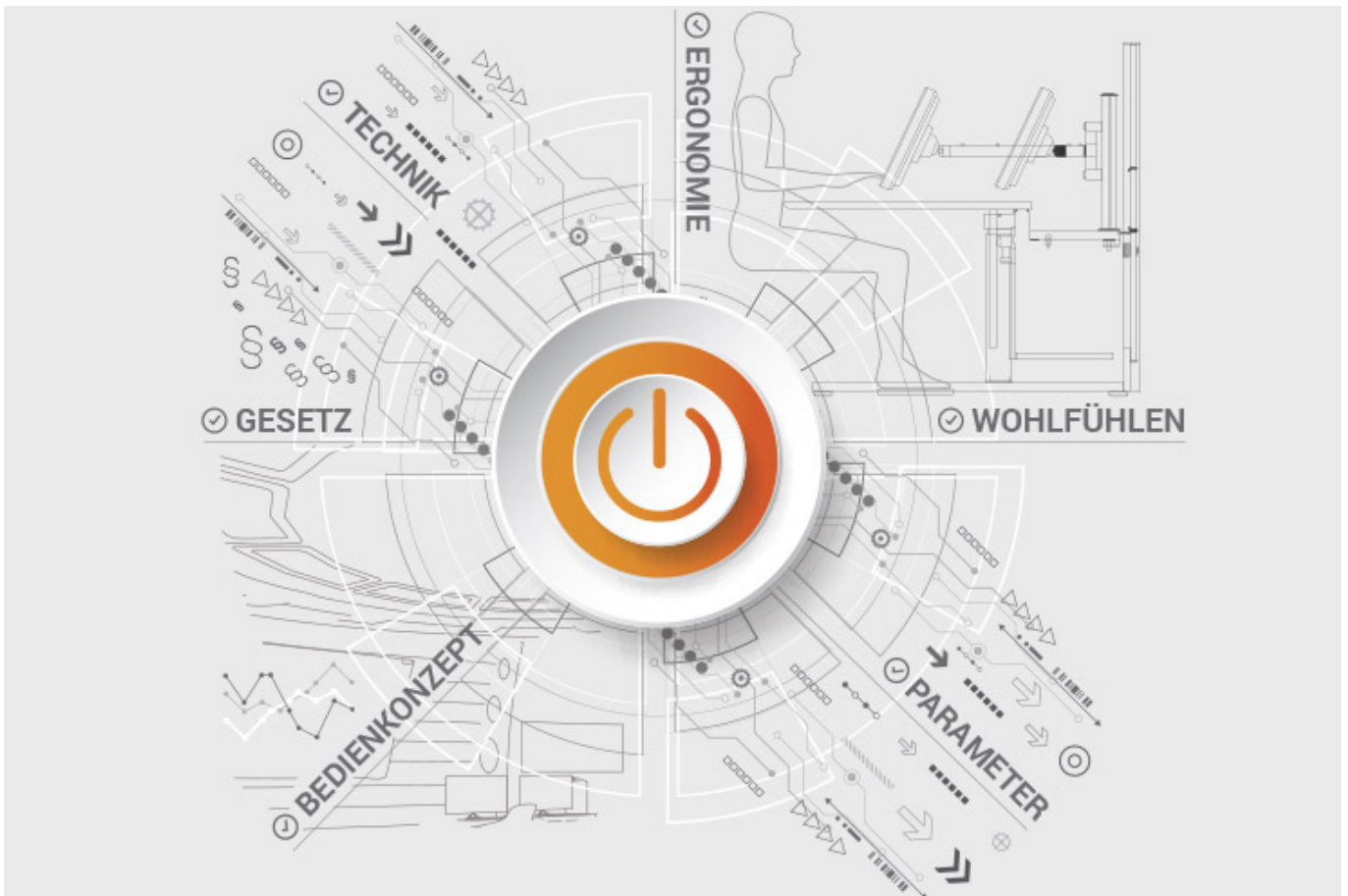
You will receive tailor-made solutions that support your market and competitive success.

[More about service from JST](#)

## **JST product overview: Think of everything!**

### **Warehouse control center and control center for logistics with suitable components**





## Analysis and planning of your control room

Are you planning changes in your control room?

Or would you like to bring a breath of fresh air into your control room?

Then use the proven planning packages or the free of charge online analysis from JST.

Our experts support you according to BAUA: Study and all important standards and guidelines.

More about free analysis



## **Large screen technology – react faster!**

Proactively present important information to the right people before an incident can have a major impact. With scalable large screen walls based on LC displays and cube technology, we will also find the right large screen system for 24/7 operation for you!

More about the JST large screen technology



## myGUI® – User interface for

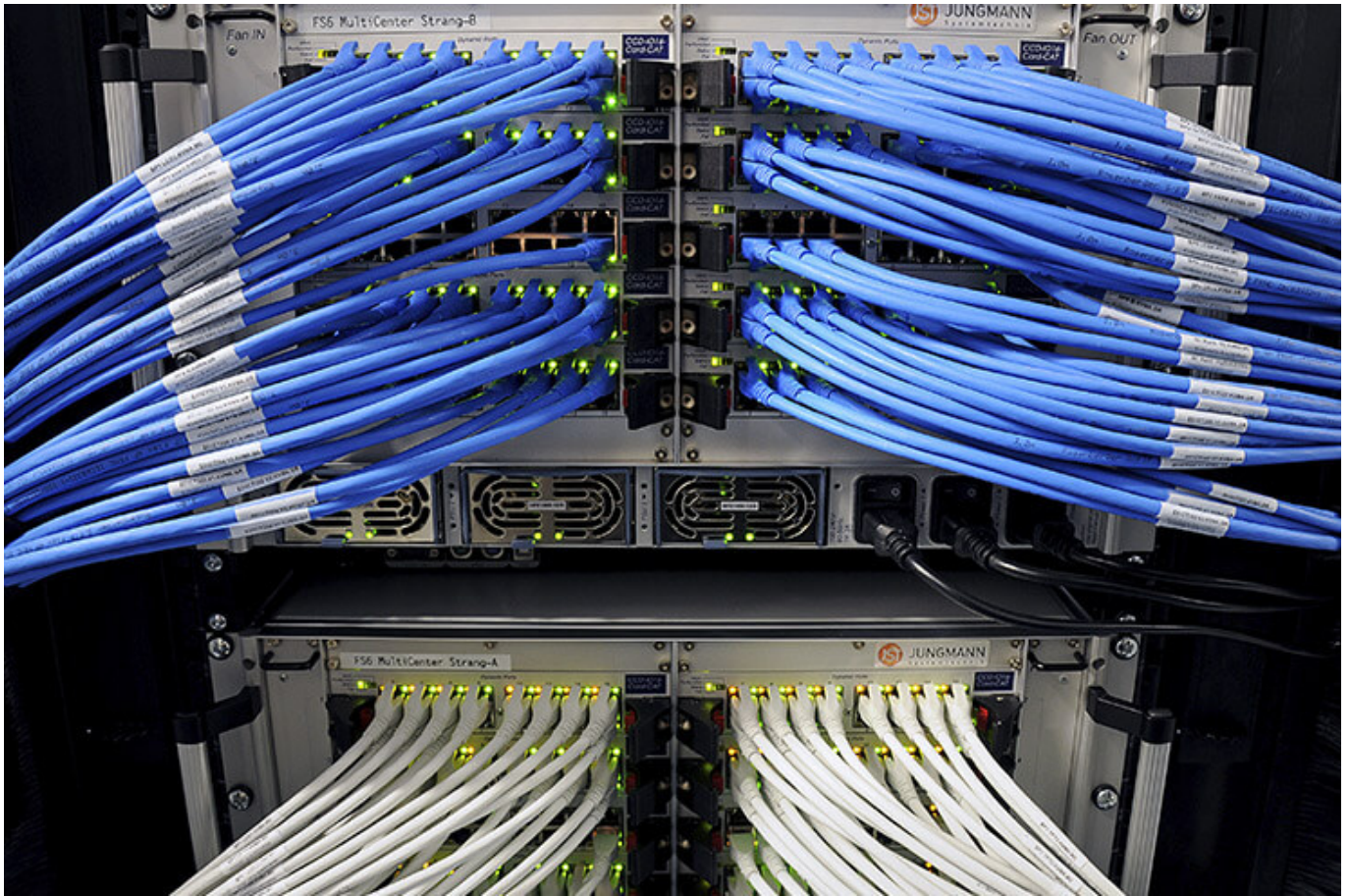
### Large screen system, workplace & infrastructure

The intuitive myGUI® user interface in the 3D layout of your control room offers highest ease of use of your MultiConsoling® system.

With one click you can operate workstations, monitor walls and infrastructure – always absolutely safe and outstanding in stressful situations.

More about the myGUI®





## **MultiConsoling® – the**

### **Control room switchboard**

MultiConsoling® is the highly available control center to connect all signals of your systems with the monitors at the operator station and on the monitor walls.

The transmission takes place in real time and no software is required on your computers.

[More about the MultiConsoling®](#)





**Control room furniture: ergonomic operator consoles, Recaro operator chair, AllMedia Conference System**

Furniture and technology are available from JST from one source.

The height-adjustable and highly stable Stratos operator consoles and matching surrounding furniture form the ergonomic basis for your control room.

[More about the control room furniture](#)



## Large screen control with graphic controller

With the IP-based graphics controller you can get your monitor wall going.

The graphics controller records all video signals via the IP network simultaneously and distributes them at any point and in any scale on the large screen wall.

[More about graphic controllers](#)



## PixelDetection® – the operator's eye

Shorten your reaction times!

With PixelDetection® you receive the right alarm at exactly the right moment and always keep an overview. Proven for many years and repeatedly awarded, PixelDetection® is also called the “artificial eye of the operator”.

[More about PixelDetection®](#)





## **JST myLogin<sup>®</sup> – the operator's login**

JST myLogin<sup>®</sup> is a revolutionary solution that allows you to log on and off centrally and quickly at all operator workstations with your company ID card.

The login/logout process only takes a few moments.

If desired, your personal arrangement of the screen contents can also be saved.

[More about myLogin<sup>®</sup>](#)





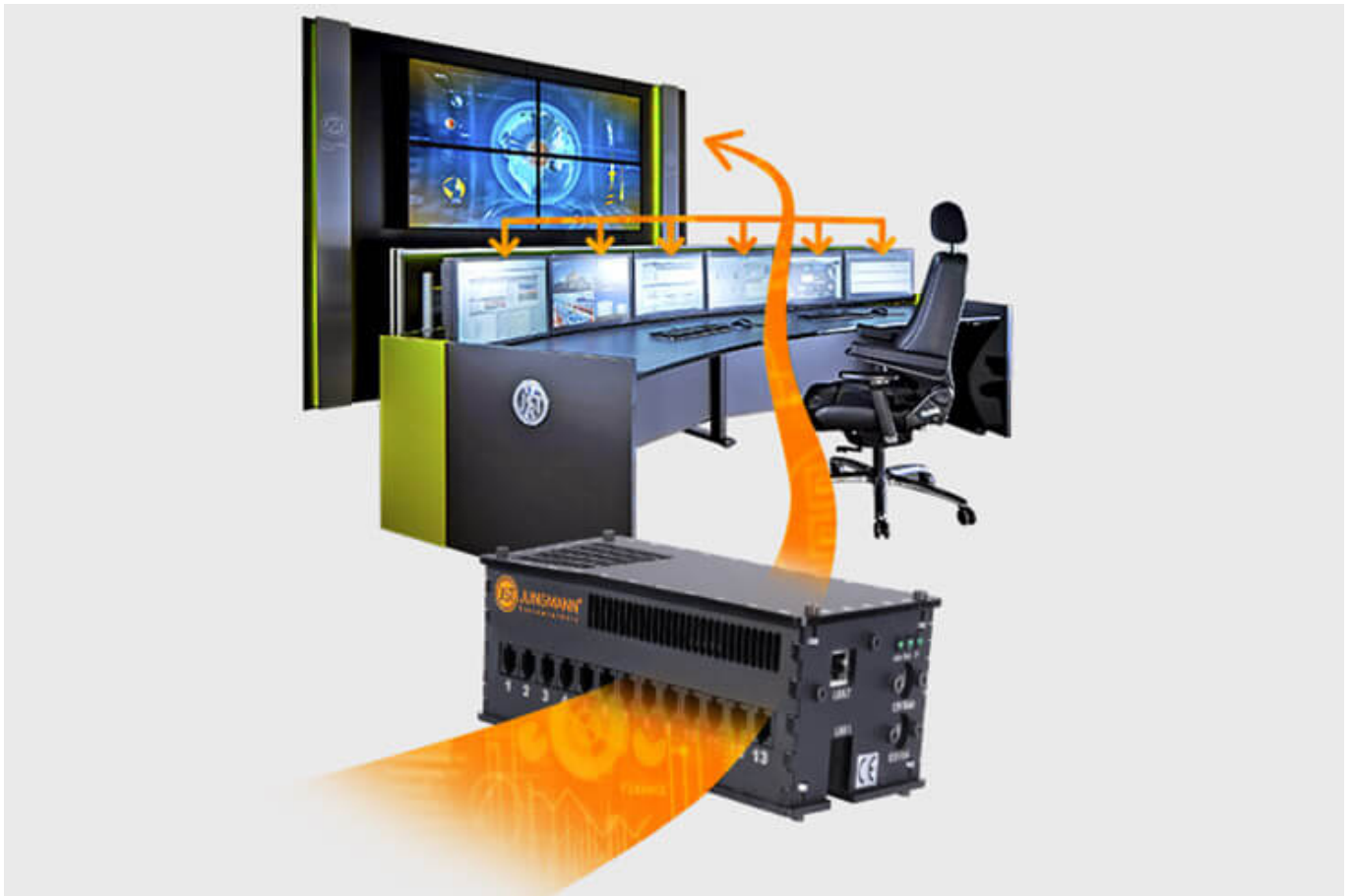
## CockpitView – the operator’s dashboard

Create dashboards with content from different computers on different networks!

CockpitView offers you the perfect overview of your most important applications at a glance.

With CockpitView you stay in control and can reduce monitors at the workplace or even the large screen system.

[More about CockpitView](#)



## Automation for video walls and

## Operator workstations

With the JST CommandBox you can monitor circuits, relays, audio signals, and much more. and have them automatically switched on at defined workstations or on the monitor wall in the case of critical values.

The application possibilities are almost limitless!

[More about ControlRoom-Automation](#)



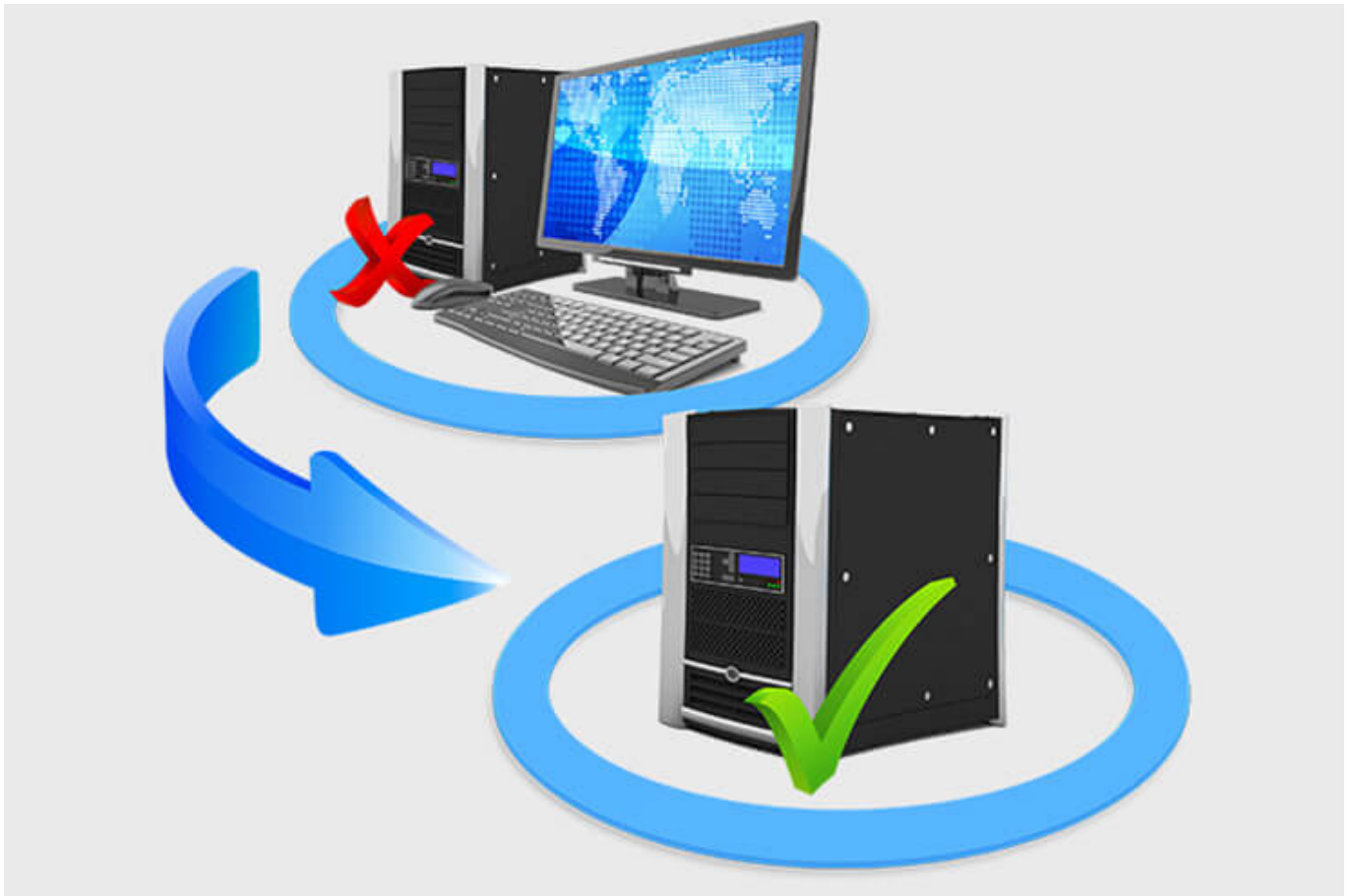
## **Control room remote: connection of**

## **decentralized systems and locations**

The optional remote interface of the JST systems allows you to visualize and operate remote computers and entire control rooms.

Even complex emergency scenarios for backup control rooms can be realized!

[More about ControlRoom-Remote](#)



## **Computer outsourcing and**

### **PC remote control**

By outsourcing the computers from the control room to the technical room, you reduce the heat load and create more space in the employees' legroom.

Further advantages are the central administration of the computers and the physical access protection in the secured technical room.

[More about computer outsourcing](#)





### Optional service and maintenance packages

To ensure that your control room is as available as you need it to be, we offer availability assurance packages in various scopes and versions.

You will receive tailor-made solutions that support your market and competitive success.

[More about service from JST](#)

### Was möchten Sie als Nächstes tun?

Ich möchte

- [das kostenfreie Praxisbuch der Kontrollräume anfordern](#)
- [einen Rückruf für eine unverbindliche Beratung](#)
- [den Kontrollraum-Simulator in Buxtehude besuchen](#)
- [eine digitale 360°-Tour in einem Kontrollraum erleben](#)

- [mehr über Kontrollräume auf dem ko:mon Kongress erfahren](#)

We will be happy to answer your questions on the subject of warehouse control center and control center for logistics

**0800-777 8 666**

---

You are currently viewing a placeholder content from **YouTube**. To access the actual content, click the button below. Please note that doing so will share data with third-party providers.

[More Information](#)

[Unblock content](#) [Accept required service and unblock content](#)